

Image may be representation.  
See specifications for product details.



## NCP81071BZR2G

Manufacturer Part Number	<b>NCP81071BZR2G</b>
Manufacturer	<b>onsemi</b>
Allelco Part Number	32D-NCP81071BZR2G
ECAD Model	PCB Symbol, Footprint & 3D Model
Parts Description	IC GATE DRVR LOW-SIDE 8MSOP
Package	8-TSSOP, 8-MSOP (0.118", 3.00mm Width) Exposed Pad
Data sheet	<b>NCP81071.pdf</b>
RoHs Status	<b>ROHS3 Compliant</b>

**Get a Quote**

NCP81071BZR2G - onsemi.New Original in Stock. Download Linear Technology NCP81071BZR2G datasheet/specifications on AllelcoElec.com.  
Request a quote for NCP81071BZR2G, please send us email: [info@allelco.com](mailto:info@allelco.com)

## Specifications

NCP81071BZR2G Tech Specifications

NCP81071BZR2G - onsemi technical specifications, attributes, parameters

Product Attribute	Attribute Value	Product Attribute	Attribute Value
Manufacturer	onsemi	Mounting Type	Surface Mount
Voltage - Supply	4.5V ~ 20V	Logic Voltage - VIL, VIH	1.2V, 1.8V
Supplier Device Package	8-MSOP-EP	Input Type	Non-Inverting
Series	-	Gate Type	N-Channel MOSFET
Rise / Fall Time (Typ)	8ns, 8ns	Driven Configuration	Low-Side
Package / Case	8-TSSOP, 8-MSOP (0.118", 3.00mm Width) Exposed Pad	Current - Peak Output (Source, Sink)	5A, 5A
Package	Tape & Reel (TR)	Channel Type	Independent
Operating Temperature	-40°C ~ 140°C (TJ)	Base Product Number	NCP81071
Number of Drivers	2		

## Parts with Similar Specifications

The three parts on the right have similar specifications to onsemi NCP81071BZR2G

Product Attribute				
Part Number	NCP81071BZR2G	NCP81080DR2G	NCP81051MNTBG	NCP81071AMNTXG
Manufacturer	onsemi	onsemi	onsemi	onsemi
Number of Drivers	2	2	2	2
Package / Case	8-TSSOP, 8-MSOP (0.118", 3.00mm Width) Exposed Pad	8-SOIC (0.154", 3.90mm Width)	8-VDFN Exposed Pad	8-WDFN Exposed Pad
Package	Tape & Reel (TR)	Tape & Reel (TR)	Tape & Reel (TR)	Tape & Reel (TR)
Operating Temperature	-40°C ~ 140°C (TJ)	-40°C ~ 140°C (TJ)	0°C ~ 150°C (TJ)	-40°C ~ 140°C (TJ)
Input Type	Non-Inverting	TTL	Non-Inverting	Inverting
Gate Type	N-Channel MOSFET	N-Channel MOSFET	N-Channel MOSFET	N-Channel MOSFET
Current - Peak Output (Source, Sink)	5A, 5A	500mA, 800mA	-	5A, 5A
Channel Type	Independent	Synchronous	Synchronous	Independent
Rise / Fall Time (Typ)	8ns, 8ns	19ns, 17ns	16ns, 11ns	8ns, 8ns
Driven Configuration	Low-Side	Half-Bridge	Half-Bridge	Low-Side
Base Product Number	NCP81071	NCP81080	NCP81051	NCP81071
Supplier Device Package	8-MSOP-EP	8-SOIC	8-DFN (2x2)	8-WDFN (3x3)
Voltage - Supply	4.5V ~ 20V	5.5V ~ 20V	4.5V ~ 5.5V	4.5V ~ 20V
Series	-	-	-	-
Mounting Type	Surface Mount	Surface Mount	Surface Mount	Surface Mount
Logic Voltage - VIL, VIH	1.2V, 1.8V	1.2V, 1.8V	0.6V, 3.3V	1.2V, 1.8V

## NCP81071BZR2G Datasheet PDF

Download NCP81071BZR2G pdf datasheets and onsemi documentation for NCP81071BZR2G - onsemi.

### Datasheets

NCP81071.pdf

### Environmental Information

onsemi REACH.pdf

onsemi RoHS.pdf

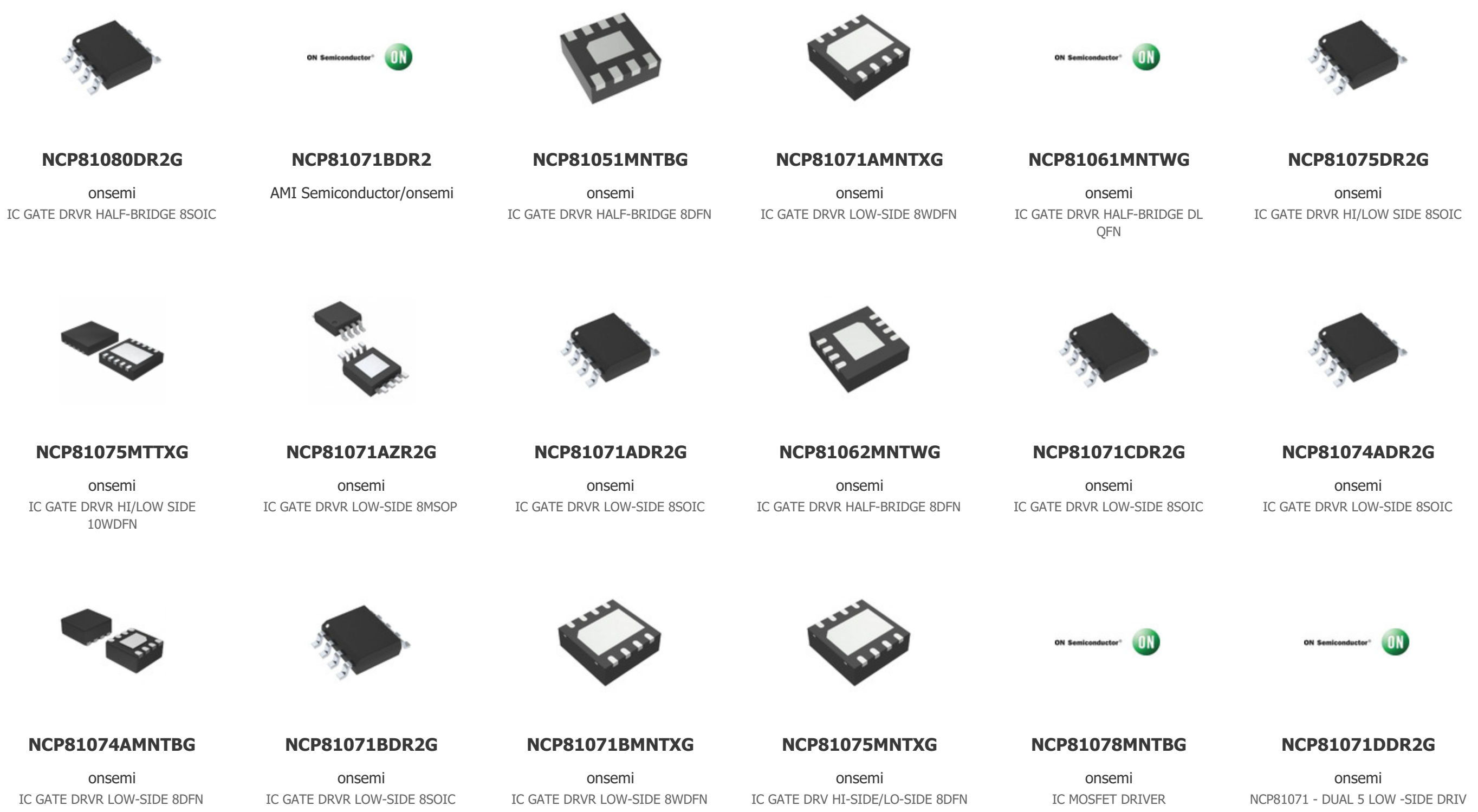
Material Declaration NCP81071BZR2G.pdf

### PCN Assembly/Origin

Wafer Fab Change 15/Feb/2023.pdf

## Customers Also Interested in

### Recommended Products



## Shipment

### Delivery Time

In-stock items can be shipped within 24 hours. Some parts will be arranged for delivery within 1-2 days from the date all items arrive at our warehouse. And Allelco ships order once a day at about 17:00, except Sunday. Once the goods are shipped, the estimated delivery time depends on the shipping methods and Delivery destination. The table below shows are the logistic time for some common countries.

### Delivery Cost

- > Use your express account for shipment if you have one.
  - > Use our account for the shipment. Refer to the table below for the approximate charges.
- (Different time frame / countries / package size has different price.)

### Delivery Method

- > Global Common Shipment by DHL / UPS / FedEx / TNT / EMS / SF we support.
- > Others more shipping ways, please get in touch with your customer manager.

Common Countries Logistic Time Reference		
Region	Country	Logistic Time(Day)
America	United States	5
	Brazil	7
Europe	Germany	5
	United Kingdom	4
	Italy	5
Oceania	Australia	6
	New Zealand	7
Asia	India	6
	Japan	7
Middle East	Israel	6

DHL & FedEx Shipment Charges Reference	
Shipment charges(KG)	Reference DHL(USD\$)
0.00kg-1.00kg	USD\$60.00
1.00kg-2.00kg	USD\$70.00
2.00kg-3.00kg	USD\$80.00

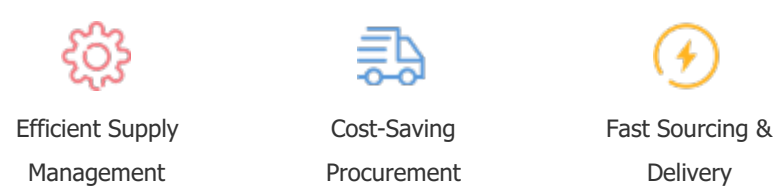
Note: The above table is for reference only. There may have some data bias for the uncontrollable factors.  
Contact us if you have any questions.

### Payment Support

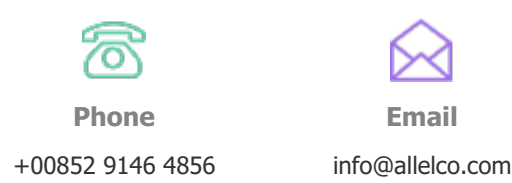
The payment method can be chosen from the methods shown below:  
Wire Transfer (T/T, Bank Transfer), Western Union, Credit card, PayPal.



### Your Faithful Supply Chain Partner -



Contact us if you have any questions.



### Certifications & Memberships



[View More](#)