

Image may be representation.
See specifications for product details.



ADG787BRMZ-500RL7

Manufacturer Part Number	ADG787BRMZ-500RL7
Manufacturer	Analog Devices, Inc.
Allelco Part Number	32D-ADG787BRMZ-500RL7
ECAD Model	PCB Symbol, Footprint & 3D Model
Parts Description	IC SWITCH SPDT X 2 3OHM 10MSOP
Package	10-TFSOP, 10-MSOP (0.118", 3.00mm Width)
Data sheet	ADG787.pdf
RoHs Status	ROHS3 Compliant

Get a Quote

ADG787BRMZ-500RL7 - Analog Devices Inc..New Original in Stock. Download Linear Technology ADG787BRMZ-500RL7 datasheet/specifications on AllelcoElec.com. Request a quote for ADG787BRMZ-500RL7, please send us email: info@allelco.com

Specifications

ADG787BRMZ-500RL7 Tech Specifications
ADG787BRMZ-500RL7 - Analog Devices Inc. technical specifications, attributes, parameters

Product Attribute	Attribute Value	Product Attribute	Attribute Value
Manufacturer	Analog Devices, Inc.	Number of Circuits	2
Voltage - Supply, Single (V+)	1.8V ~ 5.5V	Multiplexer/Demultiplexer Circuit	2:1
Voltage - Supply, Dual (V±)	-	Mounting Type	Surface Mount
Switch Time (Ton, Toff) (Max)	19ns, 5ns	Current - Leakage (IS(off)) (Max)	50pA (Typ)
Switch Circuit	SPDT	Crosstalk	-110dB @ 1MHz
Supplier Device Package	10-MSOP	Charge Injection	14pC
Series	-	Channel-to-Channel Matching (ΔRon)	20mOhm
Package / Case	10-TFSOP, 10-MSOP (0.118", 3.00mm Width)	Channel Capacitance (CS(off), CD(off))	16pF
Package	Tape & Reel (TR)	Base Product Number	ADG787
Operating Temperature	-40°C ~ 85°C (TA)	-3db Bandwidth	145MHz
On-State Resistance (Max)	30hm		

Parts with Similar Specifications

The three parts on the right have similar specifications to Analog Devices Inc. ADG787BRMZ-500RL7

Product Attribute				
Part Number	ADG787BRMZ-500RL7	ADG787BCPZ-500RL7	ADG788BCPZ-REEL7	ADG788BCP
Manufacturer	Analog Devices Inc.	Analog Devices Inc.	Analog Devices Inc.	Analog Devices Inc.
Voltage - Supply, Dual (V±)	-	-	±2.5V	-
Charge Injection	14pC	14pC	5pC	-
On-State Resistance (Max)	30hm	30hm	4.50hm	-
Voltage - Supply, Single (V+)	1.8V ~ 5.5V	1.8V ~ 5.5V	1.8V ~ 5.5V	-
Package / Case	10-TFSOP, 10-MSOP (0.118", 3.00mm Width)	10-VFDFN Exposed Pad, CSP	20-WFQFN Exposed Pad, CSP	20-WFQFN Exposed Pad, CSP
Mounting Type	Surface Mount	Surface Mount	Surface Mount	Surface Mount
Multiplexer/Demultiplexer Circuit	2:1	2:1	2:1	-
Switch Circuit	SPDT	SPDT	SPDT	-
Channel-to-Channel Matching (ΔRon)	20mOhm	20mOhm	-	-
Operating Temperature	-40°C ~ 85°C (TA)	-40°C ~ 85°C (TA)	-40°C ~ 85°C (TA)	-
Base Product Number	ADG787	ADG787	ADG788	ADG788
Current - Leakage (IS(off)) (Max)	50pA (Typ)	50pA (Typ)	100pA	-
Number of Circuits	2	2	4	-
Crosstalk	-110dB @ 1MHz	-110dB @ 1MHz	-80dB @ 1MHz	-
Package	Tape & Reel (TR)	Tape & Reel (TR)	Tape & Reel (TR)	Bag
Channel Capacitance (CS(off), CD(off))	16pF	16pF	11pF	-
Series	-	-	-	-
Supplier Device Package	10-MSOP	10-LFCSP-WD (3x3)	20-LFCSP (4x4)	20-LFCSP (4x4)
Switch Time (Ton, Toff) (Max)	19ns, 5ns	19ns, 5ns	21ns, 10ns (Typ)	-
-3db Bandwidth	145MHz	145MHz	160MHz	-

ADG787BRMZ-500RL7 Datasheet PDF

Download ADG787BRMZ-500RL7 pdf datasheets and Analog Devices Inc. documentation for ADG787BRMZ-500RL7 - Analog Devices Inc..

Datasheets

[ADG787.pdf](#)

Other Related Documents

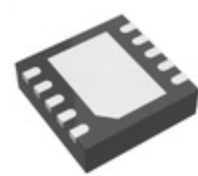
[Tape and Reel Packaging.pdf](#)



8/10L MSOP Products Assembly Transf
26/Oct/2015.pdf

Customers Also Interested in

Recommended Products



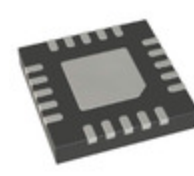
ADG787BCPZ-500RL7
Analog Devices Inc.
IC SWITCH SPDT X 2 30HM 10LFCSP



ADG788
ANALOGDEVICES



ADG788BCPZ-REEL7
Analog Devices Inc.
IC SWITCH SPDTX4 4.5OHM 20LFCSP



ADG788BCP
Analog Devices Inc.
IC SWITCH QUAD SPDT 20LFCSP



ADG794BRQZ-REEL7
Analog Devices Inc.
IC SWITCH SPDT X 4 7OHM 16QSOP



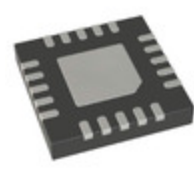
ADG787BRMZ
Analog Devices Inc.
IC SWITCH SPDT X 2 30HM 10MSOP



ADG787BRMZ-REEL
Analog Devices Inc.
IC SWITCH SPDT X 2 30HM 10MSOP



ADG794BRQZ-REEL
Analog Devices Inc.
IC SWITCH SPDT X 4 7OHM 16QSOP



ADG788BCPZ
Analog Devices Inc.
IC SWITCH SPDTX4 4.5OHM 20LFCSP



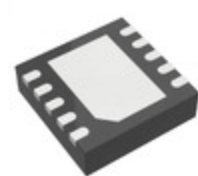
ADG787BCPZ
ADI (Analog Devices, Inc.)



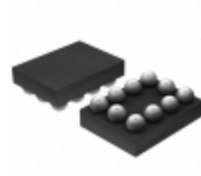
ADG787BCPZ-REEL7
Analog Devices Inc.
IC SWITCH SPDT X 2 30HM 10LFCSP



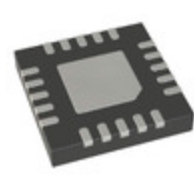
ADG786ACP
ADI (Analog Devices, Inc.)



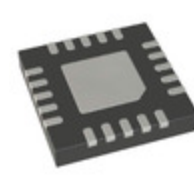
ADG787BCPZ-REEL
Analog Devices Inc.
IC SWITCH SPDT X 2 30HM 10LFCSP



ADG787BCBZ-500RL7
Analog Devices Inc.
IC SWITCH SPDT X 2 30HM 10WLCSOP



ADG783BCPZ
Analog Devices Inc.
IC SW SPST-NO/NCX4 40HM 20LFCSP



ADG784BCPZ
Analog Devices Inc.
IC SWITCH SPDTX4 2.2OHM 20LFCSP



ADG794BRQZ
Analog Devices Inc.
IC SWITCH SPDT X 4 7OHM 16QSOP



ADG790BCBZ-REEL
Analog Devices Inc.
IC MULTIPLEXER QUAD 30WLCSOP

Shipment

Delivery Time

In-stock items can be shipped within 24 hours. Some parts will be arranged for delivery within 1-2 days from the date all items arrive at our warehouse. And Allelco ships order once a day at about 17:00, except Sunday. Once the goods are shipped, the estimated delivery time depends on the shipping methods and Delivery destination. The table below shows are the logistic time for some common countries.

Delivery Cost

- > Use your express account for shipment if you have one.
 - > Use our account for the shipment. Refer to the table below for the approximate charges.
- (Different time frame / countries / package size has different price.)

Delivery Method

- > Global Common Shipment by DHL / UPS / FedEx / TNT / EMS / SF we support.
- > Others more shipping ways, please get in touch with your customer manager.

Common Countries Logistic Time Reference

Region	Country	Logistic Time(Day)
America	United States	5
	Brazil	7
Europe	Germany	5
	United Kingdom	4
	Italy	5
Oceania	Australia	6
	New Zealand	7
Asia	India	6
	Japan	7
Middle East	Israel	6

DHL & FedEx Shipment Charges Reference

Shipment charges(KG)	Reference DHL(USD\$)
0.00kg-1.00kg	USD\$60.00
1.00kg-2.00kg	USD\$70.00
2.00kg-3.00kg	USD\$80.00

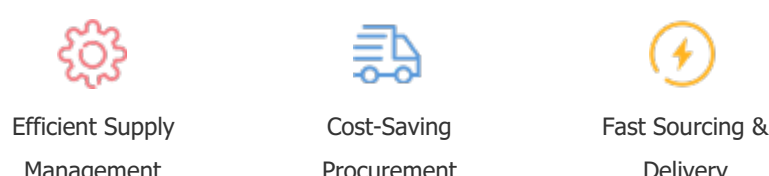
Note: The above table is for reference only. There may have some data bias for the uncontrollable factors.
Contact us if you have any questions.

Payment Support

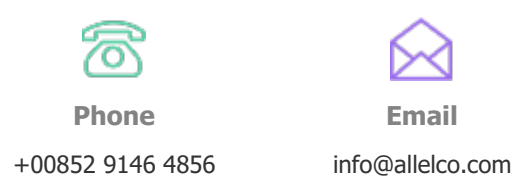
The payment method can be chosen from the methods shown below:
Wire Transfer (T/T, Bank Transfer), Western Union, Credit card,
PayPal.



Your Faithful Supply Chain Partner -



Contact us if you have any questions.



Certifications & Memberships



View More

Contact us

Address: Flat/Rm C 13/F Harvard Commercial Building 105-111 Thomson Road, Wan Chai, Hong Kong
Phone: +00852 9146 4856
Fax: +00852 3010 8510
Email: info@Allelco.com