



Image may be representation.
See specifications for product details.



AD9225ARS

| | |
|--------------------------|--|
| Manufacturer Part Number | AD9225ARS |
| Manufacturer | Analog Devices, Inc. |
| Allelco Part Number | 32D-AD9225ARS |
| ECAD Model | Request Free CAD Models |
| Parts Description | IC ADC 12BIT PIPELINED 28SSOP |
| Package | 28-SSOP (0.209", 5.30mm Width) |
| Data sheet | Cylindrical Battery Holders.pdf |
| RoHs Status | ROHS3 Compliant |

Get a Quote

AD9225ARS - Analog Devices Inc..New Original in Stock. Download Linear Technology AD9225ARS datasheet/specifications on AllelcoElec.com.
Request a quote for AD9225ARS, please send us email: info@allelco.com

Specifications

AD9225ARS Tech Specifications

AD9225ARS - Analog Devices Inc. technical specifications, attributes, parameters

| Product Attribute | Attribute Value | Product Attribute | Attribute Value |
|----------------------------|--------------------------------|--------------------------|----------------------------|
| Manufacturer | Analog Devices, Inc. | Number of Inputs | 1 |
| Voltage - Supply, Digital | 2.85V ~ 5.25V | Number of Bits | 12 |
| Voltage - Supply, Analog | 5V | Number of A/D Converters | 1 |
| Supplier Device Package | 28-SSOP | Mounting Type | Surface Mount |
| Series | - | Input Type | Differential, Single Ended |
| Sampling Rate (Per Second) | 25M | Features | - |
| Reference Type | External, Internal | Data Interface | Parallel |
| Ratio - S/H:ADC | 1:1 | Configuration | S/H-ADC |
| Package / Case | 28-SSOP (0.209", 5.30mm Width) | Base Product Number | AD9225 |
| Package | Tube | Architecture | Pipelined |
| Operating Temperature | -40°C ~ 85°C | | |

Parts with Similar Specifications

The three parts on the right have similar specifications to Analog Devices Inc. AD9225ARS

| Product Attribute | | | | |
|----------------------------|--------------------------------|--------------------------------|--------------------------------|--------------------------------|
| Part Number | AD9225ARS | AD9223ARSZ | AD9225AR | AD9225ARSZRL |
| Manufacturer | Analog Devices Inc. | Analog Devices Inc. | Analog Devices Inc. | Analog Devices Inc. |
| Voltage - Supply, Analog | 5V | 5V | 5V | 5V |
| Features | - | - | - | - |
| Operating Temperature | -40°C ~ 85°C | -40°C ~ 85°C | -40°C ~ 85°C | -40°C ~ 85°C |
| Supplier Device Package | 28-SSOP | 28-SSOP | 28-SOIC | 28-SSOP |
| Ratio - S/H:ADC | 1:1 | 1:1 | 1:1 | 1:1 |
| Series | - | - | - | - |
| Reference Type | External, Internal | External, Internal | External, Internal | External, Internal |
| Architecture | Pipelined | Pipelined | Pipelined | Pipelined |
| Base Product Number | AD9225 | AD9223 | AD9225 | AD9225 |
| Voltage - Supply, Digital | 2.85V ~ 5.25V | 2.7V ~ 5.25V | 2.85V ~ 5.25V | 2.85V ~ 5.25V |
| Mounting Type | Surface Mount | Surface Mount | Surface Mount | Surface Mount |
| Configuration | S/H-ADC | S/H-ADC | S/H-ADC | S/H-ADC |
| Input Type | Differential, Single Ended | Differential, Single Ended | Differential, Single Ended | Differential, Single Ended |
| Sampling Rate (Per Second) | 25M | 3M | 25M | 25M |
| Number of Inputs | 1 | 1 | 1 | 1 |
| Number of Bits | 12 | 12 | 12 | 12 |
| Package | Tube | Tube | Tube | Tape & Reel (TR) |
| Package / Case | 28-SSOP (0.209", 5.30mm Width) | 28-SSOP (0.209", 5.30mm Width) | 28-SOIC (0.295", 7.50mm Width) | 28-SSOP (0.209", 5.30mm Width) |
| Number of A/D Converters | 1 | 1 | 1 | 1 |
| Data Interface | Parallel | Parallel | Parallel | Parallel |

AD9225ARS Datasheet PDF

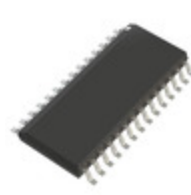
Download AD9225ARS pdf datasheets and Analog Devices Inc. documentation for AD9225ARS - Analog Devices Inc..

Datasheets

Cylindrical Battery Holders.pdf

Customers Also Interested in

Recommended Products

**AD9223ARSZ**Analog Devices Inc.
IC ADC 12BIT PIPELINED 28SSOP**AD9225AR**Analog Devices Inc.
IC ADC 12BIT PIPELINED 28SOIC**AD9225ARSZRL**Analog Devices Inc.
IC ADC 12BIT PIPELINED 28SSOP**AD9224ARSZRL**Analog Devices Inc.
IC ADC 12BIT PIPELINED 28SSOP**AD9224ARSZ**Analog Devices Inc.
IC ADC 12BIT PIPELINED 28SSOP**AD9224ARSZ-REEL7**

ADI (Analog Devices, Inc.)

**AD9226ASTRL**Analog Devices Inc.
IC ADC 12BIT PIPELINED 48LQFP**AD9225ARSZ**Analog Devices Inc.
IC ADC 12BIT PIPELINED 28SSOP**AD9223ARZ-REEL**Analog Devices Inc.
IC ADC 12BIT PIPELINED 28SOIC**AD9225ARZRL**Analog Devices Inc.
IC ADC 12BIT PIPELINED 28SOIC**AD9224ARS**

ADI (Analog Devices, Inc.)

**AD9226ARS**Analog Devices Inc.
IC ADC 12BIT PIPELINED 28SSOP**AD9224ARZ**

ADI (Analog Devices, Inc.)

**AD9225ARZ**Analog Devices Inc.
IC ADC 12BIT PIPELINED 28SOIC**AD9226AST**Analog Devices Inc.
IC ADC 12BIT PIPELINED 48LQFP**AD9223ARZ**Analog Devices Inc.
IC ADC 12BIT PIPELINED 28SOIC**AD9226ARSZ**Analog Devices Inc.
IC ADC 12BIT PIPELINED 28SSOP**AD9226ASTZ**Analog Devices Inc.
IC ADC 12BIT PIPELINED 48LQFP

Shipment

Delivery Time

In-stock items can be shipped within 24 hours. Some parts will be arranged for delivery within 1-2 days from the date all items arrive at our warehouse. And Allelco ships order once a day at about 17:00, except Sunday. Once the goods are shipped, the estimated delivery time depends on the shipping methods and Delivery destination. The table below shows are the logistic time for some common countries.

Delivery Cost

- > Use your express account for shipment if you have one.
 - > Use our account for the shipment. Refer to the table below for the approximate charges.
- (Different time frame / countries / package size has different price.)

Delivery Method

- > Global Common Shipment by DHL / UPS / FedEx / TNT / EMS / SF we support.
- > Others more shipping ways, please get in touch with your customer manager.

| Common Countries Logistic Time Reference | | |
|--|----------------|--------------------|
| Region | Country | Logistic Time(Day) |
| America | United States | 5 |
| | Brazil | 7 |
| Europe | Germany | 5 |
| | United Kingdom | 4 |
| | Italy | 5 |
| Oceania | Australia | 6 |
| | New Zealand | 7 |
| Asia | India | 6 |
| | Japan | 7 |
| Middle East | Israel | 6 |

| DHL & FedEx Shipment Charges Reference | |
|--|----------------------|
| Shipment charges(KG) | Reference DHL(USD\$) |
| 0.00kg-1.00kg | USD\$60.00 |
| 1.00kg-2.00kg | USD\$70.00 |
| 2.00kg-3.00kg | USD\$80.00 |

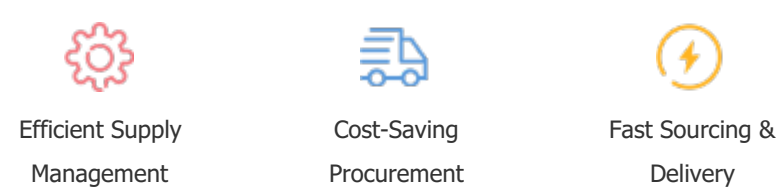
Note: The above table is for reference only. There may have some data bias for the uncontrollable factors.
Contact us if you have any questions.

Payment Support

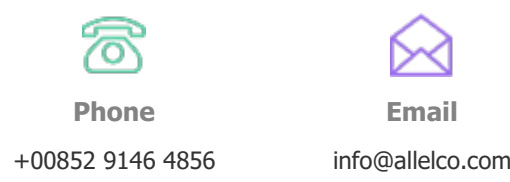
The payment method can be chosen from the methods shown below:
Wire Transfer (T/T, Bank Transfer), Western Union, Credit card, PayPal.



Your Faithful Supply Chain Partner -



Contact us if you have any questions.



Certifications & Memberships



[View More](#)



Contact us

Address: Flat/Rm C 13/F Harvard Commercial Building 105-111 Thomson Road, Wan Chai, Hong Kong
Phone: +00852 9146 4856
Fax: +00852 3010 8510
Email: info@Allelco.com