

Image may be representation.
See specifications for product details.



SS13-E3/61T

| | |
|--------------------------|--|
| Manufacturer Part Number | SS13-E3/61T |
| Manufacturer | Vishay General Semiconductor – Diodes Division |
| Allelco Part Number | 32D-SS13-E3/61T |
| ECAD Model | PCB Symbol, Footprint & 3D Model |
| Parts Description | DIODE SCHOTTKY 30V 1A DO214AC |
| Package | DO-214AC, SMA |
| Data sheet | SS12-SS16.pdf |
| RoHs Status | ROHS3 Compliant |

[Get a Quote](#)

SS13-E3/61T - Vishay General Semiconductor - Diodes Division. New Original in Stock. Download Linear Technology SS13-E3/61T datasheet/specifications on AllelcoElec.com.
Request a quote for SS13-E3/61T, please send us email: info@allelco.com

Specifications

SS13-E3/61T Tech Specifications
SS13-E3/61T - Vishay General Semiconductor - Diodes Division technical specifications, attributes, parameters

| Product Attribute | Attribute Value | Product Attribute | Attribute Value |
|-----------------------------------|--|----------------------------------|------------------|
| Manufacturer | Vishay General Semiconductor – Diodes Division | Package | Tape & Reel (TR) |
| Voltage - Forward (Vf) (Max) @ If | 500 mV @ 1 A | Operating Temperature - Junction | -65°C ~ 125°C |
| Voltage - DC Reverse (Vr) (Max) | 30 V | Mounting Type | Surface Mount |
| Technology | Schottky | Current - Reverse Leakage @ Vr | 200 µA @ 30 V |
| Supplier Device Package | DO-214AC (SMA) | Current - Average Rectified (Io) | 1A |
| Speed | Fast Recovery =< 500ns, > 200mA (Io) | Capacitance @ Vr, F | - |
| Series | - | Base Product Number | SS13 |
| Package / Case | DO-214AC, SMA | | |

Parts with Similar Specifications

The three parts on the right have similar specifications to Vishay General Semiconductor - Diodes Division SS13-E3/61T

| Product Attribute | | | | |
|-----------------------------------|--|--|--------------------------------------|--------------------------------------|
| Part Number | SS13-E3/61T | SS12P4S-M3/86A | SS13M RSG | SS12T3G |
| Manufacturer | Vishay General Semiconductor - Diodes Division | Vishay General Semiconductor - Diodes Division | Taiwan Semiconductor Corporation | onsemi |
| Series | - | eSMP® | - | - |
| Package | Tape & Reel (TR) | Tape & Reel (TR) | Tape & Reel (TR) | Tape & Reel (TR) |
| Speed | Fast Recovery =< 500ns, > 200mA (Io) | Fast Recovery =< 500ns, > 200mA (Io) | Fast Recovery =< 500ns, > 200mA (Io) | Fast Recovery =< 500ns, > 200mA (Io) |
| Mounting Type | Surface Mount | Surface Mount | Surface Mount | Surface Mount |
| Technology | Schottky | Schottky | Schottky | Schottky |
| Supplier Device Package | DO-214AC (SMA) | TO-277A (SMPC) | Micro SMA | SMA |
| Voltage - Forward (Vf) (Max) @ If | 500 mV @ 1 A | 600 mV @ 12 A | 520 mV @ 1 A | 470 mV @ 1 A |
| Operating Temperature - Junction | -65°C ~ 125°C | -55°C ~ 150°C | -55°C ~ 150°C | -55°C ~ 150°C |
| Voltage - DC Reverse (Vr) (Max) | 30 V | 30 V | 30 V | 20 V |
| Capacitance @ Vr, F | - | 750pF @ 4V, 1MHz | 50pF @ 4V, 1MHz | - |
| Package / Case | DO-214AC, SMA | TO-277, 3-PowerDFN | 2-SMD, Flat Lead | DO-214AC, SMA |
| Current - Reverse Leakage @ Vr | 200 µA @ 30 V | 800 µA @ 40 V | 5 µA @ 30 V | 45 µA @ 20 V |
| Current - Average Rectified (Io) | 1A | 12A | 1A | 1A |
| Base Product Number | SS13 | SS12P4 | SS13 | SS12 |

SS13-E3/61T Datasheet PDF

Download SS13-E3/61T pdf datasheets and Vishay General Semiconductor - Diodes Division documentation for SS13-E3/61T - Vishay General Semiconductor - Diodes Division.

Datasheets

[SS12-SS16.pdf](#)

PCN Assembly/Origin

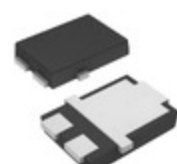
[Multiple Parts 21/Jun/2022.pdf](#)

Customers Also Interested in

Recommended Products



SS13 T/R
PANJIT



SS12P4S-M3/86A
Vishay General Semiconductor - Diodes Division
DIODE SCHOTTKY 30V 12A TO277A



SS12P4SHM3/86A
Electro-Films (EFI) / Vishay



SS13/11T
Electro-Films (EFI) / Vishay



SS13M RSG
Taiwan Semiconductor Corporation
DIODE SCHOTTKY 30V 1A MICRO SMA



SS12T3G
onsemi
DIODE SCHOTTKY 20V 1A SMA



SS1300AA
SILINCO



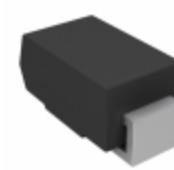
SS13E-TP
Micro Commercial Co
DIODE SCHOTTKY 30V 1A SMAE



SS12W_R2_00001
PANJIT



SS12T/R
PANJIT



SS13-E3/5AT
Vishay General Semiconductor -
Diodes Division
DIODE SCHOTTKY 30V 1A DO214AC



SS13 R2
Taiwan Semiconductor



SS13FL
onsemi
DIODE SCHOTTKY 30V 1A SOD123F



SS13HE
onsemi
DIODE SCHOTTKY 30V 1A SOD323HE



SS13FP
onsemi
DIODE SCHOTTKY 30V 1A SOD123HE



SS12_NL
Fairchild (onsemi)



SS13L R3
Taiwan Semiconductor



SS13 R3
Taiwan Semiconductor

Shipment

Delivery Time

In-stock items can be shipped within 24 hours. Some parts will be arranged for delivery within 1-2 days from the date all items arrive at our warehouse. And Allelco ships order once a day at about 17:00, except Sunday. Once the goods are shipped, the estimated delivery time depends on the shipping methods and Delivery destination. The table below shows are the logistic time for some common countries.

Delivery Cost

- > Use your express account for shipment if you have one.
- > Use our account for the shipment. Refer to the table below for the approximate charges.
(Different time frame / countries / package size has different price.)

Delivery Method

- > Global Common Shipment by DHL / UPS / FedEx / TNT / EMS / SF we support.
- > Others more shipping ways, please get in touch with your customer manager.

Common Countries Logistic Time Reference

| Region | Country | Logistic Time(Day) |
|-------------|----------------|--------------------|
| America | United States | 5 |
| | Brazil | 7 |
| Europe | Germany | 5 |
| | United Kingdom | 4 |
| | Italy | 5 |
| Oceania | Australia | 6 |
| | New Zealand | 7 |
| Asia | India | 6 |
| | Japan | 7 |
| Middle East | Israel | 6 |

DHL & FedEx Shipment Charges Reference

| Shipment charges(KG) | Reference DHL(USD\$) |
|----------------------|----------------------|
| 0.00kg-1.00kg | USD\$60.00 |
| 1.00kg-2.00kg | USD\$70.00 |
| 2.00kg-3.00kg | USD\$80.00 |

Note: The above table is for reference only. There may have some data bias for the uncontrollable factors.

Contact us if you have any questions.

Payment Support

The payment method can be chosen from the methods shown below:
Wire Transfer (T/T, Bank Transfer), Western Union, Credit card,
PayPal.



Your Faithful Supply Chain Partner -

- Efficient Supply Management
- Cost-Saving Procurement
- Fast Sourcing & Delivery

Contact us if you have any questions.

- Phone
+00852 9146 4856
- Email
info@allelco.com

Certifications & Memberships



View More



Contact us

Address: Flat/Rm C 13/F Harvard Commercial Building 105-111 Thomson Road, Wan Chai, Hong Kong
Phone: +00852 9146 4856
Fax: +00852 3010 8510
Email: info@Allelco.com