



Image may be representation.
See specifications for product details.



MIMXRT1021CAG4B

Manufacturer Part Number	MIMXRT1021CAG4B
Manufacturer	NXP Semiconductors
Allelco Part Number	32D-MIMXRT1021CAG4B
ECAD Model	PCB Symbol, Footprint & 3D Mode
Parts Description	IC MCU 32BIT EXT MEM 144LQFP
Package	144-LQFP
Data sheet	MIMXRT1021CAG4B.pdf
RoHs Status	ROHS3 Compliant

Get a Quote

MIMXRT1021CAG4B - NXP USA Inc..New Original in Stock. Download Linear Technology MIMXRT1021CAG4B datasheet/specifications on AllelcoElec.com.
Request a quote for MIMXRT1021CAG4B, please send us email: info@allelco.com

Specifications

MIMXRT1021CAG4B Tech Specifications
MIMXRT1021CAG4B - NXP USA Inc. technical specifications, attributes, parameters

Product Attribute	Attribute Value	Product Attribute	Attribute Value
Manufacturer	NXP Semiconductors	Oscillator Type	External, Internal
Voltage - Supply (Vcc/Vdd)	3V ~ 3.6V	Operating Temperature	-40°C ~ 105°C (TJ)
Supplier Device Package	144-LQFP (20x20)	Number of I/O	96
Speed	400MHz	Mounting Type	Surface Mount
Series	RT1020	EEPROM Size	-
RAM Size	256K x 8	Data Converters	A/D 19x12b
Program Memory Type	External Program Memory	Core Size	32-Bit Single-Core
Program Memory Size	-	Core Processor	ARM® Cortex®-M7
Peripherals	Brown-out Detect/Reset, DMA, POR, PWM, WDT	Connectivity	CANbus, EBI/EMI, Ethernet, I²C, MMC/SD/SDIO, SAI, SPDIF, SPI, UART/USART, USB OTG
Package / Case	144-LQFP	Base Product Number	MIMXRT1021
Package	Tray		

Parts with Similar Specifications

The three parts on the right have similar specifications to NXP USA Inc. MIMXRT1021CAG4B

Product Attribute				
Part Number	MIMXRT1021CAG4B	MIMXRT1015CAF4B	MIMXRT1024DAG5A	MIMXRT1051CVL5B
Manufacturer	NXP USA Inc.	NXP USA Inc.	NXP USA Inc.	NXP USA Inc.
Program Memory Type	External Program Memory	External Program Memory	FLASH	External Program Memory
Package	Tray	Tray	Tray	Tray
Supplier Device Package	144-LQFP (20x20)	100-LQFP (14x14)	144-LQFP (20x20)	196-LFBGA (10x10)
Peripherals	Brown-out Detect/Reset, DMA, POR, PWM, WDT	Brown-out Detect/Reset, DMA, POR, PWM, WDT	Brown-out Detect/Reset, DMA, POR, PWM, WDT	Brown-out Detect/Reset, DMA, POR, PWM, WDT
Package / Case	144-LQFP	100-LQFP	144-LQFP	196-LFBGA
Oscillator Type	External, Internal	External, Internal	External, Internal	External, Internal
Core Size	32-Bit Single-Core	32-Bit Single-Core	32-Bit Single-Core	32-Bit Single-Core
Voltage - Supply (Vcc/Vdd)	3V ~ 3.6V	3V ~ 3.6V	3V ~ 3.6V	3V ~ 3.6V
RAM Size	256K x 8	128K x 8	256K x 8	512K x 8
Program Memory Size	-	-	4MB (4M x 8)	-
Series	RT1020	RT1010	RT1024	RT1050
EEPROM Size	-	-	-	-
Core Processor	ARM® Cortex®-M7	ARM® Cortex®-M7	ARM® Cortex®-M7	ARM® Cortex®-M7
Mounting Type	Surface Mount	Surface Mount	Surface Mount	Surface Mount
Speed	400MHz	400MHz	500MHz	528MHz
Number of I/O	96	57	90	127
Data Converters	A/D 19x12b	A/D 9x12b	A/D 19x12b	A/D 20x12b
Base Product Number	MIMXRT1021	MIMXRT1015	MIMXRT1024	MIMXRT1051
Operating Temperature	-40°C ~ 105°C (TJ)	-40°C ~ 105°C (TJ)	0°C ~ 95°C (TJ)	-40°C ~ 105°C (TJ)
Connectivity	CANbus, EBI/EMI, Ethernet, I²C, MMC/SD/SDIO, SAI, SPDIF, SPI, UART/USART, USB OTG	EBI/EMI, I²C, SAI, SPDIF, SPI, UART/USART, USB2.0 OTG	CANbus, EBI/EMI, Ethernet, I²C, MMC/SD/SDIO, SAI, SPDIF, SPI, UART/USART, USB OTG	CANbus, EBI/EMI, Ethernet, I²C, MMC/SD/SDIO, SAI, SPDIF, SPI, UART/USART, USB OTG

MIMXRT1021CAG4B Datasheet PDF

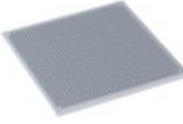
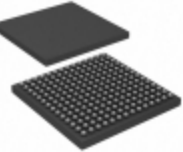
Download MIMXRT1021CAG4B pdf datasheets and NXP USA Inc. documentation for MIMXRT1021CAG4B - NXP USA Inc..

PCN Assembly/Origin

MXRT1020/RT1015 18/Nov/2022.pdf

Customers Also Interested in

Recommended Products

					
MIMXRT1015CAF4B NXP USA Inc. IC MCU 32BIT EXT MEM 100LQFP	MIMX8QX6AVLFZAC NXP USA Inc. I.MX8 QXP 21X21 REV B1	MIMXRT1024DAG5A NXP USA Inc. IC MCU 32BIT 4MB FLASH 144LQFP	MIMXRT1051CVL5B NXP USA Inc. IC MCU 32BIT EXT MEM 196MAPBGA	MIMXRT1021DAF5A NXP USA Inc. IC MCU 32BIT EXT MEM 100LQFP	MIMXRT1011CAE4A NXP USA Inc. IC MCU 32BIT EXT MEM 80FQFP
					
MIMXRT1021DAF5B NXP USA Inc. IC MCU 32BIT EXT MEM 100LQFP	MIMXRT1051CVL5A NXP USA Inc. IC MCU 32BIT EXT MEM 196MAPBGA	MIMXRT1021DAG5A NXP USA Inc. IC MCU 32BIT EXT MEM 144LQFP	MIMXRT1021DAG5B NXP USA Inc. IC MCU 32BIT EXT MEM 144LQFP	MIMXRT1011DAE5A NXP USA Inc. IC MCU 32BIT EXT MEM 80FQFP	MIMXRT1015CAF4A NXP USA Inc. IC MCU 32BIT EXT MEM 100LQFP
					
MIMXRT1051DVL6B NXP USA Inc. IC MCU 32BIT EXT MEM 196MAPBGA	MIMXRT1021CAF4A NXP USA Inc. IC MCU 32BIT EXT MEM 100LQFP	MIMXRT1051CVJ5B NXP USA Inc. I.MX RT1050 CROSSOVER PROCESSOR	MIMXRT1021CAG4A NXP USA Inc. IC MCU 32BIT EXT MEM 144LQFP	MIMXRT1024CAG4A NXP USA Inc. IC MCU 32BIT 4MB FLASH 144LQFP	MIMX8QM6AVUFFAB NXP USA Inc. MPU I.MX8 QUAD MAX

Shipment

Delivery Time

In-stock items can be shipped within 24 hours. Some parts will be arranged for delivery within 1-2 days from the date all items arrive at our warehouse. And Allelco ships order once a day at about 17:00, except Sunday. Once the goods are shipped, the estimated delivery time depends on the shipping methods and Delivery destination. The table below shows are the logistic time for some common countries.

Delivery Cost

> Use your express account for shipment if you have one.

> Use our account for the shipment. Refer to the table below for the approximate charges.

(Different time frame / countries / package size has different price.)

Delivery Method

> Global Common Shipment by DHL / UPS / FedEx / TNT / EMS / SF we support.

> Others more shipping ways, please get in touch with your customer manager.

Common Countries Logistic Time Reference		
Region	Country	Logistic Time(Day)
America	United States	5
	Brazil	7
Europe	Germany	5
	United Kingdom	4
	Italy	5
Oceania	Australia	6
	New Zealand	7
Asia	India	6
	Japan	7
Middle East	Israel	6

DHL & FedEx Shipment Charges Reference	
Shipment charges(KG)	Reference DHL(USD\$)
0.00kg-1.00kg	USD\$60.00
1.00kg-2.00kg	USD\$70.00
2.00kg-3.00kg	USD\$80.00

Note: The above table is for reference only. There may have some data bias for the uncontrollable factors.

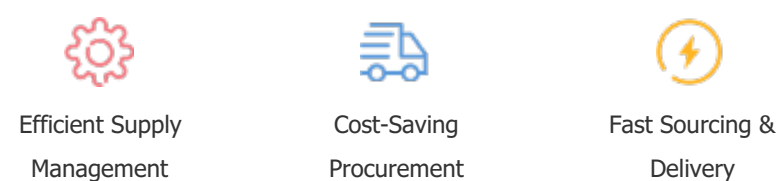
Contact us if you have any questions.

Payment Support

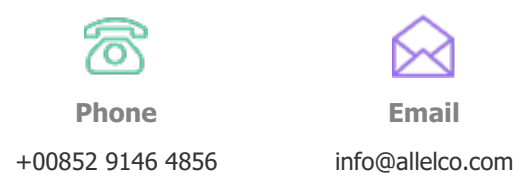
The payment method can be chosen from the methods shown below:
Wire Transfer (T/T, Bank Transfer), Western Union, Credit card, PayPal.



Your Faithful Supply Chain Partner -



Contact us if you have any questions.



Certifications & Memberships



View More