



Image may be representation.
See specifications for product details.



EPF8282AVTC100-3

Manufacturer Part Number	EPF8282AVTC100-3
Manufacturer	Intel
Allelco Part Number	32D-EPF8282AVTC100-3
ECAD Model	Request Free CAD Models
Parts Description	IC FPGA 78 I/O 100TQFP
Package	100-TQFP
Data sheet	FLEX 8000.pdf 100-TQFP Pkg Info.pdf

[Get a Quote](#)

EPF8282AVTC100-3 - Intel.New Original in Stock. Download Linear Technology EPF8282AVTC100-3 datasheet/specifications on AllelcoElec.com.
Request a quote for EPF8282AVTC100-3, please send us email: info@allelco.com

Specifications

EPF8282AVTC100-3 Tech Specifications
EPF8282AVTC100-3 - Intel technical specifications, attributes, parameters

Product Attribute	Attribute Value	Product Attribute	Attribute Value
Manufacturer	Intel	Number of Logic Elements/Cells	208
Voltage - Supply	4.75V ~ 5.25V	Number of LABs/CLBs	26
Supplier Device Package	100-TQFP (14x14)	Number of I/O	78
Series	FLEX 8000	Number of Gates	2500
Package / Case	100-TQFP	Mounting Type	Surface Mount
Package	Tray	Base Product Number	EPF8282
Operating Temperature	0°C ~ 70°C (TA)		

Parts with Similar Specifications

The three parts on the right have similar specifications to Intel EPF8282AVTC100-3

Product Attribute				
Part Number	EPF8282AVTC100-3	EPF8452AGC160-3	EPF8282ATC100-2	EPF8282AVTC100-4
Manufacturer	Intel	Altera	Intel	Altera
Number of Gates	2500	4000	2500	2500
Base Product Number	EPF8282	-	EPF8282	-
Package / Case	100-TQFP	160-BQFP	100-TQFP	100-TQFP
Voltage - Supply	4.75V ~ 5.25V	4.75V ~ 5.25V	4.75V ~ 5.25V	4.75V ~ 5.25V
Package	Tray	Bulk	Tray	Tray
Supplier Device Package	100-TQFP (14x14)	160-PQFP (28x28)	100-TQFP (14x14)	100-TQFP (14x14)
Number of LABs/CLBs	26	42	26	26
Operating Temperature	0°C ~ 70°C (TA)	0°C ~ 70°C (TA)	0°C ~ 70°C (TA)	0°C ~ 70°C (TA)
Mounting Type	Surface Mount	Surface Mount	Surface Mount	Surface Mount
Number of I/O	78	120	78	78
Number of Logic Elements/Cells	208	336	208	208
Series	FLEX 8000	FLEX 8000	FLEX 8000	FLEX 8000

EPF8282AVTC100-3 Datasheet PDF

Download EPF8282AVTC100-3 pdf datasheets and Intel documentation for EPF8282AVTC100-3 - Intel.

Datasheets

[FLEX 8000.pdf](#)

[100-TQFP Pkg Info.pdf](#)

PCN Packaging

[All Dev Pkg Chg 1/Aug/2018.pdf](#)

PCN Obsolescence/ EOL

[Multiple Devices 04/May/2007.pdf](#)

Customers Also Interested in

Recommended Products



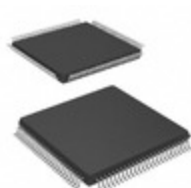
EPF8282TC100-2

Altera (Intel)



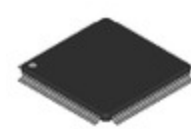
EPF8452AGC160-3

Altera
LOADABLE PLD, CMOS, CPGA160



EPF8282ATC100-2

Intel
IC FPGA 78 I/O 100TQFP



EPF8282AVTC100-4

Altera
IC FPGA 78 I/O 100TQFP



EPF8282TC100

Altera (Intel)

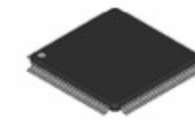
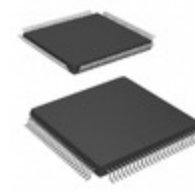


EPF8452ALC84-3

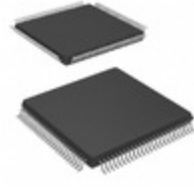
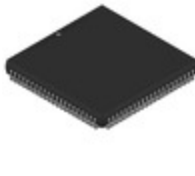
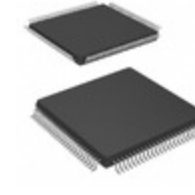
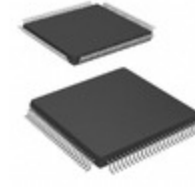
Intel
IC FPGA 68 I/O 84PLCC

**EPF8282ATC100-3**Intel
IC FPGA 78 I/O 100TQFP**EPF8282ATI100-3N**Intel
IC FPGA 78 I/O 100TQFP**EPF8282ATI100-3**Intel
IC FPGA 78 I/O 100TQFP**EPF8282ALI84-4**

Altera (Intel)

**EPF8282AVTC100-3**Altera
IC FPGA 78 I/O 100TQFP**EPF8282ATC100-2N**Intel
IC FPGA 78 I/O 100TQFP**EPF8282LC84-2**

Altera (Intel)

**EPF8282AVTC100-4**Intel
IC FPGA 78 I/O 100TQFP**EPF8452ALC84-3**Altera
IC FPGA 68 I/O 84PLCC**EPF8452ALC84-4**Intel
IC FPGA 68 I/O 84PLCC**EPF8282ATC100-4**Intel
IC FPGA 78 I/O 100TQFP**EPF8282ATC100-4N**Intel
IC FPGA 78 I/O 100TQFP

Shipment

Delivery Time

In-stock items can be shipped within 24 hours. Some parts will be arranged for delivery within 1-2 days from the date all items arrive at our warehouse. And Allelco ships order once a day at about 17:00, except Sunday. Once the goods are shipped, the estimated delivery time depends on the shipping methods and Delivery destination. The table below shows are the logistic time for some common countries.

Delivery Cost

> Use your express account for shipment if you have one.

> Use our account for the shipment. Refer to the table below for the approximate charges.

(Different time frame / countries / package size has different price.)

Delivery Method

> Global Common Shipment by DHL / UPS / FedEx / TNT / EMS / SF we support.

> Others more shipping ways, please get in touch with your customer manager.

Common Countries Logistic Time Reference		
Region	Country	Logistic Time(Day)
America	United States	5
	Brazil	7
Europe	Germany	5
	United Kingdom	4
	Italy	5
Oceania	Australia	6
	New Zealand	7
Asia	India	6
	Japan	7
Middle East	Israel	6

DHL & FedEx Shipment Charges Reference	
Shipment charges(KG)	Reference DHL(USD\$)
0.00kg-1.00kg	USD\$60.00
1.00kg-2.00kg	USD\$70.00
2.00kg-3.00kg	USD\$80.00

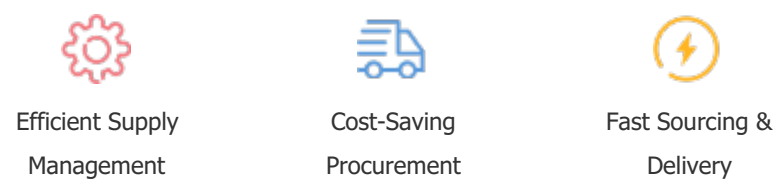
Note: The above table is for reference only. There may have some data bias for the uncontrollable factors.
Contact us if you have any questions.

Payment Support

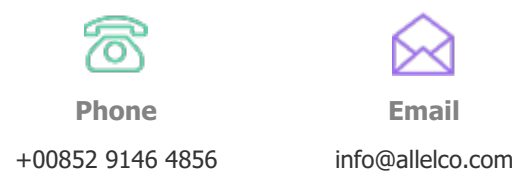
The payment method can be chosen from the methods shown below:
Wire Transfer (T/T, Bank Transfer), Western Union, Credit card, PayPal.



Your Faithful Supply Chain Partner -



Contact us if you have any questions.



Certifications & Memberships



[View More](#)



Contact us

Address: Flat/Rm C 13/F Harvard Commercial Building 105-111 Thomson Road, Wan Chai, Hong Kong

Phone: +00852 9146 4856

Fax: +00852 3010 8510

Email: info@allelco.com

Copyright © 2012-2023 AllelcoElec.com. All rights reserved.