

Image may be representation.
See specifications for product details.



MAX20090ATP/VY+T

Manufacturer Part Number	MAX20090ATP/VY+T
Manufacturer	Maxim Integrated
Allelco Part Number	32D-MAX20090ATP/VY+T
ECAD Model	Request Free CAD Models
Parts Description	IC LED DRIVER CTRLR PWM 20TQFN
Package	20-WFQFN Exposed Pad
Data sheet	MAX20090 Datasheet*.pdf
RoHs Status	ROHS3 Compliant

[Get a Quote](#)

MAX20090ATP/VY+T - Analog Devices Inc./Maxim Integrated.New Original in Stock. Download Linear Technology MAX20090ATP/VY+T datasheet/specifications on AllelcoElec.com.
Request a quote for MAX20090ATP/VY+T, please send us email: info@allelco.com

Specifications

MAX20090ATP/VY+T Tech Specifications
MAX20090ATP/VY+T - Analog Devices Inc./Maxim Integrated technical specifications, attributes, parameters

Product Attribute	Attribute Value	Product Attribute	Attribute Value
Manufacturer	Maxim Integrated	Operating Temperature	-40°C ~ 125°C (TA)
Voltage - Supply (Min)	5V	Number of Outputs	1
Voltage - Supply (Max)	65V	Mounting Type	Surface Mount, Wettable Flank
Voltage - Output	65V	Internal Switch(s)	No
Type	DC DC Controller	Frequency	200kHz ~ 2MHz
Topology	SEPIC, Step-Down (Buck), Step-Up (Boost)	Dimming	Analog, PWM
Supplier Device Package	20-TQFN-EP (4x4)	Current - Output / Channel	-
Series	Automotive, AEC-Q100	Base Product Number	MAX20090
Package / Case	20-WFQFN Exposed Pad	Applications	Automotive, Lighting
Package	Tape & Reel (TR)		

Parts with Similar Specifications

The three parts on the right have similar specifications to Analog Devices Inc./Maxim Integrated MAX20090ATP/VY+T

Product Attribute				
Part Number	MAX20090ATP/VY+T	MAX20097AUI/V+	MAX20090BATP/VY+T	MAX20096ATJ/VY+T
Manufacturer	Analog Devices Inc./Maxim Integrated	Analog Devices Inc./Maxim Integrated	Analog Devices Inc./Maxim Integrated	Analog Devices Inc./Maxim Integrated
Supplier Device Package	20-TQFN-EP (4x4)	28-TSSOP-EP	20-TQFN-EP (4x4)	32-TQFN-EP (5x5)
Operating Temperature	-40°C ~ 125°C (TA)	-40°C ~ 125°C	-40°C ~ 125°C (TA)	-40°C ~ 125°C
Mounting Type	Surface Mount, Wettable Flank	Surface Mount	Surface Mount, Wettable Flank	Surface Mount, Wettable Flank
Voltage - Supply (Max)	65V	65V	65V	65V
Voltage - Supply (Min)	5V	4.5V	5V	4.5V
Series	Automotive, AEC-Q100	-	Automotive, AEC-Q100	Automotive, AEC-Q100
Type	DC DC Controller	DC DC Controller	DC DC Controller	DC DC Controller
Dimming	Analog, PWM	Analog, PWM	Analog, PWM	Analog, PWM
Current - Output / Channel	-	-	-	-
Package / Case	20-WFQFN Exposed Pad	28-TSSOP (0.173", 4.40mm Width) Exposed Pad	20-WFQFN Exposed Pad	32-WFQFN Exposed Pad
Internal Switch(s)	No	No	No	No
Applications	Automotive, Lighting	Automotive, Commercial & Industrial Lighting	Automotive, Commercial & Industrial Lighting	Automotive, Lighting
Voltage - Output	65V	4.875V ~ 5.125V	65V	-
Base Product Number	MAX20090	MAX20097	MAX20090	MAX20096
Package	Tape & Reel (TR)	Tube	Tape & Reel (TR)	Tape & Reel (TR)
Topology	SEPIC, Step-Down (Buck), Step-Up (Boost)	Step-Down (Buck)	SEPIC, Step-Down (Buck), Step-Up (Boost)	Step-Down (Buck)
Number of Outputs	1	2	1	2
Frequency	200kHz ~ 2MHz	1MHz	200kHz ~ 2.2MHz	1MHz

MAX20090ATP/VY+T Datasheet PDF

Download MAX20090ATP/VY+T pdf datasheets and Analog Devices Inc./Maxim Integrated documentation for MAX20090ATP/VY+T - Analog Devices Inc./Maxim Integrated.

Datasheets

[MAX20090 Datasheet*.pdf](#)

Environmental Information

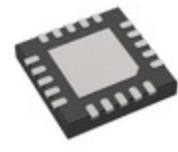
[Maxim Integrated REACH.pdf](#)

[Maxim Integrated RoHS Cert.pdf](#)

[Red Phosphorous Certificate.pdf](#)

Customers Also Interested in

Recommended Products



MAX20091ATM/V+T

Analog Devices / Maxim Integrated

MAX20097AUI/V+

Analog Devices Inc./Maxim Integrated
IC LED DRIVER CTRLR PWM 28TSSOP

MAX20090BATP/VY+T

Analog Devices Inc./Maxim Integrated
IC LED DRIVER CTRLR PWM 20TQFN

MAX20089ATPB/VY+

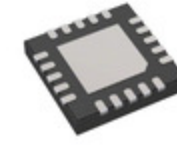
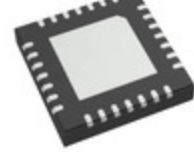
Analog Devices Inc./Maxim Integrated
IC CURRENT SWITCH 8% 20TQFN

MAX20087ATPA/VY

Analog Devices / Maxim Integrated

MAX20091ATM/V

Analog Devices / Maxim Integrated



MAX20086ATPA/VY+

Analog Devices Inc./Maxim Integrated
IC CURRENT SWITCH 8% 20TQFN

MAX20096ATJ/VY+T

Analog Devices Inc./Maxim Integrated
IC LED DRIVER CTRLR PWM 32TQFN

MAX20094ATIA/VY+T

Analog Devices Inc./Maxim Integrated
IC BATT CHG LI-ION 1CELL 28TQFN

MAX20087ATPA/VY+

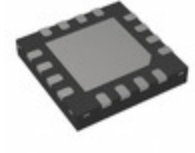
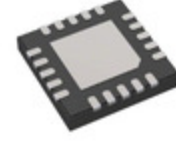
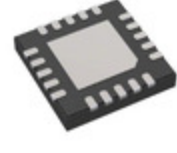
Analog Devices Inc./Maxim Integrated
IC CURRENT SWITCH 8% 20TQFN

MAX20089ATPA/VY+T

Analog Devices Inc./Maxim Integrated
IC CURRENT SWITCH 8% 20TQFN

MAX20090BATP/VY+

Analog Devices Inc./Maxim Integrated
IC LED DRIVER CTRLR PWM 20TQFN



MAX20092ATJ/VY+

Analog Devices Inc./Maxim Integrated
IC LED DRVR CTRLR PWM 32SWTQFN

MAX20087ATPA/VY+T

Analog Devices Inc./Maxim Integrated
IC CURRENT SWITCH 8% 20TQFN

MAX20084ATEA/VY+T

Analog Devices Inc./Maxim Integrated
DUAL LDO WITH I2C FOR PHANTOM AN

MAX20086ATPA/VY+T

Analog Devices Inc./Maxim Integrated
IC CURRENT SWITCH 8% 20TQFN

MAX20090AUP+T

Analog Devices / Maxim Integrated

MAX20098ATEB/VY+T

Analog Devices Inc./Maxim Integrated
36V >10A 5UA BUCK CONT

Shipment

Delivery Time

In-stock items can be shipped within 24 hours. Some parts will be arranged for delivery within 1-2 days from the date all items arrive at our warehouse. And Allelco ships order once a day at about 17:00, except Sunday. Once the goods are shipped, the estimated delivery time depends on the shipping methods and Delivery destination. The table below shows are the logistic time for some common countries.

Delivery Cost

- > Use your express account for shipment if you have one.
 - > Use our account for the shipment. Refer to the table below for the approximate charges.
- (Different time frame / countries / package size has different price.)

Delivery Method

- > Global Common Shipment by DHL / UPS / FedEx / TNT / EMS / SF we support.
- > Others more shipping ways, please get in touch with your customer manager.

Common Countries Logistic Time Reference		
Region	Country	Logistic Time(Day)
America	United States	5
	Brazil	7
Europe	Germany	5
	United Kingdom	4
	Italy	5
Oceania	Australia	6
	New Zealand	7
Asia	India	6
	Japan	7
Middle East	Israel	6

DHL & FedEx Shipment Charges Reference	
Shipment charges(KG)	Reference DHL(USD\$)
0.00kg-1.00kg	USD\$60.00
1.00kg-2.00kg	USD\$70.00
2.00kg-3.00kg	USD\$80.00

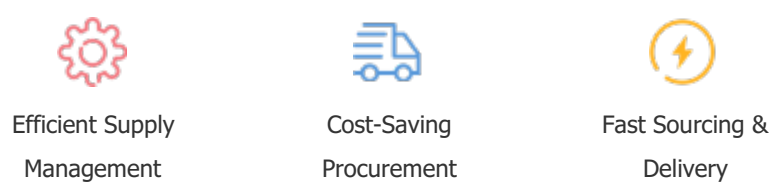
Note: The above table is for reference only. There may have some data bias for the uncontrollable factors. Contact us if you have any questions.

Payment Support

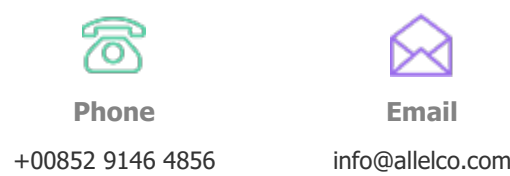
The payment method can be chosen from the methods shown below:
Wire Transfer (T/T, Bank Transfer), Western Union, Credit card, PayPal.



Your Faithful Supply Chain Partner -



Contact us if you have any questions.



Certifications & Memberships



[View More](#)

Contact us

Address: Flat/Rm C 13/F Harvard Commercial Building 105-111 Thomson Road, Wan Chai, Hong Kong
Phone: +00852 9146 4856
Fax: +00852 3010 8510
Email: info@Allelco.com