

Image may be representation.  
See specifications for product details.



## ADR430BRZ-REEL7

Manufacturer Part Number	<b>ADR430BRZ-REEL7</b>
Manufacturer	<b>Analog Devices, Inc.</b>
Allelco Part Number	32D-ADR430BRZ-REEL7
ECAD Model	Request Free CAD Models
Parts Description	IC VREF SERIES 0.05% 8SOIC
Package	8-SOIC (0.154", 3.90mm Width)
Data sheet	<b>ADR430,1,3,4,5.pdf</b>
RoHs Status	<b>ROHS3 Compliant</b>

**Get a Quote**

ADR430BRZ-REEL7 - Analog Devices Inc..New Original in Stock. Download Linear Technology ADR430BRZ-REEL7 datasheet/specifications on AllelcoElec.com.  
Request a quote for ADR430BRZ-REEL7, please send us email: [info@allelco.com](mailto:info@allelco.com)

### Specifications

ADR430BRZ-REEL7 Tech Specifications  
ADR430BRZ-REEL7 - Analog Devices Inc. technical specifications, attributes, parameters

Product Attribute	Attribute Value	Product Attribute	Attribute Value
Manufacturer	Analog Devices, Inc.	Package	Tape & Reel (TR)
Voltage - Output (Min/Fixed)	2.048V	Output Type	Fixed
Voltage - Input	4.1V ~ 18V	Operating Temperature	-40°C ~ 125°C (TA)
Tolerance	±0.05%	Noise - 10Hz to 10kHz	-
Temperature Coefficient	3ppm/°C	Noise - 0.1Hz to 10Hz	3.5µVp-p
Supplier Device Package	8-SOIC	Mounting Type	Surface Mount
Series	XFET®	Current - Supply	800µA
Reference Type	Series	Current - Output	30 mA
Package / Case	8-SOIC (0.154", 3.90mm Width)	Base Product Number	ADR430

### Parts with Similar Specifications

The three parts on the right have similar specifications to Analog Devices Inc. ADR430BRZ-REEL7

Product Attribute				
Part Number	ADR430BRZ-REEL7	ADR431ARZ	ADR431BR	ADR430ARMZ-REEL7
Manufacturer	Analog Devices Inc.	Analog Devices Inc.	Analog Devices Inc.	Analog Devices Inc.
Package	Tape & Reel (TR)	Tube	Tube	Tape & Reel (TR)
Series	XFET®	XFET®	XFET®	XFET®
Noise - 10Hz to 10kHz	-	-	-	-
Current - Supply	800µA	800µA	800µA	800µA
Tolerance	±0.05%	±0.12%	±0.04%	±0.15%
Current - Output	30 mA	30 mA	30 mA	30 mA
Temperature Coefficient	3ppm/°C	10ppm/°C	3ppm/°C	10ppm/°C
Voltage - Output (Min/Fixed)	2.048V	2.5V	2.5V	2.048V
Mounting Type	Surface Mount	Surface Mount	Surface Mount	Surface Mount
Package / Case	8-SOIC (0.154", 3.90mm Width)	8-SOIC (0.154", 3.90mm Width)	8-SOIC (0.154", 3.90mm Width)	8-TSSOP, 8-MSOP (0.118", 3.00mm Width)
Base Product Number	ADR430	ADR431	ADR431	ADR430
Supplier Device Package	8-SOIC	8-SOIC	8-SOIC	8-MSOP
Operating Temperature	-40°C ~ 125°C (TA)	-40°C ~ 125°C (TA)	-40°C ~ 125°C (TA)	-40°C ~ 125°C (TA)
Noise - 0.1Hz to 10Hz	3.5µVp-p	3.5µVp-p	3.5µVp-p	3.5µVp-p
Reference Type	Series	Series	Series	Series
Voltage - Input	4.1V ~ 18V	4.5V ~ 18V	4.5V ~ 18V	4.1V ~ 18V
Output Type	Fixed	Fixed	Fixed	Fixed

### ADR430BRZ-REEL7 Datasheet PDF

Download ADR430BRZ-REEL7 pdf datasheets and Analog Devices Inc. documentation for ADR430BRZ-REEL7 - Analog Devices Inc..

#### Datasheets

[ADR430,1,3,4,5.pdf](#)

#### Other Related Documents

[Tape and Reel Packaging.pdf](#)

### Customers Also Interested in

#### Recommended Products

**ADR431ARZ**Analog Devices Inc.  
IC VREF SERIES 0.12% 8SOIC**ADR431BR**Analog Devices Inc.  
IC VREF SERIES 0.04% 8SOIC**ADR430ARMZ-REEL7**Analog Devices Inc.  
IC VREF SERIES 0.15% 8MSOP**ADR430ARZ**Analog Devices Inc.  
IC VREF SERIES 0.15% 8SOIC**ADR430ARZ-REEL7**Analog Devices Inc.  
IC VREF SERIES 0.15% 8SOIC**ADR430ARMZ**Analog Devices Inc.  
IC VREF SERIES 0.15% 8MSOP**ADR431BRMZ**Analog Devices Inc.  
IC VREF SERIES 0.04% 8MSOP**ADR425BRZ**Analog Devices Inc.  
IC VREF SERIES 0.04% 8SOIC**ADR431ARZ-REEL7**Analog Devices Inc.  
IC VREF SERIES 0.12% 8SOIC**ADR425BR**Analog Devices Inc.  
IC VREF SERIES 0.04% 8SOIC**ADR431BRZ**Analog Devices Inc.  
IC VREF SERIES 0.04% 8SOIC**ADR431AR**Analog Devices Inc.  
IC VREF SERIES 2.5V 8-SOIC**ADR431BRZ-REEL7**Analog Devices Inc.  
IC VREF SERIES 0.04% 8SOIC**ADR431ARMZ**Analog Devices Inc.  
IC VREF SERIES 0.12% 8MSOP**ADR430BRZ**Analog Devices Inc.  
IC VREF SERIES 0.05% 8SOIC**ADR431ARMZ-REEL7**Analog Devices Inc.  
IC VREF SERIES 0.12% 8MSOP**ADR430BR**Analog Devices Inc.  
IC VREF SERIES 2.048V 8SOIC**ADR425BRZ-REEL7**Analog Devices Inc.  
IC VREF SERIES 0.04% 8SOIC

## Shipment

### Delivery Time

In-stock items can be shipped within 24 hours. Some parts will be arranged for delivery within 1-2 days from the date all items arrive at our warehouse. And Allelco ships order once a day at about 17:00, except Sunday. Once the goods are shipped, the estimated delivery time depends on the shipping methods and Delivery destination. The table below shows are the logistic time for some common countries.

### Delivery Cost

> Use your express account for shipment if you have one.

> Use our account for the shipment. Refer to the table below for the approximate charges.

(Different time frame / countries / package size has different price.)

### Delivery Method

> Global Common Shipment by DHL / UPS / FedEx / TNT / EMS / SF we support.

> Others more shipping ways, please get in touch with your customer manager.

Common Countries Logistic Time Reference		
Region	Country	Logistic Time(Day)
America	United States	5
	Brazil	7
Europe	Germany	5
	United Kingdom	4
	Italy	5
Oceania	Australia	6
	New Zealand	7
Asia	India	6
	Japan	7
Middle East	Israel	6

DHL & FedEx Shipment Charges Reference	
Shipment charges(KG)	Reference DHL(USD\$)
0.00kg-1.00kg	USD\$60.00
1.00kg-2.00kg	USD\$70.00
2.00kg-3.00kg	USD\$80.00

Note: The above table is for reference only. There may have some data bias for the uncontrollable factors.

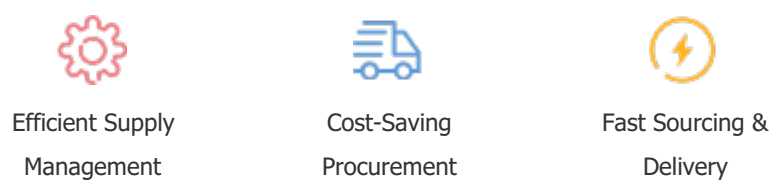
Contact us if you have any questions.

## Payment Support

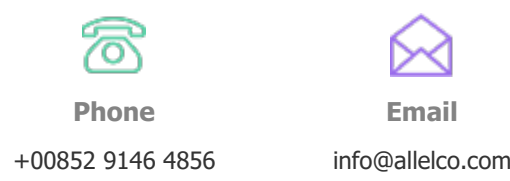
The payment method can be chosen from the methods shown below:  
Wire Transfer (T/T, Bank Transfer), Western Union, Credit card,  
PayPal.



## Your Faithful Supply Chain Partner -



Contact us if you have any questions.



## Certifications & Memberships



[View More](#)