

Image may be representation.  
See specifications for product details.



## LH1520AAC

Manufacturer Part Number	<b>LH1520AAC</b>
Manufacturer	<b>Vishay Semiconductor - Opto Division</b>
Allelco Part Number	32D-LH1520AAC
ECAD Model	PCB Footprint and Symbol
Parts Description	SSR RELAY SPST-NO 110MA 0-350V
Package	8-SMD (0.300", 7.62mm)
Data sheet	<b>LH1520AB/AAC(TR).pdf</b>
RoHs Status	ROHS3 Compliant

**Get a Quote**

LH1520AAC - Vishay Semiconductor Opto Division. New Original in Stock. Download Linear Technology LH1520AAC datasheet/specifications on AllelcoElec.com. Request a quote for LH1520AAC, please send us email: [info@allelco.com](mailto:info@allelco.com)

### Specifications

LH1520AAC Tech Specifications

LH1520AAC - Vishay Semiconductor Opto Division technical specifications, attributes, parameters

Product Attribute	Attribute Value	Product Attribute	Attribute Value
Manufacturer	Vishay Semiconductor - Opto Division	Package	Tube
Voltage - Load	0 V ~ 350 V	Output Type	AC, DC
Voltage - Input	1.26VDC	On-State Resistance (Max)	20 Ohms
Termination Style	Gull Wing	Mounting Type	Surface Mount
Supplier Device Package	8-SMD	Load Current	110 mA
Series	LH1520	Circuit	SPST-NO (1 Form A) x 2
Package / Case	8-SMD (0.300", 7.62mm)	Base Product Number	LH1520

### Parts with Similar Specifications

The three parts on the right have similar specifications to Vishay Semiconductor Opto Division LH1520AAC

Product Attribute				
Part Number	LH1520AAC	<b>LH1520AB</b>	<b>LH1518AAB</b>	<b>LH1521BACTR</b>
Manufacturer	Vishay Semiconductor Opto Division	Vishay Semiconductor Opto Division	Vishay Semiconductor Opto Division	Vishay Semiconductor Opto Division
On-State Resistance (Max)	20 Ohms	20 Ohms	20 Ohms	20 Ohms
Voltage - Input	1.26VDC	1.26VDC	1.26VDC	1.22VDC
Series	LH1520	LH1520	LH1518	LH1521
Circuit	SPST-NO (1 Form A) x 2	SPST-NO (1 Form A) x 2	SPST-NO (1 Form A)	SPST-NC (1 Form B) x 2
Termination Style	Gull Wing	PC Pin	Gull Wing	Gull Wing
Voltage - Load	0 V ~ 350 V	0 V ~ 350 V	0 V ~ 250 V	0 V ~ 350 V
Package	Tube	Tube	Tube	Tape & Reel (TR)
Mounting Type	Surface Mount	Through Hole	Surface Mount	Surface Mount
Load Current	110 mA	110 mA	300 mA	110 mA
Output Type	AC, DC	AC, DC	AC, DC	AC, DC
Package / Case	8-SMD (0.300", 7.62mm)	8-DIP (0.300", 7.62mm)	6-SMD (0.300", 7.62mm)	8-SMD (0.300", 7.62mm)
Supplier Device Package	8-SMD	8-DIP	6-SMD	8-SMD
Base Product Number	LH1520	LH1520	LH1518	LH1521

### LH1520AAC Datasheet PDF

Download LH1520AAC pdf datasheets and Vishay Semiconductor Opto Division documentation for LH1520AAC - Vishay Semiconductor Opto Division.

#### Datasheets

[LH1520AB/AAC\(TR\).pdf](#)

#### PCN Design/Specification

[LH Series Material/Assembly Chg 13/Dec/2017.pdf](#)

### Customers Also Interested in

#### Recommended Products

<b>LH1521AT</b>	<b>LH1517AABTR</b>	<b>LH1521AACTR</b>	<b>LH1520AB</b>	<b>LH1521BAC</b>	<b>LH1519AAB</b>
Electro-Films (EFI) / Vishay	Electro-Films (EFI) / Vishay	Electro-Films (EFI) / Vishay	Vishay Semiconductor Opto Division SSR RELAY SPST-NO 110MA 0-350V	Electro-Films (EFI) / Vishay	Siemens

**LH1518**

Electro-Films (EFI) / Vishay

**LH1519**

Electro-Films (EFI) / Vishay

**LH1518AAB**Vishay Semiconductor Opto Division  
SSR RELAY SPST-NO 300MA 0-250V**LH1521**

Cypress Semiconductor (Infineon Technologies)

**LH1520**

Siemens

**LH1521BACTR**Vishay Semiconductor Opto Division  
SSR RELAY SPST-NC 110MA 0-350V**LH1521AB**

INF

**LH1518AT**Vishay Semiconductor Opto Division  
SSR RELAY SPST-NO 300MA 0-250V**LH151B**

Electro-Films (EFI) / Vishay

**LH1518AABTR**Vishay Semiconductor Opto Division  
SSR RELAY SPST-NO 300MA 0-250V**LH1520AACTR**Vishay Semiconductor Opto Division  
SSR RELAY SPST-NO 110MA 0-350V**LH1517AT**

Electro-Films (EFI) / Vishay

## Shipment

### Delivery Time

In-stock items can be shipped within 24 hours. Some parts will be arranged for delivery within 1-2 days from the date all items arrive at our warehouse. And Allelco ships order once a day at about 17:00, except Sunday. Once the goods are shipped, the estimated delivery time depends on the shipping methods and Delivery destination. The table below shows are the logistic time for some common countries.

### Delivery Cost

> Use your express account for shipment if you have one.

> Use our account for the shipment. Refer to the table below for the approximate charges.

(Different time frame / countries / package size has different price.)

### Delivery Method

> Global Common Shipment by DHL / UPS / FedEx / TNT / EMS / SF we support.

> Others more shipping ways, please get in touch with your customer manager.

Common Countries Logistic Time Reference		
Region	Country	Logistic Time(Day)
America	United States	5
	Brazil	7
Europe	Germany	5
	United Kingdom	4
	Italy	5
Oceania	Australia	6
	New Zealand	7
Asia	India	6
	Japan	7
Middle East	Israel	6

DHL & FedEx Shipment Charges Reference	
Shipment charges(KG)	Reference DHL(USD\$)
0.00kg-1.00kg	USD\$60.00
1.00kg-2.00kg	USD\$70.00
2.00kg-3.00kg	USD\$80.00

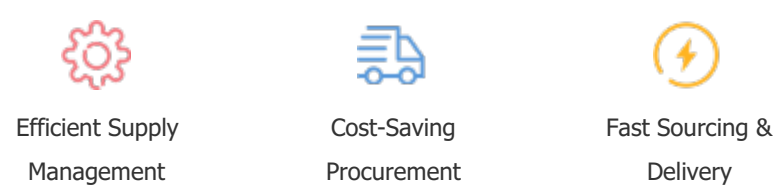
Note: The above table is for reference only. There may have some data bias for the uncontrollable factors.  
Contact us if you have any questions.

## Payment Support

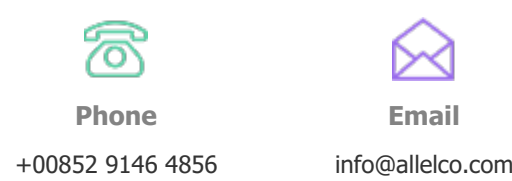
The payment method can be chosen from the methods shown below:  
Wire Transfer (T/T, Bank Transfer), Western Union, Credit card, PayPal.



## Your Faithful Supply Chain Partner -



Contact us if you have any questions.



## Certifications & Memberships



[View More](#)



### Contact us

Address: Flat/Rm C 13/F Harvard Commercial Building 105-111 Thomson Road, Wan Chai, Hong Kong

Phone: +00852 9146 4856

Fax: +00852 3010 8510

Email: info@Allelco.com

Copyright © 2012-2023 AllelcoElec.com. All rights reserved.