

Image may be representation.
See specifications for product details.



M24512-RDW6TP

Manufacturer Part Number	M24512-RDW6TP
Manufacturer	STMicroelectronics
Allelco Part Number	32D-M24512-RDW6TP
ECAD Model	PCB Symbol, Footprint & 3D Model
Parts Description	IC EEPROM 512KBIT I2C 8TSSOP
Package	8-TSSOP (0.173", 4.40mm Width)
Data sheet	M24512-x.pdf
RoHs Status	ROHS3 Compliant

Get a Quote

M24512-RDW6TP - STMicroelectronics. New Original in Stock. Download Linear Technology M24512-RDW6TP datasheet/specifications on AllelcoElec.com. Request a quote for M24512-RDW6TP, please send us email: info@allelco.com

Specifications

M24512-RDW6TP Tech Specifications

M24512-RDW6TP - STMicroelectronics technical specifications, attributes, parameters

Product Attribute	Attribute Value	Product Attribute	Attribute Value
Manufacturer	STMicroelectronics	Mounting Type	Surface Mount
Write Cycle Time - Word, Page	5ms	Memory Type	Non-Volatile
Voltage - Supply	1.8V ~ 5.5V	Memory Size	512Kbit
Technology	EEPROM	Memory Organization	64K x 8
Supplier Device Package	8-TSSOP	Memory Interface	I ² C
Series	-	Memory Format	EEPROM
Package / Case	8-TSSOP (0.173", 4.40mm Width)	Clock Frequency	1 MHz
Package	Tape & Reel (TR)	Base Product Number	M24512
Operating Temperature	-40°C ~ 85°C (TA)	Access Time	500 ns

Parts with Similar Specifications

The three parts on the right have similar specifications to STMicroelectronics M24512-RDW6TP

Product Attribute				
Part Number	M24512-RDW6TP	M24512-RMC6TG	M24512-DRMN6TP	M24512-DFDW6TP
Manufacturer	STMicroelectronics	STMicroelectronics	STMicroelectronics	STMicroelectronics
Operating Temperature	-40°C ~ 85°C (TA)	-40°C ~ 85°C (TA)	-40°C ~ 85°C (TA)	-40°C ~ 85°C (TA)
Memory Organization	64K x 8	64K x 8	64K x 8	64K x 8
Technology	EEPROM	EEPROM	EEPROM	EEPROM
Supplier Device Package	8-TSSOP	8-UFDFPN (2x3)	8-SOIC	8-TSSOP
Memory Format	EEPROM	EEPROM	EEPROM	EEPROM
Package / Case	8-TSSOP (0.173", 4.40mm Width)	8-UFDFN Exposed Pad	8-SOIC (0.154", 3.90mm Width)	8-TSSOP (0.173", 4.40mm Width)
Base Product Number	M24512	M24512	M24512	M24512
Package	Tape & Reel (TR)	Tape & Reel (TR)	Tape & Reel (TR)	Tape & Reel (TR)
Memory Interface	I ² C	I ² C	I ² C	I ² C
Access Time	500 ns	500 ns	500 ns	500 ns
Memory Type	Non-Volatile	Non-Volatile	Non-Volatile	Non-Volatile
Clock Frequency	1 MHz	1 MHz	1 MHz	1 MHz
Voltage - Supply	1.8V ~ 5.5V	1.8V ~ 5.5V	1.8V ~ 5.5V	1.7V ~ 5.5V
Write Cycle Time - Word, Page	5ms	5ms	5ms	5ms
Series	-	-	-	-
Mounting Type	Surface Mount	Surface Mount	Surface Mount	Surface Mount
Memory Size	512Kbit	512Kbit	512Kbit	512Kbit

M24512-RDW6TP Datasheet PDF

Download M24512-RDW6TP pdf datasheets and STMicroelectronics documentation for M24512-RDW6TP - STMicroelectronics.

PCN Packaging

[Box Label Chg 28/Jul/2016.pdf](#)

[Mult Dev Inner Pkg Chg 30/Oct/2019.pdf](#)

PCN Other

[2.73KHz.pdf](#)

HTML Datasheet

[M24512-x.pdf](#)

Customers Also Interested in

Recommended Products



M24512-RMC6TG

STMicroelectronics
IC EEPROM 512KBIT I2C 8UFDFPN



M24512-DRMN6TP

STMicroelectronics
IC EEPROM 512KBIT I2C 1MHZ 8SOIC



M24512-DFDW6TP

STMicroelectronics
IC EEPROM 512KBIT I2C 8TSSOP



M24512-DRDW8TP/K

STMicroelectronics
IC EEPROM 512KBIT I2C 8TSSOP



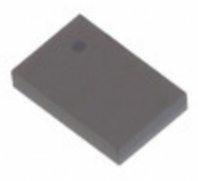
M24512-DRMN8TP/K

STMicroelectronics
IC EEPROM 512KBIT I2C 1MHZ 8SOIC



M24512-RMN6P

STMicroelectronics
IC EEPROM 512KBIT I2C 1MHZ 8SOIC



M24512-DFCS6TP/K

STMicroelectronics
IC EEPROM 512KBIT I2C 8WLCSP



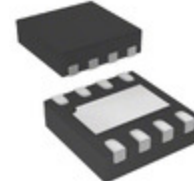
M24512-DRMF3TG/K

STMicroelectronics
IC EEPROM 512KBIT I2C 1MHZ 8MLP



M24512-RMN6TP

STMicroelectronics
IC EEPROM 512KBIT I2C 1MHZ 8SOIC



M24512-RMB6TG

STMicroelectronics
IC EEPROM 512KBIT I2C 8UFDFPN



M24512-DRDW3TP/K

STMicroelectronics
IC EEPROM 512KBIT I2C 8TSSOP



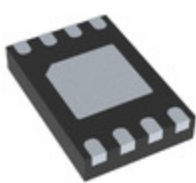
M24512-WMN6P

STMicroelectronics
IC EEPROM 512KBIT I2C 1MHZ 8SOIC



M24512-DRMN3TP/K

STMicroelectronics
IC EEPROM 512KBIT I2C 1MHZ 8SOIC



M24512-DFMC6TG

STMicroelectronics
IC EEPROM 512KBIT I2C 8UFDFPN



M24512-WMN6TPKHB

STMicroelectronics



M24512-WDW6TP

STMicroelectronics
IC EEPROM 512KBIT I2C 8TSSOP



M24512-DFMN6TP

STMicroelectronics
IC EEPROM 512KBIT I2C 1MHZ 8SOIC



M24512-WMN6TP

STMicroelectronics
IC EEPROM 512KBIT I2C 1MHZ 8SOIC

Shipment

Delivery Time

In-stock items can be shipped within 24 hours. Some parts will be arranged for delivery within 1-2 days from the date all items arrive at our warehouse. And Allelco ships order once a day at about 17:00, except Sunday. Once the goods are shipped, the estimated delivery time depends on the shipping methods and Delivery destination. The table below shows are the logistic time for some common countries.

Delivery Cost

> Use your express account for shipment if you have one.

> Use our account for the shipment. Refer to the table below for the approximate charges.

(Different time frame / countries / package size has different price.)

Delivery Method

> Global Common Shipment by DHL / UPS / FedEx / TNT / EMS / SF we support.

> Others more shipping ways, please get in touch with your customer manager.

Common Countries Logistic Time Reference		
Region	Country	Logistic Time(Day)
America	United States	5
	Brazil	7
Europe	Germany	5
	United Kingdom	4
	Italy	5
Oceania	Australia	6
	New Zealand	7
Asia	India	6
	Japan	7
Middle East	Israel	6

DHL & FedEx Shipment Charges Reference	
Shipment charges(KG)	Reference DHL(USD\$)
0.00kg-1.00kg	USD\$60.00
1.00kg-2.00kg	USD\$70.00
2.00kg-3.00kg	USD\$80.00

Note: The above table is for reference only. There may have some data bias for the uncontrollable factors.

Contact us if you have any questions.

Payment Support

The payment method can be chosen from the methods shown below:
Wire Transfer (T/T, Bank Transfer), Western Union, Credit card, PayPal.



Your Faithful Supply Chain Partner -



Efficient Supply Management



Cost-Saving Procurement



Fast Sourcing & Delivery

Contact us if you have any questions.



Phone

+00852 9146 4856



Email

info@allelco.com

Certifications & Memberships



View More



ALLELCO LIMITED
WWW.ALLELCOELEC.COM

Contact us

Address: Flat/Rm C 13/F Harvard Commercial Building 105-111 Thomson Road, Wan Chai, Hong Kong

Phone: +00852 9146 4856

Fax: +00852 3010 8510

Email: info@Allelco.com

Copyright © 2012-2023 AllelcoElec.com. All rights reserved.