

Image may be representation.  
See specifications for product details.



## MAX3840ETJ+

Manufacturer Part Number	<b>MAX3840ETJ+</b>
Manufacturer	<b>Maxim Integrated</b>
Allelco Part Number	32D-MAX3840ETJ+
ECAD Model	Request Free CAD Models
Parts Description	IC INTERFACE SPECIALIZED 32TQFN
Package	32-WFQFN Exposed Pad
Data sheet	<b>MAX3840.pdf</b>
RoHs Status	<b>ROHS3 Compliant</b>

**Get a Quote**

MAX3840ETJ+ - Analog Devices Inc./Maxim Integrated.New Original in Stock. Download Linear Technology MAX3840ETJ+ datasheet/specifications on AllelcoElec.com. Request a quote for MAX3840ETJ+, please send us email: [info@allelco.com](mailto:info@allelco.com)

### Specifications

MAX3840ETJ+ Tech Specifications

MAX3840ETJ+ - Analog Devices Inc./Maxim Integrated technical specifications, attributes, parameters

Product Attribute	Attribute Value	Product Attribute	Attribute Value
Manufacturer	Maxim Integrated	Package	Tube
Voltage - Supply	3V ~ 3.6V	Mounting Type	Surface Mount
Supplier Device Package	32-TQFN (5x5)	Interface	-
Series	-	Base Product Number	MAX3840
Package / Case	32-WFQFN Exposed Pad	Applications	Data Transport

### Parts with Similar Specifications

The three parts on the right have similar specifications to Analog Devices Inc./Maxim Integrated MAX3840ETJ+

Product Attribute				
Part Number	MAX3840ETJ+	MAX3841ETG+T	MAX3840ETJ+T	MAX3841ETG+
Manufacturer	Analog Devices Inc./Maxim Integrated	Analog Devices Inc./Maxim Integrated	Analog Devices Inc./Maxim Integrated	Analog Devices Inc./Maxim Integrated
Package / Case	32-WFQFN Exposed Pad	24-WFQFN Exposed Pad	32-WFQFN Exposed Pad	24-WFQFN Exposed Pad
Voltage - Supply	3V ~ 3.6V	3V ~ 3.6V	3V ~ 3.6V	3V ~ 3.6V
Series	-	-	-	-
Mounting Type	Surface Mount	Surface Mount	Surface Mount	Surface Mount
Applications	Data Transport	Data Transport	Data Transport	Data Transport
Supplier Device Package	32-TQFN (5x5)	24-TQFN (4x4)	32-TQFN (5x5)	24-TQFN (4x4)
Package	Tube	Tape & Reel (TR)	Tape & Reel (TR)	Tube
Base Product Number	MAX3840	MAX3841	MAX3840	MAX3841
Interface	-	-	-	-

### MAX3840ETJ+ Datasheet PDF

Download MAX3840ETJ+ pdf datasheets and Analog Devices Inc./Maxim Integrated documentation for MAX3840ETJ+ - Analog Devices Inc./Maxim Integrated.

#### Datasheets

[MAX3840.pdf](#)

#### Environmental Information

[Maxim Integrated REACH.pdf](#)

[Maxim Integrated RoHS Cert.pdf](#)

#### Part Numbering Guide

[Part Numbering System.pdf](#)

#### Application Notes

[MAX3840: Line and System Loopback with the MAX3840.pdf](#)

### Customers Also Interested in

#### Recommended Products



#### MAX3840ETJ

Analog Devices / Maxim Integrated



#### MAX383EPE

Analog Devices / Maxim Integrated



#### MAX381ESE+

Analog Devices Inc./Maxim Integrated  
IC SWITCH SPST-NOX2 350HM 16SOIC



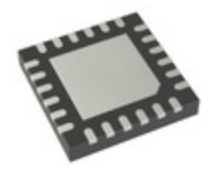
#### MAX383CSE+T

Analog Devices Inc./Maxim Integrated  
IC SWITCH SPDT X 2 350HM 16SOIC



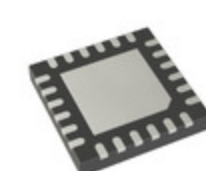
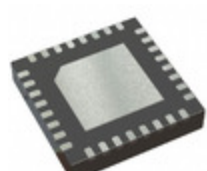
#### MAX3831UCB

Analog Devices / Maxim Integrated



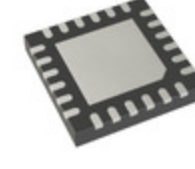
#### MAX3841ETG+T

Analog Devices Inc./Maxim Integrated  
IC INTERFACE SPECIALIZED 24TQFN



**MAX3840ETJ+T**Analog Devices Inc./Maxim Integrated  
IC INTERFACE SPECIALIZED 32TQFN**MAX385ESE+**Analog Devices Inc./Maxim Integrated  
IC SWITCH DUAL DPST 16SOIC**MAX383CSE**Analog Devices Inc./Maxim Integrated  
IC SWITCH SPDT X 2 35OHM 16SOIC**MAX383ESE**Analog Devices Inc./Maxim Integrated  
IC SWITCH SPDT X 2 35OHM 16SOIC**MAX385CPE**Analog Devices Inc./Maxim Integrated  
IC SWITCH DPST-NOX2 35OHM 16DIP**MAX3845UCQ+D**Analog Devices Inc./Maxim Integrated  
IC VIDEO HDMI/DVI SWITCH 100TQFP**MAX384CWN**Analog Devices Inc./Maxim Integrated  
IC MULTIPLEXER 4 X 1:1 18SOIC**MAX381ESE**

Analog Devices / Maxim Integrated

**MAX3841ETG+**Analog Devices Inc./Maxim Integrated  
IC INTERFACE SPECIALIZED 24TQFN**MAX3841ETG**Analog Devices Inc./Maxim Integrated  
IC INTERFACE SPECIALIZED 24TQFN**MAX383ESE-T**

Analog Devices / Maxim Integrated

**MAX383ESE+T**Analog Devices Inc./Maxim Integrated  
IC SWITCH SPDT X 2 35OHM 16SOIC**Shipment****Delivery Time**

In-stock items can be shipped within 24 hours. Some parts will be arranged for delivery within 1-2 days from the date all items arrive at our warehouse. And Allelco ships order once a day at about 17:00, except Sunday. Once the goods are shipped, the estimated delivery time depends on the shipping methods and Delivery destination. The table below shows are the logistic time for some common countries.

**Delivery Cost**

> Use your express account for shipment if you have one.

> Use our account for the shipment. Refer to the table below for the approximate charges.

(Different time frame / countries / package size has different price.)

**Delivery Method**

> Global Common Shipment by DHL / UPS / FedEx / TNT / EMS / SF we support.

> Others more shipping ways, please get in touch with your customer manager.

**Common Countries Logistic Time Reference**

Region	Country	Logistic Time(Day)
America	United States	5
	Brazil	7
Europe	Germany	5
	United Kingdom	4
	Italy	5
Oceania	Australia	6
	New Zealand	7
Asia	India	6
	Japan	7
Middle East	Israel	6

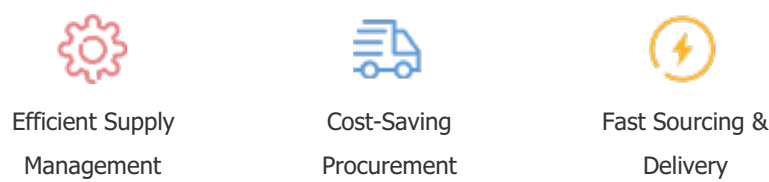
**DHL & FedEx Shipment Charges Reference**

Shipment charges(KG)	Reference DHL(USD\$)
0.00kg-1.00kg	USD\$60.00
1.00kg-2.00kg	USD\$70.00
2.00kg-3.00kg	USD\$80.00

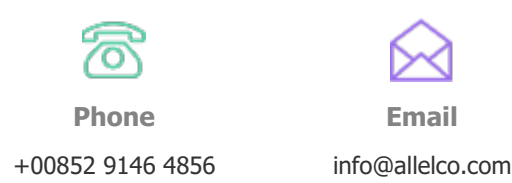
Note: The above table is for reference only. There may have some data bias for the uncontrollable factors.  
Contact us if you have any questions.

**Payment Support**

The payment method can be chosen from the methods shown below:  
Wire Transfer (T/T, Bank Transfer), Western Union, Credit card, PayPal.

**Your Faithful Supply Chain Partner -**

Contact us if you have any questions.

**Certifications & Memberships**

[View More](#)

**Contact us**

Address: Flat/Rm C 13/F Harvard Commercial Building 105-111 Thomson Road, Wan Chai, Hong Kong  
Phone: +00852 9146 4856  
Fax: +00852 3010 8510  
Email: info@Allelco.com

Copyright © 2012-2023 AllelcoElec.com. All rights reserved.