



Image may be representation.
See specifications for product details.



ADUM7442ARQZ-RL7

Manufacturer Part Number	ADUM7442ARQZ-RL7
Manufacturer	Analog Devices, Inc.
Allelco Part Number	32D-ADUM7442ARQZ-RL7
ECAD Model	PCB Symbol, Footprint & 3D Model
Parts Description	DGTL ISO 1000VRMS 4CH GP 16QSOP
Package	16-SSOP (0.154", 3.90mm Width)
Data sheet	Cylindrical Battery Holders.pdf
RoHs Status	ROHS3 Compliant

Get a Quote

ADUM7442ARQZ-RL7 - Analog Devices Inc..New Original in Stock. Download Linear Technology ADUM7442ARQZ-RL7 datasheet/specifications on AllelcoElec.com. Request a quote for ADUM7442ARQZ-RL7, please send us email: info@allelco.com

Specifications

ADUM7442ARQZ-RL7 Tech Specifications
ADUM7442ARQZ-RL7 - Analog Devices Inc. technical specifications, attributes, parameters

Product Attribute	Attribute Value	Product Attribute	Attribute Value
Manufacturer	Analog Devices, Inc.	Package	Tape & Reel (TR)
Voltage - Supply	3V ~ 5.5V	Operating Temperature	-40°C ~ 105°C
Voltage - Isolation	1000Vrms	Number of Channels	4
Type	General Purpose	Mounting Type	Surface Mount
Technology	Magnetic Coupling	Isolated Power	No
Supplier Device Package	16-QSOP	Inputs - Side 1/Side 2	2/2
Series	iCoupler®	Data Rate	1Mbps
Rise / Fall Time (Typ)	2ns, 2ns	Common Mode Transient Immunity (Min)	15kV/μs
Pulse Width Distortion (Max)	25ns	Channel Type	Unidirectional
Propagation Delay tpLH / tpHL (Max)	75ns, 75ns	Base Product Number	ADUM7442
Package / Case	16-SSOP (0.154", 3.90mm Width)		

Parts with Similar Specifications

The three parts on the right have similar specifications to Analog Devices Inc. ADUM7442ARQZ-RL7

Product Attribute				
Part Number	ADUM7442ARQZ-RL7	ADUM7440CRQZ-RL7	ADUM7640CRQZ-RL7	ADUM7640ARQZ
Manufacturer	Analog Devices Inc.	Analog Devices Inc.	Analog Devices Inc.	Analog Devices Inc.
Rise / Fall Time (Typ)	2ns, 2ns	2ns, 2ns	2ns, 2ns	2ns, 2ns
Inputs - Side 1/Side 2	2/2	4/0	6/0	6/0
Type	General Purpose	General Purpose	General Purpose	General Purpose
Package / Case	16-SSOP (0.154", 3.90mm Width)	16-SSOP (0.154", 3.90mm Width)	20-SSOP (0.154", 3.90mm Width)	20-SSOP (0.154", 3.90mm Width)
Common Mode Transient Immunity (Min)	15kV/μs	15kV/μs	15kV/μs	15kV/μs
Data Rate	1Mbps	25Mbps	25Mbps	1Mbps
Propagation Delay tpLH / tpHL (Max)	75ns, 75ns	50ns, 50ns	50ns, 50ns	75ns, 75ns
Package	Tape & Reel (TR)	Tape & Reel (TR)	Tape & Reel (TR)	Tube
Series	iCoupler®	iCoupler®	iCoupler®	iCoupler®
Voltage - Isolation	1000Vrms	1000Vrms	1000Vrms	1000Vrms
Pulse Width Distortion (Max)	25ns	5ns	6ns	25ns
Mounting Type	Surface Mount	Surface Mount	Surface Mount	Surface Mount
Channel Type	Unidirectional	Unidirectional	Unidirectional	Unidirectional
Isolated Power	No	No	No	No
Base Product Number	ADUM7442	ADUM7440	ADUM7640	ADUM7640
Operating Temperature	-40°C ~ 105°C	-40°C ~ 105°C	-40°C ~ 105°C	-40°C ~ 105°C
Supplier Device Package	16-QSOP	16-QSOP	20-QSOP	20-QSOP
Number of Channels	4	4	6	6
Technology	Magnetic Coupling	Magnetic Coupling	Magnetic Coupling	Magnetic Coupling
Voltage - Supply	3V ~ 5.5V	3V ~ 5.5V	3V ~ 5.5V	3V ~ 5.5V

ADUM7442ARQZ-RL7 Datasheet PDF

Download ADUM7442ARQZ-RL7 pdf datasheets and Analog Devices Inc. documentation for ADUM7442ARQZ-RL7 - Analog Devices Inc..


Datasheets

[Cylindrical Battery Holders.pdf](#)

Other Related Documents

[Tape and Reel Packaging.pdf](#)

PCN Assembly/Origin

 2.73KHz.pdf

PCN Design/Specification

 Polyimide Layer Addition 19/Aug/2015.pdf

Customers Also Interested in

Recommended Products



ADUM7440CRQZ-RL7

Analog Devices Inc.
DGTL ISO 1000VRMS 4CH GP
16QSOP



ADUM7640CRQZ-RL7

Analog Devices Inc.
DGTL ISO 1000VRMS 6CH GP
20QSOP



ADUM7640ARQZ

Analog Devices Inc.
DGTL ISO 1000VRMS 6CH GP
20QSOP



ADUM7640CRQZ

Analog Devices Inc.
DGTL ISO 1000VRMS 6CH GP
20QSOP



ADUM7642ARQZ-RL7

Analog Devices Inc.
DGTL ISO 1000VRMS 6CH GP
20QSOP



ADUM7441ARQZ

Analog Devices Inc.
DGTL ISO 1000VRMS 4CH GP
16QSOP



ADUM7440CRQZ

Analog Devices Inc.
DGTL ISO 1000VRMS 4CH GP
16QSOP



ADUM7442CRQZ

Analog Devices Inc.
DGTL ISO 1000VRMS 4CH GP
16QSOP



ADUM7441CRQZ

Analog Devices Inc.
DGTL ISO 1000VRMS 4CH GP
16QSOP



ADUM7641CRQZ-RL7

Analog Devices Inc.
DGTL ISO 1000VRMS 6CH GP
20QSOP



ADUM7510BRQZ-RL7

Analog Devices Inc.
DGTL ISO 1000VRMS 5CH GP
16QSOP



ADUM7440ARQZ

Analog Devices Inc.
DGTL ISO 1000VRMS 4CH GP
16QSOP



ADUM7441CRQZ-RL7

Analog Devices Inc.
DGTL ISO 1000VRMS 4CH GP
16QSOP



ADUM7441ARQZ-RL7

Analog Devices Inc.
DGTL ISO 1000VRMS 4CH GP
16QSOP



ADUM7510BRWZ-RL

Analog Devices Inc.
DGTL ISO 1KV 5CH GEN PURP
16QSOP



ADUM7440ARQZ-RL7

Analog Devices Inc.
DGTL ISO 1000VRMS 4CH GP
16QSOP



ADUM7510BRQZ

Analog Devices Inc.
DGTL ISO 1000VRMS 5CH GP
16QSOP



ADUM7510BRWZ

Analog Devices Inc.
DGTL ISO 1KV 5CH GEN PURP
16QSOP

Shipment

Delivery Time

In-stock items can be shipped within 24 hours. Some parts will be arranged for delivery within 1-2 days from the date all items arrive at our warehouse. And Allelco ships order once a day at about 17:00, except Sunday. Once the goods are shipped, the estimated delivery time depends on the shipping methods and Delivery destination. The table below shows are the logistic time for some common countries.

Delivery Cost

- > Use your express account for shipment if you have one.
 - > Use our account for the shipment. Refer to the table below for the approximate charges.
- (Different time frame / countries / package size has different price.)

Delivery Method

- > Global Common Shipment by DHL / UPS / FedEx / TNT / EMS / SF we support.
- > Others more shipping ways, please get in touch with your customer manager.

Common Countries Logistic Time Reference

Region	Country	Logistic Time(Day)
America	United States	5
	Brazil	7
Europe	Germany	5
	United Kingdom	4
	Italy	5
Oceania	Australia	6
	New Zealand	7
Asia	India	6
	Japan	7
Middle East	Israel	6

DHL & FedEx Shipment Charges Reference

Shipment charges(KG)	Reference DHL(USD\$)
0.00kg-1.00kg	USD\$60.00
1.00kg-2.00kg	USD\$70.00
2.00kg-3.00kg	USD\$80.00

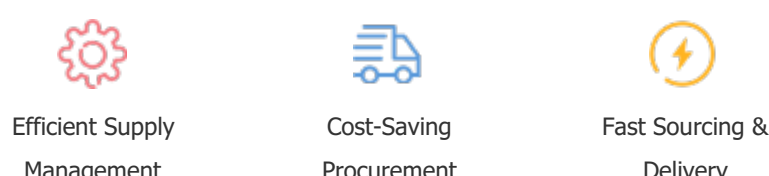
Note: The above table is for reference only. There may have some data bias for the uncontrollable factors.
Contact us if you have any questions.

Payment Support

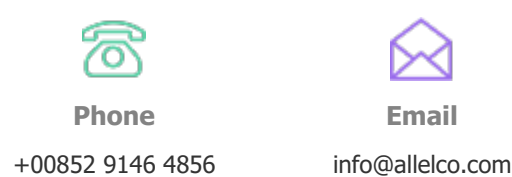
The payment method can be chosen from the methods shown below:
Wire Transfer (T/T, Bank Transfer), Western Union, Credit card,
PayPal.



Your Faithful Supply Chain Partner -



Contact us if you have any questions.



Certifications & Memberships



[View More](#)

