

Image may be representation.
See specifications for product details.

XCZU19EG-2FFVB1517I

Manufacturer Part Number	XCZU19EG-2FFVB1517I
Manufacturer	AMD Xilinx
Allelco Part Number	32D-XCZU19EG-2FFVB1517I
ECAD Model	Request Free CAD Models
Parts Description	IC SOC CORTEX-A53 1517FCBGA
Package	1517-BBGA, FCBGA
Data sheet	XCZU19EG-2FFVB1517I.pdf
RoHs Status	ROHS3 Compliant

Get a Quote



XCZU19EG-2FFVB1517I - AMD.New Original in Stock. Download Linear Technology XCZU19EG-2FFVB1517I datasheet/specifications on AllelcoElec.com.
Request a quote for XCZU19EG-2FFVB1517I, please send us email: info@allelco.com

Specifications

XCZU19EG-2FFVB1517I Tech Specifications
XCZU19EG-2FFVB1517I - AMD technical specifications, attributes, parameters

Product Attribute	Attribute Value	Product Attribute	Attribute Value
Manufacturer	AMD Xilinx	Package	Tray
Supplier Device Package	1517-FCBGA (40x40)	Operating Temperature	-40°C ~ 100°C (TJ)
Speed	533MHz, 600MHz, 1.3GHz	Number of I/O	644
Series	Zynq® UltraScale+™ MPSoC EG	Flash Size	-
RAM Size	256KB	Core Processor	Quad ARM® Cortex®-A53 MPCore™ with CoreSight™, Dual ARM®Cortex™-R5 with CoreSight™, ARM Mali™-400 MP2
Primary Attributes	Zynq®UltraScale+™ FPGA, 1143K+ Logic Cells	Connectivity	CANbus, EBI/EMI, Ethernet, I²C, MMC/SD/SDIO, SPI, UART/USART, USB OTG
Peripherals	DMA, WDT	Base Product Number	XCZU19
Package / Case	1517-BBGA, FCBGA	Architecture	MCU, FPGA

Parts with Similar Specifications

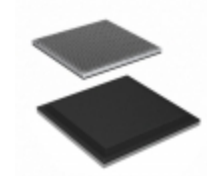
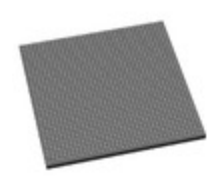
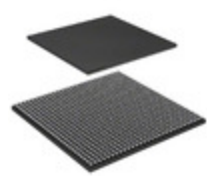
The three parts on the right have similar specifications to AMD XCZU19EG-2FFVB1517I

Product Attribute				
Part Number	XCZU19EG-2FFVB1517I	XCZU19EG-11FFVC1760I	XCZU27DR-1FFVE1156I	XCZU19EG-2FFVC1760I
Manufacturer	AMD	AMD	Xilinx	AMD
RAM Size	256KB	256KB	-	256KB
Core Processor	Quad ARM® Cortex®-A53 MPCore™ with CoreSight™, Dual ARM®Cortex™-R5 with CoreSight™, ARM Mali™-400 MP2	Quad ARM® Cortex®-A53 MPCore™ with CoreSight™, Dual ARM®Cortex™-R5 with CoreSight™, ARM Mali™-400 MP2	-	Quad ARM® Cortex®-A53 MPCore™ with CoreSight™, Dual ARM®Cortex™-R5 with CoreSight™, ARM Mali™-400 MP2
Operating Temperature	-40°C ~ 100°C (TJ)	-40°C ~ 100°C (TJ)	-	-40°C ~ 100°C (TJ)
Number of I/O	644	512	-	512
Connectivity	CANbus, EBI/EMI, Ethernet, I²C, MMC/SD/SDIO, SPI, UART/USART, USB OTG	CANbus, EBI/EMI, Ethernet, I²C, MMC/SD/SDIO, SPI, UART/USART, USB OTG	-	CANbus, EBI/EMI, Ethernet, I²C, MMC/SD/SDIO, SPI, UART/USART, USB OTG
Primary Attributes	Zynq®UltraScale+™ FPGA, 1143K+ Logic Cells	Zynq®UltraScale+™ FPGA, 1143K+ Logic Cells	-	Zynq®UltraScale+™ FPGA, 1143K+ Logic Cells
Peripherals	DMA, WDT	DMA, WDT	-	DMA, WDT
Series	Zynq® UltraScale+™ MPSoC EG	Zynq® UltraScale+™ MPSoC EG	*	Zynq® UltraScale+™ MPSoC EG
Supplier Device Package	1517-FCBGA (40x40)	1760-FCBGA (42.5x42.5)	-	1760-FCBGA (42.5x42.5)
Architecture	MCU, FPGA	MCU, FPGA	-	MCU, FPGA
Speed	533MHz, 600MHz, 1.3GHz	500MHz, 600MHz, 1.2GHz	-	533MHz, 600MHz, 1.3GHz
Package	Tray	Tray	-	Tray
Flash Size	-	-	-	-
Base Product Number	XCZU19	XCZU19	-	XCZU19
Package / Case	1517-BBGA, FCBGA	1760-BBGA, FCBGA	-	1760-BBGA, FCBGA

Customers Also Interested in

Recommended Products

XCZU19EG-11FFVC1760I	XCZU27DR-1FFVE1156I	XCZU19EG-2FFVC1760I	XCZU21DR-2FFVD1156E	XCZU15EG-2FFVB1156I	XCZU19EG-2FFVC1760E
AMD	Xilinx	AMD	Xilinx	AMD	AMD
IC SOC CORTEX-A53 1760FCBGA	XCZU27DR-1FFVE1156I	IC SOC CORTEX-A53 1760FCBGA	XCZU21DR-2FFVD1156E	IC SOC CORTEX-A53 1156FCBGA	IC SOC CORTEX-A53 1760FCBGA
XCZU15EG-11FFVB1156I	XCZU19EG-1FFVC1760I	XCZU11EG-3FFVC1760E	XCZU21DR-1FFVD1156I	XCZU15EG-1FFVB1156I	XCZU17EG-1FFVB1517E
AMD	AMD	AMD	Xilinx	AMD	AMD
IC SOC CORTEX-A53 1156FCBGA	IC SOC CORTEX-A53 1760FCBGA	IC SOC CORTEX-A53 1760FCBGA	XCZU21DR-1FFVD1156I	IC SOC CORTEX-A53 1156FCBGA	IC SOC CORTEX-A53 1517FCBGA



XCZU15EG-2FFVC900I

AMD
IC SOC CORTEX-A53 900FCBGA

XCZU19EG-1FFVB1517E

AMD
IC SOC CORTEX-A53 1517FCBGA

XCZU27DR-2FFVE1156E

Xilinx
XCZU27DR-2FFVE1156E

XCZU19EG-1FFVC1760E

AMD
IC SOC CORTEX-A53 1760FCBGA

XCZU15EG-2FFVB1156E

AMD
IC SOC CORTEX-A53 1156FCBGA

XCZU21DR-2FFVD1156I

AMD Xilinx

Shipment

Delivery Time

In-stock items can be shipped within 24 hours. Some parts will be arranged for delivery within 1-2 days from the date all items arrive at our warehouse. And Allelco ships order once a day at about 17:00, except Sunday. Once the goods are shipped, the estimated delivery time depends on the shipping methods and Delivery destination. The table below shows are the logistic time for some common countries.

Delivery Cost

> Use your express account for shipment if you have one.

> Use our account for the shipment. Refer to the table below for the approximate charges.

(Different time frame / countries / package size has different price.)

Delivery Method

> Global Common Shipment by DHL / UPS / FedEx / TNT / EMS / SF we support.

> Others more shipping ways, please get in touch with your customer manager.

Common Countries Logistic Time Reference

Region	Country	Logistic Time(Day)
America	United States	5
	Brazil	7
Europe	Germany	5
	United Kingdom	4
	Italy	5
Oceania	Australia	6
	New Zealand	7
Asia	India	6
	Japan	7
Middle East	Israel	6

DHL & FedEx Shipment Charges Reference

Shipment charges(KG)	Reference DHL(USD\$)
0.00kg-1.00kg	USD\$60.00
1.00kg-2.00kg	USD\$70.00
2.00kg-3.00kg	USD\$80.00

Note: The above table is for reference only. There may have some data bias for the uncontrollable factors. Contact us if you have any questions.

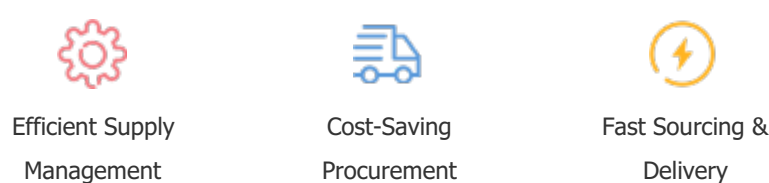
Payment Support

The payment method can be chosen from the methods shown below:

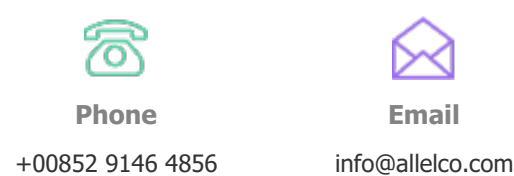
Wire Transfer (T/T, Bank Transfer), Western Union, Credit card, PayPal.



Your Faithful Supply Chain Partner -



Contact us if you have any questions.



Certifications & Memberships



[View More](#)



Contact us

Address: Flat/Rm C 13/F Harvard Commercial Building 105-111 Thomson Road, Wan Chai, Hong Kong

Phone: +00852 9146 4856

Fax: +00852 3010 8510

Email: info@Allelco.com

Copyright © 2012-2023 AllelcoElec.com. All rights reserved.