





HAT2099H-EL-E

Manufacturer Part Number	HAT2099H-EL-E
Manufacturer	Renesas Electronics Corporation
Allelco Part Number	32D-HAT2099H-EL-E
ECAD Model	 Request Free CAD Models
Parts Description	MOSFET N-CH 30V 50A LFPAK
Package	SC-100, SOT-669
Data sheet	HAT2099H-EL-E.pdf
RoHs Status	 ROHS3 Compliant



[Get a Quote](#)

HAT2099H-EL-E - Renesas Electronics America Inc. New Original in Stock. Download Linear Technology HAT2099H-EL-E datasheet/specifications on AllelcoElec.com.

Request a quote for HAT2099H-EL-E, please send us email: info@allelco.com

Specifications





HAT2099H-EL-E Tech Specifications

HAT2099H-EL-E - Renesas Electronics America Inc technical specifications, attributes, parameters

Product Attribute	Attribute Value	Product Attribute	Attribute Value
Manufacturer	Renesas Electronics Corporation	Operating Temperature	150°C (TJ)
Vgs(th) (Max) @ Id	-	Mounting Type	Surface Mount
Vgs (Max)	±20V	Input Capacitance (Ciss) (Max) @ Vds	4750 pF @ 10 V
Technology	MOSFET (Metal Oxide)	Gate Charge (Qg) (Max) @ Vgs	75 nC @ 10 V
Supplier Device Package	LFPAK	FET Type	N-Channel
Series	-	FET Feature	-
Rds On (Max) @ Id, Vgs	3.7mOhm @ 25A, 10V	Drive Voltage (Max Rds On, Min Rds On)	4.5V, 10V
Power Dissipation (Max)	30W (Tc)	Drain to Source Voltage (Vdss)	30 V
Package / Case	SC-100, SOT-669	Current - Continuous Drain (Id) @ 25°C	50A (Ta)
Package	Tape & Reel (TR)	Base Product Number	HAT2099

Parts with Similar Specifications

The three parts on the right have similar specifications to Renesas Electronics America Inc HAT2099H-EL-E

Product Attribute	 NO PICTURE			 NO PICTURE
Part Number	HAT2099H-EL-E	HAT2096H-EL-E	HAT2088R-EL-E	HAT2093R-EL
Manufacturer	Renesas Electronics America Inc	Renesas Electronics America Inc	Renesas Electronics America Inc	0
Current - Continuous Drain (Id) @ 25°C	50A (Ta)	40A (Ta)	2A (Ta)	-
Technology	MOSFET (Metal Oxide)	MOSFET (Metal Oxide)	MOSFET (Metal Oxide)	-
Vgs (Max)	±20V	±20V	±30V	-
Series	-	-	-	-
Rds On (Max) @ Id, Vgs	3.7mOhm @ 25A, 10V	5.3mOhm @ 20A, 10V	440mOhm @ 1A, 10V	-
Input Capacitance (Ciss) (Max) @ Vds	4750 pF @ 10 V	2200 pF @ 10 V	450 pF @ 25 V	-
Package / Case	SC-100, SOT-669	SC-100, SOT-669	8-SOIC (0.154", 3.90mm Width)	-
Gate Charge (Qg) (Max) @ Vgs	75 nC @ 10 V	40 nC @ 10 V	13 nC @ 10 V	-
Drive Voltage (Max Rds On, Min Rds On)	4.5V, 10V	4.5V, 10V	10V	-
Supplier Device Package	LFPAK	LFPAK	8-SOP	-
Base Product Number	HAT2099	HAT2096	HAT2088	-
Operating Temperature	150°C (TJ)	150°C (TJ)	150°C (TJ)	-
FET Type	N-Channel	N-Channel	N-Channel	-
Drain to Source Voltage (Vdss)	30 V	30 V	200 V	-
Power Dissipation (Max)	30W (Tc)	20W (Tc)	2.5W (Ta)	-
Mounting Type	Surface Mount	Surface Mount	Surface Mount	-
FET Feature	-	-	-	-
Vgs(th) (Max) @ Id	-	-	-	-
Package	Tape & Reel (TR)	Tape & Reel (TR)	Tape & Reel (TR)	-

HAT2099H-EL-E Datasheet PDF

Download HAT2099H-EL-E pdf datasheets and Renesas Electronics America Inc documentation for HAT2099H-EL-E - Renesas Electronics America Inc.

PCN Packaging

 Label Change-All Devices 01/Dec/2022.pdf

Customers Also Interested in

Recommended Products



HAT2093R-EL
0



HAT2114R
VBSEMI



HAT2099H-EL
Renesas Electronics Corporation



HAT2096H-EL-E
Renesas Electronics America Inc
MOSFET N-CH 30V 40A LPAK



HAT2093R
Renesas Electronics Corporation



HAT2099H02-EL-E
Renesas Electronics Corporation



HAT2099H02-EL
Renesas Electronics Corporation



HAT2092R
Renesas Electronics Corporation



HAT20AAJ
Renesas Electronics Corporation



HAT2114RJ
VBSEMI



HAT2088R-EL-E
Renesas Electronics America Inc
MOSFET N-CH 200V 2A 8SOP



HAT2092R-EL-E
Renesas Electronics America Inc
MOSFET 2N-CH 30V 11A 8-SOP



HAT2114R-EL-E
Renesas Electronics Corporation



HAT2097R
HITACHI



HAT2114R-EL
Renesas Electronics Corporation



HAT2093R-EL-E
Renesas Electronics Corporation



HAT2114RJ-EL-E
Renesas Electronics Corporation



HAT2103R-EL-E
Renesas Electronics Corporation

Shipment

Delivery Time

In-stock items can be shipped within 24 hours. Some parts will be arranged for delivery within 1-2 days from the date all items arrive at our warehouse. And Alleco ships order once a day at about 17:00, except Sunday. Once the goods are shipped, the estimated delivery time depends on the shipping methods and Delivery destination. The table below shows are the logistic time for some common countries.

Delivery Cost

- > Use your express account for shipment if you have one.
 - > Use our account for the shipment. Refer to the table below for the approximate charges.
- (Different time frame / countries / package size has different price.)

Delivery Method

- > Global Common Shipment by DHL / UPS / FedEx / TNT / EMS / SF we support.
- > Others more shipping ways, please get in touch with your customer manager.

Common Countries Logistic Time Reference		
Region	Country	Logistic Time(Day)
America	United States	5
	Brazil	7
Europe	Germany	5
	United Kingdom	4
	Italy	5
Oceania	Australia	6
	New Zealand	7
Asia	India	6
	Japan	7
Middle East	Israel	6

DHL & FedEx Shipment Charges Reference	
Shipment charges(KG)	Reference DHL(USD\$)
0.00kg-1.00kg	USD\$60.00
1.00kg-2.00kg	USD\$70.00
2.00kg-3.00kg	USD\$80.00

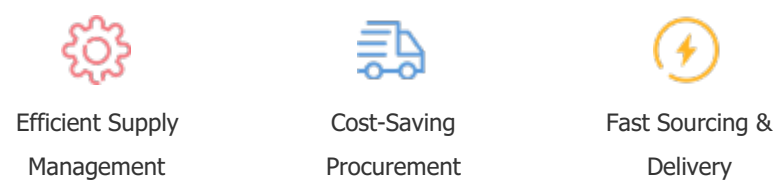
Note: The above table is for reference only. There may have some data bias for the uncontrollable factors.
Contact us if you have any questions.

Payment Support

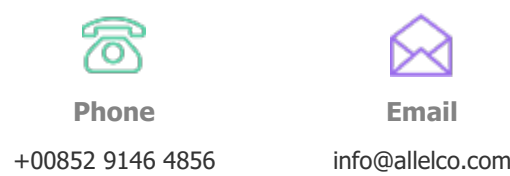
The payment method can be chosen from the methods shown below:
Wire Transfer (T/T, Bank Transfer), Western Union, Credit card, PayPal.



Your Faithful Supply Chain Partner -



Contact us if you have any questions.



Certifications & Memberships



[View More](#)