

Image may be representation.  
See specifications for product details.



## MJD2955T4G

Manufacturer Part Number	<b>MJD2955T4G</b>
Manufacturer	<b>onsemi</b>
Allelco Part Number	32D-MJD2955T4G
ECAD Model	PCB Footprint and Symbol
Parts Description	TRANS PNP 60V 10A DPAK
Package	TO-252-3, DPak (2 Leads + Tab), SC-63
Data sheet	<b>MJD2955, MJD3055.pdf</b>
RoHs Status	<b>ROHS3 Compliant</b>

**Get a Quote**

MJD2955T4G - onsemi.New Original in Stock. Download Linear Technology MJD2955T4G datasheet/specifications on AllelcoElec.com.  
Request a quote for MJD2955T4G, please send us email: [info@allelco.com](mailto:info@allelco.com)

### Specifications

MJD2955T4G Tech Specifications  
MJD2955T4G - onsemi technical specifications, attributes, parameters

Product Attribute	Attribute Value	Product Attribute	Attribute Value
Manufacturer	onsemi	Package	Tape & Reel (TR)
Voltage - Collector Emitter Breakdown (Max)	60 V	Operating Temperature	-55°C ~ 150°C (TJ)
Vce Saturation (Max) @ Ib, Ic	8V @ 3.3A, 10A	Mounting Type	Surface Mount
Transistor Type	PNP	Frequency - Transition	2MHz
Supplier Device Package	DPAK	DC Current Gain (hFE) (Min) @ Ic, Vce	20 @ 4A, 4V
Series	-	Current - Collector Cutoff (Max)	50µA
Power - Max	1.75 W	Current - Collector (Ic) (Max)	10 A
Package / Case	TO-252-3, DPak (2 Leads + Tab), SC-63	Base Product Number	MJD2955

### Parts with Similar Specifications

The three parts on the right have similar specifications to onsemi MJD2955T4G

Product Attribute				
Part Number	MJD2955T4G	MJD2955T4	MJD2955G	MJD3055T4
Manufacturer	onsemi	STMicroelectronics	onsemi	STMicroelectronics
Power - Max	1.75 W	20 W	1.75 W	20 W
Operating Temperature	-55°C ~ 150°C (TJ)	150°C (TJ)	-55°C ~ 150°C (TJ)	150°C (TJ)
DC Current Gain (hFE) (Min) @ Ic, Vce	20 @ 4A, 4V	20 @ 4A, 4V	20 @ 4A, 4V	20 @ 4A, 4V
Series	-	-	-	-
Transistor Type	PNP	PNP	PNP	NPN
Voltage - Collector Emitter Breakdown (Max)	60 V	60 V	60 V	60 V
Supplier Device Package	DPAK	DPAK	DPAK	DPAK
Package / Case	TO-252-3, DPak (2 Leads + Tab), SC-63	TO-252-3, DPak (2 Leads + Tab), SC-63	TO-252-3, DPak (2 Leads + Tab), SC-63	TO-252-3, DPak (2 Leads + Tab), SC-63
Current - Collector (Ic) (Max)	10 A	10 A	10 A	10 A
Vce Saturation (Max) @ Ib, Ic	8V @ 3.3A, 10A	8V @ 3.3A, 10A	8V @ 3.3A, 10A	8V @ 3.3A, 10A
Base Product Number	MJD2955	MJD295	MJD2955	MJD3055
Current - Collector Cutoff (Max)	50µA	50µA	50µA	50µA
Package	Tape & Reel (TR)	Tape & Reel (TR)	Tube	Tape & Reel (TR)
Mounting Type	Surface Mount	Surface Mount	Surface Mount	Surface Mount
Frequency - Transition	2MHz	2MHz	2MHz	2MHz

### MJD2955T4G Datasheet PDF

Download MJD2955T4G pdf datasheets and onsemi documentation for MJD2955T4G - onsemi.

#### Datasheets

[MJD2955, MJD3055.pdf](#)

#### Environmental Information

[onsemi REACH.pdf](#)

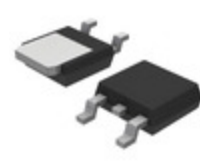
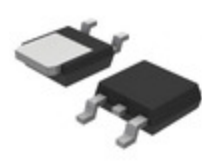
[onsemi RoHS.pdf](#)

#### PCN Assembly/Origin

[Assembly /Test Change 11/Apr/2023.pdf](#)

### Customers Also Interested in

#### Recommended Products



### MJD2955T4

STMicroelectronics  
TRANS PNP 60V 10A DPAK

### MJD3055 MOS

CJ

### MJD2955G

onsemi  
TRANS PNP 60V 10A DPAK

### MJD3055T4

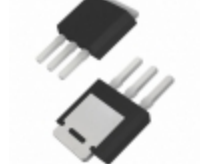
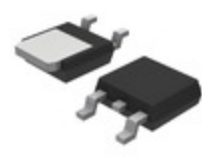
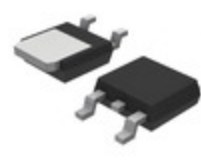
STMicroelectronics  
TRANS NPN 60V 10A DPAK

### MJD253T4G

onsemi  
TRANS PNP 100V 4A DPAK

### MJD2955

onsemi  
TRANS PNP 60V 10A DPAK



### MJD2955-T4

### MJD253T4

onsemi  
TRANS PWR PNP 4A 100V DPAK

### MJD3055T4

onsemi  
TRANS PWR NPN 10A 60V DPAK

### MJD29CTF

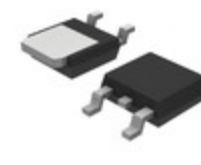
onsemi  
TRANS NPN 100V 1A DPAK

### MJD3055G

onsemi  
TRANS NPN 60V 10A DPAK

### MJD253-001

onsemi  
TRANS PNP 100V 4A IPAK



### MJD2955TF

onsemi  
TRANS PNP 60V 10A DPAK

### MJD2955 MOS

CJ

### MJD2955T4 MOS

STMicroelectronics

### MJD3055

onsemi  
TRANS NPN 60V 10A DPAK

### MJD2955T4

onsemi  
TRANS PWR PNP 10A 60V DPAK

### MJD2955T4G MOS

## Shipment

### Delivery Time

In-stock items can be shipped within 24 hours. Some parts will be arranged for delivery within 1-2 days from the date all items arrive at our warehouse. And Allelco ships order once a day at about 17:00, except Sunday. Once the goods are shipped, the estimated delivery time depends on the shipping methods and Delivery destination. The table below shows are the logistic time for some common countries.

### Delivery Cost

> Use your express account for shipment if you have one.

> Use our account for the shipment. Refer to the table below for the approximate charges.

(Different time frame / countries / package size has different price.)

### Delivery Method

> Global Common Shipment by DHL / UPS / FedEx / TNT / EMS / SF we support.

> Others more shipping ways, please get in touch with your customer manager.

Common Countries Logistic Time Reference		
Region	Country	Logistic Time(Day)
America	United States	5
	Brazil	7
Europe	Germany	5
	United Kingdom	4
	Italy	5
Oceania	Australia	6
	New Zealand	7
Asia	India	6
	Japan	7
Middle East	Israel	6

DHL & FedEx Shipment Charges Reference	
Shipment charges(KG)	Reference DHL(USD\$)
0.00kg-1.00kg	USD\$60.00
1.00kg-2.00kg	USD\$70.00
2.00kg-3.00kg	USD\$80.00

Note: The above table is for reference only. There may have some data bias for the uncontrollable factors.

Contact us if you have any questions.

## Payment Support

The payment method can be chosen from the methods shown below:  
Wire Transfer (T/T, Bank Transfer), Western Union, Credit card,  
PayPal.



## Your Faithful Supply Chain Partner -



Efficient Supply  
Management



Cost-Saving  
Procurement



Fast Sourcing &  
Delivery

Contact us if you have any questions.



Phone  
+00852 9146 4856



Email  
info@allelco.com

## Certifications & Memberships



View More