

Image may be representation.
See specifications for product details.



MAX5161NEZT

Manufacturer Part Number	MAX5161NEZT
Manufacturer	Maxim Integrated
Allelco Part Number	32D-MAX5161NEZT
ECAD Model	Request Free CAD Models
Parts Description	MAX5161 LOW-POWER DIGIPOT
Package	SOT-23-6 Thin, TSOT-23-6
Data sheet	MAX5161NEZT.pdf

Get a Quote

MAX5161NEZT - Analog Devices Inc./Maxim Integrated.New Original in Stock. Download Linear Technology MAX5161NEZT datasheet/specifications on AllelcoElec.com.
Request a quote for MAX5161NEZT, please send us email: info@allelco.com

Specifications

MAX5161NEZT Tech Specifications

MAX5161NEZT - Analog Devices Inc./Maxim Integrated technical specifications, attributes, parameters

Product Attribute	Attribute Value	Product Attribute	Attribute Value
Manufacturer	Maxim Integrated	Package	Bulk
Voltage - Supply	2.7V ~ 5.5V	Operating Temperature	-40°C ~ 85°C
Tolerance	±25%	Number of Taps	32
Temperature Coefficient (Typ)	50ppm/°C	Number of Circuits	1
Taper	Linear	Mounting Type	Surface Mount
Supplier Device Package	TSOT-23-6	Memory Type	Volatile
Series	-	Interface	Up/Down (U/D, INC, CS)
Resistance - Wiper (Ohms) (Typ)	400	Features	-
Resistance (Ohms)	200k	Configuration	Potentiometer
Package / Case	SOT-23-6 Thin, TSOT-23-6		

Parts with Similar Specifications

The three parts on the right have similar specifications to Analog Devices Inc./Maxim Integrated MAX5161NEZT

Product Attribute				
Part Number	MAX5161NEZT	MAX5161NEZT-T	MAX5161MEZT-T	MAX5161MEZT
Manufacturer	Analog Devices Inc./Maxim Integrated	Analog Devices Inc./Maxim Integrated	Analog Devices Inc./Maxim Integrated	Analog Devices Inc./Maxim Integrated
Tolerance	±25%	±25%	±25%	±25%
Number of Circuits	1	1	1	1
Voltage - Supply	2.7V ~ 5.5V	2.7V ~ 5.5V	2.7V ~ 5.5V	2.7V ~ 5.5V
Supplier Device Package	TSOT-23-6	TSOT-23-6	TSOT-23-6	TSOT-23-6
Series	-	-	-	-
Features	-	-	-	-
Taper	Linear	Linear	Linear	Linear
Memory Type	Volatile	Volatile	Volatile	Volatile
Package	Bulk	Bulk	Bulk	Bulk
Package / Case	SOT-23-6 Thin, TSOT-23-6	SOT-23-6 Thin, TSOT-23-6	SOT-23-6 Thin, TSOT-23-6	SOT-23-6 Thin, TSOT-23-6
Configuration	Potentiometer	Potentiometer	Potentiometer	Potentiometer
Resistance (Ohms)	200k	200k	100k	100k
Resistance - Wiper (Ohms) (Typ)	400	400	400	400
Interface	Up/Down (U/D, INC, CS)	Up/Down (U/D, INC, CS)	Up/Down (U/D, INC, CS)	Up/Down (U/D, INC, CS)
Temperature Coefficient (Typ)	50ppm/°C	50ppm/°C	50ppm/°C	50ppm/°C
Mounting Type	Surface Mount	Surface Mount	Surface Mount	Surface Mount
Operating Temperature	-40°C ~ 85°C	-40°C ~ 85°C	-40°C ~ 85°C	-40°C ~ 85°C
Number of Taps	32	32	32	32

Customers Also Interested in

Recommended Products



MAX5161NEZT-T

Analog Devices Inc./Maxim Integrated
MAX5161 LOW-POWER DIGIPOT



MAX516ACWG

Analog Devices Inc./Maxim Integrated
IC COMPARATOR 4 GEN PUR 2450IC



MAX5161MEZT-T

Analog Devices Inc./Maxim Integrated
MAX5161 LOW-POWER DIGIPOT



MAX5161MEZT

Analog Devices Inc./Maxim Integrated
MAX5161 LOW-POWER DIGIPOT



MAX5160NEUA+

Analog Devices Inc./Maxim Integrated
IC DGTL POT 200KOHM 32TAP 8UMAX



MAX516ACWG+

Analog Devices Inc./Maxim Integrated
IC COMPARATOR 4 GEN PUR 2450IC



MAX516BCNG	MAX5161LEZT	MAX516ACWG+T	MAX516BEWG	MAX5161NEZT+T	MAX5170AEEE+
Analog Devices Inc./Maxim Integrated IC COMPARATOR 4 GEN PUR 24DIP	Analog Devices Inc./Maxim Integrated MAX5161 LOW-POWER DIGIPOT	Analog Devices Inc./Maxim Integrated IC COMPARATOR 4 GEN PUR 24SOIC	Analog Devices Inc./Maxim Integrated IC COMPARATOR 4 GEN PUR 24SOIC	Analog Devices Inc./Maxim Integrated IC DGT POT 200KOHM 32TP TSOT23-6	Analog Devices Inc./Maxim Integrated IC DAC 14BIT V-OUT 16QSOP
					
MAX5160MEUA+T Analog Devices Inc./Maxim Integrated IC DGTL POT 100KOHM 32TAP 8UMAX	MAX5161LEZT+T Analog Devices Inc./Maxim Integrated IC DGT POT 50KOHM 32TAP TSOT23-6	MAX5160MEUA+ Analog Devices Inc./Maxim Integrated IC DGTL POT 100KOHM 32TAP 8UMAX	MAX5161MEZT+T Analog Devices Inc./Maxim Integrated IC DGT POT 100KOHM 32TP TSOT23-6	MAX516ACNG Analog Devices Inc./Maxim Integrated IC COMPARATOR 4 GEN PUR 24DIP	MAX516BCNG+ Analog Devices Inc./Maxim Integrated IC COMPARATOR 4 GEN PUR 24DIP

Shipment

Delivery Time

In-stock items can be shipped within 24 hours. Some parts will be arranged for delivery within 1-2 days from the date all items arrive at our warehouse. And Allelco ships order once a day at about 17:00, except Sunday. Once the goods are shipped, the estimated delivery time depends on the shipping methods and Delivery destination. The table below shows are the logistic time for some common countries.

Delivery Cost

> Use your express account for shipment if you have one.

> Use our account for the shipment. Refer to the table below for the approximate charges.

(Different time frame / countries / package size has different price.)

Delivery Method

> Global Common Shipment by DHL / UPS / FedEx / TNT / EMS / SF we support.

> Others more shipping ways, please get in touch with your customer manager.

Common Countries Logistic Time Reference		
Region	Country	Logistic Time(Day)
America	United States	5
	Brazil	7
Europe	Germany	5
	United Kingdom	4
	Italy	5
Oceania	Australia	6
	New Zealand	7
Asia	India	6
	Japan	7
Middle East	Israel	6

DHL & FedEx Shipment Charges Reference	
Shipment charges(KG)	Reference DHL(USD\$)
0.00kg-1.00kg	USD\$60.00
1.00kg-2.00kg	USD\$70.00
2.00kg-3.00kg	USD\$80.00

Note: The above table is for reference only. There may have some data bias for the uncontrollable factors.

Contact us if you have any questions.

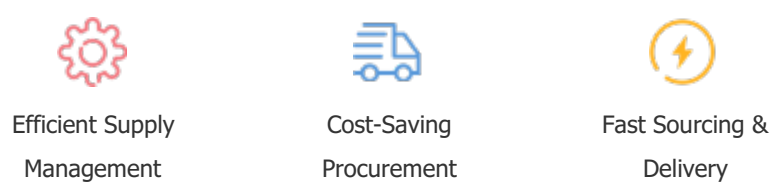
Payment Support

The payment method can be chosen from the methods shown below:

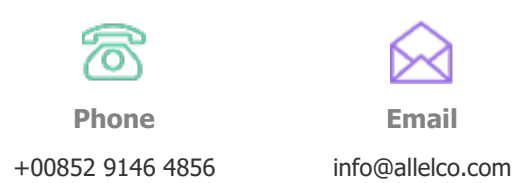
Wire Transfer (T/T, Bank Transfer), Western Union, Credit card, PayPal.



Your Faithful Supply Chain Partner -



Contact us if you have any questions.



Certifications & Memberships



[View More](#)