



Image may be representation.
See specifications for product details.



STW3N170

| | |
|--------------------------|----------------------------------|
| Manufacturer Part Number | STW3N170 |
| Manufacturer | STMicroelectronics |
| Allelco Part Number | 32D-STW3N170 |
| ECAD Model | PCB Symbol, Footprint & 3D Model |
| Parts Description | MOSFET N-CH 1700V 2.6A TO247-3 |
| Package | TO-247-3 |
| Data sheet | STW3N170, STWA3N170.pdf |
| RoHs Status | ROHS3 Compliant |

Get a Quote

STW3N170 - STMicroelectronics.New Original in Stock. Download Linear Technology STW3N170 datasheet/specifications on AllelcoElec.com.
Request a quote for STW3N170, please send us email: info@allelco.com

Specifications

STW3N170 Tech Specifications

STW3N170 - STMicroelectronics technical specifications, attributes, parameters

| Product Attribute | Attribute Value | Product Attribute | Attribute Value |
|-------------------------|----------------------|--|--------------------|
| Manufacturer | STMicroelectronics | Operating Temperature | -55°C ~ 150°C (TJ) |
| Vgs(th) (Max) @ Id | 5V @ 250µA | Mounting Type | Through Hole |
| Vgs (Max) | ±30V | Input Capacitance (Ciss) (Max) @ Vds | 1100 pF @ 100 V |
| Technology | MOSFET (Metal Oxide) | Gate Charge (Qg) (Max) @ Vgs | 44 nC @ 10 V |
| Supplier Device Package | TO-247-3 | FET Type | N-Channel |
| Series | PowerMESH™ | FET Feature | - |
| Rds On (Max) @ Id, Vgs | 130hm @ 1.3A, 10V | Drive Voltage (Max Rds On, Min Rds On) | 10V |
| Power Dissipation (Max) | 160mW | Drain to Source Voltage (Vdss) | 1700 V |
| Package / Case | TO-247-3 | Current - Continuous Drain (Id) @ 25°C | 2.6A (Tc) |
| Package | Tube | Base Product Number | STW3N170 |

Parts with Similar Specifications

The three parts on the right have similar specifications to STMicroelectronics STW3N170

| Product Attribute | | | | |
|--|----------------------|----------------------|----------------------|----------------------|
| Part Number | STW3N170 | STW40N60M2 | STW38NB20 | STW40N65M2 |
| Manufacturer | STMicroelectronics | STMicroelectronics | STMicroelectronics | STMicroelectronics |
| Base Product Number | STW3N170 | STW40 | STW38N | STW40 |
| Vgs (Max) | ±30V | ±25V | ±30V | ±25V |
| FET Feature | - | - | - | - |
| Drive Voltage (Max Rds On, Min Rds On) | 10V | 10V | 10V | 10V |
| Operating Temperature | -55°C ~ 150°C (TJ) | -55°C ~ 150°C (TJ) | 150°C (TJ) | 150°C (TJ) |
| Mounting Type | Through Hole | Through Hole | Through Hole | Through Hole |
| Package / Case | TO-247-3 | TO-247-3 | TO-247-3 | TO-247-3 |
| FET Type | N-Channel | N-Channel | N-Channel | N-Channel |
| Power Dissipation (Max) | 160mW | 250W (Tc) | 180W (Tc) | 250W (Tc) |
| Package | Tube | Tube | Tube | Tube |
| Supplier Device Package | TO-247-3 | TO-247-3 | TO-247-3 | TO-247-3 |
| Current - Continuous Drain (Id) @ 25°C | 2.6A (Tc) | 34A (Tc) | 38A (Tc) | 32A (Tc) |
| Technology | MOSFET (Metal Oxide) | MOSFET (Metal Oxide) | MOSFET (Metal Oxide) | MOSFET (Metal Oxide) |
| Drain to Source Voltage (Vdss) | 1700 V | 600 V | 200 V | 650 V |
| Series | PowerMESH™ | MDmesh™ II Plus | PowerMESH™ | MDmesh™ M2 |
| Rds On (Max) @ Id, Vgs | 130hm @ 1.3A, 10V | 88mOhm @ 17A, 10V | 65mOhm @ 19A, 10V | 99mOhm @ 16A, 10V |
| Vgs(th) (Max) @ Id | 5V @ 250µA | 4V @ 250µA | 5V @ 250µA | 4V @ 250µA |
| Input Capacitance (Ciss) (Max) @ Vds | 1100 pF @ 100 V | 2500 pF @ 100 V | 3800 pF @ 25 V | 2355 pF @ 100 V |
| Gate Charge (Qg) (Max) @ Vgs | 44 nC @ 10 V | 57 nC @ 10 V | 95 nC @ 10 V | 56.5 nC @ 10 V |

STW3N170 Datasheet PDF

Download STW3N170 pdf datasheets and STMicroelectronics documentation for STW3N170 - STMicroelectronics.

Datasheets

STW3N170, STWA3N170.pdf

PCN Design/Specification

Mult Dev Adv Material Notice 8/Apr/2019.pdf

PCN Assembly/Origin

Customers Also Interested in

Recommended Products



STW40N60M2
STMicroelectronics
MOSFET N-CH 600V 34A TO247



STW4000BAHT
STMicroelectronics



STW38NB20
STMicroelectronics
MOSFET N-CH 200V 38A TO247-3



STW40N65M2
STMicroelectronics
MOSFET N-CH 650V 32A TO247



STW36NM60ND
STMicroelectronics
MOSFET N-CH 600V 29A TO247



STW36N55M5
STMicroelectronics
MOSFET N-CH 550V 33A TO247



STW36N65M5
STMicroelectronics



STW40N20 CMH82N25 MOS
STMicroelectronics



STW40N20
STMicroelectronics
MOSFET N-CH 200V 40A TO247-3



STW36N60M6
STMicroelectronics
MOSFET N-CHANNEL 600V 30A TO247



STW38N65M5 MOS
STMicroelectronics



STW35N65M5
STMicroelectronics
MOSFET N-CH 650V 27A TO247-3



STW38N65M5
STMicroelectronics
MOSFET N-CH 650V 30A TO247



STW40N90K5
STMicroelectronics
MOSFET N-CH 900V 40A TO247



STW40N95DK5
STMicroelectronics
MOSFET N-CHANNEL 950V 38A TO247



STW3N150
STMicroelectronics
MOSFET N-CH 1500V 2.5A TO247-3



STW40N60M2 MOS
STMicroelectronics



STW37N60DM2AG
STMicroelectronics
MOSFET N-CH 600V 28A TO247

Shipment

Delivery Time

In-stock items can be shipped within 24 hours. Some parts will be arranged for delivery within 1-2 days from the date all items arrive at our warehouse. And Allelco ships order once a day at about 17:00, except Sunday. Once the goods are shipped, the estimated delivery time depends on the shipping methods and Delivery destination. The table below shows are the logistic time for some common countries.

Delivery Cost

- > Use your express account for shipment if you have one.
 - > Use our account for the shipment. Refer to the table below for the approximate charges.
- (Different time frame / countries / package size has different price.)

Delivery Method

- > Global Common Shipment by DHL / UPS / FedEx / TNT / EMS / SF we support.
- > Others more shipping ways, please get in touch with your customer manager.

| Common Countries Logistic Time Reference | | |
|--|----------------|--------------------|
| Region | Country | Logistic Time(Day) |
| America | United States | 5 |
| | Brazil | 7 |
| Europe | Germany | 5 |
| | United Kingdom | 4 |
| | Italy | 5 |
| Oceania | Australia | 6 |
| | New Zealand | 7 |
| Asia | India | 6 |
| | Japan | 7 |
| Middle East | Israel | 6 |

| DHL & FedEx Shipment Charges Reference | |
|--|----------------------|
| Shipment charges(KG) | Reference DHL(USD\$) |
| 0.00kg-1.00kg | USD\$60.00 |
| 1.00kg-2.00kg | USD\$70.00 |
| 2.00kg-3.00kg | USD\$80.00 |

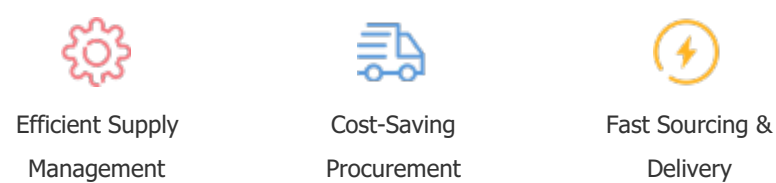
Note: The above table is for reference only. There may have some data bias for the uncontrollable factors. Contact us if you have any questions.

Payment Support

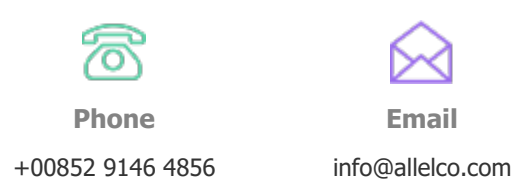
The payment method can be chosen from the methods shown below:
Wire Transfer (T/T, Bank Transfer), Western Union, Credit card, PayPal.



Your Faithful Supply Chain Partner -



Contact us if you have any questions.



Certifications & Memberships



[View More](#)

Contact us

Address: Flat/Rm C 13/F Harvard Commercial Building 105-111 Thomson Road, Wan Chai, Hong Kong
Phone: +00852 9146 4856
Fax: +00852 3010 8510
Email: info@allelco.com