



Image may be representation.
See specifications for product details.



ADG1221BRMZ

Manufacturer Part Number	ADG1221BRMZ
Manufacturer	Analog Devices, Inc.
Allelco Part Number	32D-ADG1221BRMZ
ECAD Model	PCB Symbol, Footprint & 3D Model
Parts Description	IC SW SPST-NOX2 200OHM 10MSOP
Package	10-TFSOP, 10-MSOP (0.118", 3.00mm Width)
Data sheet	ADG1221-23.pdf
RoHs Status	ROHS3 Compliant

Get a Quote

ADG1221BRMZ - Analog Devices Inc..New Original in Stock. Download Linear Technology ADG1221BRMZ datasheet/specifications on AllelcoElec.com.
Request a quote for ADG1221BRMZ, please send us email: info@allelco.com

Specifications

ADG1221BRMZ Tech Specifications

ADG1221BRMZ - Analog Devices Inc. technical specifications, attributes, parameters

Product Attribute	Attribute Value	Product Attribute	Attribute Value
Manufacturer	Analog Devices, Inc.	Number of Circuits	2
Voltage - Supply, Single (V+)	5V ~ 16.5V	Multiplexer/Demultiplexer Circuit	1:1
Voltage - Supply, Dual (V±)	±5V ~ 16.5V	Mounting Type	Surface Mount
Switch Time (Ton, Toff) (Max)	130ns, 105ns	Current - Leakage (IS(off)) (Max)	100pA
Switch Circuit	SPST - NO	Crosstalk	-90dB @ 1MHz
Supplier Device Package	10-MSOP	Charge Injection	0.1pC
Series	-	Channel-to-Channel Matching (ΔRon)	2.50hm
Package / Case	10-TFSOP, 10-MSOP (0.118", 3.00mm Width)	Channel Capacitance (CS(off), CD(off))	2.2pF, 2.2pF
Package	Tube	Base Product Number	ADG1221
Operating Temperature	-40°C ~ 125°C (TA)	-3db Bandwidth	960MHz
On-State Resistance (Max)	2000hm		

Parts with Similar Specifications

The three parts on the right have similar specifications to Analog Devices Inc. ADG1221BRMZ

Product Attribute				
Part Number	ADG1221BRMZ	ADG1213YCPZ-500RL7	ADG1221BRMZ-REEL7	ADG1223BRMZ
Manufacturer	Analog Devices Inc.	Analog Devices Inc.	Analog Devices Inc.	Analog Devices Inc.
-3db Bandwidth	960MHz	1GHz	960MHz	960MHz
Supplier Device Package	10-MSOP	16-LFCSP (3x3)	10-MSOP	10-MSOP
Number of Circuits	2	4	2	2
Crosstalk	-90dB @ 1MHz	-90dB @ 1MHz	-90dB @ 1MHz	-90dB @ 1MHz
Package	Tube	Tape & Reel (TR)	Tape & Reel (TR)	Tube
Current - Leakage (IS(off)) (Max)	100pA	100pA	100pA	100pA
Operating Temperature	-40°C ~ 125°C (TA)	-40°C ~ 125°C (TA)	-40°C ~ 125°C (TA)	-40°C ~ 125°C (TA)
Base Product Number	ADG1221	ADG1213	ADG1221	ADG1223
On-State Resistance (Max)	2000hm	1900hm	2000hm	2000hm
Channel Capacitance (CS(off), CD(off))	2.2pF, 2.2pF	1.1pF, 1.2pF	2.2pF, 2.2pF	2.2pF, 2.2pF
Channel-to-Channel Matching (ΔRon)	2.50hm	2.50hm	2.50hm	2.50hm
Mounting Type	Surface Mount	Surface Mount	Surface Mount	Surface Mount
Charge Injection	0.1pC	-0.3pC	0.1pC	0.1pC
Switch Circuit	SPST - NO	SPST - NO/NC	SPST - NO	SPST - NO/NC
Multiplexer/Demultiplexer Circuit	1:1	1:1	1:1	1:1
Package / Case	10-TFSOP, 10-MSOP (0.118", 3.00mm Width)	16-WFQFN Exposed Pad, CSP	10-TFSOP, 10-MSOP (0.118", 3.00mm Width)	10-TFSOP, 10-MSOP (0.118", 3.00mm Width)
Voltage - Supply, Single (V+)	5V ~ 16.5V	5V ~ 16.5V	5V ~ 16.5V	5V ~ 16.5V
Series	-	-	-	-
Switch Time (Ton, Toff) (Max)	130ns, 105ns	130ns, 115ns	130ns, 105ns	130ns, 105ns
Voltage - Supply, Dual (V±)	±5V ~ 16.5V	±4.5V ~ 16.5V	±5V ~ 16.5V	±5V ~ 16.5V

ADG1221BRMZ Datasheet PDF

Download ADG1221BRMZ pdf datasheets and Analog Devices Inc. documentation for ADG1221BRMZ - Analog Devices Inc..

Datasheets

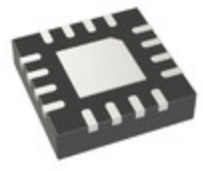
ADG1221-23.pdf

PCN Assembly/Origin

Assembly Site Chg 26/Jan/2016.pdf

Customers Also Interested in

Recommended Products



ADG1213YCPZ-500RL7

Analog Devices Inc.
IC SW SPST-NO/NCX4 190OHM
16CSP



ADG1221BRMZ-REEL7

Analog Devices Inc.
IC SW SPST-NOX2 200OHM 10MSOP



ADG1223BRMZ

Analog Devices Inc.
IC SW SPST-NO/NCX2 200OHM
10MSOP



ADG1233YRUZ-REEL7

Analog Devices Inc.
IC SWITCH SPDTX3 190OHM
16TSSOP



ADG1212YRUZ-REEL

Analog Devices Inc.
IC SW SPST-NOX4 190OHM 16TSSOP



ADG1233YRUZ

Analog Devices Inc.
IC SWITCH SPDTX3 190OHM
16TSSOP



ADG1213YRUZ

Analog Devices Inc.
IC SW SPST-NO/NC 190OHM
16TSSOP



ADG1213YRUZ-REEL7

Analog Devices Inc.
IC SW SPST-NO/NC 190OHM
16TSSOP



ADG1213YCPZ

ADI (Analog Devices, Inc.)



ADG1219BRJ-REEL7

ADI (Analog Devices, Inc.)



ADG1212YRUZ

Analog Devices Inc.
IC SW SPST-NOX4 190OHM 16TSSOP



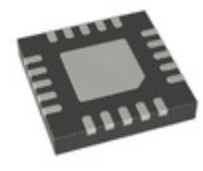
ADG1212YRUZ-REEL7

Analog Devices Inc.
IC SW SPST-NOX4 190OHM 16TSSOP



ADG1219BRJZ

ADI (Analog Devices, Inc.)



ADG1234YCPZ-REEL

Analog Devices Inc.
IC SWITCH SPDTX4 190OHM
20LFCSP



ADG1219BRJZ-REEL7

Analog Devices Inc.
IC SWITCH SPDTX1 200OHM SOT23-
8



ADG1223BRMZ-REEL7

Analog Devices Inc.
IC SW SPST-NO/NCX2 200OHM
10MSOP



ADG1222BRMZ-REEL7

Analog Devices Inc.
IC SW SPST-NCX2 200OHM 10MSOP



ADG1222BRMZ

Analog Devices Inc.
IC SW SPST-NCX2 200OHM 10MSOP

Shipment

Delivery Time

In-stock items can be shipped within 24 hours. Some parts will be arranged for delivery within 1-2 days from the date all items arrive at our warehouse. And Allelco ships order once a day at about 17:00, except Sunday. Once the goods are shipped, the estimated delivery time depends on the shipping methods and Delivery destination. The table below shows are the logistic time for some common countries.

Delivery Cost

- > Use your express account for shipment if you have one.
 - > Use our account for the shipment. Refer to the table below for the approximate charges.
- (Different time frame / countries / package size has different price.)

Delivery Method

- > Global Common Shipment by DHL / UPS / FedEx / TNT / EMS / SF we support.
- > Others more shipping ways, please get in touch with your customer manager.

Common Countries Logistic Time Reference

Region	Country	Logistic Time(Day)
America	United States	5
	Brazil	7
Europe	Germany	5
	United Kingdom	4
	Italy	5
Oceania	Australia	6
	New Zealand	7
Asia	India	6
	Japan	7
Middle East	Israel	6

DHL & FedEx Shipment Charges Reference

Shipment charges(KG)	Reference DHL(USD\$)
0.00kg-1.00kg	USD\$60.00
1.00kg-2.00kg	USD\$70.00
2.00kg-3.00kg	USD\$80.00

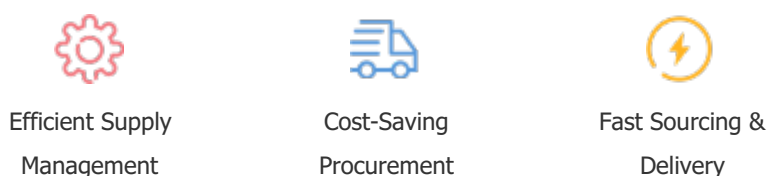
Note: The above table is for reference only. There may have some data bias for the uncontrollable factors.
Contact us if you have any questions.

Payment Support

The payment method can be chosen from the methods shown below:
Wire Transfer (T/T, Bank Transfer), Western Union, Credit card,
PayPal.



Your Faithful Supply Chain Partner -



Contact us if you have any questions.



Certifications & Memberships



View More

Contact us

Address: Flat/Rm C 13/F Harvard Commercial Building 105-111 Thomson Road, Wan Chai, Hong Kong
Phone: +00852 9146 4856
Fax: +00852 3010 8510
Email: info@allelco.com