



Image may be representation.  
See specifications for product details.



## MAX1673ESA+

|                          |                               |
|--------------------------|-------------------------------|
| Manufacturer Part Number | <b>MAX1673ESA+</b>            |
| Manufacturer             | <b>Maxim Integrated</b>       |
| Allelco Part Number      | 32D-MAX1673ESA+               |
| ECAD Model               | Request Free CAD Models       |
| Parts Description        | IC REG CHARGE PUMP ADJ 8SOIC  |
| Package                  | 8-SOIC (0.154", 3.90mm Width) |
| Data sheet               | <b>MAX1673.pdf</b>            |
| RoHs Status              | <b>ROHS3 Compliant</b>        |

**Get a Quote**

MAX1673ESA+ - Analog Devices Inc./Maxim Integrated.New Original in Stock. Download Linear Technology MAX1673ESA+ datasheet/specifications on AllelcoElec.com. Request a quote for MAX1673ESA+, please send us email: [info@allelco.com](mailto:info@allelco.com)

### Specifications

MAX1673ESA+ Tech Specifications  
MAX1673ESA+ - Analog Devices Inc./Maxim Integrated technical specifications, attributes, parameters

| Product Attribute            | Attribute Value               | Product Attribute     | Attribute Value   |
|------------------------------|-------------------------------|-----------------------|-------------------|
| Manufacturer                 | Maxim Integrated              | Package               | Tube              |
| Voltage - Output (Min/Fixed) | -1.5V                         | Output Type           | Adjustable        |
| Voltage - Output (Max)       | -5.5V                         | Output Configuration  | Negative          |
| Voltage - Input (Min)        | 2V                            | Operating Temperature | -40°C ~ 85°C (TA) |
| Voltage - Input (Max)        | 5.5V                          | Number of Outputs     | 1                 |
| Topology                     | Charge Pump                   | Mounting Type         | Surface Mount     |
| Synchronous Rectifier        | No                            | Function              | Step-Down         |
| Supplier Device Package      | 8-SOIC                        | Frequency - Switching | 350kHz            |
| Series                       | -                             | Current - Output      | 125mA             |
| Package / Case               | 8-SOIC (0.154", 3.90mm Width) | Base Product Number   | MAX1673           |

### Parts with Similar Specifications

The three parts on the right have similar specifications to Analog Devices Inc./Maxim Integrated MAX1673ESA+

| Product Attribute            |                                      |  |                                      |  |
|------------------------------|--------------------------------------|--|--------------------------------------|--|
| Part Number                  | MAX1673ESA+                          | MAX1674EUA-T                           | MAX1672EEE+T                         | MAX1675EUA                             |
| Manufacturer                 | Analog Devices Inc./Maxim Integrated | Analog Devices Inc./Maxim Integrated   | Analog Devices Inc./Maxim Integrated | Analog Devices Inc./Maxim Integrated   |
| Frequency - Switching        | 350kHz                               | Up to 500Hz                            | -                                    | Up to 500Hz                            |
| Voltage - Input (Max)        | 5.5V                                 | 5.5V                                   | 11V                                  | 5.5V                                   |
| Synchronous Rectifier        | No                                   | Yes                                    | No                                   | Yes                                    |
| Mounting Type                | Surface Mount                        | Surface Mount                          | Surface Mount                        | Surface Mount                          |
| Package / Case               | 8-SOIC (0.154", 3.90mm Width)        | 8-TSSOP, 8-MSOP (0.118", 3.00mm Width) | 16-SSOP (0.154", 3.90mm Width)       | 8-TSSOP, 8-MSOP (0.118', 3.00mm Width) |
| Current - Output             | 125mA                                | 750mA (Switch)                         | 300mA                                | 360mA (Switch)                         |
| Voltage - Output (Min/Fixed) | -1.5V                                | 2V (3.3V, 5V)                          | 1.25V (3.3V, 5.5V)                   | 2V (3.3V, 5V)                          |
| Package                      | Tube                                 | Tape & Reel (TR)                       | Tape & Reel (TR)                     | Tube                                   |
| Topology                     | Charge Pump                          | Boost                                  | Buck, Boost                          | Boost                                  |
| Number of Outputs            | 1                                    | 1                                      | 1                                    | 1                                      |
| Base Product Number          | MAX1673                              | MAX1674                                | MAX1672                              | MAX1675                                |
| Voltage - Input (Min)        | 2V                                   | 0.7V                                   | 1.8V                                 | 0.7V                                   |
| Function                     | Step-Down                            | Step-Up                                | Step-Up/Step-Down                    | Step-Up                                |
| Output Configuration         | Negative                             | Positive                               | Positive                             | Positive                               |
| Voltage - Output (Max)       | -5.5V                                | 5.5V                                   | 5.5V                                 | 5.5V                                   |
| Supplier Device Package      | 8-SOIC                               | 8-uMAX/uSOP                            | 16-QSOP                              | 8-uMAX/uSOP                            |
| Output Type                  | Adjustable                           | Adjustable (Programmable)              | Adjustable (Programmable)            | Adjustable (Programmable)              |
| Operating Temperature        | -40°C ~ 85°C (TA)                    | -40°C ~ 85°C (TA)                      | -40°C ~ 85°C (TA)                    | -40°C ~ 85°C (TA)                      |
| Series                       | -                                    | -                                      | -                                    | -                                      |

### MAX1673ESA+ Datasheet PDF

Download MAX1673ESA+ pdf datasheets and Analog Devices Inc./Maxim Integrated documentation for MAX1673ESA+ - Analog Devices Inc./Maxim Integrated.

#### Datasheets

[MAX1673.pdf](#)

#### Environmental Information

[Maxim Integrated RoHS Cert.pdf](#)

[Material Declaration MAX1673ESA+.pdf](#)

#### Part Numbering Guide

## Application Notes

## Customers Also Interested in

### Recommended Products



#### MAX1674EUA-T

Analog Devices Inc./Maxim Integrated  
IC REG BST ADJ/PROG 750MA 8UMAX



#### MAX1672EEE+T

Analog Devices Inc./Maxim Integrated  
IC REG BUCK BST ADJ/PROG 16QSOP



#### MAX1675EUA

Analog Devices Inc./Maxim Integrated  
IC REG BST ADJ/PROG 360MA 8UMAX



#### MAX1675EUA-T

Analog Devices Inc./Maxim Integrated  
IC REG BST ADJ/PROG 360MA 8UMAX



#### MAX1673ESA

Analog Devices Inc./Maxim Integrated  
IC REG CHARGE PUMP ADJ 8SOIC



#### MAX1676EUB

Analog Devices Inc./Maxim Integrated  
IC REG BOOST ADJ/PROG 10UMAX



#### MAX1672EEE

Analog Devices Inc./Maxim Integrated  
IC REG BUCK BST ADJ/PROG 16QSOP



#### MAX1672EEE-T

Analog Devices Inc./Maxim Integrated  
IC REG BUCK BST ADJ/PROG 16QSOP



#### MAX1674EUA+T

Analog Devices Inc./Maxim Integrated  
IC REG BST ADJ/PROG 750MA 8UMAX



#### MAX1675EUA+T

Analog Devices Inc./Maxim Integrated  
IC REG BST ADJ/PROG 360MA 8UMAX



#### MAX1674EUA

Analog Devices Inc./Maxim Integrated  
IC REG BST ADJ/PROG 750MA 8UMAX



#### MAX1669EEE

Analog Devices Inc./Maxim Integrated  
IC FAN CTRLR W/SENSOR 16-QSOP



#### MAX1673ESA+T

Analog Devices Inc./Maxim Integrated  
IC REG CHARGE PUMP ADJ 8SOIC



#### MAX1669EEE+

Analog Devices Inc./Maxim Integrated  
IC FAN CTRLR W/SENSOR 16-QSOP



#### MAX1674EUA+

Analog Devices Inc./Maxim Integrated  
IC REG BST ADJ/PROG 750MA 8UMAX



#### MAX1669EEE+T

Analog Devices Inc./Maxim Integrated  
FAN CONTROLLER AND REMOTE TEMPER



#### MAX166BCPP

Analog Devices Inc./Maxim Integrated  
IC ADC 8BIT SAR 20DIP



#### MAX1675EUA+

Analog Devices Inc./Maxim Integrated  
IC REG BST ADJ/PROG 360MA 8UMAX

## Shipment

### Delivery Time

In-stock items can be shipped within 24 hours. Some parts will be arranged for delivery within 1-2 days from the date all items arrive at our warehouse. And Allelco ships order once a day at about 17:00, except Sunday. Once the goods are shipped, the estimated delivery time depends on the shipping methods and Delivery destination. The table below shows are the logistic time for some common countries.

### Delivery Cost

- > Use your express account for shipment if you have one.
  - > Use our account for the shipment. Refer to the table below for the approximate charges.
- (Different time frame / countries / package size has different price.)

### Delivery Method

- > Global Common Shipment by DHL / UPS / FedEx / TNT / EMS / SF we support.
- > Others more shipping ways, please get in touch with your customer manager.

Common Countries Logistic Time Reference

| Region      | Country        | Logistic Time(Day) |
|-------------|----------------|--------------------|
| America     | United States  | 5                  |
|             | Brazil         | 7                  |
| Europe      | Germany        | 5                  |
|             | United Kingdom | 4                  |
|             | Italy          | 5                  |
| Oceania     | Australia      | 6                  |
|             | New Zealand    | 7                  |
| Asia        | India          | 6                  |
|             | Japan          | 7                  |
| Middle East | Israel         | 6                  |

DHL & FedEx Shipment Charges Reference

| Shipment charges(KG) | Reference DHL(USD\$) |
|----------------------|----------------------|
| 0.00kg-1.00kg        | USD\$60.00           |
| 1.00kg-2.00kg        | USD\$70.00           |
| 2.00kg-3.00kg        | USD\$80.00           |

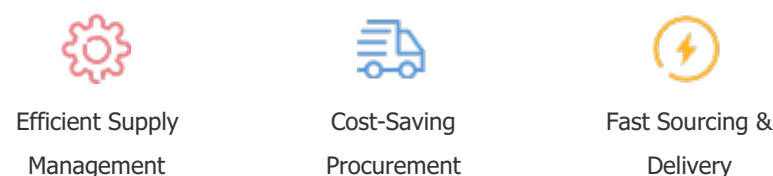
Note: The above table is for reference only. There may have some data bias for the uncontrollable factors. Contact us if you have any questions.

### Payment Support

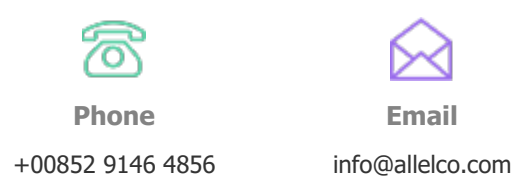
The payment method can be chosen from the methods shown below:  
Wire Transfer (T/T, Bank Transfer), Western Union, Credit card, PayPal.



### Your Faithful Supply Chain Partner -



Contact us if you have any questions.



### Certifications & Memberships



View More