

Image may be representation.
See specifications for product details.

ECH8690-TL-H

Manufacturer Part Number	ECH8690-TL-H
Manufacturer	onsemi
Allelco Part Number	32D-ECH8690-TL-H
ECAD Model	PCB Symbol, Footprint & 3D Model
Parts Description	MOSFET N/P-CH 60V ECH8
Package	8-SMD, Flat Lead
Data sheet	ECH8690.pdf
RoHs Status	ROHS3 Compliant

Get a Quote



ECH8690-TL-H - onsemi.New Original in Stock. Download Linear Technology ECH8690-TL-H datasheet/specifications on AllelcoElec.com.
Request a quote for ECH8690-TL-H, please send us email: info@allelco.com

Specifications

ECH8690-TL-H Tech Specifications

ECH8690-TL-H - onsemi technical specifications, attributes, parameters

Product Attribute	Attribute Value	Product Attribute	Attribute Value
Manufacturer	onsemi	Operating Temperature	150°C (TJ)
Vgs(th) (Max) @ Id	-	Mounting Type	Surface Mount
Technology	MOSFET (Metal Oxide)	Input Capacitance (Ciss) (Max) @ Vds	955pF @ 20V
Supplier Device Package	8-ECH	Gate Charge (Qg) (Max) @ Vgs	18nC @ 10V
Series	-	FET Feature	Logic Level Gate, 4V Drive
Rds On (Max) @ Id, Vgs	55mOhm @ 2A, 10V	Drain to Source Voltage (Vdss)	60V
Power - Max	1.5W	Current - Continuous Drain (Id) @ 25°C	4.7A, 3.5A
Package / Case	8-SMD, Flat Lead	Configuration	N and P-Channel
Package	Tape & Reel (TR)	Base Product Number	ECH8690

Parts with Similar Specifications

The three parts on the right have similar specifications to onsemi ECH8690-TL-H

Product Attribute				
Part Number	ECH8690-TL-H	ECH8667-TL-H	ECH8693R-TL-W	ECH8668-TL-H
Manufacturer	onsemi	onsemi	onsemi	onsemi
Power - Max	1.5W	1.5W	1.4W	1.5W
Current - Continuous Drain (Id) @ 25°C	4.7A, 3.5A	5.5A	14A	7.5A, 5A
Vgs(th) (Max) @ Id	-	-	-	-
Configuration	N and P-Channel	2 P-Channel (Dual)	2 N-Channel (Dual) Common Drain	N and P-Channel
Drain to Source Voltage (Vdss)	60V	30V	24V	20V
Mounting Type	Surface Mount	Surface Mount	Surface Mount	Surface Mount
Base Product Number	ECH8690	ECH8667	ECH8693	ECH8668
Operating Temperature	150°C (TJ)	150°C (TJ)	150°C (TJ)	150°C (TJ)
Input Capacitance (Ciss) (Max) @ Vds	955pF @ 20V	600pF @ 10V	-	1060pF @ 10V
FET Feature	Logic Level Gate, 4V Drive	Logic Level Gate	Logic Level Gate, 2.5V Drive	Logic Level Gate
Supplier Device Package	8-ECH	8-ECH	SOT-28FL/ECH8	8-ECH
Package	Tape & Reel (TR)	Tape & Reel (TR)	Tape & Reel (TR)	Tape & Reel (TR)
Gate Charge (Qg) (Max) @ Vgs	18nC @ 10V	13nC @ 10V	13nC @ 4.5V	10.8nC @ 4.5V
Series	-	-	-	-
Rds On (Max) @ Id, Vgs	55mOhm @ 2A, 10V	39mOhm @ 2.5A, 10V	7mOhm @ 5A, 4.5V	17mOhm @ 4A, 4.5V
Technology	MOSFET (Metal Oxide)	MOSFET (Metal Oxide)	MOSFET (Metal Oxide)	MOSFET (Metal Oxide)
Package / Case	8-SMD, Flat Lead	8-SMD, Flat Lead	8-SMD, Flat Lead	8-SMD, Flat Lead

ECH8690-TL-H Datasheet PDF

Download ECH8690-TL-H pdf datasheets and onsemi documentation for ECH8690-TL-H - onsemi.

Datasheets

[ECH8690.pdf](#)

Environmental Information

[onsemi RoHS.pdf](#)

Customers Also Interested in


Recommended Products



ECH8667-TL-H
onsemi
MOSFET 2P-CH 30V 5.5A 8ECH



ECH8693R-TL-W
onsemi
MOSFET 2N-CH 24V 14A SOT28



ECH8692R-TL-W
AMI Semiconductor/onsemi




ECH8692R
AMI Semiconductor/onsemi




ECH8668-TL-H
onsemi
MOSFET N/P-CH 20V 7.5A/5A ECH8



ECH8672
AMI Semiconductor/onsemi



ECH8674-TL-H
Sanyo
P-CHANNEL MOSFET



ECH8695R-TL-W
onsemi
MOSFET 2N-CH 24V 11A SOT28



ECH8663R-TL
AMI Semiconductor/onsemi



ECH8672 MOS
AMI Semiconductor/onsemi



ECH8693R-TL
AMI Semiconductor/onsemi




ECH8663R-TL-H
onsemi
MOSFET 2N-CH 30V 8A 8ECH



ECH8664R-TL-H
onsemi
MOSFET 2N-CH 30V 7A ECH8



ECH8666-P-TL-H
AMI Semiconductor/onsemi



ECH8694R-W
AMI Semiconductor/onsemi



ECH8697R-TL-W
onsemi
MOSFET 2N-CH 24V 10A SOT28




ECH8661-TL-H
onsemi
MOSFET N/P-CH 30V 7A/5.5A ECH8



ECH8692R-TL
AMI Semiconductor/onsemi

Shipment

Delivery Time

In-stock items can be shipped within 24 hours. Some parts will be arranged for delivery within 1-2 days from the date all items arrive at our warehouse. And Allelco ships order once a day at about 17:00, except Sunday. Once the goods are shipped, the estimated delivery time depends on the shipping methods and Delivery destination. The table below shows are the logistic time for some common countries.

Delivery Cost

- > Use your express account for shipment if you have one.
 - > Use our account for the shipment. Refer to the table below for the approximate charges.
- (Different time frame / countries / package size has different price.)

Delivery Method

- > Global Common Shipment by DHL / UPS / FedEx / TNT / EMS / SF we support.
- > Others more shipping ways, please get in touch with your customer manager.

Common Countries Logistic Time Reference		
Region	Country	Logistic Time(Day)
America	United States	5
	Brazil	7
Europe	Germany	5
	United Kingdom	4
	Italy	5
Oceania	Australia	6
	New Zealand	7
Asia	India	6
	Japan	7
Middle East	Israel	6

DHL & FedEx Shipment Charges Reference	
Shipment charges(KG)	Reference DHL(USD\$)
0.00kg-1.00kg	USD\$60.00
1.00kg-2.00kg	USD\$70.00
2.00kg-3.00kg	USD\$80.00

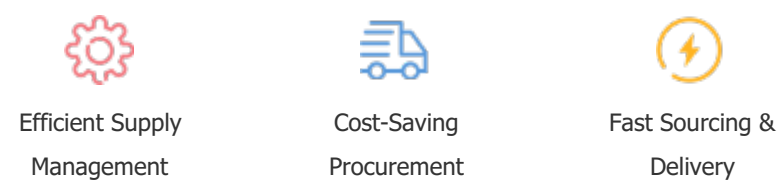
Note: The above table is for reference only. There may have some data bias for the uncontrollable factors.
Contact us if you have any questions.

Payment Support

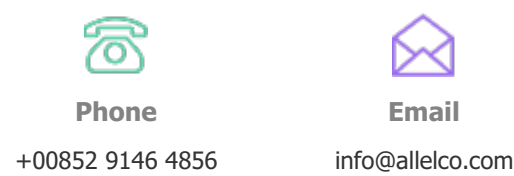
The payment method can be chosen from the methods shown below:
Wire Transfer (T/T, Bank Transfer), Western Union, Credit card, PayPal.



Your Faithful Supply Chain Partner -



Contact us if you have any questions.



Certifications & Memberships



[View More](#)