

Image may be representation.  
See specifications for product details.



## DS1678S+

Manufacturer Part Number	<b>DS1678S+</b>
Manufacturer	<b>Maxim Integrated</b>
Allelco Part Number	32D-DS1678S+
ECAD Model	Request Free CAD Models
Parts Description	IC RTC TIME EVENT REC I2C 8SOIC
Package	8-SOIC (0.209", 5.30mm Width)
Data sheet	<b>DS1678.pdf</b>
RoHs Status	<b>ROHS3 Compliant</b>

**Get a Quote**

DS1678S+ - Analog Devices Inc./Maxim Integrated. New Original in Stock. Download Linear Technology DS1678S+ datasheet/specifications on AllelcoElec.com.  
Request a quote for DS1678S+, please send us email: [info@allelco.com](mailto:info@allelco.com)

## Specifications

DS1678S+ Tech Specifications

DS1678S+ - Analog Devices Inc./Maxim Integrated technical specifications, attributes, parameters

Product Attribute	Attribute Value	Product Attribute	Attribute Value
Manufacturer	Maxim Integrated	Operating Temperature	-40°C ~ 85°C
Voltage - Supply, Battery	2.6V ~ 3.5V	Mounting Type	Surface Mount
Voltage - Supply	4.5V ~ 5.5V	Memory Size	32B
Type	Time Event Recorder	Interface	I <sup>2</sup> C, 2-Wire Serial
Time Format	HH:MM:SS (12/24 hr)	Features	Alarm, Leap Year, NVSRAM, Y2K
Supplier Device Package	8-SOIC	Date Format	YY-MM-DD-dd
Series	-	Current - Timekeeping (Max)	-
Package / Case	8-SOIC (0.209", 5.30mm Width)	Base Product Number	DS1678
Package	Tube		

## Parts with Similar Specifications

The three parts on the right have similar specifications to Analog Devices Inc./Maxim Integrated DS1678S+

Product Attribute				
Part Number	DS1678S+	DS1673S-5	DS1682S	DS1682S+T&R
Manufacturer	Analog Devices Inc./Maxim Integrated	Analog Devices Inc./Maxim Integrated	Analog Devices Inc./Maxim Integrated	Analog Devices Inc./Maxim Integrated
Time Format	HH:MM:SS (12/24 hr)	HH:MM:SS (12/24 hr)	Binary	Binary
Mounting Type	Surface Mount	Surface Mount	Surface Mount	Surface Mount
Date Format	YY-MM-DD-dd	YY-MM-DD-dd	Binary	Binary
Voltage - Supply	4.5V ~ 5.5V	4.5V ~ 5.5V	2.5V ~ 5.5V	2.5V ~ 5.5V
Series	-	-	-	-
Features	Alarm, Leap Year, NVSRAM, Y2K	Alarm, Leap Year, Watchdog Timer	Alarm, EEPROM	Alarm, EEPROM
Memory Size	32B	-	10B	10B
Supplier Device Package	8-SOIC	20-SOIC	8-SOIC	8-SOIC
Type	Time Event Recorder	Portable System Controller	Elapsed Time Counter	Elapsed Time Counter
Interface	I <sup>2</sup> C, 2-Wire Serial	3-Wire Serial	I <sup>2</sup> C, 2-Wire Serial	I <sup>2</sup> C, 2-Wire Serial
Operating Temperature	-40°C ~ 85°C	0°C ~ 70°C	-40°C ~ 85°C	-40°C ~ 85°C
Package	Tube	Tube	Tube	Tape & Reel (TR)
Base Product Number	DS1678	DS1673	DS1682	DS1682
Voltage - Supply, Battery	2.6V ~ 3.5V	2.5V ~ 3.7V	-	-
Current - Timekeeping (Max)	-	300µA @ 5V	4µA ~ 15µA @ 3V ~ 5.5V	4µA ~ 15µA @ 3V ~ 5.5V
Package / Case	8-SOIC (0.209", 5.30mm Width)	20-SOIC (0.295", 7.50mm Width)	8-SOIC (0.154", 3.90mm Width)	8-SOIC (0.154", 3.90mm Width)

## DS1678S+ Datasheet PDF

Download DS1678S+ pdf datasheets and Analog Devices Inc./Maxim Integrated documentation for DS1678S+ - Analog Devices Inc./Maxim Integrated.

### Datasheets

[DS1678.pdf](#)

### Environmental Information

[Maxim Integrated RoHS Cert.pdf](#)

[Material Declaration DS1678S+.pdf](#)

### Application Notes

[Oscillator Design Considerations for Low-Current A.pdf](#)

[Selecting a Backup Source for Real-Time Clocks.pdf](#)

[State Machine Logic in Binary-Coded Decimal \(BCD\)-.pdf](#)

[How to Use the DS1678 Real-Time Event Recorder.pdf](#)

### Other Related Documents



## Customers Also Interested in

### Recommended Products



#### DS1673S-5

Analog Devices Inc./Maxim Integrated  
IC RTC SYST CTRLR SER 20SOIC



#### DS1682

Analog Devices / Maxim Integrated



#### DS1682S/TR

Analog Devices / Maxim Integrated



#### DS1682S

Analog Devices Inc./Maxim Integrated  
IC RTC ELAPSED CNT I2C 8SOIC



#### DS1682S+T&R

Analog Devices Inc./Maxim Integrated  
IC RTC ELAPSED CNT I2C 8SOIC



#### DS1679B

DS



#### DS1673E-5+

Analog Devices Inc./Maxim Integrated  
IC RTC SYST CTRLR SER 20TSSOP



#### DS1672U-33+T&R

Analog Devices Inc./Maxim Integrated  
IC RTC BINARY COUNTER I2C 8UMAX



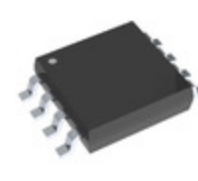
#### DS1678S+T&R

Analog Devices Inc./Maxim Integrated  
IC RTC TIME EVENT REC I2C 8SOIC



#### DS1672U-33+T&R

Analog Devices / Maxim Integrated



#### DS1678S

Analog Devices Inc./Maxim Integrated  
IC RTC TIME EVENT REC I2C 8SOIC



#### DS1673E-3+

Analog Devices Inc./Maxim Integrated  
IC RTC SYST CTRLR SER 20TSSOP



#### DS1677-5

DLADES



#### DS1673S-3

Analog Devices Inc./Maxim Integrated  
IC RTC SYST CTRLR SER 20SOIC



#### DS1682S+T&R

Analog Devices / Maxim Integrated



#### DS1674

DALLAS



#### DS1673-3

Analog Devices / Maxim Integrated



#### DS1682S+

Analog Devices Inc./Maxim Integrated  
IC RTC ELAPSED CNT I2C 8SOIC

## Shipment

### Delivery Time

In-stock items can be shipped within 24 hours. Some parts will be arranged for delivery within 1-2 days from the date all items arrive at our warehouse. And Allelco ships order once a day at about 17:00, except Sunday. Once the goods are shipped, the estimated delivery time depends on the shipping methods and Delivery destination. The table below shows are the logistic time for some common countries.

### Delivery Cost

> Use your express account for shipment if you have one.

> Use our account for the shipment. Refer to the table below for the approximate charges.

(Different time frame / countries / package size has different price.)

### Delivery Method

> Global Common Shipment by DHL / UPS / FedEx / TNT / EMS / SF we support.

> Others more shipping ways, please get in touch with your customer manager.

Common Countries Logistic Time Reference

Region	Country	Logistic Time(Day)
America	United States	5
	Brazil	7
Europe	Germany	5
	United Kingdom	4
	Italy	5
Oceania	Australia	6
	New Zealand	7
Asia	India	6
	Japan	7
Middle East	Israel	6

DHL & FedEx Shipment Charges Reference

Shipment charges(KG)	Reference DHL(USD\$)
0.00kg-1.00kg	USD\$60.00
1.00kg-2.00kg	USD\$70.00
2.00kg-3.00kg	USD\$80.00

Note: The above table is for reference only. There may have some data bias for the uncontrollable factors. Contact us if you have any questions.

### Payment Support

The payment method can be chosen from the methods shown below:

Wire Transfer (T/T, Bank Transfer), Western Union, Credit card, PayPal.



### Your Faithful Supply Chain Partner -



Efficient Supply Management



Cost-Saving Procurement



Fast Sourcing & Delivery

Contact us if you have any questions.



Phone

+00852 9146 4856



Email

info@allelco.com

### Certifications & Memberships



View More