

Image may be representation.
See specifications for product details.



DS1232LP+

| | |
|--------------------------|----------------------------------|
| Manufacturer Part Number | DS1232LP+ |
| Manufacturer | Maxim Integrated |
| Allelco Part Number | 32D-DS1232LP+ |
| ECAD Model | PCB Symbol, Footprint & 3D Model |
| Parts Description | IC SUPERVISOR 1 CHANNEL 8DIP |
| Package | 8-DIP (0.300", 7.62mm) |
| Data sheet | DS1232LP(S).pdf |
| RoHs Status | ROHS3 Compliant |

Get a Quote

DS1232LP+ - Analog Devices Inc./Maxim Integrated.New Original in Stock. Download Linear Technology DS1232LP+ datasheet/specifications on AllelcoElec.com. Request a quote for DS1232LP+, please send us email: info@allelco.com

Specifications

DS1232LP+ Tech Specifications
DS1232LP+ - Analog Devices Inc./Maxim Integrated technical specifications, attributes, parameters

| Product Attribute | Attribute Value | Product Attribute | Attribute Value |
|-------------------------|-----------------------------|------------------------------|------------------------|
| Manufacturer | Maxim Integrated | Package / Case | 8-DIP (0.300", 7.62mm) |
| Voltage - Threshold | 4.37V, 4.62V | Package | Tube |
| Type | Simple Reset/Power-On Reset | Output | Open Drain, Push-Pull |
| Supplier Device Package | 8-PDIP | Operating Temperature | 0°C ~ 70°C (TA) |
| Series | MicroMonitor™ | Number of Voltages Monitored | 1 |
| Reset Timeout | Adjustable/Selectable | Mounting Type | Through Hole |
| Reset | Active High/Active Low | Base Product Number | DS1232LP |

Parts with Similar Specifications

The three parts on the right have similar specifications to Analog Devices Inc./Maxim Integrated DS1232LP+

| Product Attribute | | | | |
|------------------------------|--------------------------------------|--------------------------------------|--------------------------------------|--------------------------------------|
| Part Number | DS1232LP+ | DS1232 | DS1232LPN | DS1232+ |
| Manufacturer | Analog Devices Inc./Maxim Integrated | Analog Devices Inc./Maxim Integrated | Analog Devices Inc./Maxim Integrated | Analog Devices Inc./Maxim Integrated |
| Operating Temperature | 0°C ~ 70°C (TA) | 0°C ~ 70°C (TA) | -40°C ~ 85°C (TA) | 0°C ~ 70°C (TA) |
| Package / Case | 8-DIP (0.300", 7.62mm) | 8-DIP (0.300", 7.62mm) | 8-DIP (0.300", 7.62mm) | 8-DIP (0.300", 7.62mm) |
| Type | Simple Reset/Power-On Reset | Simple Reset/Power-On Reset | Simple Reset/Power-On Reset | Simple Reset/Power-On Reset |
| Number of Voltages Monitored | 1 | 1 | 1 | 1 |
| Voltage - Threshold | 4.37V, 4.62V | 4.37V, 4.62V | 4.37V, 4.62V | 4.37V, 4.62V |
| Supplier Device Package | 8-PDIP | 8-PDIP | 8-PDIP | 8-PDIP |
| Output | Open Drain, Push-Pull | Open Drain, Push-Pull | Open Drain, Push-Pull | Open Drain, Push-Pull |
| Base Product Number | DS1232LP | DS1232 | DS1232LP | DS1232 |
| Mounting Type | Through Hole | Through Hole | Through Hole | Through Hole |
| Package | Tube | Tube | Tube | Tube |
| Reset Timeout | Adjustable/Selectable | Adjustable/Selectable | Adjustable/Selectable | Adjustable/Selectable |
| Reset | Active High/Active Low | Active High/Active Low | Active High/Active Low | Active High/Active Low |
| Series | MicroMonitor™ | MicroMonitor™ | MicroMonitor™ | MicroMonitor™ |

DS1232LP+ Datasheet PDF

Download DS1232LP+ pdf datasheets and Analog Devices Inc./Maxim Integrated documentation for DS1232LP+ - Analog Devices Inc./Maxim Integrated.

Datasheets

[DS1232LP\(S\).pdf](#)

Environmental Information

[Maxim Integrated REACH.pdf](#)

[Maxim Integrated RoHS Cert.pdf](#)

[Material Declaration DS1232LP+.pdf](#)

Customers Also Interested in

Recommended Products

| | | | | | |
|--------------------------------------|------------------------|--------------------------|--------------------------------------|--------------------|--------------------------------------|
| | | | | | |
| DS1232 | DS1232AATA-75-E | DS1232LPS+T&R | DS1232LPN | DS1232LPS+T | DS1232+ |
| Analog Devices Inc./Maxim Integrated | DA | DALLAS | Analog Devices Inc./Maxim Integrated | MAXIM/DS | Analog Devices Inc./Maxim Integrated |
| IC SUPERVISOR 1 CHANNEL 8DIP | | | IC SUPERVISOR 1 CHANNEL 8DIP | | IC SUPERVISOR 1 CHANNEL 8DIP |

**DS1232LPS-2+T&R**

DS

**DS1232L**

DALLAS

**DS1232LPS-2+T&R**Analog Devices Inc./Maxim Integrated
IC SUPERVISOR 1 CHANNEL 8SOIC**DS1232LPS-2+T**

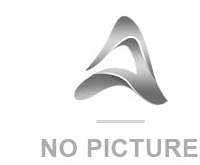
Analog Devices / Maxim Integrated

**DS1232L+**

Analog Devices / Maxim Integrated

**DS1232LPS-2**Analog Devices Inc./Maxim Integrated
IC SUPERVISOR 1 CHANNEL 8SOIC**DS1232LN**

DALLAS

**DS1232LPN+**Analog Devices Inc./Maxim Integrated
IC SUPERVISOR 1 CHANNEL 8DIP**DS1232LPS**Analog Devices Inc./Maxim Integrated
IC SUPERVISOR 1 CHANNEL 16SOIC**DS1232LP**Analog Devices Inc./Maxim Integrated
IC SUPERVISOR 1 CHANNEL 8DIP**DS1232D**

HTC

**DS1232LPS-2+**Analog Devices Inc./Maxim Integrated
IC SUPERVISOR 1 CHANNEL 8SOIC

Shipment

Delivery Time

In-stock items can be shipped within 24 hours. Some parts will be arranged for delivery within 1-2 days from the date all items arrive at our warehouse. And Allelco ships order once a day at about 17:00, except Sunday. Once the goods are shipped, the estimated delivery time depends on the shipping methods and Delivery destination. The table below shows are the logistic time for some common countries.

Delivery Cost

> Use your express account for shipment if you have one.

> Use our account for the shipment. Refer to the table below for the approximate charges.

(Different time frame / countries / package size has different price.)

Delivery Method

> Global Common Shipment by DHL / UPS / FedEx / TNT / EMS / SF we support.

> Others more shipping ways, please get in touch with your customer manager.

Common Countries Logistic Time Reference

| Region | Country | Logistic Time(Day) |
|-------------|----------------|--------------------|
| America | United States | 5 |
| | Brazil | 7 |
| Europe | Germany | 5 |
| | United Kingdom | 4 |
| | Italy | 5 |
| Oceania | Australia | 6 |
| | New Zealand | 7 |
| Asia | India | 6 |
| | Japan | 7 |
| Middle East | Israel | 6 |

DHL & FedEx Shipment Charges Reference

| Shipment charges(KG) | Reference DHL(USD\$) |
|----------------------|----------------------|
| 0.00kg-1.00kg | USD\$60.00 |
| 1.00kg-2.00kg | USD\$70.00 |
| 2.00kg-3.00kg | USD\$80.00 |

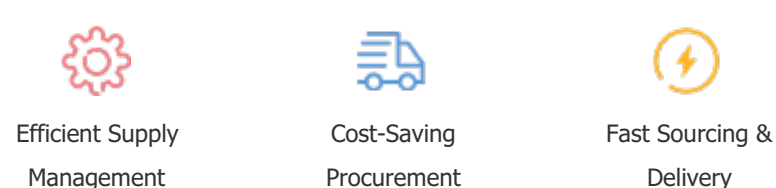
Note: The above table is for reference only. There may have some data bias for the uncontrollable factors.
Contact us if you have any questions.

Payment Support

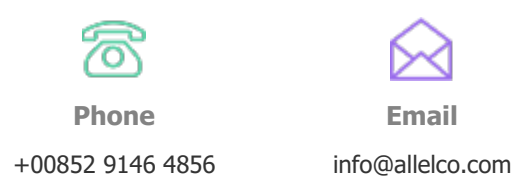
The payment method can be chosen from the methods shown below:
Wire Transfer (T/T, Bank Transfer), Western Union, Credit card, PayPal.



Your Faithful Supply Chain Partner -



Contact us if you have any questions.



Certifications & Memberships



[View More](#)



Contact us

Address: Flat/Rm C 13/F Harvard Commercial Building 105-111 Thomson Road, Wan Chai, Hong Kong

Phone: +00852 9146 4856

Fax: +00852 3010 8510

Email: info@Allelco.com

Copyright © 2012-2023 AllelcoElec.com. All rights reserved.