



Image may be representation.
See specifications for product details.



ADG707BRUZ-REEL7

Manufacturer Part Number	ADG707BRUZ-REEL7
Manufacturer	Analog Devices, Inc.
Allelco Part Number	32D-ADG707BRUZ-REEL7
ECAD Model	PCB Symbol, Footprint & 3D Mode
Parts Description	IC MUX DUAL 8:1 4.5OHM 28TSSOP
Package	28-TSSOP (0.173', 4.40mm Width)
Data sheet	Cylindrical Battery Holders.pdf
RoHs Status	ROHS3 Compliant

Get a Quote

ADG707BRUZ-REEL7 - Analog Devices Inc..New Original in Stock. Download Linear Technology ADG707BRUZ-REEL7 datasheet/specifications on AllelcoElec.com.
Request a quote for ADG707BRUZ-REEL7, please send us email: info@allelco.com

Specifications

ADG707BRUZ-REEL7 Tech Specifications
ADG707BRUZ-REEL7 - Analog Devices Inc. technical specifications, attributes, parameters

Product Attribute	Attribute Value	Product Attribute	Attribute Value
Manufacturer	Analog Devices, Inc.	Number of Circuits	2
Voltage - Supply, Single (V+)	1.8V ~ 5.5V	Multiplexer/Demultiplexer Circuit	8:1
Voltage - Supply, Dual (V±)	±2.5V	Mounting Type	Surface Mount
Switch Time (Ton, Toff) (Max)	32ns, 16ns (Typ)	Current - Leakage (IS(off)) (Max)	100pA
Switch Circuit	-	Crosstalk	-80dB @ 1MHz
Supplier Device Package	28-TSSOP	Charge Injection	8pC
Series	-	Channel-to-Channel Matching (ΔRon)	-
Package / Case	28-TSSOP (0.173', 4.40mm Width)	Channel Capacitance (CS(off), CD(off))	13pF, 90pF
Package	Tape & Reel (TR)	Base Product Number	ADG707
Operating Temperature	-40°C ~ 85°C (TA)	-3db Bandwidth	36MHz
On-State Resistance (Max)	4.50hm		

Parts with Similar Specifications

The three parts on the right have similar specifications to Analog Devices Inc. ADG707BRUZ-REEL7

Product Attribute				
Part Number	ADG707BRUZ-REEL7	ADG706BRUZ-REEL	ADG708BRUZ-REEL	ADG708BRUZ-REEL7
Manufacturer	Analog Devices Inc.	Analog Devices Inc.	Analog Devices Inc.	Analog Devices Inc.
Voltage - Supply, Dual (V±)	±2.5V	±2.5V	±2.5V	±2.5V
Charge Injection	8pC	8pC	3pC	3pC
Crosstalk	-80dB @ 1MHz	-80dB @ 1MHz	-80dB @ 1MHz	-80dB @ 1MHz
Switch Time (Ton, Toff) (Max)	32ns, 16ns (Typ)	32ns, 16ns (Typ)	14ns, 8ns (Typ)	14ns, 8ns (Typ)
Channel-to-Channel Matching (ΔRon)	-	-	400mOhm	400mOhm
Number of Circuits	2	1	1	1
Operating Temperature	-40°C ~ 85°C (TA)	-40°C ~ 85°C (TA)	-40°C ~ 125°C (TA)	-40°C ~ 125°C (TA)
Series	-	-	-	-
Channel Capacitance (CS(off), CD(off))	13pF, 90pF	13pF, 180pF	13pF, 85pF	13pF, 85pF
Package	Tape & Reel (TR)	Tape & Reel (TR)	Tape & Reel (TR)	Tape & Reel (TR)
Base Product Number	ADG707	ADG706	ADG708	ADG708
Multiplexer/Demultiplexer Circuit	8:1	16:1	8:1	8:1
On-State Resistance (Max)	4.50hm	4.50hm	4.50hm	4.50hm
Voltage - Supply, Single (V+)	1.8V ~ 5.5V	1.8V ~ 5.5V	1.8V ~ 5.5V	1.8V ~ 5.5V
Package / Case	28-TSSOP (0.173', 4.40mm Width)	28-TSSOP (0.173', 4.40mm Width)	16-TSSOP (0.173', 4.40mm Width)	16-TSSOP (0.173", 4.40mm Width)
Switch Circuit	-	-	-	-
Mounting Type	Surface Mount	Surface Mount	Surface Mount	Surface Mount
-3db Bandwidth	36MHz	25MHz	55MHz	55MHz
Supplier Device Package	28-TSSOP	28-TSSOP	16-TSSOP	16-TSSOP
Current - Leakage (IS(off)) (Max)	100pA	100pA	10pA (Typ)	10pA (Typ)

ADG707BRUZ-REEL7 Datasheet PDF

Download ADG707BRUZ-REEL7 pdf datasheets and Analog Devices Inc. documentation for ADG707BRUZ-REEL7 - Analog Devices Inc..

Datasheets

[Cylindrical Battery Holders.pdf](#)

Other Related Documents

[Tape and Reel Packaging.pdf](#)

Customers Also Interested in

Recommended Products



ADG706BRUZ-REEL

Analog Devices Inc.
IC MUX 16:1 4.5OHM 28TSSOP



ADG708BRUZ-REEL

Analog Devices Inc.
IC MUX 8:1 4.5OHM 16TSSOP



ADG708BRUZ-REEL7

Analog Devices Inc.
IC MUX 8:1 4.5OHM 16TSSOP



ADG706BRU

Analog Devices Inc.
IC MUX 16:1 4.5OHM 28TSSOP



ADG708BRU

Analog Devices Inc.
IC MUX 8:1 4.5OHM 16TSSOP



ADG704BRMZ-REEL

Analog Devices Inc.
IC SWITCH SP4T X 1 40HM 10MSOP



ADG706BRU-REEL7

Analog Devices Inc.
IC MUX 16:1 4.5OHM 28TSSOP



ADG708CRUZ

Analog Devices Inc.
IC MUX 8:1 4.5OHM 16TSSOP



ADG704BRMZ-REEL7

Analog Devices Inc.
IC SWITCH SP4T X 1 40HM 10MSOP



ADG708CRUZ-REEL

Analog Devices Inc.
IC MUX 8:1 4.5OHM 16TSSOP



ADG706BRUZ

Analog Devices Inc.
IC MUX 16:1 4.5OHM 28TSSOP



ADG708CRU

Analog Devices Inc.
IC MUX 8:1 4.5OHM 16TSSOP



ADG706BRUZ-REEL7

Analog Devices Inc.
IC MUX 16:1 4.5OHM 28TSSOP



ADG708BRUZ

Analog Devices Inc.
IC MUX 8:1 4.5OHM 16TSSOP



ADG707BRUZ

Analog Devices Inc.
IC MUX DUAL 8:1 4.5OHM 28TSSOP



ADG709BRU

Analog Devices Inc.
IC SWITCH SP4TX2 4.5OHM 16TSSOP



ADG707BRU

Analog Devices Inc.
IC MUX DUAL 8:1 4.5OHM 28TSSOP



ADG708CRU-REEL7

Analog Devices Inc.
IC MUX 8:1 4.5OHM 16TSSOP

Shipment

Delivery Time

In-stock items can be shipped within 24 hours. Some parts will be arranged for delivery within 1-2 days from the date all items arrive at our warehouse. And Allelco ships order once a day at about 17:00, except Sunday. Once the goods are shipped, the estimated delivery time depends on the shipping methods and Delivery destination. The table below shows are the logistic time for some common countries.

Delivery Cost

- > Use your express account for shipment if you have one.
 - > Use our account for the shipment. Refer to the table below for the approximate charges.
- (Different time frame / countries / package size has different price.)

Delivery Method

- > Global Common Shipment by DHL / UPS / FedEx / TNT / EMS / SF we support.
- > Others more shipping ways, please get in touch with your customer manager.

Common Countries Logistic Time Reference

Region	Country	Logistic Time(Day)
America	United States	5
	Brazil	7
Europe	Germany	5
	United Kingdom	4
	Italy	5
Oceania	Australia	6
	New Zealand	7
Asia	India	6
	Japan	7
Middle East	Israel	6

DHL & FedEx Shipment Charges Reference

Shipment charges(KG)	Reference DHL(USD\$)
0.00kg-1.00kg	USD\$60.00
1.00kg-2.00kg	USD\$70.00
2.00kg-3.00kg	USD\$80.00

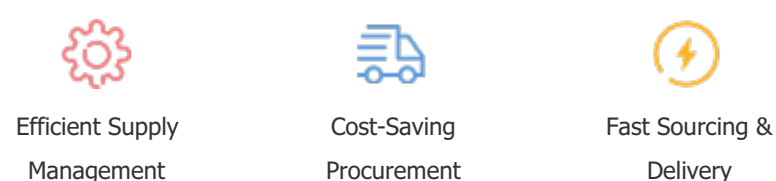
Note: The above table is for reference only. There may have some data bias for the uncontrollable factors.
Contact us if you have any questions.

Payment Support

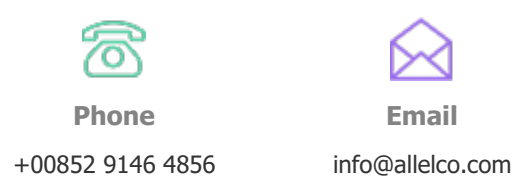
The payment method can be chosen from the methods shown below:
Wire Transfer (T/T, Bank Transfer), Western Union, Credit card,
PayPal.



Your Faithful Supply Chain Partner -



Contact us if you have any questions.



Certifications & Memberships



View More