

Image may be representation.
See specifications for product details.



MCP120T-315I/TT

Manufacturer Part Number	MCP120T-315I/TT
Manufacturer	Microchip Technology
Allelco Part Number	32D-MCP120T-315I/TT
ECAD Model	PCB Symbol, Footprint & 3D Model
Parts Description	IC SUPERVISOR 1 CHANNEL SOT23-3
Package	TO-236-3, SC-59, SOT-23-3
Data sheet	MCP or TCx Series Product Brief.pdf MCP120, 130.pdf
RoHs Status	ROHS3 Compliant

[Get a Quote](#)

MCP120T-315I/TT - Microchip Technology. New Original in Stock. Download Linear Technology MCP120T-315I/TT datasheet/specifications on AllelcoElec.com.
Request a quote for MCP120T-315I/TT, please send us email: info@allelco.com

Specifications

MCP120T-315I/TT Tech Specifications
MCP120T-315I/TT - Microchip Technology technical specifications, attributes, parameters

Product Attribute	Attribute Value	Product Attribute	Attribute Value
Manufacturer	Microchip Technology	Package / Case	TO-236-3, SC-59, SOT-23-3
Voltage - Threshold	3.075V	Package	Tape & Reel (TR)
Type	Simple Reset/Power-On Reset	Output	Open Drain or Open Collector
Supplier Device Package	SOT-23-3	Operating Temperature	-40°C ~ 85°C (TA)
Series	-	Number of Voltages Monitored	1
Reset Timeout	150ms Minimum	Mounting Type	Surface Mount
Reset	Active Low	Base Product Number	MCP120

Parts with Similar Specifications

The three parts on the right have similar specifications to Microchip Technology MCP120T-315I/TT

Product Attribute				
Part Number	MCP120T-315I/TT	MCP120-300GI/TO	MCP120-485DI/TO	MCP120-485GI/TO
Manufacturer	Microchip Technology	Microchip Technology	Microchip Technology	Microchip Technology
Number of Voltages Monitored	1	1	1	1
Type	Simple Reset/Power-On Reset	Simple Reset/Power-On Reset	Simple Reset/Power-On Reset	Simple Reset/Power-On Reset
Base Product Number	MCP120	MCP120	MCP120	MCP120
Operating Temperature	-40°C ~ 85°C (TA)	-40°C ~ 85°C (TA)	-40°C ~ 85°C (TA)	-40°C ~ 85°C (TA)
Series	-	-	-	-
Reset Timeout	150ms Minimum	150ms Minimum	150ms Minimum	150ms Minimum
Package / Case	TO-236-3, SC-59, SOT-23-3	TO-226-3, TO-92-3 (TO-226AA)	TO-226-3, TO-92-3 (TO-226AA)	TO-226-3, TO-92-3 (TO-226AA)
Mounting Type	Surface Mount	Through Hole	Through Hole	Through Hole
Supplier Device Package	SOT-23-3	TO-92-3	TO-92-3	TO-92-3
Output	Open Drain or Open Collector	Open Drain or Open Collector	Open Drain or Open Collector	Open Drain or Open Collector
Reset	Active Low	Active Low	Active Low	Active Low
Package	Tape & Reel (TR)	Bag	Bag	Bag
Voltage - Threshold	3.075V	2.925V	4.725V	4.725V

MCP120T-315I/TT Datasheet PDF

Download MCP120T-315I/TT pdf datasheets and Microchip Technology documentation for MCP120T-315I/TT - Microchip Technology.

Datasheets

- [MCP or TCx Series Product Brief.pdf](#)
- [MCP120, 130.pdf](#)

PCN Packaging

- [Label and Packing Changes 23/Sep/2015.pdf](#)
- [Packing Changes 10/Oct/2016.pdf](#)

Other Related Documents

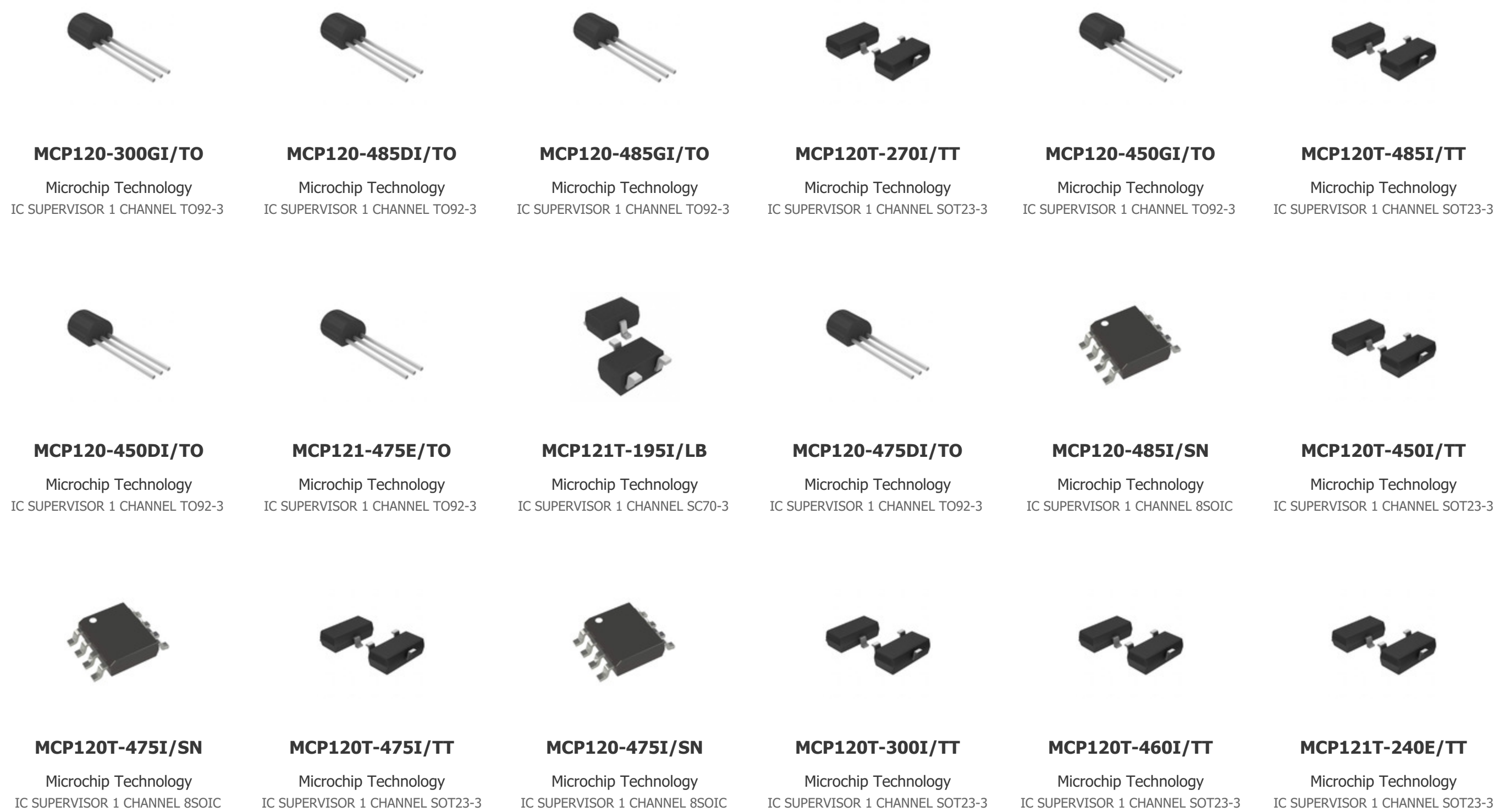
- [Cylindrical Battery Holders.pdf](#)

PCN Assembly/Origin

- [2.73KHz.pdf](#)

Customers Also Interested in

Recommended Products



Shipment

Delivery Time

In-stock items can be shipped within 24 hours. Some parts will be arranged for delivery within 1-2 days from the date all items arrive at our warehouse. And Allelco ships order once a day at about 17:00, except Sunday. Once the goods are shipped, the estimated delivery time depends on the shipping methods and Delivery destination. The table below shows are the logistic time for some common countries.

Delivery Cost

> Use your express account for shipment if you have one.

> Use our account for the shipment. Refer to the table below for the approximate charges.

(Different time frame / countries / package size has different price.)

Delivery Method

> Global Common Shipment by DHL / UPS / FedEx / TNT / EMS / SF we support.

> Others more shipping ways, please get in touch with your customer manager.

Common Countries Logistic Time Reference		
Region	Country	Logistic Time(Day)
America	United States	5
	Brazil	7
Europe	Germany	5
	United Kingdom	4
	Italy	5
Oceania	Australia	6
	New Zealand	7
Asia	India	6
	Japan	7
Middle East	Israel	6

DHL & FedEx Shipment Charges Reference	
Shipment charges(KG)	Reference DHL(USD\$)
0.00kg-1.00kg	USD\$60.00
1.00kg-2.00kg	USD\$70.00
2.00kg-3.00kg	USD\$80.00

Note: The above table is for reference only. There may have some data bias for the uncontrollable factors.

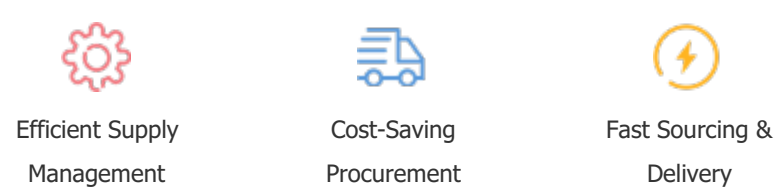
Contact us if you have any questions.

Payment Support

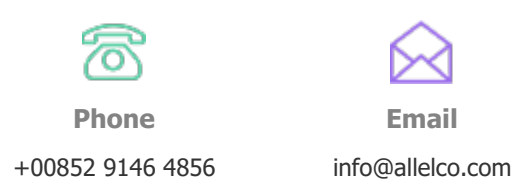
The payment method can be chosen from the methods shown below:
Wire Transfer (T/T, Bank Transfer), Western Union, Credit card, PayPal.



Your Faithful Supply Chain Partner -



Contact us if you have any questions.



Certifications & Memberships



[View More](#)