



Image may be representation.
See specifications for product details.



CRCW1206100RFKEAHP

Manufacturer Part Number	CRCW1206100RFKEAHP
Manufacturer	Dale / Vishay
Allelco Part Number	32D-CRCW1206100RFKEAHP
ECAD Model	PCB Symbol, Footprint & 3D Model
Parts Description	RES SMD 100 OHM 1% 3/4W 1206
Package	1206 (3216 Metric)
Data sheet	CRCW-HP e3 Series.pdf CRCW-HP e3 Series.pdf
RoHs Status	ROHS3 Compliant

Get a Quote

CRCW1206100RFKEAHP - Vishay Dale. New Original in Stock. Download Linear Technology CRCW1206100RFKEAHP datasheet/specifications on AllelcoElec.com.
Request a quote for CRCW1206100RFKEAHP, please send us email: info@allelco.com

Specifications

CRCW1206100RFKEAHP Tech Specifications
CRCW1206100RFKEAHP - Vishay Dale technical specifications, attributes, parameters

Product Attribute	Attribute Value	Product Attribute	Attribute Value
Manufacturer	Dale / Vishay	Package / Case	1206 (3216 Metric)
Tolerance	±1%	Package	Tape & Reel (TR)
Temperature Coefficient	±100ppm/°C	Operating Temperature	-55°C ~ 155°C
Supplier Device Package	1206	Number of Terminations	2
Size / Dimension	0.122" L x 0.063" W (3.10mm x 1.60mm)	Height - Seated (Max)	0.026" (0.65mm)
Series	CRCW-HP	Features	Automotive AEC-Q200, Pulse Withstanding
Resistance	100 Ohms	Failure Rate	-
Ratings	AEC-Q200	Composition	Thick Film
Power (Watts)	0.75W, 3/4W	Base Product Number	CRCW1206

Parts with Similar Specifications

The three parts on the right have similar specifications to Vishay Dale CRCW1206100RFKEAHP

Product Attribute				
Part Number	CRCW1206100RFKEAHP	CRCW1206100RFKEA	CRCW120618R2FKEAHP	CRCW1206120RJNEA
Manufacturer	Vishay Dale	Vishay Dale	Vishay Dale	Vishay Dale
Ratings	AEC-Q200	AEC-Q200	AEC-Q200	AEC-Q200
Number of Terminations	2	2	2	2
Resistance	100 Ohms	100 Ohms	18.2 Ohms	120 Ohms
Supplier Device Package	1206	1206	1206	1206
Package / Case	1206 (3216 Metric)	1206 (3216 Metric)	1206 (3216 Metric)	1206 (3216 Metric)
Failure Rate	-	-	-	-
Tolerance	±1%	±1%	±1%	±5%
Temperature Coefficient	±100ppm/°C	±100ppm/°C	±100ppm/°C	±200ppm/°C
Base Product Number	CRCW1206	CRCW1206	CRCW1206	CRCW1206
Composition	Thick Film	Thick Film	Thick Film	Thick Film
Operating Temperature	-55°C ~ 155°C	-55°C ~ 155°C	-55°C ~ 155°C	-55°C ~ 155°C
Power (Watts)	0.75W, 3/4W	0.25W, 1/4W	0.75W, 3/4W	0.25W, 1/4W
Height - Seated (Max)	0.026" (0.65mm)	0.024" (0.60mm)	0.026" (0.65mm)	0.024" (0.60mm)
Size / Dimension	0.122" L x 0.063" W (3.10mm x 1.60mm)	0.126" L x 0.063" W (3.20mm x 1.60mm)	0.122" L x 0.063" W (3.10mm x 1.60mm)	0.126" L x 0.063" W (3.20mm x 1.60mm)
Series	CRCW-HP	CRCW	CRCW-HP	CRCW
Features	Automotive AEC-Q200, Pulse Withstanding	Automotive AEC-Q200	Automotive AEC-Q200, Pulse Withstanding	Automotive AEC-Q200
Package	Tape & Reel (TR)	Tape & Reel (TR)	Tape & Reel (TR)	Tape & Reel (TR)

CRCW1206100RFKEAHP Datasheet PDF

Download CRCW1206100RFKEAHP pdf datasheets and Vishay Dale documentation for CRCW1206100RFKEAHP - Vishay Dale.

Datasheets

CRCW-HP e3 Series.pdf

HTML Datasheet

CRCW-HP e3 Series.pdf

Customers Also Interested in

Recommended Products



CRCW1206100RFKEA
Vishay Dale
RES SMD 100 OHM 1% 1/4W 1206



CRCW120618R2FKEAHP
Vishay Dale
RES SMD 18.2 OHM 1% 3/4W 1206



CRCW1206120RJNEA
Vishay Dale
RES SMD 120 OHM 5% 1/4W 1206



CRCW120615R0FKEA
Vishay Dale
RES SMD 15 OHM 1% 1/4W 1206



CRCW1206180RJNEA
Vishay Dale
RES SMD 180 OHM 5% 1/4W 1206



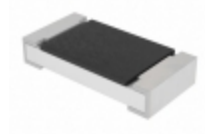
CRCW120610R0JNEAIF
Vishay Dale
RES SMD 10 OHM 5% 1/4W 1206



CRCW12060000Z0EAC
Vishay Dale
RES 0 OHM JUMPER 1/4W 1206



CRCW120610R0FKEA
Vishay Dale
RES SMD 10 OHM 1% 1/4W 1206



CRCW12060000Z0EAFP
Dale / Vishay
RES SMD 0 OHM JUMPER 3/4W 1206



CRCW12060000Z0EA
Dale / Vishay
RES SMD 0 OHM JUMPER 1/4W 1206



CRCW1206120RFKEAC
Vishay Dale
RES 120 OHM 1% 1/4W 1206



CRCW08059K76FKEA
Vishay Dale
RES SMD 9.76K OHM 1% 1/8W 0805



CRCW1206
Electro-Films (EFI) / Vishay



CRCW120611R8FKEAC
Vishay Dale
RES 11.8 OHM 1% 1/4W 1206



CRCW120612R1FKEA
Vishay Dale
RES SMD 12.1 OHM 1% 1/4W 1206



CRCW1206120KJNEX00
Electro-Films (EFI) / Vishay



CRCW1206100KFKEA
Vishay Dale
RES SMD 100K OHM 1% 1/4W 1206



CRCW12060000Z0EC
Dale / Vishay
RES SMD 0 OHM JUMPER 1/4W 1206

Shipment

Delivery Time

In-stock items can be shipped within 24 hours. Some parts will be arranged for delivery within 1-2 days from the date all items arrive at our warehouse. And Allelco ships order once a day at about 17:00, except Sunday. Once the goods are shipped, the estimated delivery time depends on the shipping methods and Delivery destination. The table below shows are the logistic time for some common countries.

Delivery Cost

- > Use your express account for shipment if you have one.
 - > Use our account for the shipment. Refer to the table below for the approximate charges.
- (Different time frame / countries / package size has different price.)

Delivery Method

- > Global Common Shipment by DHL / UPS / FedEx / TNT / EMS / SF we support.
- > Others more shipping ways, please get in touch with your customer manager.

Common Countries Logistic Time Reference		
Region	Country	Logistic Time(Day)
America	United States	5
	Brazil	7
Europe	Germany	5
	United Kingdom	4
	Italy	5
Oceania	Australia	6
	New Zealand	7
Asia	India	6
	Japan	7
Middle East	Israel	6

DHL & FedEx Shipment Charges Reference	
Shipment charges(KG)	Reference DHL(USD\$)
0.00kg-1.00kg	USD\$60.00
1.00kg-2.00kg	USD\$70.00
2.00kg-3.00kg	USD\$80.00

Note: The above table is for reference only. There may have some data bias for the uncontrollable factors.
Contact us if you have any questions.

Payment Support

The payment method can be chosen from the methods shown below:
Wire Transfer (T/T, Bank Transfer), Western Union, Credit card, PayPal.



Your Faithful Supply Chain Partner -

- Efficient Supply Management
- Cost-Saving Procurement
- Fast Sourcing & Delivery

Contact us if you have any questions.

- Phone
+00852 9146 4856
- Email
info@allelco.com

Certifications & Memberships



[View More](#)