



Image may be representation.
See specifications for product details.



EP2C5T144I8N

Manufacturer Part Number	EP2C5T144I8N
Manufacturer	Intel
Allelco Part Number	32D-EP2C5T144I8N
ECAD Model	Request Free CAD Models
Parts Description	IC FPGA 89 I/O 144TQFP
Package	144-LQFP
Data sheet	Virtual JTAG Megafuntion Guide.pdf
RoHs Status	RoHS Compliant

Get a Quote

EP2C5T144I8N - Intel.New Original in Stock. Download Linear Technology EP2C5T144I8N datasheet/specifications on AllelcoElec.com.
Request a quote for EP2C5T144I8N, please send us email: info@allelco.com

Specifications

EP2C5T144I8N Tech Specifications

EP2C5T144I8N - Intel technical specifications, attributes, parameters

Product Attribute	Attribute Value	Product Attribute	Attribute Value
Manufacturer	Intel	Operating Temperature	-40°C ~ 100°C (TJ)
Voltage - Supply	1.15V ~ 1.25V	Number of Logic Elements/Cells	4608
Total RAM Bits	119808	Number of LABs/CLBs	288
Supplier Device Package	144-TQFP (20x20)	Number of I/O	89
Series	Cyclone® II	Mounting Type	Surface Mount
Package / Case	144-LQFP	Base Product Number	EP2C5
Package	Tray		

Parts with Similar Specifications

The three parts on the right have similar specifications to Intel EP2C5T144I8N

Product Attribute				
Part Number	EP2C5T144I8N	EP2C5T144C8N	EP2C5T144C6N	EP2C70F672C8N
Manufacturer	Intel	Intel	Intel	Intel
Package	Tray	Tray	Tray	Tray
Number of LABs/CLBs	288	288	288	4276
Operating Temperature	-40°C ~ 100°C (TJ)	0°C ~ 85°C (TJ)	0°C ~ 85°C (TJ)	0°C ~ 85°C (TJ)
Supplier Device Package	144-TQFP (20x20)	144-TQFP (20x20)	144-TQFP (20x20)	672-FBGA (27x27)
Package / Case	144-LQFP	144-LQFP	144-LQFP	672-BGA
Base Product Number	EP2C5	EP2C5	EP2C5	EP2C70
Voltage - Supply	1.15V ~ 1.25V	1.15V ~ 1.25V	1.15V ~ 1.25V	1.15V ~ 1.25V
Total RAM Bits	119808	119808	119808	1152000
Series	Cyclone® II	Cyclone® II	Cyclone® II	Cyclone® II
Number of I/O	89	89	89	422
Number of Logic Elements/Cells	4608	4608	4608	68416
Mounting Type	Surface Mount	Surface Mount	Surface Mount	Surface Mount

EP2C5T144I8N Datasheet PDF

Download EP2C5T144I8N pdf datasheets and Intel documentation for EP2C5T144I8N - Intel.

Datasheets

[Virtual JTAG Megafuntion Guide.pdf](#)

PCN Design/Specification

[Cylindrical Battery Holders.pdf](#)

PCN Packaging

[Mult Dev Label CHG 24/Jan/2020.pdf](#)

[Mult Dev Label Chgs 24/Feb/2020.pdf](#)

Customers Also Interested in

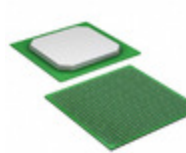
Recommended Products



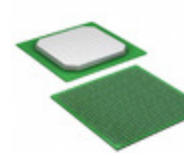
EP2C5T144C8N
Intel
IC FPGA 89 I/O 144TQFP



EP2C5T144C6N
Intel
IC FPGA 89 I/O 144TQFP



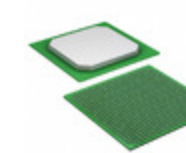
EP2C70F672C8N
Intel
IC FPGA 422 I/O 672FBGA



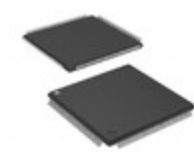
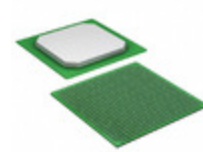
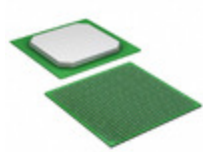
EP2C70F672I8N
Intel
IC FPGA 422 I/O 672FBGA



EP2C5Q208C8N
Intel
IC FPGA 142 I/O 208QFP



EP2C70F672C8
Intel
IC FPGA 422 I/O 672FBGA



EP2C60F672I4N

Altera (Intel)

EP2C5Q208I8N

Intel
IC FPGA 142 I/O 208QFP

EP2C70F672C6N

Intel
IC FPGA 422 I/O 672FBGA

EP2C70F672C7N

Intel
IC FPGA 422 I/O 672FBGA

EP2C5T144C8

Intel
IC FPGA 89 I/O 144TQFP

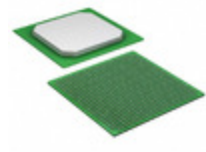
EP2C70F896C6

Intel
IC FPGA 622 I/O 896FBGA



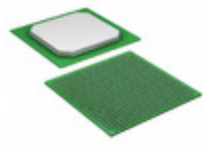
EP2C5T144C7N

Intel
IC FPGA 89 I/O 144TQFP



EP2C70F672C7

Intel
IC FPGA 422 I/O 672FBGA



EP2C70F672I8

Intel
IC FPGA 422 I/O 672FBGA



EP2C5Q208C7N

Intel
IC FPGA 142 I/O 208QFP



EP2C5Q208C8

Intel
IC FPGA 142 I/O 208QFP



EP2C5T144C7

Intel
IC FPGA 89 I/O 144TQFP

Shipment

Delivery Time

In-stock items can be shipped within 24 hours. Some parts will be arranged for delivery within 1-2 days from the date all items arrive at our warehouse. And Allelco ships order once a day at about 17:00, except Sunday. Once the goods are shipped, the estimated delivery time depends on the shipping methods and Delivery destination. The table below shows are the logistic time for some common countries.

Delivery Cost

> Use your express account for shipment if you have one.

> Use our account for the shipment. Refer to the table below for the approximate charges.

(Different time frame / countries / package size has different price.)

Delivery Method

> Global Common Shipment by DHL / UPS / FedEx / TNT / EMS / SF we support.

> Others more shipping ways, please get in touch with your customer manager.

Common Countries Logistic Time Reference

Region	Country	Logistic Time(Day)
America	United States	5
	Brazil	7
Europe	Germany	5
	United Kingdom	4
	Italy	5
Oceania	Australia	6
	New Zealand	7
Asia	India	6
	Japan	7
Middle East	Israel	6

DHL & FedEx Shipment Charges Reference

Shipment charges(KG)	Reference DHL(USD\$)
0.00kg-1.00kg	USD\$60.00
1.00kg-2.00kg	USD\$70.00
2.00kg-3.00kg	USD\$80.00

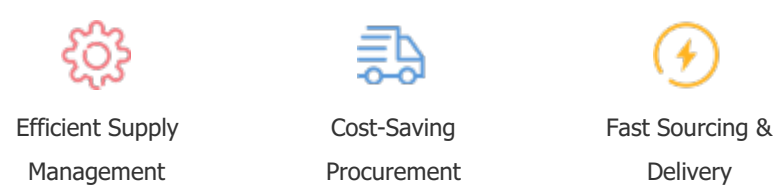
Note: The above table is for reference only. There may have some data bias for the uncontrollable factors.
Contact us if you have any questions.

Payment Support

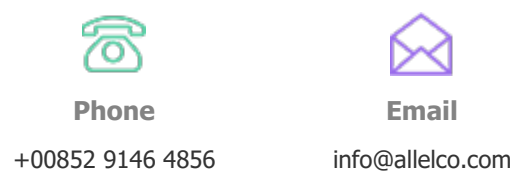
The payment method can be chosen from the methods shown below:
Wire Transfer (T/T, Bank Transfer), Western Union, Credit card, PayPal.



Your Faithful Supply Chain Partner -



Contact us if you have any questions.



Certifications & Memberships



View More



Contact us

Address: Flat/Rm C 13/F Harvard Commercial Building 105-111 Thomson Road, Wan Chai, Hong Kong

Phone: +00852 9146 4856

Fax: +00852 3010 8510

Email: info@allelco.com

Copyright © 2012-2023 AllelcoElec.com. All rights reserved.