



Image may be representation.  
See specifications for product details.



## STTH6110TV2

Manufacturer Part Number	<b>STTH6110TV2</b>
Manufacturer	<b>STMicroelectronics</b>
Allelco Part Number	32D-STTH6110TV2
ECAD Model	3D Model
Parts Description	DIODE MODULE 1KV 30A ISOTOP
Package	ISOTOP
Data sheet	<b>STTH6110TV.pdf</b>
RoHs Status	<b>ROHS3 Compliant</b>

**Get a Quote**

STTH6110TV2 - STMicroelectronics.New Original in Stock. Download Linear Technology STTH6110TV2 datasheet/specifications on AllelcoElec.com.  
Request a quote for STTH6110TV2, please send us email: [info@allelco.com](mailto:info@allelco.com)

### Specifications

STTH6110TV2 Tech Specifications  
STTH6110TV2 - STMicroelectronics technical specifications, attributes, parameters

Product Attribute	Attribute Value	Product Attribute	Attribute Value
Manufacturer	STMicroelectronics	Package / Case	ISOTOP
Voltage - Forward (Vf) (Max) @ If	2 V @ 30 A	Package	Tube
Voltage - DC Reverse (Vr) (Max)	1000 V	Operating Temperature - Junction	150°C (Max)
Technology	Standard	Mounting Type	Chassis Mount
Supplier Device Package	ISOTOP®	Diode Configuration	2 Independent
Speed	Fast Recovery =< 500ns, > 200mA (Io)	Current - Reverse Leakage @ Vr	15 µA @ 1000 V
Series	-	Current - Average Rectified (Io) (per Diode)	30A
Reverse Recovery Time (trr)	100 ns	Base Product Number	STTH6110

### Parts with Similar Specifications

The three parts on the right have similar specifications to STMicroelectronics STTH6110TV2

Product Attribute				
Part Number	STTH6110TV2	STTH8003CY	STTH6112TV2	STTH60W02CW
Manufacturer	STMicroelectronics	STMicroelectronics	STMicroelectronics	STMicroelectronics
Current - Average Rectified (Io) (per Diode)	30A	40A	30A	30A
Voltage - Forward (Vf) (Max) @ If	2 V @ 30 A	1.25 V @ 40 A	2.25 V @ 30 A	1.15 V @ 30 A
Series	-	Q Automotive	-	-
Technology	Standard	Standard	Standard	Standard
Mounting Type	Chassis Mount	Through Hole	Chassis Mount	Through Hole
Current - Reverse Leakage @ Vr	15 µA @ 1000 V	80 µA @ 300 V	20 µA @ 1200 V	10 µA @ 200 V
Base Product Number	STTH6110	STTH8003	STTH61	STTH60
Speed	Fast Recovery =< 500ns, > 200mA (Io)	Fast Recovery =< 500ns, > 200mA (Io)	Fast Recovery =< 500ns, > 200mA (Io)	Fast Recovery =< 500ns, > 200mA (Io)
Package / Case	ISOTOP	TO-247-3	ISOTOP	TO-247-3
Reverse Recovery Time (trr)	100 ns	60 ns	115 ns	30 ns
Supplier Device Package	ISOTOP®	MAX247™	ISOTOP®	TO-247
Operating Temperature - Junction	150°C (Max)	175°C (Max)	150°C (Max)	175°C (Max)
Diode Configuration	2 Independent	1 Pair Common Cathode	2 Independent	1 Pair Common Cathode
Voltage - DC Reverse (Vr) (Max)	1000 V	300 V	1200 V	200 V
Package	Tube	Tube	Tube	Tube

### STTH6110TV2 Datasheet PDF

Download STTH6110TV2 pdf datasheets and STMicroelectronics documentation for STTH6110TV2 - STMicroelectronics.

#### Datasheets

[STTH6110TV.pdf](#)

#### PCN Design/Specification

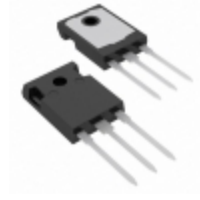
[Mult Dev Adv Material Notice 8/Apr/2019.pdf](#)

#### PCN Assembly/Origin

[Mold compound 20/May/2019.pdf](#)

### Customers Also Interested in

#### Recommended Products

**STTH8003CY**STMicroelectronics  
DIODE ARRAY GP 300V 40A MAX247**STTH6112TV2**STMicroelectronics  
DIODE MODULE 1.2KV 30A ISOTOP**STTH60L06W**STMicroelectronics  
DIODE GEN PURP 600V 60A DO247**STTH60W02CW**STMicroelectronics  
DIODE ARRAY GP 200V 30A TO247**STTH60R04W**STMicroelectronics  
DIODE GEN PURP 400V 60A DO247**STTH60P03SW**STMicroelectronics  
DIODE GEN PURP 300V 60A TO247-3**STTH6102TV1**STMicroelectronics  
DIODE MODULE 200V 30A ISOTOP**STTH75S12W**STMicroelectronics  
DIODE GEN PURP 1.2KV 75A DO247**STTH802B**STMicroelectronics  
DIODE GEN PURP 200V 8A DPAK**STTH60W03CW**STMicroelectronics  
DIODE ARRAY GP 300V 30A TO247**STTH60RQ06W**STMicroelectronics  
DIODE GEN PURP 600V 60A DO247**STTH61W04SW**STMicroelectronics  
DIODE GEN PURP 400V 60A TO247**STTH6110TV1**STMicroelectronics  
DIODE MODULE 1KV 30A ISOTOP**STTH802B-TR**STMicroelectronics  
DIODE GEN PURP 200V 8A DPAK**STTH8006W**STMicroelectronics  
DIODE GEN PURP 600V 80A DO247**STTH802BY-TR**STMicroelectronics  
DIODE GEN PURP 200V 8A DPAK**STTH6112TV1**STMicroelectronics  
DIODE MODULE 1.2KV 30A ISOTOP**STTH60SW03CW**STMicroelectronics  
DIODE ARRAY GP 300V 30A TO247

## Shipment

### Delivery Time

In-stock items can be shipped within 24 hours. Some parts will be arranged for delivery within 1-2 days from the date all items arrive at our warehouse. And Alleco ships order once a day at about 17:00, except Sunday. Once the goods are shipped, the estimated delivery time depends on the shipping methods and Delivery destination. The table below shows are the logistic time for some common countries.

### Delivery Cost

> Use your express account for shipment if you have one.

> Use our account for the shipment. Refer to the table below for the approximate charges.

(Different time frame / countries / package size has different price.)

### Delivery Method

> Global Common Shipment by DHL / UPS / FedEx / TNT / EMS / SF we support.

> Others more shipping ways, please get in touch with your customer manager.

Common Countries Logistic Time Reference		
Region	Country	Logistic Time(Day)
America	United States	5
	Brazil	7
Europe	Germany	5
	United Kingdom	4
	Italy	5
Oceania	Australia	6
	New Zealand	7
Asia	India	6
	Japan	7
Middle East	Israel	6

DHL & FedEx Shipment Charges Reference	
Shipment charges(KG)	Reference DHL(USD\$)
0.00kg-1.00kg	USD\$60.00
1.00kg-2.00kg	USD\$70.00
2.00kg-3.00kg	USD\$80.00

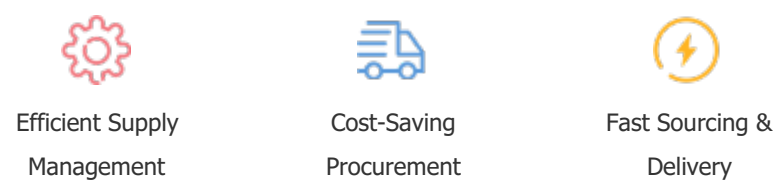
Note: The above table is for reference only. There may have some data bias for the uncontrollable factors.  
Contact us if you have any questions.

## Payment Support

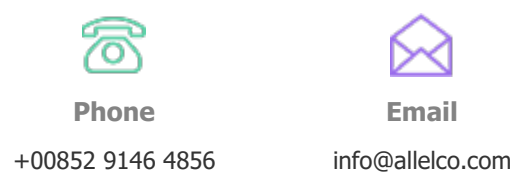
The payment method can be chosen from the methods shown below:  
Wire Transfer (T/T, Bank Transfer), Western Union, Credit card, PayPal.



## Your Faithful Supply Chain Partner -



Contact us if you have any questions.



## Certifications & Memberships



[View More](#)



WWW.ALLECOELEC.COM

### Contact us

Address: Flat/Rm C 13/F Harvard Commercial Building 105-111 Thomson Road, Wan Chai, Hong Kong

Phone: +00852 9146 4856

Fax: +00852 3010 8510

Email: info@Alleco.com

Copyright © 2012-2023 AllecoElec.com. All rights reserved.