

Image may be representation.
See specifications for product details.



SMA6J12CA-TR

Manufacturer Part Number	SMA6J12CA-TR
Manufacturer	STMicroelectronics
Allelco Part Number	32D-SMA6J12CA-TR
ECAD Model	PCB Symbol, Footprint & 3D Model
Parts Description	TVS DIODE 12VWM 23.5VC SMA
Package	DO-214AC, SMA
Data sheet	SMA6J12CA-TR.pdf
RoHs Status	ROHS3 Compliant

[Get a Quote](#)

SMA6J12CA-TR - STMicroelectronics.New Original in Stock. Download Linear Technology SMA6J12CA-TR datasheet/specifications on AllelcoElec.com.
Request a quote for SMA6J12CA-TR, please send us email: info@allelco.com

Specifications

SMA6J12CA-TR Tech Specifications
SMA6J12CA-TR - STMicroelectronics technical specifications, attributes, parameters

Product Attribute	Attribute Value	Product Attribute	Attribute Value
Manufacturer	STMicroelectronics	Package / Case	DO-214AC, SMA
Voltage - Reverse Standoff (Typ)	12V	Package	Tape & Reel (TR)
Voltage - Clamping (Max) @ Ipp	23.5V	Operating Temperature	-55°C ~ 175°C (TJ)
Voltage - Breakdown (Min)	13.3V	Mounting Type	Surface Mount
Type	Zener	Current - Peak Pulse (10/1000µs)	157A (8/20µs)
Supplier Device Package	SMA (DO-214AC)	Capacitance @ Frequency	-
Series	SMA6J, TRANSIL™	Bidirectional Channels	1
Power Line Protection	No	Base Product Number	SMA6J12
Power - Peak Pulse	600W	Applications	General Purpose

Parts with Similar Specifications

The three parts on the right have similar specifications to STMicroelectronics SMA6J12CA-TR

Product Attribute				
Part Number	SMA6J12CA-TR	SMA6J130CA-TR	SMA6J11A	SMA6J13A
Manufacturer	STMicroelectronics	STMicroelectronics	Littelfuse Inc.	Bourns Inc.
Mounting Type	Surface Mount	Surface Mount	Surface Mount	Surface Mount
Supplier Device Package	SMA (DO-214AC)	SMA (DO-214AC)	DO-214AC (SMA)	DO-214AC (SMA)
Applications	General Purpose	General Purpose	General Purpose	Telecom
Operating Temperature	-55°C ~ 175°C (TJ)	-55°C ~ 175°C (TJ)	-65°C ~ 150°C (TJ)	-55°C ~ 150°C (TJ)
Package / Case	DO-214AC, SMA	DO-214AC, SMA	DO-214AC, SMA	DO-214AC, SMA
Capacitance @ Frequency	-	-	-	-
Voltage - Breakdown (Min)	13.3V	144V	12.2V	14.4V
Voltage - Reverse Standoff (Typ)	12V	130V	11V	13V
Series	SMA6J, TRANSIL™	SMA6J, TRANSIL™	SMA6J	SMA6J
Current - Peak Pulse (10/1000µs)	157A (8/20µs)	15A (8/20µs)	33A	28A
Power Line Protection	No	No	No	No
Voltage - Clamping (Max) @ Ipp	23.5V	223V	18.2V	21.5V
Type	Zener	Zener	Zener	Zener
Bidirectional Channels	1	1	-	-
Power - Peak Pulse	600W	600W	600W	600W
Base Product Number	SMA6J12	SMA6J	-	SMA6J13
Package	Tape & Reel (TR)	Tape & Reel (TR)	Tape & Reel (TR)	Tape & Reel (TR)

SMA6J12CA-TR Datasheet PDF

Download SMA6J12CA-TR pdf datasheets and STMicroelectronics documentation for SMA6J12CA-TR - STMicroelectronics.

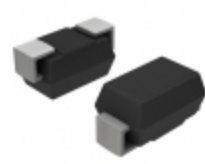
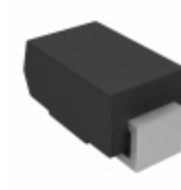
PCN Assembly/Origin

Mult Dev 06/Mar/2020.pdf

Customers Also Interested in

Recommended Products

SMA6J130CA-TR STMicroelectronics TVS DIODE 130VWM 223VC SMA	SMA6J11A Littelfuse Inc. TVS DIODE 11VWM 18.2VC DO214 TR	SMA6J13A Bourns Inc. TVS DIODE 13VWM 21.5VC DO214AC	SMA6J130A-TR STMicroelectronics TVS DIODE 130VWM 223VC SMA	SMA6J13A Taiwan Semiconductor Corporation TVS DIODE 13VWM 20.4VC DO214AC	SMA6J11A Taiwan Semiconductor Corporation TVS DIODE 11VWM 17.2VC DO214AC

**SMA6J11A**Bourns Inc.
TVS DIODE 11VWM 18.2VC DO214AC**SMA6J13A-TR**STMicroelectronics
TVS DIODE 13VWM 23.9VC SMA**SMA6J11CA**Littelfuse Inc.
TVS DIODE 11VWM 18.2VC DO214AC**SMA6J10CA-TR**STMicroelectronics
TVS DIODE 10VWM 19.6VC SMA**SMA6J12A-TR**STMicroelectronics
TVS DIODE 12VWM 23.5VC SMA**SMA6J12CA**Littelfuse Inc.
TVS DIODE 12VWM 19.9VC DO214
TR**SMA6J13CA**Littelfuse Inc.
TVS DIODE 13VWM 21.5V DO214AC
TR**SMA6J11CA**Bourns Inc.
TVS DIODE 11VWM 18.2VC DO214AC**SMA6J13A**Littelfuse Inc.
TVS DIODE 13VWM DO214AC**SMA6J13CA**Bourns Inc.
TVS DIODE 13VWM 21.5VC DO214AC**SMA6J10CA**Bourns Inc.
TVS DIODE 10VWM 17VC DO214AC**SMA6J13A-M3/61**Vishay General Semiconductor -
Diodes Division
TVS DIODE 13VWM 23.9VC DO214AC

Shipment

Delivery Time

In-stock items can be shipped within 24 hours. Some parts will be arranged for delivery within 1-2 days from the date all items arrive at our warehouse. And Allelco ships order once a day at about 17:00, except Sunday. Once the goods are shipped, the estimated delivery time depends on the shipping methods and Delivery destination. The table below shows are the logistic time for some common countries.

Delivery Cost

> Use your express account for shipment if you have one.

> Use our account for the shipment. Refer to the table below for the approximate charges.

(Different time frame / countries / package size has different price.)

Delivery Method

> Global Common Shipment by DHL / UPS / FedEx / TNT / EMS / SF we support.

> Others more shipping ways, please get in touch with your customer manager.

Common Countries Logistic Time Reference		
Region	Country	Logistic Time(Day)
America	United States	5
	Brazil	7
Europe	Germany	5
	United Kingdom	4
	Italy	5
Oceania	Australia	6
	New Zealand	7
Asia	India	6
	Japan	7
Middle East	Israel	6

DHL & FedEx Shipment Charges Reference	
Shipment charges(KG)	Reference DHL(USD\$)
0.00kg-1.00kg	USD\$60.00
1.00kg-2.00kg	USD\$70.00
2.00kg-3.00kg	USD\$80.00

Note: The above table is for reference only. There may have some data bias for the uncontrollable factors.

Contact us if you have any questions.

Payment Support

The payment method can be chosen from the methods shown below:

Wire Transfer (T/T, Bank Transfer), Western Union, Credit card,
PayPal.



Your Faithful Supply Chain Partner -



Efficient Supply
Management



Cost-Saving
Procurement



Fast Sourcing &
Delivery

Contact us if you have any questions.



Phone
+00852 9146 4856



Email
info@allelco.com

Certifications & Memberships



View More

Contact us

Address: Flat/Rm C 13/F Harvard Commercial Building 105-111 Thomson Road, Wan Chai, Hong Kong

Phone: +00852 9146 4856

Fax: +00852 3010 8510

Email: info@Allelco.com