



Image may be representation.  
See specifications for product details.



## BFC233920104

Manufacturer Part Number	<b>BFC233920104</b>
Manufacturer	<b>Draloric/Vishay</b>
Allelco Part Number	32D-BFC233920104
ECAD Model	PCB Symbol, Footprint & 3D Model
Parts Description	<b>CAP FILM 0.1UF 20% 630VDC RADIAL</b>
Package	<b>Radial</b>
Data sheet	BFC233920104.pdf
RoHs Status	<b>ROHS3 Compliant</b>

[Get a Quote](#)

BFC233920104 - Vishay Beyschlag/Draloric/BC Components. New Original in Stock. Download Linear Technology BFC233920104 datasheet/specifications on AllelcoElec.com.  
Request a quote for BFC233920104, please send us email: [info@allelco.com](mailto:info@allelco.com)

### Specifications

BFC233920104 Tech Specifications  
BFC233920104 - Vishay Beyschlag/Draloric/BC Components technical specifications, attributes, parameters

Product Attribute	Attribute Value	Product Attribute	Attribute Value
Manufacturer	Draloric/Vishay	Package	Bulk
Voltage Rating - DC	630V	Operating Temperature	-55°C ~ 110°C
Voltage Rating - AC	310V	Mounting Type	Through Hole
Tolerance	±20%	Lead Spacing	0.394" (10.00mm)
Termination	PC Pins	Height - Seated (Max)	0.472" (12.00mm)
Size / Dimension	0.492" L x 0.236" W (12.50mm x 6.00mm)	Features	-
Series	MKP339	Dielectric Material	Polypropylene (PP), Metallized
Ratings	AEC-Q200, X2	Capacitance	0.1 µF
Package / Case	Radial	Applications	Automotive; EMI, RFI Suppression

### Parts with Similar Specifications

The three parts on the right have similar specifications to Vishay Beyschlag/Draloric/BC Components BFC233920104

Product Attribute				
Part Number	BFC233920104	BFC233913103	BFC233911223	BFC233921104
Manufacturer	Vishay Beyschlag/Draloric/BC Components	Vishay Beyschlag/Draloric/BC Components	Vishay Beyschlag/Draloric/BC Components	Vishay Beyschlag/Draloric/BC Components
Height - Seated (Max)	0.472" (12.00mm)	0.394" (10.00mm)	0.394" (10.00mm)	0.433" (11.00mm)
Features	-	-	-	-
Voltage Rating - AC	310V	310V	310V	310V
Tolerance	±20%	±10%	±10%	±20%
Dielectric Material	Polypropylene (PP), Metallized	Polypropylene (PP), Metallized	Polypropylene (PP), Metallized	Polypropylene (PP), Metallized
Mounting Type	Through Hole	Through Hole	Through Hole	Through Hole
Applications	Automotive; EMI, RFI Suppression	Automotive; EMI, RFI Suppression	Automotive; EMI, RFI Suppression	Automotive; EMI, RFI Suppression
Series	MKP339	MKP339	MKP339	MKP339
Voltage Rating - DC	630V	630V	630V	630V
Termination	PC Pins	PC Pins	PC Pins	PC Pins
Package / Case	Radial	Radial	Radial	Radial
Lead Spacing	0.394" (10.00mm)	0.394" (10.00mm)	0.394" (10.00mm)	0.591" (15.00mm)
Size / Dimension	0.492" L x 0.236" W (12.50mm x 6.00mm)	0.492" L x 0.157" W (12.50mm x 4.00mm)	0.492" L x 0.157" W (12.50mm x 4.00mm)	0.689" L x 0.197" W (17.50mm x 5.00mm)
Ratings	AEC-Q200, X2	AEC-Q200, X2	AEC-Q200, X2	AEC-Q200, X2
Package	Bulk	Bulk	Bulk	Bulk
Capacitance	0.1 µF	10000 pF	0.022 µF	0.1 µF
Operating Temperature	-55°C ~ 110°C	-55°C ~ 110°C	-55°C ~ 110°C	-55°C ~ 110°C

### BFC233920104 Datasheet PDF

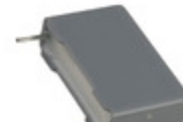
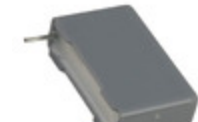
Download BFC233920104 pdf datasheets and Vishay Beyschlag/Draloric/BC Components documentation for BFC233920104 - Vishay Beyschlag/Draloric/BC Components.

### PCN Design/Specification



### Customers Also Interested in

#### Recommended Products



**BFC233913103**

**BFC233911223**

**BFC233921104**

**BFC233920103**

**BFC233861473**

**BFC233863102**

Vishay Beyschlag/Draloric/BC Components

Vishay Beyschlag/Draloric/BC Components

Vishay Beyschlag/Draloric/BC Components

Vishay Beyschlag/Draloric/BC Components

Vishay Beyschlag/Draloric/BC Components

Vishay Beyschlag/Draloric/BC Components

CAP FILM 10000PF 10% 630VDC  
RAD

CAP FILM 0.022UF 10% 630VDC  
RAD

CAP FILM 0.1UF 20% 630VDC  
RADIAL

CAP FILM 10000PF 20% 630VDC  
RAD

CAP FILM 0.047UF 10% 1KVDC  
RAD

CAP FILM 10000PF 10% 1KVDC  
RADIAL



#### BFC233920105

Vishay Beyschlag/Draloric/BC  
Components  
CAP FILM 1UF 20% 630VDC  
RADIAL

#### BFC233913104

Vishay Beyschlag/Draloric/BC  
Components  
CAP FILM 0.1UF 10% 630VDC  
RADIAL

#### BFC233860682

Vishay Beyschlag/Draloric/BC  
Components  
CAP FILM 6800PF 20% 1KVDC  
RADIAL

#### BFC233990005

Vishay Beyschlag/Draloric/BC  
Components  
CAP FILM 0.047UF 20% 630VDC  
RAD

#### BFC233920225

Vishay Beyschlag/Draloric/BC  
Components  
CAP FILM 2.2UF 20% 630VDC  
RADIAL

#### BFC233912104

Vishay Beyschlag/Draloric/BC  
Components  
CAP FILM 0.1UF 10% 630VDC  
RADIAL



#### BFC233927334

Vishay Beyschlag/Draloric/BC  
Components  
CAP FILM 0.33UF 20% 630VDC  
RAD

#### BFC233920333

Vishay Beyschlag/Draloric/BC  
Components  
CAP FILM 0.033UF 20% 630VDC  
RAD

#### BFC233868423

Vishay Beyschlag/Draloric/BC  
Components  
CAP FILM 2200PF 20% 1KVDC  
RADIAL

#### BFC233868399

Vishay Beyschlag/Draloric/BC  
Components  
CAP FILM 3900PF 20% 1KVDC  
RADIAL

#### BFC233921473

Vishay Beyschlag/Draloric/BC  
Components  
CAP FILM 0.047UF 20% 630VDC  
RAD

#### BFC233921103

Vishay Beyschlag/Draloric/BC  
Components  
CAP FILM 10000PF 20% 630VDC  
RAD

## Shipment

### Delivery Time

In-stock items can be shipped within 24 hours. Some parts will be arranged for delivery within 1-2 days from the date all items arrive at our warehouse. And Allelco ships order once a day at about 17:00, except Sunday. Once the goods are shipped, the estimated delivery time depends on the shipping methods and Delivery destination. The table below shows are the logistic time for some common countries.

### Delivery Cost

> Use your express account for shipment if you have one.

> Use our account for the shipment. Refer to the table below for the approximate charges.

(Different time frame / countries / package size has different price.)

### Delivery Method

> Global Common Shipment by DHL / UPS / FedEx / TNT / EMS / SF we support.

> Others more shipping ways, please get in touch with your customer manager.

Common Countries Logistic Time Reference

Region	Country	Logistic Time(Day)
America	United States	5
	Brazil	7
Europe	Germany	5
	United Kingdom	4
	Italy	5
Oceania	Australia	6
	New Zealand	7
Asia	India	6
	Japan	7
Middle East	Israel	6

DHL & FedEx Shipment Charges Reference

Shipment charges(KG)	Reference DHL(USD\$)
0.00kg-1.00kg	USD\$60.00
1.00kg-2.00kg	USD\$70.00
2.00kg-3.00kg	USD\$80.00

Note: The above table is for reference only. There may have some data bias for the uncontrollable factors.  
Contact us if you have any questions.

## Payment Support

The payment method can be chosen from the methods shown below:

Wire Transfer (T/T, Bank Transfer), Western Union, Credit card,  
PayPal.



## Your Faithful Supply Chain Partner -



Efficient Supply  
Management



Cost-Saving  
Procurement



Fast Sourcing &  
Delivery

Contact us if you have any questions.



Phone

+00852 9146 4856



Email

info@allelco.com

## Certifications & Memberships



View More

### Contact us

Address: Flat/Rm C 13/F Harvard Commercial Building 105-111 Thomson Road, Wan Chai, Hong Kong

Phone: +00852 9146 4856

Fax: +00852 3010 8510

Email: info@Allelco.com