



Image may be representation.
See specifications for product details.



AT27C256R-12JC

Manufacturer Part Number	AT27C256R-12JC
Manufacturer	Microchip Technology
Allelco Part Number	32D-AT27C256R-12JC
ECAD Model	Request Free CAD Models
Parts Description	IC EPROM 256KBIT PARALLEL 32PLCC
Package	32-LCC (J-Lead)
Data sheet	Cylindrical Battery Holders.pdf

Get a Quote

AT27C256R-12JC - Microchip Technology. New Original in Stock. Download Linear Technology AT27C256R-12JC datasheet/specifications on AllelcoElec.com.
Request a quote for AT27C256R-12JC, please send us email: info@allelco.com

Specifications

AT27C256R-12JC Tech Specifications
AT27C256R-12JC - Microchip Technology technical specifications, attributes, parameters

Product Attribute	Attribute Value	Product Attribute	Attribute Value
Manufacturer	Microchip Technology	Mounting Type	Surface Mount
Write Cycle Time - Word, Page	-	Memory Type	Non-Volatile
Voltage - Supply	4.5V ~ 5.5V	Memory Size	256Kbit
Technology	EPROM - OTP	Memory Organization	32K x 8
Supplier Device Package	32-PLCC (13.97x11.43)	Memory Interface	Parallel
Series	-	Memory Format	EPROM
Package / Case	32-LCC (J-Lead)	Base Product Number	AT27C256
Package	Tube	Access Time	120 ns
Operating Temperature	0°C ~ 70°C (TC)		

Parts with Similar Specifications

The three parts on the right have similar specifications to Microchip Technology AT27C256R-12JC

Product Attribute				
Part Number	AT27C256R-12JC	AT27C256R-12PC	AT27C2048-90JU-T	AT27C256R-12RC
Manufacturer	Microchip Technology	Microchip Technology	Microchip Technology	Microchip Technology
Memory Type	Non-Volatile	Non-Volatile	Non-Volatile	Non-Volatile
Voltage - Supply	4.5V ~ 5.5V	4.5V ~ 5.5V	4.5V ~ 5.5V	4.5V ~ 5.5V
Access Time	120 ns	120 ns	90 ns	120 ns
Mounting Type	Surface Mount	Through Hole	Surface Mount	Surface Mount
Base Product Number	AT27C256	AT27C256	AT27C2048	AT27C256
Write Cycle Time - Word, Page	-	-	-	-
Operating Temperature	0°C ~ 70°C (TC)	0°C ~ 70°C (TC)	-40°C ~ 85°C (TC)	0°C ~ 70°C (TC)
Memory Interface	Parallel	Parallel	Parallel	Parallel
Technology	EPROM - OTP	EPROM - OTP	EPROM - OTP	EPROM - OTP
Memory Organization	32K x 8	32K x 8	128K x 16	32K x 8
Supplier Device Package	32-PLCC (13.97x11.43)	28-PDIP	44-PLCC (16.6x16.6)	28-SOIC
Series	-	-	-	-
Memory Format	EPROM	EPROM	EPROM	EPROM
Memory Size	256Kbit	256Kbit	2Mbit	256Kbit
Package / Case	32-LCC (J-Lead)	28-DIP (0.600', 15.24mm)	44-LCC (J-Lead)	28-SOIC (0.342', 8.69mm Width)
Package	Tube	Tube	Tape & Reel (TR)	Tube

AT27C256R-12JC Datasheet PDF

Download AT27C256R-12JC pdf datasheets and Microchip Technology documentation for AT27C256R-12JC - Microchip Technology.

Datasheets

Cylindrical Battery Holders.pdf

PCN Packaging








MBB/Label Chgs 16/Nov/2018.pdf

Transfer to Microchip/Label/Pkg 5/Sep/2016.pdf

Customers Also Interested in

Recommended Products



AT27C256E-45RI Atmel (Microchip Technology)	AT27C256R-12PC Microchip Technology IC EPROM 256KBIT PARALLEL 28DIP	AT27C256R-15DC Atmel (Microchip Technology)	AT27C256F-90JC Atmel (Microchip Technology)	AT27C2048-90JU-T Microchip Technology IC EPROM 2MBIT PARALLEL 44PLCC	AT27C256R-12RC Microchip Technology IC EPROM 256KBIT PARALLEL 28SOIC
					
AT27C2048-70PC Microchip Technology IC EPROM 2MBIT PARALLEL 40DIP	AT27C2048-90JU Microchip Technology IC EPROM 2MBIT PARALLEL 44PLCC	AT27C256R-15DI Atmel (Microchip Technology)	AT27C2048-90JC Microchip Technology IC EPROM 2MBIT PARALLEL 44PLCC	AT27C256R-12JI Microchip Technology IC EPROM 256KBIT PARALLEL 32PLCC	AT27C256R-15JC Microchip Technology IC EPROM 256KBIT PARALLEL 32PLCC
					
AT27C256R-12RI Microchip Technology IC EPROM 256KBIT PARALLEL 28SOIC	AT27C256R-12PI Microchip Technology IC EPROM 256KBIT PARALLEL 28DIP	AT27C2048-90PC Microchip Technology IC EPROM 2MBIT PARALLEL 40DIP	AT27C2048-70VI Microchip Technology IC EPROM 2MBIT PARALLEL 40VSOP	AT27C256R-10JC Atmel (Microchip Technology)	AT27C256R-12TC Microchip Technology IC EPROM 256KBIT PARALLEL 28TSOP

Shipment

Delivery Time

In-stock items can be shipped within 24 hours. Some parts will be arranged for delivery within 1-2 days from the date all items arrive at our warehouse. And Allelco ships order once a day at about 17:00, except Sunday. Once the goods are shipped, the estimated delivery time depends on the shipping methods and Delivery destination. The table below shows are the logistic time for some common countries.

Delivery Cost

> Use your express account for shipment if you have one.

> Use our account for the shipment. Refer to the table below for the approximate charges.

(Different time frame / countries / package size has different price.)

Delivery Method

> Global Common Shipment by DHL / UPS / FedEx / TNT / EMS / SF we support.

> Others more shipping ways, please get in touch with your customer manager.

Common Countries Logistic Time Reference		
Region	Country	Logistic Time(Day)
America	United States	5
	Brazil	7
Europe	Germany	5
	United Kingdom	4
	Italy	5
Oceania	Australia	6
	New Zealand	7
Asia	India	6
	Japan	7
Middle East	Israel	6

DHL & FedEx Shipment Charges Reference	
Shipment charges(KG)	Reference DHL(USD\$)
0.00kg-1.00kg	USD\$60.00
1.00kg-2.00kg	USD\$70.00
2.00kg-3.00kg	USD\$80.00

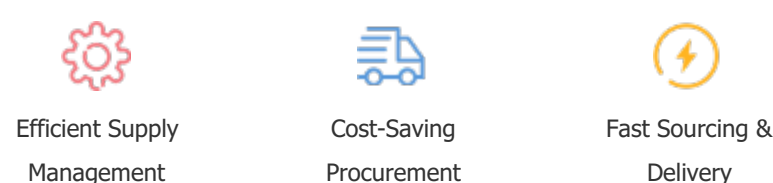
Note: The above table is for reference only. There may have some data bias for the uncontrollable factors.
Contact us if you have any questions.

Payment Support

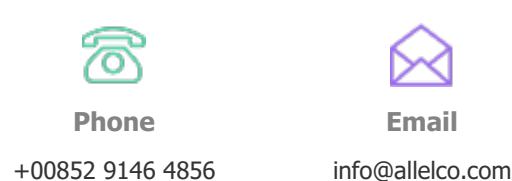
The payment method can be chosen from the methods shown below:
Wire Transfer (T/T, Bank Transfer), Western Union, Credit card, PayPal.



Your Faithful Supply Chain Partner -



Contact us if you have any questions.



Certifications & Memberships



[View More](#)