

Image may be representation.
See specifications for product details.



NSR0230M2T5G

Manufacturer Part Number	NSR0230M2T5G
Manufacturer	onsemi
Allelco Part Number	32D-NSR0230M2T5G
ECAD Model	PCB Symbol, Footprint & 3D Mode
Parts Description	DIODE SCHOTTKY 30V 200MA SOD723
Package	SOD-723
Data sheet	NSR0230M2T5G.pdf
RoHs Status	ROHS3 Compliant

[Get a Quote](#)

NSR0230M2T5G - onsemi.New Original in Stock. Download Linear Technology NSR0230M2T5G datasheet/specifications on AllelcoElec.com.
Request a quote for NSR0230M2T5G, please send us email: info@allelco.com

Specifications

NSR0230M2T5G Tech Specifications

NSR0230M2T5G - onsemi technical specifications, attributes, parameters

Product Attribute	Attribute Value	Product Attribute	Attribute Value
Manufacturer	onsemi	Package	Tape & Reel (TR)
Voltage - Forward (Vf) (Max) @ If	500 mV @ 200 mA	Operating Temperature - Junction	-55°C ~ 125°C
Voltage - DC Reverse (Vr) (Max)	30 V	Mounting Type	Surface Mount
Technology	Schottky	Current - Reverse Leakage @ Vr	100 µA @ 30 V
Supplier Device Package	SOD-723	Current - Average Rectified (Io)	200mA
Speed	Small Signal =< 200mA (Io), Any Speed	Capacitance @ Vr, F	-
Series	-	Base Product Number	NSR0230
Package / Case	SOD-723		

Parts with Similar Specifications

The three parts on the right have similar specifications to onsemi NSR0230M2T5G

Product Attribute				
Part Number	NSR0230M2T5G	NSR0240V2T1G	NSR0230P2T5G	NSR0240V2T5G
Manufacturer	onsemi	onsemi	onsemi	onsemi
Voltage - Forward (Vf) (Max) @ If	500 mV @ 200 mA	700 mV @ 200 mA	500 mV @ 200 mA	700 mV @ 200 mA
Current - Reverse Leakage @ Vr	100 µA @ 30 V	10 µA @ 40 V	10 µA @ 10 V	10 µA @ 40 V
Package / Case	SOD-723	SC-79, SOD-523	SOD-923	SC-79, SOD-523
Current - Average Rectified (Io)	200mA	250mA	200mA	250mA
Operating Temperature - Junction	-55°C ~ 125°C	-55°C ~ 150°C	-55°C ~ 125°C	-55°C ~ 150°C
Series	-	-	-	-
Base Product Number	NSR0230	NSR0240	NSR0230	NSR0240
Voltage - DC Reverse (Vr) (Max)	30 V	40 V	30 V	40 V
Technology	Schottky	Schottky	Schottky	Schottky
Capacitance @ Vr, F	-	4pF @ 5V, 1MHz	-	4pF @ 5V, 1MHz
Speed	Small Signal =< 200mA (Io), Any Speed	Fast Recovery =< 500ns, > 200mA (Io)	Small Signal =< 200mA (Io), Any Speed	Fast Recovery =< 500ns, > 200mA (Io)
Supplier Device Package	SOD-723	SOD-523	SOD-923	SOD-523
Mounting Type	Surface Mount	Surface Mount	Surface Mount	Surface Mount
Package	Tape & Reel (TR)	Tape & Reel (TR)	Tape & Reel (TR)	Tape & Reel (TR)

NSR0230M2T5G Datasheet PDF

Download NSR0230M2T5G pdf datasheets and onsemi documentation for NSR0230M2T5G - onsemi.

Datasheets

[NSR0230M2T5G.pdf](#)

Environmental Information

[onsemi REACH.pdf](#)

[onsemi RoHS.pdf](#)

Customers Also Interested in

Recommended Products



NSR0240V2T1G

onsemi
DIODE SCHOTTKY 40V 250MA SOD523



NSR0230P2T5G

onsemi
DIODE SCHOTTKY 30V 200MA SOD923



NSR0240V2T5G

onsemi
DIODE SCHOTTKY 40V 250MA SOD523



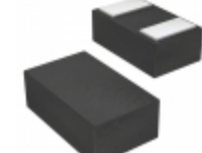
NSR01F30NXT5G

onsemi
DIODE SCHOTTKY 30V 100MA 2DSN



NSR02100HT1G

onsemi
DIODE SCHOTTKY 100V 200MA SOD323



NSR01F30MXT5G

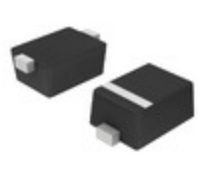
onsemi
DIODE SCHOTTKY 30V 100MA 2X3DFN

**NSR0240MXT5G**

onsemi
DIODE SCHOTTKY 40V 200MA
2X2DFN

**NSR01L30NXT5G**

onsemi
DIODE SCHOTTKY 30V 100MA 2DSN

**NSR01L30P2T5G**

onsemi
DIODE SCHOTTKY 30V 100MA
SOD923

**NSR01L30MXT5G**

onsemi
DIODE SCHOTTKY 30V 100MA
2X3DFN

**NSR0230P2**

AMI Semiconductor/onsemi

**NSR0240HT1G**

onsemi
DIODE SCHOTTKY 40V 250MA
SOD323

**NSR0240MX2T5G**

onsemi
DIODE SCHOTTKY 40V 200MA
2X2DFN

**NSR0240P2T5G**

onsemi
DIODE SCHOTTKY 40V 200MA
SOD923

**NSR020A0X543Z**

ABB Power Electronics Inc.
DC DC CONVERTER 0.59-6V 120W

**NSR0170P2T5G**

onsemi
DIODE SCHOTTKY 70V 70MA
SOD923

**NSR01F30NXT5G**

Fairchild Semiconductor
RECTIFIER DIODE, SCHOTTKY, 0.1A,

**NSR0240HT1G-7**

Diodes Incorporated

Shipment

Delivery Time

In-stock items can be shipped within 24 hours. Some parts will be arranged for delivery within 1-2 days from the date all items arrive at our warehouse. And Allelco ships order once a day at about 17:00, except Sunday. Once the goods are shipped, the estimated delivery time depends on the shipping methods and Delivery destination. The table below shows are the logistic time for some common countries.

Delivery Cost

> Use your express account for shipment if you have one.

> Use our account for the shipment. Refer to the table below for the approximate charges.

(Different time frame / countries / package size has different price.)

Delivery Method

> Global Common Shipment by DHL / UPS / FedEx / TNT / EMS / SF we support.

> Others more shipping ways, please get in touch with your customer manager.

Common Countries Logistic Time Reference		
Region	Country	Logistic Time(Day)
America	United States	5
	Brazil	7
Europe	Germany	5
	United Kingdom	4
	Italy	5
Oceania	Australia	6
	New Zealand	7
Asia	India	6
	Japan	7
Middle East	Israel	6

DHL & FedEx Shipment Charges Reference	
Shipment charges(KG)	Reference DHL(USD\$)
0.00kg-1.00kg	USD\$60.00
1.00kg-2.00kg	USD\$70.00
2.00kg-3.00kg	USD\$80.00

Note: The above table is for reference only. There may have some data bias for the uncontrollable factors.
Contact us if you have any questions.

Payment Support

The payment method can be chosen from the methods shown below:
Wire Transfer (T/T, Bank Transfer), Western Union, Credit card,
PayPal.



Your Faithful Supply Chain Partner -



Efficient Supply
Management



Cost-Saving
Procurement



Fast Sourcing &
Delivery

Contact us if you have any questions.



Phone

+00852 9146 4856



Email

info@allelco.com

Certifications & Memberships



View More