



Image may be representation.
See specifications for product details.



EPC4QC100N

| | |
|--------------------------|--|
| Manufacturer Part Number | EPC4QC100N |
| Manufacturer | Intel |
| Allelco Part Number | 32D-EPC4QC100N |
| ECAD Model | Request Free CAD Models |
| Parts Description | IC CONFIG DEVICE 4MBIT 100QFP |
| Package | 100-BQFP |
| Data sheet | Enhanced Configuration (EPC) Devices Datasheet.pdf |

Get a Quote

EPC4QC100N - Intel.New Original in Stock. Download Linear Technology EPC4QC100N datasheet/specifications on AllelcoElec.com.
Request a quote for EPC4QC100N, please send us email: info@allelco.com

Specifications

EPC4QC100N Tech Specifications
EPC4QC100N - Intel technical specifications, attributes, parameters

| Product Attribute | Attribute Value | Product Attribute | Attribute Value |
|-------------------------|------------------------|-----------------------|-----------------|
| Manufacturer | Intel | Package | Tray |
| Voltage - Supply | 3V ~ 3.6V | Operating Temperature | 0°C ~ 70°C |
| Supplier Device Package | 100-PQFP (20x14) | Mounting Type | Surface Mount |
| Series | EPC | Memory Size | 4MB |
| Programmable Type | In System Programmable | Base Product Number | EPC4 |
| Package / Case | 100-BQFP | | |

Parts with Similar Specifications

The three parts on the right have similar specifications to Intel EPC4QC100N

| Product Attribute | | | | |
|-------------------------|------------------------|------------------------|------------------------|------------------------|
| Part Number | EPC4QC100N | EPC8QC100 | EPC4QI100 | EPC8QI100 |
| Manufacturer | Intel | Intel | Intel | Intel |
| Memory Size | 4MB | 8MB | 4MB | 8MB |
| Package | Tray | Tray | Tray | Tray |
| Voltage - Supply | 3V ~ 3.6V | 3V ~ 3.6V | 3V ~ 3.6V | 3V ~ 3.6V |
| Programmable Type | In System Programmable | In System Programmable | In System Programmable | In System Programmable |
| Package / Case | 100-BQFP | 100-BQFP | 100-BQFP | 100-BQFP |
| Mounting Type | Surface Mount | Surface Mount | Surface Mount | Surface Mount |
| Base Product Number | EPC4 | EPC8 | EPC4 | EPC8 |
| Series | EPC | EPC | EPC | EPC |
| Supplier Device Package | 100-PQFP (20x14) | 100-PQFP (20x14) | 100-PQFP (20x14) | 100-PQFP (20x14) |
| Operating Temperature | 0°C ~ 70°C | 0°C ~ 70°C | -40°C ~ 85°C | -40°C ~ 85°C |

EPC4QC100N Datasheet PDF

Download EPC4QC100N pdf datasheets and Intel documentation for EPC4QC100N - Intel.

Datasheets

[Enhanced Configuration \(EPC\) Devices Datasheet.pdf](#)

PCN Packaging

[All Dev Pkg Chg 1/Aug/2018.pdf](#)

[Mult Dev Dessicant Chg 19/Jul/2019.pdf](#)

PCN Obsolescence/ EOL

[Cylindrical Battery Holders.pdf](#)

Customers Also Interested in

Recommended Products



EPC2TC32U-CAF48
Altera (Intel)

EPC8QC100
Intel
IC CONFIG DEVICE 8MBIT 100QFP

EPC4QI100
Intel
IC CONFIG DEVICE 4MBIT 100QFP

EPC8010
EPC
GANFET N-CH 100V 4A DIE

EPC8QI100
Intel
IC CONFIG DEVICE 8MBIT 100QFP

EPC2TC32UCAF48
Altera (Intel)



NO PICTURE



NO PICTURE

| | | | | | |
|---|---|---|--|---|---|
| EPC2TI32 Intel IC CONFIG DEVICE 1.6MBIT 32TQFP | EPCIO6988-02G ITRI NO PICTURE | EPC4QC100 Intel IC CONFIG DEVICE 4MBIT 100QFP | EPC8009 EPC GANFET N-CH 65V 4A DIE | EPC4QI100N Intel IC CONFIG DEVICE 4MBIT 100QFP | EPC3126G-1-LF PCA Electronics, Inc. |
| | | | | | |
| EPC3550G-LF PCA Electronics, Inc. | EPC3126G-2-LF PCA Electronics, Inc. | EPC8QC100N Intel IC CONFIG DEVICE 8MBIT 100QFP | EPC2TI32N Intel IC CONFIG DEVICE 1.6MBIT 32TQFP | EPC8QI100N Intel IC CONFIG DEVICE 8MBIT 100QFP | EPC4QC100T Altera (Intel) |

Shipment

Delivery Time

In-stock items can be shipped within 24 hours. Some parts will be arranged for delivery within 1-2 days from the date all items arrive at our warehouse. And Allelco ships order once a day at about 17:00, except Sunday. Once the goods are shipped, the estimated delivery time depends on the shipping methods and Delivery destination. The table below shows are the logistic time for some common countries.

Delivery Cost

- > Use your express account for shipment if you have one.
 - > Use our account for the shipment. Refer to the table below for the approximate charges.
- (Different time frame / countries / package size has different price.)

Delivery Method

- > Global Common Shipment by DHL / UPS / FedEx / TNT / EMS / SF we support.
- > Others more shipping ways, please get in touch with your customer manager.

| Common Countries Logistic Time Reference | | |
|--|----------------|--------------------|
| Region | Country | Logistic Time(Day) |
| America | United States | 5 |
| | Brazil | 7 |
| Europe | Germany | 5 |
| | United Kingdom | 4 |
| | Italy | 5 |
| Oceania | Australia | 6 |
| | New Zealand | 7 |
| Asia | India | 6 |
| | Japan | 7 |
| Middle East | Israel | 6 |

| DHL & FedEx Shipment Charges Reference | |
|--|----------------------|
| Shipment charges(KG) | Reference DHL(USD\$) |
| 0.00kg-1.00kg | USD\$60.00 |
| 1.00kg-2.00kg | USD\$70.00 |
| 2.00kg-3.00kg | USD\$80.00 |

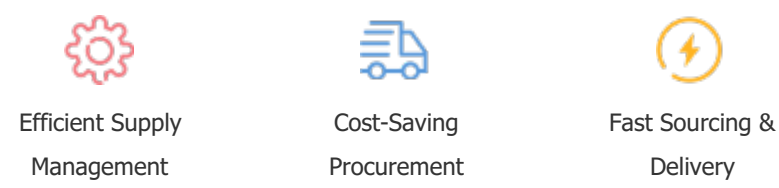
Note: The above table is for reference only. There may have some data bias for the uncontrollable factors.
Contact us if you have any questions.

Payment Support

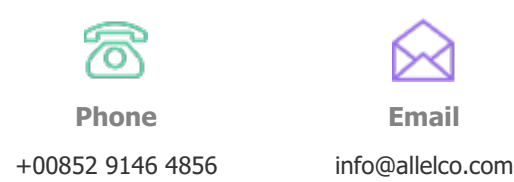
The payment method can be chosen from the methods shown below:
Wire Transfer (T/T, Bank Transfer), Western Union, Credit card, PayPal.



Your Faithful Supply Chain Partner -



Contact us if you have any questions.



Certifications & Memberships



[View More](#)

Contact us

Address: Flat/Rm C 13/F Harvard Commercial Building 105-111 Thomson Road, Wan Chai, Hong Kong
Phone: +00852 9146 4856
Fax: +00852 3010 8510
Email: info@Allelco.com