

Image may be representation.
See specifications for product details.



SI6963BDQ-T1-E3

Manufacturer Part Number	SI6963BDQ-T1-E3
Manufacturer	Vishay / Siliconix
Allelco Part Number	32D-SI6963BDQ-T1-E3
ECAD Model	Request Free CAD Models
Parts Description	MOSFET 2P-CH 20V 3.4A 8TSSOP
Package	8-TSSOP (0.173", 4.40mm Width)
Data sheet	Si6963BDQ.pdf
RoHs Status	ROHS3 Compliant

Get a Quote

SI6963BDQ-T1-E3 - Vishay Siliconix. New Original in Stock. Download Linear Technology SI6963BDQ-T1-E3 datasheet/specifications on AllelcoElec.com. Request a quote for SI6963BDQ-T1-E3, please send us email: info@allelco.com

Specifications

SI6963BDQ-T1-E3 Tech Specifications
SI6963BDQ-T1-E3 - Vishay Siliconix technical specifications, attributes, parameters

Product Attribute	Attribute Value	Product Attribute	Attribute Value
Manufacturer	Vishay / Siliconix	Operating Temperature	-55°C ~ 150°C (TJ)
Vgs(th) (Max) @ Id	1.4V @ 250µA	Mounting Type	Surface Mount
Technology	MOSFET (Metal Oxide)	Input Capacitance (Ciss) (Max) @ Vds	-
Supplier Device Package	8-TSSOP	Gate Charge (Qg) (Max) @ Vgs	11nC @ 4.5V
Series	-	FET Feature	Logic Level Gate
Rds On (Max) @ Id, Vgs	45mOhm @ 3.9A, 4.5V	Drain to Source Voltage (Vdss)	20V
Power - Max	830mW	Current - Continuous Drain (Id) @ 25°C	3.4A
Package / Case	8-TSSOP (0.173", 4.40mm Width)	Configuration	2 P-Channel (Dual)
Package	Tape & Reel (TR)	Base Product Number	SI6963

Parts with Similar Specifications

The three parts on the right have similar specifications to Vishay Siliconix SI6963BDQ-T1-E3

Product Attribute				
Part Number	SI6963BDQ-T1-E3	SI6966DQ-T1-GE3	SI6963DQ	SI6955ADQ-T1-E3
Manufacturer	Vishay Siliconix	Vishay Siliconix	Fairchild Semiconductor	Vishay Siliconix
Input Capacitance (Ciss) (Max) @ Vds	-	-	1015pF @ 10V	-
Operating Temperature	-55°C ~ 150°C (TJ)	-55°C ~ 150°C (TJ)	-55°C ~ 150°C (TJ)	-55°C ~ 150°C (TJ)
Gate Charge (Qg) (Max) @ Vgs	11nC @ 4.5V	20nC @ 4.5V	16nC @ 4.5V	8nC @ 5V
Current - Continuous Drain (Id) @ 25°C	3.4A	4A	3.8A (Ta)	2.5A
Package	Tape & Reel (TR)	Tape & Reel (TR)	Bulk	Tape & Reel (TR)
Technology	MOSFET (Metal Oxide)	MOSFET (Metal Oxide)	MOSFET (Metal Oxide)	MOSFET (Metal Oxide)
Base Product Number	SI6963	SI6966	SI6963	SI6955
Rds On (Max) @ Id, Vgs	45mOhm @ 3.9A, 4.5V	30mOhm @ 4.5A, 4.5V	43mOhm @ 3.8A, 4.5V	80mOhm @ 2.9A, 10V
Mounting Type	Surface Mount	Surface Mount	Surface Mount	Surface Mount
Package / Case	8-TSSOP (0.173", 4.40mm Width)	8-TSSOP (0.173", 4.40mm Width)	8-TSSOP (0.173", 4.40mm Width)	8-TSSOP (0.173", 4.40mm Width)
Power - Max	830mW	830mW	600mW (Ta)	830mW
Configuration	2 P-Channel (Dual)	2 N-Channel (Dual)	2 P-Channel (Dual)	2 P-Channel (Dual)
Series	-	TrenchFET®	PowerTrench®	TrenchFET®
Vgs(th) (Max) @ Id	1.4V @ 250µA	1.4V @ 250µA	1.5V @ 250µA	1V @ 250µA (Min)
Drain to Source Voltage (Vdss)	20V	20V	20V	30V
FET Feature	Logic Level Gate	Logic Level Gate	-	Logic Level Gate
Supplier Device Package	8-TSSOP	8-TSSOP	8-TSSOP	8-TSSOP

SI6963BDQ-T1-E3 Datasheet PDF

Download SI6963BDQ-T1-E3 pdf datasheets and Vishay Siliconix documentation for SI6963BDQ-T1-E3 - Vishay Siliconix.

Datasheets

[Si6963BDQ.pdf](#)

Environmental Information

[Material Compliance.pdf](#)

Customers Also Interested in

Recommended Products



SI6955DQ-T1

SILO



SI6966DQ-T1-GE3

Vishay Siliconix
MOSFET 2N-CH 20V 4A 8TSSOP



SI6966EDQ-T1

SILICONIX



SI6963DQ

Fairchild Semiconductor
P-CHANNEL MOSFET



SI6955ADQ-T1-E3

Vishay Siliconix
MOSFET 2P-CH 30V 2.5A 8-TSSOP



SI6955DQ-T1-E3

Electro-Films (EFI) / Vishay



SI6956DQ

Electro-Films (EFI) / Vishay



SI6966DQ-T1

Silicon Power



SI6954ADQ-TI-E3

Electro-Films (EFI) / Vishay



SI6965DQ-T1

SILICONIX



SI6954DQ-T1

SILICONIX



SI6963DQ-T1-E3

Electro-Films (EFI) / Vishay



SI6966DQ-T1-E3

Vishay Siliconix
MOSFET 2N-CH 20V 4A 8TSSOP



SI6954ADQ

VISHAT



SI6963DQ-T1

Electro-Films (EFI) / Vishay



SI6956DQ-T1

SILICONIX



SI6954ADQ-T1-E3

Vishay Siliconix
MOSFET 2N-CH 30V 3.1A 8TSSOP



SI6963BDQ-T1-GE3

Vishay Siliconix
MOSFET 2P-CH 20V 3.4A 8-TSSOP

Shipment

Delivery Time

In-stock items can be shipped within 24 hours. Some parts will be arranged for delivery within 1-2 days from the date all items arrive at our warehouse. And Allelco ships order once a day at about 17:00, except Sunday. Once the goods are shipped, the estimated delivery time depends on the shipping methods and Delivery destination. The table below shows are the logistic time for some common countries.

Delivery Cost

> Use your express account for shipment if you have one.

> Use our account for the shipment. Refer to the table below for the approximate charges.

(Different time frame / countries / package size has different price.)

Delivery Method

> Global Common Shipment by DHL / UPS / FedEx / TNT / EMS / SF we support.

> Others more shipping ways, please get in touch with your customer manager.

Common Countries Logistic Time Reference		
Region	Country	Logistic Time(Day)
America	United States	5
	Brazil	7
Europe	Germany	5
	United Kingdom	4
	Italy	5
Oceania	Australia	6
	New Zealand	7
Asia	India	6
	Japan	7
Middle East	Israel	6

DHL & FedEx Shipment Charges Reference	
Shipment charges(KG)	Reference DHL(USD\$)
0.00kg-1.00kg	USD\$60.00
1.00kg-2.00kg	USD\$70.00
2.00kg-3.00kg	USD\$80.00

Note: The above table is for reference only. There may have some data bias for the uncontrollable factors.

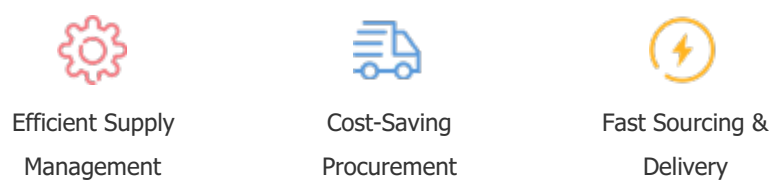
Contact us if you have any questions.

Payment Support

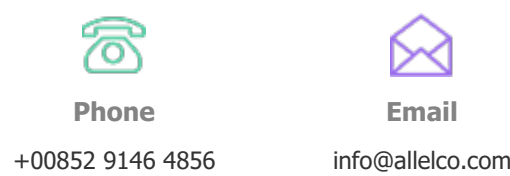
The payment method can be chosen from the methods shown below:
Wire Transfer (T/T, Bank Transfer), Western Union, Credit card,
PayPal.



Your Faithful Supply Chain Partner -



Contact us if you have any questions.



Certifications & Memberships



View More