

Image may be representation.  
See specifications for product details.



## EP3C80F484C6N

Manufacturer Part Number	<b>EP3C80F484C6N</b>
Manufacturer	<b>Intel</b>
Allelco Part Number	32D-EP3C80F484C6N
ECAD Model	PCB Symbol, Footprint & 3D Model
Parts Description	IC FPGA 295 I/O 484FBGA
Package	484-BGA
Data sheet	<a href="#">Virtual JTAG Megafuntion Guide.pdf</a> <a href="#">Cyclone III Device Handbook Vol2.pdf</a> <a href="#">Cyclone III Device Handbook Vol1.pdf</a> <a href="#">Cyclone III Family Overview.pdf</a>
RoHs Status	RoHS Compliant

**Get a Quote**

EP3C80F484C6N - Intel.New Original in Stock. Download Linear Technology EP3C80F484C6N datasheet/specifications on AllelcoElec.com.  
Request a quote for EP3C80F484C6N, please send us email: [info@allelco.com](mailto:info@allelco.com)

### Specifications

EP3C80F484C6N Tech Specifications  
EP3C80F484C6N - Intel technical specifications, attributes, parameters

Product Attribute	Attribute Value	Product Attribute	Attribute Value
Manufacturer	Intel	Operating Temperature	0°C ~ 85°C (TJ)
Voltage - Supply	1.15V ~ 1.25V	Number of Logic Elements/Cells	81264
Total RAM Bits	2810880	Number of LABs/CLBs	5079
Supplier Device Package	484-FBGA (23x23)	Number of I/O	295
Series	Cyclone® III	Mounting Type	Surface Mount
Package / Case	484-BGA	Base Product Number	EP3C80
Package	Tray		

### Parts with Similar Specifications

The three parts on the right have similar specifications to Intel EP3C80F484C6N

Product Attribute				
Part Number	EP3C80F484C6N	EP3C80F48417	EP3C5F256C8	EP3C5M164C7N
Manufacturer	Intel	Intel	Intel	Intel
Base Product Number	EP3C80	EP3C80	EP3C5	EP3C5
Mounting Type	Surface Mount	Surface Mount	Surface Mount	Surface Mount
Series	Cyclone® III	Cyclone® III	Cyclone® III	Cyclone® III
Voltage - Supply	1.15V ~ 1.25V	1.15V ~ 1.25V	1.15V ~ 1.25V	1.15V ~ 1.25V
Number of I/O	295	295	182	106
Total RAM Bits	2810880	2810880	423936	423936
Supplier Device Package	484-FBGA (23x23)	484-FBGA (23x23)	256-FBGA (17x17)	164-MBGA (8x8)
Package	Tray	Tray	Tray	Tray
Number of Logic Elements/Cells	81264	81264	5136	5136
Number of LABs/CLBs	5079	5079	321	321
Package / Case	484-BGA	484-BGA	256-LBGA	164-TFBGA
Operating Temperature	0°C ~ 85°C (TJ)	-40°C ~ 100°C (TJ)	0°C ~ 85°C (TJ)	0°C ~ 85°C (TJ)

### EP3C80F484C6N Datasheet PDF

Download EP3C80F484C6N pdf datasheets and Intel documentation for EP3C80F484C6N - Intel.

#### Datasheets

- [Virtual JTAG Megafuntion Guide.pdf](#)
- [Cyclone III Device Handbook Vol2.pdf](#)
- [Cyclone III Family Overview.pdf](#)

#### PCN Design/Specification

- [Mult Series Software Chgs 26/Mar/2020.pdf](#)
- [Substrate/Wire 10/Jun/2010.pdf](#)

#### PCN Packaging

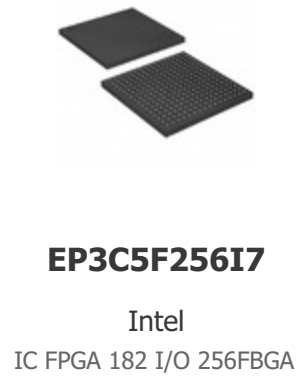
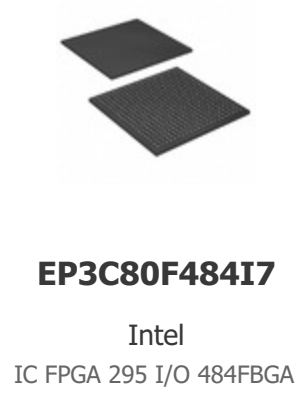
- [Mult Dev Label CHG 24/Jan/2020.pdf](#)
- [Mult Dev Label Chgs 24/Feb/2020.pdf](#)

#### HTML Datasheet

- [Cyclone III Device Handbook Vol2.pdf](#)
- [Cyclone III Device Handbook Vol1.pdf](#)

### Customers Also Interested in

#### Recommended Products



## Shipment

### Delivery Time

In-stock items can be shipped within 24 hours. Some parts will be arranged for delivery within 1-2 days from the date all items arrive at our warehouse. And Allelco ships order once a day at about 17:00, except Sunday. Once the goods are shipped, the estimated delivery time depends on the shipping methods and Delivery destination. The table below shows are the logistic time for some common countries.

### Delivery Cost

> Use your express account for shipment if you have one.

> Use our account for the shipment. Refer to the table below for the approximate charges.

(Different time frame / countries / package size has different price.)

### Delivery Method

> Global Common Shipment by DHL / UPS / FedEx / TNT / EMS / SF we support.

> Others more shipping ways, please get in touch with your customer manager.

Common Countries Logistic Time Reference		
Region	Country	Logistic Time(Day)
America	United States	5
	Brazil	7
Europe	Germany	5
	United Kingdom	4
	Italy	5
Oceania	Australia	6
	New Zealand	7
Asia	India	6
	Japan	7
Middle East	Israel	6

DHL & FedEx Shipment Charges Reference	
Shipment charges(KG)	Reference DHL(USD\$)
0.00kg-1.00kg	USD\$60.00
1.00kg-2.00kg	USD\$70.00
2.00kg-3.00kg	USD\$80.00

Note: The above table is for reference only. There may have some data bias for the uncontrollable factors.  
Contact us if you have any questions.

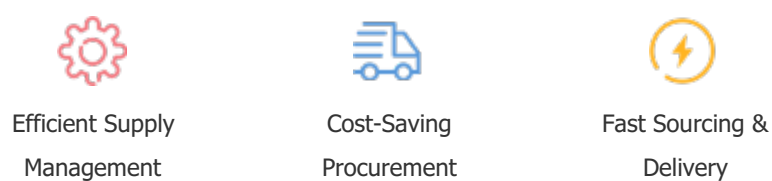
### Payment Support

The payment method can be chosen from the methods shown below:

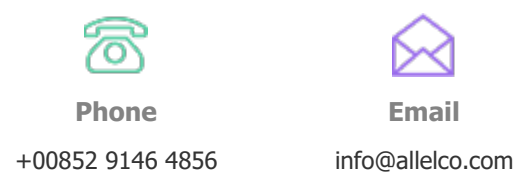
Wire Transfer (T/T, Bank Transfer), Western Union, Credit card, PayPal.



### Your Faithful Supply Chain Partner -



Contact us if you have any questions.



### Certifications & Memberships



[View More](#)