

Image may be representation.
See specifications for product details.



ADIN1200BCP32Z-R7

Manufacturer Part Number	ADIN1200BCP32Z-R7
Manufacturer	Analog Devices, Inc.
Allelco Part Number	32D-ADIN1200BCP32Z-R7
ECAD Model	Request Free CAD Models
Parts Description	IC TXRX FULL/HALF 4/4 32LFCSP
Package	32-WFQFN Exposed Pad, CSP
Data sheet	ADIN1200.pdf
RoHs Status	ROHS3 Compliant

Get a Quote

ADIN1200BCP32Z-R7 - Analog Devices Inc..New Original in Stock. Download Linear Technology ADIN1200BCP32Z-R7 datasheet/specifications on AllelcoElec.com.
Request a quote for ADIN1200BCP32Z-R7, please send us email: info@allelco.com

Specifications

ADIN1200BCP32Z-R7 Tech Specifications
ADIN1200BCP32Z-R7 - Analog Devices Inc. technical specifications, attributes, parameters

Product Attribute	Attribute Value	Product Attribute	Attribute Value
Manufacturer	Analog Devices, Inc.	Package	Tape & Reel (TR)
Voltage - Supply	1.71V ~ 1.89V, 2.25V ~ , 2.75V, 3.14V ~ 3.46V	Operating Temperature	-40°C ~ 85°C (TA)
Type	Transceiver	Number of Drivers/Receivers	4/4, 1/1
Supplier Device Package	32-LFCSP (5x5)	Mounting Type	Surface Mount
Series	-	Duplex	Full, Half
Protocol	Ethernet, IEEE 802.3, MII, RMII, PHY2	Data Rate	10Mbps, 100Mbps
Package / Case	32-WFQFN Exposed Pad, CSP	Base Product Number	ADIN1200

Parts with Similar Specifications

The three parts on the right have similar specifications to Analog Devices Inc. ADIN1200BCP32Z-R7

Product Attribute				
Part Number	ADIN1200BCP32Z-R7	ADIN1100CCPZ-R7	ADIN1300BCPZ-R7	ADIN1200BCP32Z
Manufacturer	Analog Devices Inc.	Analog Devices Inc.	Analog Devices Inc.	Analog Devices Inc.
Voltage - Supply	1.71V ~ 1.89V, 2.25V ~ , 2.75V, 3.14V ~ 3.46V	1V ~ 1.2V, 1.71V ~ 3.46V, 3.13V	1.71V ~ 1.89V, 2.25V ~ 2.75V, 3.14V ~ 3.46V	1.71V ~ 1.89V, 2.25V ~ 2.75V, 3.14V ~ 3.46V
Operating Temperature	-40°C ~ 85°C (TA)	-40°C ~ 105°C (TA)	-40°C ~ 105°C (TA)	-40°C ~ 85°C (TA)
Base Product Number	ADIN1200	-	ADIN1300	ADIN1200
Package / Case	32-WFQFN Exposed Pad, CSP	40-WFQFN Exposed Pad, CSP	40-WFQFN Exposed Pad, CSP	32-WFQFN Exposed Pad, CSP
Supplier Device Package	32-LFCSP (5x5)	40-LFCSP (6x6)	40-LFCSP-WQ (6x6)	32-LFCSP (5x5)
Mounting Type	Surface Mount	Surface Mount	Surface Mount	Surface Mount
Series	-	-	-	-
Protocol	Ethernet, IEEE 802.3, MII, RMII, PHY2	Ethernet	IEEE 802.3	Ethernet, IEEE 802.3, MII, RMII, PHY2
Type	Transceiver	Transceiver	Transceiver	Transceiver
Number of Drivers/Receivers	4/4, 1/1	1/1	4/4	4/4, 1/1
Duplex	Full, Half	Full, Half	Full, Half	Full, Half
Package	Tape & Reel (TR)	Tape & Reel (TR)	Tape & Reel (TR)	Tray
Data Rate	10Mbps, 100Mbps	10Mbps	10Mbps, 100Mbps, 1Gbps	10Mbps, 100Mbps

ADIN1200BCP32Z-R7 Datasheet PDF

Download ADIN1200BCP32Z-R7 pdf datasheets and Analog Devices Inc. documentation for ADIN1200BCP32Z-R7 - Analog Devices Inc..

Datasheets

[ADIN1200.pdf](#)

Other Related Documents

[Tape and Reel Packaging.pdf](#)

[Enabling Seamless Ethernet to the Field with 10BAS.pdf](#)

PCN Assembly/Origin

[Multiple Parts 05/Jul/2022.pdf](#)

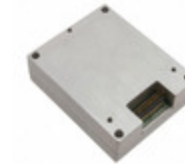
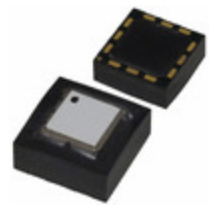
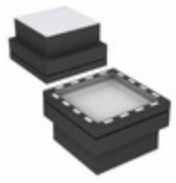
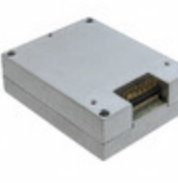
Customers Also Interested in

Recommended Products

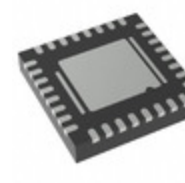
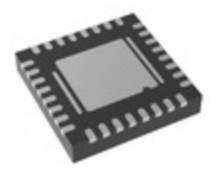
ADIN1100CCPZ-R7	ADI2909F	ADI9534B	ADIR4009	ADIS16006CCCZ	ADI2508
Analog Devices Inc. 10BASE-T1L PHY WITH 4 MDI	ANDWELL	ADI (Analog Devices, Inc.)	ADI (Analog Devices, Inc.)	Analog Devices Inc. ACCELEROMETER 5G SPI 12LGA	ANDWELL

**ADIS16135BMLZ**Analog Devices Inc.
MODULE GYRO W/CONN**ADIN1300BCPZ-R7**Analog Devices Inc.
IC TXRX FULL/HALF 4/4 40LFCSP**ADIS16130AMLZ**Analog Devices Inc.
MODULE GYRO RATE SENSOR 24LD**ADI01855**

ADMOTECH

**ADIS16133BMLZ**Analog Devices Inc.
GYRO SENSOR 1200DEG/S 5V 335HZ**ADIS16003CCCZ**Analog Devices Inc.
ACCELEROMETER 1.7G SPI 12LGA**ADIS16060BCCZ**Analog Devices Inc.
IC GYROSCOPE YAW RATE SPI
16LGA**ADIN1200BCP32Z**Analog Devices Inc.
IC TXRX FULL/HALF 4/4 32LFCSP**ADIS16136AMLZ**Analog Devices Inc.
GYROSCOPE DIGITAL 24MSM**ADI260CET**

ADMOTECH

**ADIN1200CCP32Z-R7**Analog Devices Inc.
IC TXRX FULL/HALF 4/4 32LFCSP**ADIN1200CCP32Z**Analog Devices Inc.
IC TXRX FULL/HALF 4/4 32LFCSP

Shipment

Delivery Time

In-stock items can be shipped within 24 hours. Some parts will be arranged for delivery within 1-2 days from the date all items arrive at our warehouse. And Allelco ships order once a day at about 17:00, except Sunday. Once the goods are shipped, the estimated delivery time depends on the shipping methods and Delivery destination. The table below shows are the logistic time for some common countries.

Delivery Cost

> Use your express account for shipment if you have one.

> Use our account for the shipment. Refer to the table below for the approximate charges.

(Different time frame / countries / package size has different price.)

Delivery Method

> Global Common Shipment by DHL / UPS / FedEx / TNT / EMS / SF we support.

> Others more shipping ways, please get in touch with your customer manager.

Common Countries Logistic Time Reference		
Region	Country	Logistic Time(Day)
America	United States	5
	Brazil	7
Europe	Germany	5
	United Kingdom	4
	Italy	5
Oceania	Australia	6
	New Zealand	7
Asia	India	6
	Japan	7
Middle East	Israel	6

DHL & FedEx Shipment Charges Reference	
Shipment charges(KG)	Reference DHL(USD\$)
0.00kg-1.00kg	USD\$60.00
1.00kg-2.00kg	USD\$70.00
2.00kg-3.00kg	USD\$80.00

Note: The above table is for reference only. There may have some data bias for the uncontrollable factors.

Contact us if you have any questions.

Payment Support

The payment method can be chosen from the methods shown below:

Wire Transfer (T/T, Bank Transfer), Western Union, Credit card, PayPal.



Your Faithful Supply Chain Partner -



Efficient Supply
Management



Cost-Saving
Procurement



Fast Sourcing &
Delivery

Contact us if you have any questions.



Phone

+00852 9146 4856



Email

info@allelco.com

Certifications & Memberships



[View More](#)



Contact us

Address: Flat/Rm C 13/F Harvard Commercial Building 105-111 Thomson Road, Wan Chai, Hong Kong

Phone: +00852 9146 4856

Fax: +00852 3010 8510

Email: info@Allelco.com

Copyright © 2012-2023 AllelcoElec.com. All rights reserved.