



Image may be representation.
See specifications for product details.



SM15T22A

Manufacturer Part Number	SM15T22A
Manufacturer	STMicroelectronics
Allelco Part Number	32D-SM15T22A
ECAD Model	PCB Symbol, Footprint & 3D Model
Parts Description	TVS DIODE 18.8VWM 39.3VC SMC
Package	DO-214AB, SMC
Data sheet	SM15T.pdf
RoHs Status	ROHS3 Compliant

Get a Quote

SM15T22A - STMicroelectronics.New Original in Stock. Download Linear Technology SM15T22A datasheet/specifications on AllelcoElec.com.
Request a quote for SM15T22A, please send us email: info@allelco.com

Specifications

SM15T22A Tech Specifications

SM15T22A - STMicroelectronics technical specifications, attributes, parameters

Product Attribute	Attribute Value	Product Attribute	Attribute Value
Manufacturer	STMicroelectronics	Power - Peak Pulse	1500W (1.5kW)
Voltage - Reverse Standoff (Typ)	18.8V	Package / Case	DO-214AB, SMC
Voltage - Clamping (Max) @ Ipp	39.3V	Package	Tape & Reel (TR)
Voltage - Breakdown (Min)	20.9V	Operating Temperature	-55°C ~ 150°C (TJ)
Unidirectional Channels	1	Mounting Type	Surface Mount
Type	Zener	Current - Peak Pulse (10/1000µs)	254A (8/20µs)
Supplier Device Package	SMC	Capacitance @ Frequency	-
Series	SM15T, TRANSIL™	Base Product Number	SM15T22
Power Line Protection	No	Applications	General Purpose

Parts with Similar Specifications

The three parts on the right have similar specifications to STMicroelectronics SM15T22A

Product Attribute				
Part Number	SM15T22A	SM15T22AY	SM15T22A-E3/9AT	SM15T200A
Manufacturer	STMicroelectronics	STMicroelectronics	Vishay General Semiconductor - Diodes Division	STMicroelectronics
Supplier Device Package	SMC	SMC	DO-214AB (SMCJ)	SMC
Power Line Protection	No	No	No	No
Applications	General Purpose	Automotive	General Purpose	General Purpose
Operating Temperature	-55°C ~ 150°C (TJ)	-40°C ~ 150°C (TJ)	-65°C ~ 150°C (TJ)	-55°C ~ 150°C (TJ)
Type	Zener	Zener	Zener	Zener
Package / Case	DO-214AB, SMC	DO-214AB, SMC	DO-214AB, SMC	DO-214AB, SMC
Current - Peak Pulse (10/1000µs)	254A (8/20µs)	254A (8/20µs)	49A	28A (8/20µs)
Base Product Number	SM15T22	SM15T22	SM15T22	SM15T200
Unidirectional Channels	1	1	1	1
Capacitance @ Frequency	-	-	-	-
Voltage - Breakdown (Min)	20.9V	20.9V	20.9V	190V
Voltage - Reverse Standoff (Typ)	18.8V	18.8V	18.8V	171V
Power - Peak Pulse	1500W (1.5kW)	1500W (1.5kW)	1500W (1.5kW)	1500W (1.5kW)
Series	SM15T, TRANSIL™	Automotive, AEC-Q101, SM15TY, TRANSIL™	SM15T, TransZorb®	SM15T, TRANSIL™
Mounting Type	Surface Mount	Surface Mount	Surface Mount	Surface Mount
Package	Tape & Reel (TR)	Tape & Reel (TR)	Tape & Reel (TR)	Tape & Reel (TR)
Voltage - Clamping (Max) @ Ipp	39.3V	39.3V	30.6V	353V

SM15T22A Datasheet PDF

Download SM15T22A pdf datasheets and STMicroelectronics documentation for SM15T22A - STMicroelectronics.

HTML Datasheet

SM15T.pdf

Other Related Documents

SM15T View All Specifications.pdf

Customers Also Interested in

Recommended Products

					
SM15T22AY STMicroelectronics TVS DIODE 18.8VWM 39.3VC SMC	SM15T22A-E3/9AT Vishay General Semiconductor - Diodes Division TVS DIODE 18.8VWM 30.6VC DO214AB	SM15T200A STMicroelectronics TVS DIODE 171VWM 353VC SMC	SM15T22A-E3/57T Vishay General Semiconductor - Diodes Division TVS DIODE 18.8VWM 30.6VC DO214AB	SM15T22A-TR STMicroelectronics	SM15T20CA SUNMATE
					
SM15T22CA-E3/57 Electro-Films (EFI) / Vishay	SM15T22CA STMicroelectronics TVS DIODE 18.8VWM 39.3VC SMC	SM15T220CA-E3/9AT Vishay General Semiconductor - Diodes Division TVS DIODE 188VWM 328VC DO214AB	SM15T200CA STMicroelectronics TVS DIODE 171VWM 353VC SMC	SM15T24A STMicroelectronics TVS DIODE 20.5VWM 42.8VC SMC	SM15T220CA-TR STMicroelectronics
					
SM15T220CA STMicroelectronics TVS DIODE 188VWM 388VC SMC	SM15T1G onsemi TVS DIODE 15VWM 24VC SOT23-3	SM15T20A SUNMATE	SM15T22A-E3/57 Electro-Films (EFI) / Vishay	SM15T220A STMicroelectronics TVS DIODE 188VWM 388VC SMC	SM15T18CA-TR STMicroelectronics

Shipment

Delivery Time

In-stock items can be shipped within 24 hours. Some parts will be arranged for delivery within 1-2 days from the date all items arrive at our warehouse. And Allelco ships order once a day at about 17:00, except Sunday. Once the goods are shipped, the estimated delivery time depends on the shipping methods and Delivery destination. The table below shows are the logistic time for some common countries.

Delivery Cost

> Use your express account for shipment if you have one.

> Use our account for the shipment. Refer to the table below for the approximate charges.

(Different time frame / countries / package size has different price.)

Delivery Method

> Global Common Shipment by DHL / UPS / FedEx / TNT / EMS / SF we support.

> Others more shipping ways, please get in touch with your customer manager.

Common Countries Logistic Time Reference		
Region	Country	Logistic Time(Day)
America	United States	5
	Brazil	7
Europe	Germany	5
	United Kingdom	4
	Italy	5
Oceania	Australia	6
	New Zealand	7
Asia	India	6
	Japan	7
Middle East	Israel	6

DHL & FedEx Shipment Charges Reference	
Shipment charges(KG)	Reference DHL(USD\$)
0.00kg-1.00kg	USD\$60.00
1.00kg-2.00kg	USD\$70.00
2.00kg-3.00kg	USD\$80.00

Note: The above table is for reference only. There may have some data bias for the uncontrollable factors.

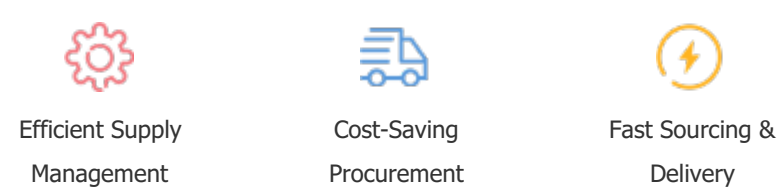
Contact us if you have any questions.

Payment Support

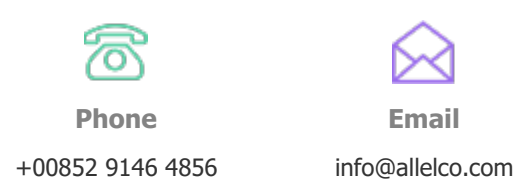
The payment method can be chosen from the methods shown below:
Wire Transfer (T/T, Bank Transfer), Western Union, Credit card, PayPal.



Your Faithful Supply Chain Partner -



Contact us if you have any questions.



Certifications & Memberships



[View More](#)