

Image may be representation.  
See specifications for product details.



## NCS2372DWR2G

Manufacturer Part Number	<b>NCS2372DWR2G</b>
Manufacturer	<b>onsemi</b>
Allelco Part Number	32D-NCS2372DWR2G
ECAD Model	PCB Symbol, Footprint & 3D Model
Parts Description	IC OPAMP GP 1 CIRCUIT 16SOIC
Package	16-SOIC (0.295", 7.50mm Width)
Data sheet	<b>NCS2372.pdf</b>
RoHs Status	<b>ROHS3 Compliant</b>

**Get a Quote**

NCS2372DWR2G - onsemi.New Original in Stock. Download Linear Technology NCS2372DWR2G datasheet/specifications on AllelcoElec.com.  
Request a quote for NCS2372DWR2G, please send us email: [info@allelco.com](mailto:info@allelco.com)

### Specifications

NCS2372DWR2G Tech Specifications

NCS2372DWR2G - onsemi technical specifications, attributes, parameters

Product Attribute	Attribute Value	Product Attribute	Attribute Value
Manufacturer	onsemi	Number of Circuits	1
Voltage - Input Offset	1 mV	Mounting Type	Surface Mount
Supplier Device Package	16-SOIC	Gain Bandwidth Product	1.4 MHz
Slew Rate	1.4V/μs	Current - Supply	8mA
Series	-	Current - Output / Channel	1 A
Package / Case	16-SOIC (0.295", 7.50mm Width)	Current - Input Bias	100 nA
Package	Tape & Reel (TR)	Base Product Number	NCS2372
Output Type	-	Amplifier Type	General Purpose
Operating Temperature	-40°C ~ 125°C		

### Parts with Similar Specifications

The three parts on the right have similar specifications to onsemi NCS2372DWR2G

Product Attribute				
Part Number	NCS2372DWR2G	NCS2333DMR2G	NCS2502SNT1G	NCS2333MUTBG
Manufacturer	onsemi	onsemi	onsemi	onsemi
Amplifier Type	General Purpose	Zero-Drift	Current Feedback	Zero-Drift
Package / Case	16-SOIC (0.295", 7.50mm Width)	8-TSSOP, 8-MSOP (0.118", 3.00mm Width)	SOT-23-6 Thin, TSOT-23-6	8-UDFN Exposed Pad
Series	-	Zero-Drift	-	Zero-Drift
Number of Circuits	1	2	1	2
Base Product Number	NCS2372	NCS2333	NCS2502	NCS2333
Supplier Device Package	16-SOIC	8-MSOP	6-TSOP	8-UDFN (2x2)
Voltage - Input Offset	1 mV	6 μV	8 mV	6 μV
Slew Rate	1.4V/μs	0.15V/μs	230V/μs	0.15V/μs
Current - Input Bias	100 nA	60 pA	3 μA	60 pA
Current - Supply	8mA	21μA (x2 Channels)	650μA	21μA (x2 Channels)
Mounting Type	Surface Mount	Surface Mount	Surface Mount	Surface Mount
Gain Bandwidth Product	1.4 MHz	270 kHz	-	270 kHz
Operating Temperature	-40°C ~ 125°C	-40°C ~ 125°C (TA)	-40°C ~ 85°C	-40°C ~ 125°C (TA)
Package	Tape & Reel (TR)	Tape & Reel (TR)	Tape & Reel (TR)	Tape & Reel (TR)
Current - Output / Channel	1 A	5 mA	80 mA	5 mA
Output Type	-	Rail-to-Rail	-	Rail-to-Rail

### NCS2372DWR2G Datasheet PDF

Download NCS2372DWR2G pdf datasheets and onsemi documentation for NCS2372DWR2G - onsemi.

#### Datasheets

[NCS2372.pdf](#)

#### Environmental Information

[onsemi REACH.pdf](#)

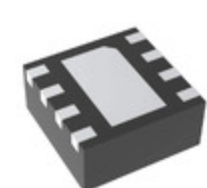
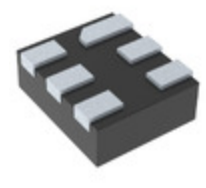
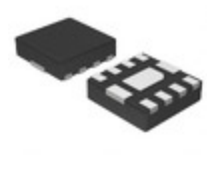
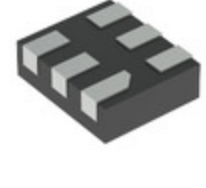
[onsemi RoHS.pdf](#)

#### PCN Assembly/Origin

[Wire Change 14/Dec/2022.pdf](#)

### Customers Also Interested in

#### Recommended Products

**NCS2553DR2G**onsemi  
IC AMP FILTER 8SOIC**NCS2250SN2T1G**onsemi  
IC COMPARATOR 1 GEN PUR 5TSOP**NCS2333DMR2G**onsemi  
IC OPAMP ZER-DRIFT 2CIRC 8MSOP**NCS2502SNT1G**onsemi  
IC OPAMP CFA 1 CIRCUIT 6TSOP**NCS2333MUTBG**onsemi  
IC OPAMP ZERO-DRIFT 2 CIRC 8UDFN**NCS2211MNTXG**onsemi  
IC AMP CLASS AB MONO 1.5W 8DFN**NCS2535DTBR2G**onsemi  
IC OPAMP CFA 3 CIRCUIT 16TSSOP**NCS2501SNT1G**onsemi  
IC OPAMP CFA 1 CIRCUIT 6TSOP**NCS2540DTBR2G**onsemi  
IC OPAMP VFB 3 CIRCUIT 16TSSOP**NCS2300MUTBG**onsemi  
IC DETECTION SWITCH 6UDFN**NCS2333DR2G**onsemi  
IC OPAMP ZERO-DRIFT 2 CIRC 8SOIC**NCS2500SNT1G**onsemi  
IC OPAMP CFA 1 CIRCUIT 5TSOP**NCS2220AMUT1G**onsemi  
IC COMPARATOR 2 GEN PUR 8UDFN**NCS2510SNT1G**onsemi  
IC OPAMP CFA 1 CIRCUIT 5TSOP**NCS2530DTBR2G**onsemi  
IC OPAMP CFA 3 CIRCUIT 16TSSOP**NCS2300MUTAG**onsemi  
IC DETECTION SWITCH 6UDFN**NCS2553DG**onsemi  
IC AMP FILTER 8SOIC**NCS2211DR2G**onsemi  
IC AMP CLASS AB MONO 1.5W 8SOIC

## Shipment

### Delivery Time

In-stock items can be shipped within 24 hours. Some parts will be arranged for delivery within 1-2 days from the date all items arrive at our warehouse. And Allelco ships order once a day at about 17:00, except Sunday. Once the goods are shipped, the estimated delivery time depends on the shipping methods and Delivery destination. The table below shows are the logistic time for some common countries.

### Delivery Cost

> Use your express account for shipment if you have one.

> Use our account for the shipment. Refer to the table below for the approximate charges.

(Different time frame / countries / package size has different price.)

### Delivery Method

> Global Common Shipment by DHL / UPS / FedEx / TNT / EMS / SF we support.

> Others more shipping ways, please get in touch with your customer manager.

**Common Countries Logistic Time Reference**

Region	Country	Logistic Time(Day)
America	United States	5
	Brazil	7
Europe	Germany	5
	United Kingdom	4
	Italy	5
Oceania	Australia	6
	New Zealand	7
Asia	India	6
	Japan	7
Middle East	Israel	6

**DHL & FedEx Shipment Charges Reference**

Shipment charges(KG)	Reference DHL(USD\$)
0.00kg-1.00kg	USD\$60.00
1.00kg-2.00kg	USD\$70.00
2.00kg-3.00kg	USD\$80.00

Note: The above table is for reference only. There may have some data bias for the uncontrollable factors.  
Contact us if you have any questions.

## Payment Support

The payment method can be chosen from the methods shown below:

Wire Transfer (T/T, Bank Transfer), Western Union, Credit card, PayPal.



## Your Faithful Supply Chain Partner -



Efficient Supply Management



Cost-Saving Procurement



Fast Sourcing & Delivery

Contact us if you have any questions.



Phone

+00852 9146 4856



Email

info@allelco.com

## Certifications & Memberships



[View More](#)