

Image may be representation.  
See specifications for product details.



## ADG1433YCPZ-REEL7

Manufacturer Part Number	<b>ADG1433YCPZ-REEL7</b>
Manufacturer	<b>Analog Devices, Inc.</b>
Allelco Part Number	32D-ADG1433YCPZ-REEL7
ECAD Model	PCB Symbol, Footprint & 3D Mode
Parts Description	IC SWITCH SPDTX3 4.7OHM 16LFCSP
Package	16-VQFN Exposed Pad, CSP
Data sheet	<b>ADG1433,34.pdf</b>
RoHs Status	<b>ROHS3 Compliant</b>

**Get a Quote**

ADG1433YCPZ-REEL7 - Analog Devices Inc..New Original in Stock. Download Linear Technology ADG1433YCPZ-REEL7 datasheet/specifications on AllelcoElec.com. Request a quote for ADG1433YCPZ-REEL7, please send us email: [info@allelco.com](mailto:info@allelco.com)

### Specifications

ADG1433YCPZ-REEL7 Tech Specifications  
ADG1433YCPZ-REEL7 - Analog Devices Inc. technical specifications, attributes, parameters

Product Attribute	Attribute Value	Product Attribute	Attribute Value
Manufacturer	Analog Devices, Inc.	Number of Circuits	3
Voltage - Supply, Single (V+)	5V ~ 16.5V	Multiplexer/Demultiplexer Circuit	2:1
Voltage - Supply, Dual (V±)	±4.5V ~ 16.5V	Mounting Type	Surface Mount
Switch Time (Ton, Toff) (Max)	170ns, 75ns	Current - Leakage (IS(off)) (Max)	300pA
Switch Circuit	SPDT	Crosstalk	-70dB @ 1MHz
Supplier Device Package	16-LFCSP-VQ (4x4)	Charge Injection	-50pC
Series	-	Channel-to-Channel Matching (ΔRon)	500mOhm
Package / Case	16-VQFN Exposed Pad, CSP	Channel Capacitance (CS(off), CD(off))	12pF, 22pF
Package	Tape & Reel (TR)	Base Product Number	ADG1433
Operating Temperature	-40°C ~ 125°C (TA)	-3db Bandwidth	200MHz
On-State Resistance (Max)	4.7Ohm		

### Parts with Similar Specifications

The three parts on the right have similar specifications to Analog Devices Inc. ADG1433YCPZ-REEL7

Product Attribute				
Part Number	ADG1433YCPZ-REEL7	<b>ADG1433YCPZ-REEL</b>	<b>ADG1436YRUZ</b>	<b>ADG1423BCPZ-REEL7</b>
Manufacturer	Analog Devices Inc.	Analog Devices Inc.	Analog Devices Inc.	Analog Devices Inc.
Crosstalk	-70dB @ 1MHz	-70dB @ 1MHz	-80dB @ 100kHz	-74dB @ 1MHz
Series	-	-	-	-
Channel Capacitance (CS(off), CD(off))	12pF, 22pF	12pF, 22pF	23pF, 50pF	18pF, 22pF
Multiplexer/Demultiplexer Circuit	2:1	2:1	2:1	1:1
Voltage - Supply, Single (V+)	5V ~ 16.5V	5V ~ 16.5V	5V ~ 16.5V	5V ~ 16.5V
Current - Leakage (IS(off)) (Max)	300pA	300pA	550pA	500pA
Package / Case	16-VQFN Exposed Pad, CSP	16-VQFN Exposed Pad, CSP	16-TSSOP (0.173", 4.40mm Width)	10-VDFDN Exposed Pad, CSP
Operating Temperature	-40°C ~ 125°C (TA)	-40°C ~ 125°C (TA)	-40°C ~ 125°C (TA)	-40°C ~ 125°C (TA)
Supplier Device Package	16-LFCSP-VQ (4x4)	16-LFCSP-VQ (4x4)	16-TSSOP	10-LFCSP-WD (3x3)
Number of Circuits	3	3	2	2
Package	Tape & Reel (TR)	Tape & Reel (TR)	Tube	Tape & Reel (TR)
Charge Injection	-50pC	-50pC	-20pC	-5pC
Voltage - Supply, Dual (V±)	±4.5V ~ 16.5V	±4.5V ~ 16.5V	±4.5V ~ 16.5V	±4.5V ~ 16.5V
On-State Resistance (Max)	4.7Ohm	4.7Ohm	1.8Ohm	2.4Ohm
-3db Bandwidth	200MHz	200MHz	110MHz	180MHz
Channel-to-Channel Matching (ΔRon)	500mOhm	500mOhm	100mOhm	20mOhm
Base Product Number	ADG1433	ADG1433	ADG1436	ADG1423
Switch Circuit	SPDT	SPDT	SPDT	SPST - NO/NC
Switch Time (Ton, Toff) (Max)	170ns, 75ns	170ns, 75ns	120ns, 130ns	145ns, 145ns
Mounting Type	Surface Mount	Surface Mount	Surface Mount	Surface Mount

### ADG1433YCPZ-REEL7 Datasheet PDF

Download ADG1433YCPZ-REEL7 pdf datasheets and Analog Devices Inc. documentation for ADG1433YCPZ-REEL7 - Analog Devices Inc..

#### Datasheets

[ADG1433,34.pdf](#)

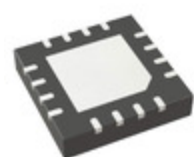
#### Other Related Documents

[Tape and Reel Packaging.pdf](#)

 Assembly Site Transfer 03/Feb/2014.pdf

## Customers Also Interested in

### Recommended Products



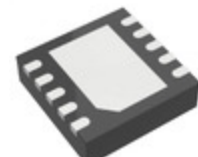
**ADG1433YCPZ-REEL**

Analog Devices Inc.  
IC SWITCH SPDTX3 4.7OHM  
16LFCSP



**ADG1436YRUZ**

Analog Devices Inc.  
IC SWITCH SPDTX2 1.8OHM  
16TSSOP



**ADG1423BCPZ-REEL7**

Analog Devices Inc.  
IC SW SPST-NO/NCX2 2.4OHM  
10CSP



**ADG1421BRMZ**

Analog Devices Inc.  
IC SW SPST-NOX2 2.4OHM 10MSOP



**ADG1434YRUZ**

Analog Devices Inc.  
IC SWITCH SPDTX4 4.7OHM  
20TSSOP



**ADG1433YRUZ-REEL7**

Analog Devices Inc.  
IC SWITCH SPDTX3 4.7OHM  
16TSSOP



**ADG1421BRMZ-REEL7**

Analog Devices Inc.  
IC SW SPST-NOX2 2.4OHM 10MSOP



**ADG1433YRUZ**

Analog Devices Inc.  
IC SWITCH SPDTX3 4.7OHM  
16TSSOP



**ADG1421BRM**

ADI (Analog Devices, Inc.)



**ADG1422BRMZ**

Analog Devices Inc.  
IC SW SPST-NCX2 2.4OHM 10MSOP



**ADG1423BRMZ-REEL7**

Analog Devices Inc.  
IC SW SPST-NO/NCX2 2.4OHM  
10MSOP



**ADG1422BCPZ**

ADI (Analog Devices, Inc.)



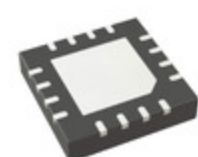
**ADG1422BRMZ-REEL7**

Analog Devices Inc.  
IC SW SPST-NCX2 2.4OHM 10MSOP



**ADG1434YRUZ-REEL7**

Analog Devices Inc.  
IC SWITCH SPDTX4 4.7OHM  
20TSSOP



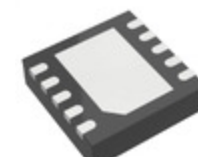
**ADG1436YCPZ-REEL7**

Analog Devices Inc.  
IC SWITCH SPDTX2 1.8OHM  
16LFCSP



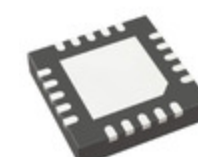
**ADG1434YRUZ-REEL**

Analog Devices Inc.  
IC SWITCH SPDTX4 4.7OHM  
20TSSOP



**ADG1422BCPZ-REEL7**

Analog Devices Inc.  
IC SW SPST-NCX2 2.4OHM 10LFCSP



**ADG1434YCPZ-REEL7**

Analog Devices Inc.  
IC SWITCH SPDTX4 4.7OHM  
20LFCSP

## Shipment

### Delivery Time

In-stock items can be shipped within 24 hours. Some parts will be arranged for delivery within 1-2 days from the date all items arrive at our warehouse. And Allelco ships order once a day at about 17:00, except Sunday. Once the goods are shipped, the estimated delivery time depends on the shipping methods and Delivery destination. The table below shows are the logistic time for some common countries.

### Delivery Cost

- > Use your express account for shipment if you have one.
  - > Use our account for the shipment. Refer to the table below for the approximate charges.
- (Different time frame / countries / package size has different price.)

### Delivery Method

- > Global Common Shipment by DHL / UPS / FedEx / TNT / EMS / SF we support.
- > Others more shipping ways, please get in touch with your customer manager.

Common Countries Logistic Time Reference

Region	Country	Logistic Time(Day)
America	United States	5
	Brazil	7
Europe	Germany	5
	United Kingdom	4
	Italy	5
Oceania	Australia	6
	New Zealand	7
Asia	India	6
	Japan	7
Middle East	Israel	6

DHL & FedEx Shipment Charges Reference

Shipment charges(KG)	Reference DHL(USD\$)
0.00kg-1.00kg	USD\$60.00
1.00kg-2.00kg	USD\$70.00
2.00kg-3.00kg	USD\$80.00

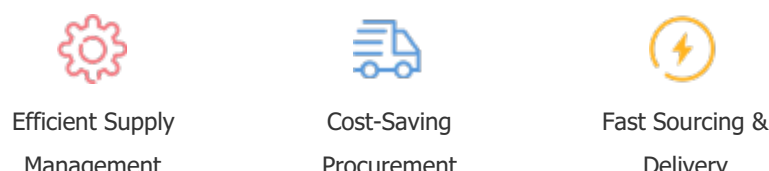
Note: The above table is for reference only. There may have some data bias for the uncontrollable factors.  
Contact us if you have any questions.

### Payment Support

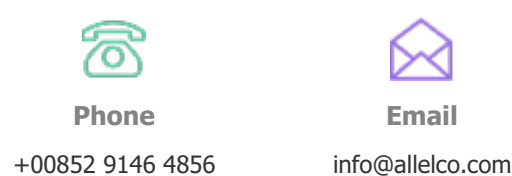
The payment method can be chosen from the methods shown below:  
Wire Transfer (T/T, Bank Transfer), Western Union, Credit card,  
PayPal.



### Your Faithful Supply Chain Partner -



Contact us if you have any questions.



### Certifications & Memberships



View More

### Contact us

Address: Flat/Rm C 13/F Harvard Commercial Building 105-111 Thomson Road, Wan Chai, Hong Kong  
Phone: +00852 9146 4856  
Fax: +00852 3010 8510  
Email: info@Allelco.com