

Image may be representation.
See specifications for product details.



EP4SGX530NF45I3N

Manufacturer Part Number **EP4SGX530NF45I3N**

Manufacturer **Intel**

Allelco Part Number **32D-EP4SGX530NF45I3N**

ECAD Model [Request Free CAD Models](#)

Parts Description **IC FPGA 920 I/O 1932FBGA**

Package **1932-BBGA, FCBGA**

Data sheet [Virtual JTAG Megafuntion Guide.pdf](#)

[Stratix IV Device Handbook Vol.4.pdf](#)

[Stratix IV Devices.pdf](#)

RoHs Status **RoHS Compliant**

[Get a Quote](#)

EP4SGX530NF45I3N - Intel.New Original in Stock. Download Linear Technology EP4SGX530NF45I3N datasheet/specifications on AllelcoElec.com.
Request a quote for EP4SGX530NF45I3N, please send us email: info@allelco.com

Specifications

EP4SGX530NF45I3N Tech Specifications
EP4SGX530NF45I3N - Intel technical specifications, attributes, parameters

Product Attribute	Attribute Value	Product Attribute	Attribute Value
Manufacturer	Intel	Operating Temperature	-40°C ~ 100°C (TJ)
Voltage - Supply	0.87V ~ 0.93V	Number of Logic Elements/Cells	531200
Total RAM Bits	28033024	Number of LABs/CLBs	21248
Supplier Device Package	1932-FBGA, FC (45x45)	Number of I/O	920
Series	Stratix® IV GX	Mounting Type	Surface Mount
Package / Case	1932-BBGA, FCBGA	Base Product Number	EP4SGX530
Package	Tray		

Parts with Similar Specifications

The three parts on the right have similar specifications to Intel EP4SGX530NF45I3N

Product Attribute				
Part Number	EP4SGX530NF45I3N	EP4SGX530NF45C2N	EP4SGX530KH40C2N	EP4SGX70DF29C2XN
Manufacturer	Intel	Intel	Intel	Intel
Series	Stratix® IV GX	Stratix® IV GX	Stratix® IV GX	Stratix® IV GX
Package	Tray	Tray	Tray	Tray
Operating Temperature	-40°C ~ 100°C (TJ)	0°C ~ 85°C (TJ)	0°C ~ 85°C (TJ)	0°C ~ 85°C (TJ)
Number of I/O	920	920	744	372
Base Product Number	EP4SGX530	EP4SGX530	EP4SGX530	EP4SGX70
Voltage - Supply	0.87V ~ 0.93V	0.87V ~ 0.93V	0.87V ~ 0.93V	0.87V ~ 0.93V
Total RAM Bits	28033024	28033024	28033024	7564880
Package / Case	1932-BBGA, FCBGA	1932-BBGA, FCBGA	1517-BBGA, FCBGA	780-BBGA, FCBGA
Mounting Type	Surface Mount	Surface Mount	Surface Mount	Surface Mount
Supplier Device Package	1932-FBGA, FC (45x45)	1932-FBGA, FC (45x45)	1517-HBGA (42.5x42.5)	780-FBGA (29x29)
Number of LABs/CLBs	21248	21248	21248	2904
Number of Logic Elements/Cells	531200	531200	531200	72600

EP4SGX530NF45I3N Datasheet PDF

Download EP4SGX530NF45I3N pdf datasheets and Intel documentation for EP4SGX530NF45I3N - Intel.

Datasheets



[Virtual JTAG Megafuntion Guide.pdf](#)



[Stratix IV Device Handbook Vol.4.pdf](#)



[Stratix IV Devices.pdf](#)

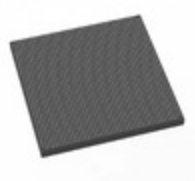
Errata



[Stratix IV GX Errata.pdf](#)

Customers Also Interested in

Recommended Products



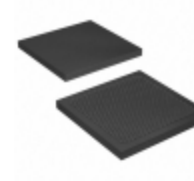
EP4SGX530NF45C2N
Intel
IC FPGA 920 I/O 1932FBGA



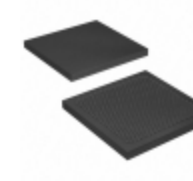
EP4SGX530KH40C2N
Intel
IC FPGA 744 I/O 1517HBGA



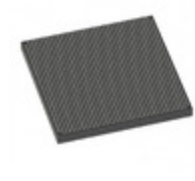
EP4SGX70DF29C2XN
Intel
IC FPGA 372 I/O 780FBGA



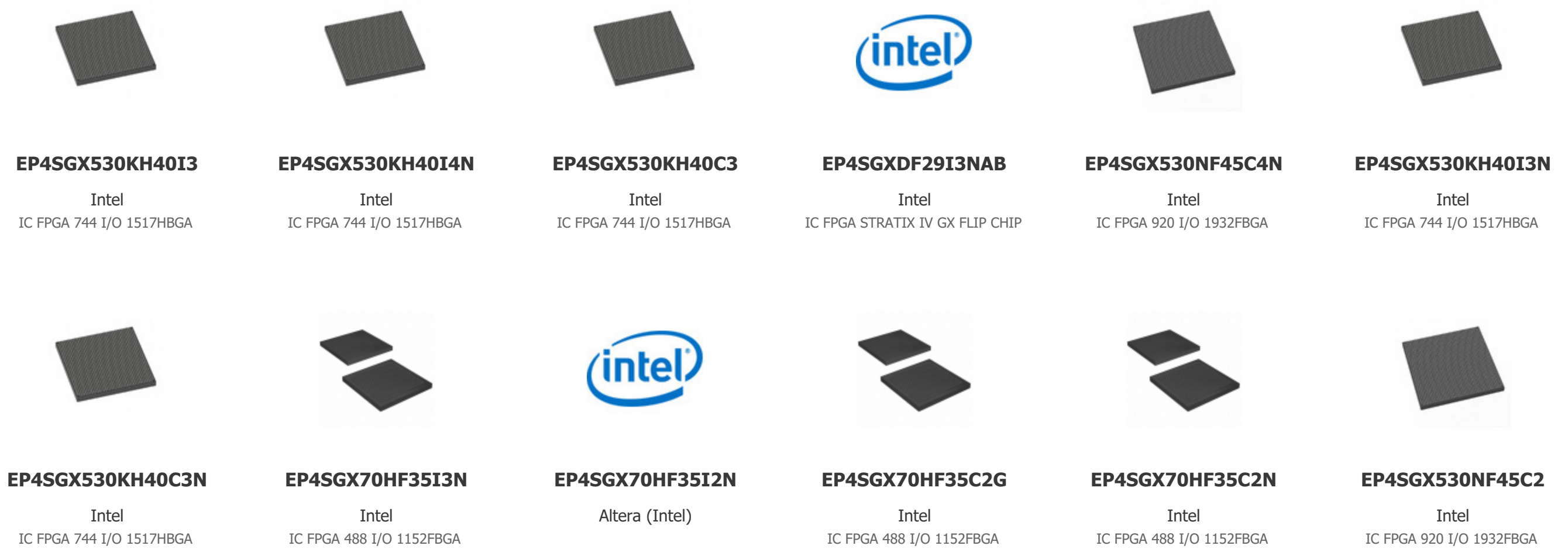
EP4SGX70HF35C3N
Intel
IC FPGA 488 I/O 1152FBGA



EP4SGX70HF35C4N
Intel
IC FPGA 488 I/O 1152FBGA



EP4SGX530KH40C4N
Intel
IC FPGA 744 I/O 1517HBGA



Shipment

Delivery Time

In-stock items can be shipped within 24 hours. Some parts will be arranged for delivery within 1-2 days from the date all items arrive at our warehouse. And Allelco ships order once a day at about 17:00, except Sunday. Once the goods are shipped, the estimated delivery time depends on the shipping methods and Delivery destination. The table below shows are the logistic time for some common countries.

Delivery Cost

> Use your express account for shipment if you have one.

> Use our account for the shipment. Refer to the table below for the approximate charges.

(Different time frame / countries / package size has different price.)

Delivery Method

> Global Common Shipment by DHL / UPS / FedEx / TNT / EMS / SF we support.

> Others more shipping ways, please get in touch with your customer manager.

Common Countries Logistic Time Reference		
Region	Country	Logistic Time(Day)
America	United States	5
	Brazil	7
Europe	Germany	5
	United Kingdom	4
	Italy	5
Oceania	Australia	6
	New Zealand	7
Asia	India	6
	Japan	7
Middle East	Israel	6

DHL & FedEx Shipment Charges Reference	
Shipment charges(KG)	Reference DHL(USD\$)
0.00kg-1.00kg	USD\$60.00
1.00kg-2.00kg	USD\$70.00
2.00kg-3.00kg	USD\$80.00

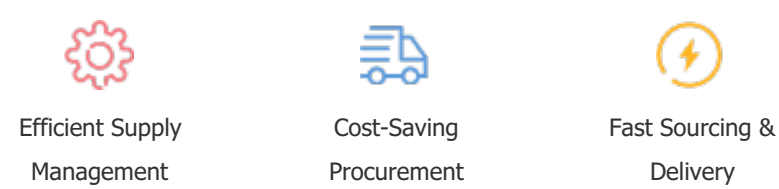
Note: The above table is for reference only. There may have some data bias for the uncontrollable factors.
Contact us if you have any questions.

Payment Support

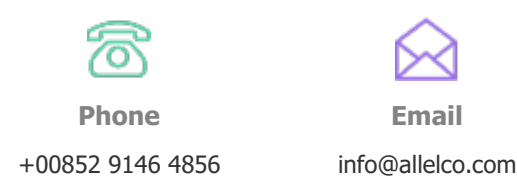
The payment method can be chosen from the methods shown below:
Wire Transfer (T/T, Bank Transfer), Western Union, Credit card, PayPal.



Your Faithful Supply Chain Partner -



Contact us if you have any questions.



Certifications & Memberships



[View More](#)