



Image may be representation.
See specifications for product details.



SMA6J5.0A-TR

Manufacturer Part Number	SMA6J5.0A-TR
Manufacturer	STMicroelectronics
Allelco Part Number	32D-SMA6J5.0A-TR
ECAD Model	PCB Symbol, Footprint & 3D Model
Parts Description	TVS DIODE 5VWM 13.4VC SMA
Package	DO-214AC, SMA
Data sheet	SMA6J5.0A-TR.pdf
RoHs Status	ROHS3 Compliant

[Get a Quote](#)

SMA6J5.0A-TR - STMicroelectronics.New Original in Stock. Download Linear Technology SMA6J5.0A-TR datasheet/specifications on AllelcoElec.com.
Request a quote for SMA6J5.0A-TR, please send us email: info@allelco.com

Specifications

SMA6J5.0A-TR Tech Specifications

SMA6J5.0A-TR - STMicroelectronics technical specifications, attributes, parameters

Product Attribute	Attribute Value	Product Attribute	Attribute Value
Manufacturer	STMicroelectronics	Power - Peak Pulse	600W
Voltage - Reverse Standoff (Typ)	5V	Package / Case	DO-214AC, SMA
Voltage - Clamping (Max) @ Ipp	13.4V	Package	Tape & Reel (TR)
Voltage - Breakdown (Min)	6.4V	Operating Temperature	-55°C ~ 175°C (TJ)
Unidirectional Channels	1	Mounting Type	Surface Mount
Type	Zener	Current - Peak Pulse (10/1000µs)	298A (8/20µs)
Supplier Device Package	SMA (DO-214AC)	Capacitance @ Frequency	-
Series	SMA6J, TRANSIL™	Base Product Number	SMA6J5.0
Power Line Protection	No	Applications	General Purpose

Parts with Similar Specifications

The three parts on the right have similar specifications to STMicroelectronics SMA6J5.0A-TR

Product Attribute				
Part Number	SMA6J5.0A-TR	SMA6J40A	SMA6J40A-TR	SMA6J5.0CA
Manufacturer	STMicroelectronics	Bourns Inc.	STMicroelectronics	Littelfuse Inc.
Package / Case	DO-214AC, SMA	DO-214AC, SMA	DO-214AC, SMA	DO-214AC, SMA
Power Line Protection	No	No	No	No
Voltage - Clamping (Max) @ Ipp	13.4V	64.5V	73.6V	9.2V
Voltage - Breakdown (Min)	6.4V	44.4V	44.4V	6.4V
Unidirectional Channels	1	1	1	-
Power - Peak Pulse	600W	600W	600W	600W
Operating Temperature	-55°C ~ 175°C (TJ)	-55°C ~ 150°C (TJ)	-55°C ~ 175°C (TJ)	-65°C ~ 150°C (TJ)
Package	Tape & Reel (TR)	Tape & Reel (TR)	Tape & Reel (TR)	Tape & Reel (TR)
Applications	General Purpose	Telecom	General Purpose	General Purpose
Supplier Device Package	SMA (DO-214AC)	DO-214AC (SMA)	SMA (DO-214AC)	DO-214AC (SMA)
Current - Peak Pulse (10/1000µs)	298A (8/20µs)	9.3A	48A (8/20µs)	66A
Mounting Type	Surface Mount	Surface Mount	Surface Mount	Surface Mount
Voltage - Reverse Standoff (Typ)	5V	40V	40V	5V
Type	Zener	Zener	Zener	Zener
Capacitance @ Frequency	-	-	-	-
Base Product Number	SMA6J5.0	SMA6J40	SMA6J40	-
Series	SMA6J, TRANSIL™	SMA6J	SMA6J, TRANSIL™	SMA6J

SMA6J5.0A-TR Datasheet PDF

Download SMA6J5.0A-TR pdf datasheets and STMicroelectronics documentation for SMA6J5.0A-TR - STMicroelectronics.

PCN Packaging

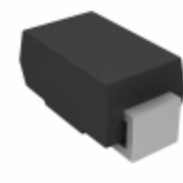
[Box Label Chg 28/Jul/2016.pdf](#)

PCN Assembly/Origin

[Mult Dev 06/Mar/2020.pdf](#)

Customers Also Interested in

Recommended Products

**SMA6J40A**Bourns Inc.
TVS DIODE 40VWM 64.5VC DO214AC**SMA6J40A-TR**STMicroelectronics
TVS DIODE 40VWM 73.6VC SMA**SMA6J5.0CA**Littelfuse Inc.
TVS DIODE 5VWM 9.2VC DO214AC**SMA6J6.0CA**Bourns Inc.
TVS DIODE 6VWM 10.3VC DO214AC**SMA6J5.0A**Bourns Inc.
TVS DIODE**SMA6J6.0A**Bourns Inc.
TVS DIODE 6VWM 10.3VC DO214AC**SMA6J33CA-TR**STMicroelectronics
TVS DIODE 33VWM 60.8VC SMA**SMA6J6.0CA**Littelfuse Inc.
TVS DIODE 6VWM 10.3VC DO214AC**SMA6J40CA-TR**STMicroelectronics
TVS DIODE 40VWM 73.6VC SMA**SMA6J58A-TR**STMicroelectronics
TVS DIODE 58VWM 100VC SMA**SMA6J5.0A-E3/61**Vishay General Semiconductor -
Diodes Division
TVS DIODE 5VWM 13.4VC DO214AC**SMA6J6.0CA-TR**STMicroelectronics
TVS DIODE 6VWM 13.7VC SMA**SMA6J48A-TR**STMicroelectronics
TVS DIODE 48VWM 88.4VC SMA**SMA6J40A**Littelfuse Inc.
TVS DIODE 40VWM 64.5V DO214AC**SMA6J6.0A**Littelfuse Inc.
TVS DIODE 6VWM 10.3VC DO214AC**SMA6J5.0CA**Bourns Inc.
TVS DIODE 5VWM 9.2VC DO214AC**SMA6J5.0A**Littelfuse Inc.
TVS DIODE 5VWM 9.2VC DO214AC**SMA6J6.0A-TR**STMicroelectronics
TVS DIODE 6VWM 13.7VC SMA

Shipment

Delivery Time

In-stock items can be shipped within 24 hours. Some parts will be arranged for delivery within 1-2 days from the date all items arrive at our warehouse. And Allelco ships order once a day at about 17:00, except Sunday. Once the goods are shipped, the estimated delivery time depends on the shipping methods and Delivery destination. The table below shows are the logistic time for some common countries.

Delivery Cost

> Use your express account for shipment if you have one.

> Use our account for the shipment. Refer to the table below for the approximate charges.

(Different time frame / countries / package size has different price.)

Delivery Method

> Global Common Shipment by DHL / UPS / FedEx / TNT / EMS / SF we support.

> Others more shipping ways, please get in touch with your customer manager.

Common Countries Logistic Time Reference		
Region	Country	Logistic Time(Day)
America	United States	5
	Brazil	7
Europe	Germany	5
	United Kingdom	4
	Italy	5
Oceania	Australia	6
	New Zealand	7
Asia	India	6
	Japan	7
Middle East	Israel	6

DHL & FedEx Shipment Charges Reference	
Shipment charges(KG)	Reference DHL(USD\$)
0.00kg-1.00kg	USD\$60.00
1.00kg-2.00kg	USD\$70.00
2.00kg-3.00kg	USD\$80.00

Note: The above table is for reference only. There may have some data bias for the uncontrollable factors.

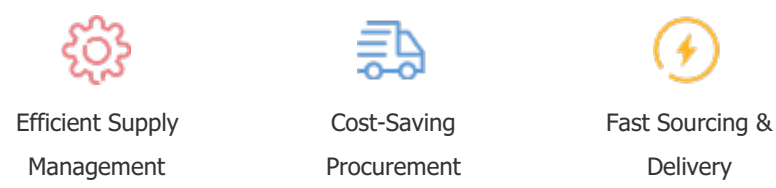
Contact us if you have any questions.

Payment Support

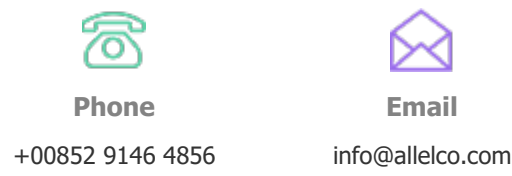
The payment method can be chosen from the methods shown below:
Wire Transfer (T/T, Bank Transfer), Western Union, Credit card,
PayPal.



Your Faithful Supply Chain Partner -



Contact us if you have any questions.



Certifications & Memberships



[View More](#)