

Image may be representation.  
See specifications for product details.



## MAX339CSE

Manufacturer Part Number	<b>MAX339CSE</b>
Manufacturer	<b>Maxim Integrated</b>
Allelco Part Number	32D-MAX339CSE
ECAD Model	Request Free CAD Models
Parts Description	IC SWITCH SP4T X 2 400OHM 16SOIC
Package	16-SOIC (0.154", 3.90mm Width)
Data sheet	<b>Cylindrical Battery Holders.pdf</b>

**Get a Quote**

MAX339CSE - Analog Devices Inc./Maxim Integrated. New Original in Stock. Download Linear Technology MAX339CSE datasheet/specifications on AllelcoElec.com.  
Request a quote for MAX339CSE, please send us email: [info@allelco.com](mailto:info@allelco.com)

### Specifications

MAX339CSE Tech Specifications

MAX339CSE - Analog Devices Inc./Maxim Integrated technical specifications, attributes, parameters

Product Attribute	Attribute Value	Product Attribute	Attribute Value
Manufacturer	Maxim Integrated	Number of Circuits	2
Voltage - Supply, Single (V+)	4.5V ~ 30V	Multiplexer/Demultiplexer Circuit	4:1
Voltage - Supply, Dual (V±)	±4.5V ~ 20V	Mounting Type	Surface Mount
Switch Time (Ton, Toff) (Max)	500ns, 500ns	Current - Leakage (IS(off)) (Max)	20pA
Switch Circuit	SP4T	Crosstalk	-92dB @ 100kHz
Supplier Device Package	16-SOIC	Charge Injection	1.5pC
Series	-	Channel-to-Channel Matching (ΔRon)	40hm
Package / Case	16-SOIC (0.154", 3.90mm Width)	Channel Capacitance (CS(off), CD(off))	3pF, 6pF
Package	Tube	Base Product Number	MAX339
Operating Temperature	0°C ~ 70°C (TA)	-3db Bandwidth	-
On-State Resistance (Max)	400Ohm		

### Parts with Similar Specifications

The three parts on the right have similar specifications to Analog Devices Inc./Maxim Integrated MAX339CSE

Product Attribute				
Part Number	MAX339CSE	MAX339ETE	MAX339ESE+T	MAX339EEE+
Manufacturer	Analog Devices Inc./Maxim Integrated	Analog Devices Inc./Maxim Integrated	Analog Devices Inc./Maxim Integrated	Analog Devices Inc./Maxim Integrated
Series	-	-	-	-
Operating Temperature	0°C ~ 70°C (TA)	-40°C ~ 85°C (TA)	-40°C ~ 85°C (TA)	-40°C ~ 85°C (TA)
Crosstalk	-92dB @ 100kHz	-92dB @ 100kHz	-92dB @ 100kHz	-92dB @ 100kHz
On-State Resistance (Max)	400Ohm	400Ohm	400Ohm	400Ohm
Mounting Type	Surface Mount	Surface Mount	Surface Mount	Surface Mount
Channel Capacitance (CS(off), CD(off))	3pF, 6pF	3pF, 6pF	3pF, 6pF	3pF, 6pF
Voltage - Supply, Single (V+)	4.5V ~ 30V	4.5V ~ 30V	4.5V ~ 30V	4.5V ~ 30V
Charge Injection	1.5pC	1.5pC	1.5pC	1.5pC
Number of Circuits	2	2	2	2
Package / Case	16-SOIC (0.154", 3.90mm Width)	16-WQFN Exposed Pad	16-SOIC (0.154", 3.90mm Width)	16-SSOP (0.154", 3.90mm Width)
Channel-to-Channel Matching (ΔRon)	40hm	40hm	40hm	40hm
Voltage - Supply, Dual (V±)	±4.5V ~ 20V	±4.5V ~ 20V	±4.5V ~ 20V	±4.5V ~ 20V
Switch Circuit	SP4T	SP4T	SP4T	SP4T
Switch Time (Ton, Toff) (Max)	500ns, 500ns	500ns, 500ns	500ns, 500ns	500ns, 500ns
Multiplexer/Demultiplexer Circuit	4:1	4:1	4:1	4:1
Supplier Device Package	16-SOIC	16-TQFN (5x5)	16-SOIC	16-QSOP
Base Product Number	MAX339	-	MAX339	MAX339
Current - Leakage (IS(off)) (Max)	20pA	20pA	20pA	20pA
-3db Bandwidth	-	-	-	-
Package	Tube	Bulk	Tape & Reel (TR)	Tube

### MAX339CSE Datasheet PDF

Download MAX339CSE pdf datasheets and Analog Devices Inc./Maxim Integrated documentation for MAX339CSE - Analog Devices Inc./Maxim Integrated.

#### Datasheets

[Cylindrical Battery Holders.pdf](#)

#### Environmental Information

[Maxim Integrated REACH.pdf](#)

[Maxim Integrated RoHS Cert.pdf](#)

 Cylindrical Battery Holders.pdf

## Customers Also Interested in

### Recommended Products



#### MAX339ETE

Analog Devices Inc./Maxim Integrated  
IC SWITCH SP4T X 2 400OHM 16TQFN



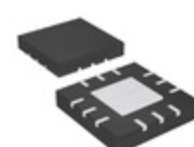
#### MAX3394EETA+T

Analog Devices Inc./Maxim Integrated  
IC TRANSLTR BIDIRECTIONAL 8TDFN



#### MAX3394EEBL

Analog Devices / Maxim Integrated



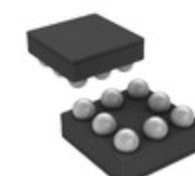
#### MAX3395EETC+T

Analog Devices Inc./Maxim Integrated  
IC TRANSLTR BIDIRECTIONAL 12TQFN



#### MAX339ESE+T

Analog Devices Inc./Maxim Integrated  
IC SWITCH SP4T X 2 400OHM 16SOIC



#### MAX3394EEBL+T

Analog Devices Inc./Maxim Integrated  
IC TRANSLTR BIDIRECTIONAL 8UCSP



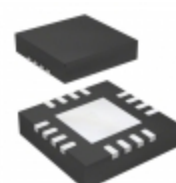
#### MAX339EEE+

Analog Devices Inc./Maxim Integrated  
IC SWITCH SP4T X 2 400OHM 16QSOP



#### MAX339CPE

Analog Devices Inc./Maxim Integrated  
IC SWITCH SP4T X 2 400OHM 16DIP



#### MAX339ETE+T

Analog Devices Inc./Maxim Integrated  
IC SWITCH SP4T X 2 400OHM 16TQFN



#### MAX3420EECJ+

Analog Devices Inc./Maxim Integrated  
IC USB PERIPH CONTROLLER 32LQFP



#### MAX339ESE

Analog Devices Inc./Maxim Integrated  
IC SWITCH SP4T X 2 400OHM 16SOIC



#### MAX339CEE+

Analog Devices Inc./Maxim Integrated  
IC SWITCH SP4T X 2 400OHM 16QSOP



#### MAX3395EETC

Analog Devices / Maxim Integrated



#### MAX339CEE

Analog Devices Inc./Maxim Integrated  
IC SW SP4T-NO/NCX2 400OHM 16QSOP



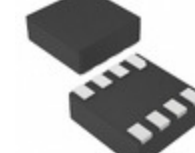
#### MAX339ESE+

Analog Devices Inc./Maxim Integrated  
IC SWITCH SP4T X 2 400OHM 16SOIC



#### MAX3393EEUD+

Analog Devices Inc./Maxim Integrated  
IC TRANSLATOR UNIDIR 14TSSOP



#### MAX3397EELA+T

Analog Devices Inc./Maxim Integrated  
IC TRANSLTR BIDIRECTIONAL 8UDFN



#### MAX3420EECJ+T

Analog Devices Inc./Maxim Integrated  
IC USB PERIPH CONTROLLER 32LQFP

## Shipment

### Delivery Time

In-stock items can be shipped within 24 hours. Some parts will be arranged for delivery within 1-2 days from the date all items arrive at our warehouse. And Allelco ships order once a day at about 17:00, except Sunday. Once the goods are shipped, the estimated delivery time depends on the shipping methods and Delivery destination. The table below shows are the logistic time for some common countries.

### Delivery Cost

- > Use your express account for shipment if you have one.
  - > Use our account for the shipment. Refer to the table below for the approximate charges.
- (Different time frame / countries / package size has different price.)

### Delivery Method

- > Global Common Shipment by DHL / UPS / FedEx / TNT / EMS / SF we support.
- > Others more shipping ways, please get in touch with your customer manager.

Common Countries Logistic Time Reference

Region	Country	Logistic Time(Day)
America	United States	5
	Brazil	7
Europe	Germany	5
	United Kingdom	4
	Italy	5
Oceania	Australia	6
	New Zealand	7
Asia	India	6
	Japan	7
Middle East	Israel	6

DHL & FedEx Shipment Charges Reference

Shipment charges(KG)	Reference DHL(USD\$)
0.00kg-1.00kg	USD\$60.00
1.00kg-2.00kg	USD\$70.00
2.00kg-3.00kg	USD\$80.00

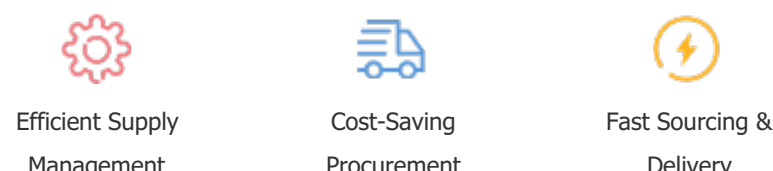
Note: The above table is for reference only. There may have some data bias for the uncontrollable factors.  
Contact us if you have any questions.

### Payment Support

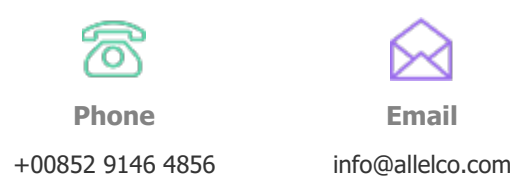
The payment method can be chosen from the methods shown below:  
Wire Transfer (T/T, Bank Transfer), Western Union, Credit card, PayPal.



### Your Faithful Supply Chain Partner -



Contact us if you have any questions.



### Certifications & Memberships



View More

### Contact us

Address: Flat/Rm C 13/F Harvard Commercial Building 105-111 Thomson Road, Wan Chai, Hong Kong  
Phone: +00852 9146 4856  
Fax: +00852 3010 8510  
Email: info@Allelco.com