

Image may be representation.
See specifications for product details.



ADP3339AKCZ-1.8-RL

Manufacturer Part Number	ADP3339AKCZ-1.8-RL
Manufacturer	Analog Devices, Inc.
Allelco Part Number	32D-ADP3339AKCZ-1.8-RL
ECAD Model	Request Free CAD Models
Parts Description	IC REG LINEAR 1.8V 1.5A SOT223-3
Package	TO-261-4, TO-261AA
Data sheet	Cylindrical Battery Holders.pdf
RoHs Status	ROHS3 Compliant

Get a Quote

ADP3339AKCZ-1.8-RL - Analog Devices Inc..New Original in Stock. Download Linear Technology ADP3339AKCZ-1.8-RL datasheet/specifications on AllelcoElec.com. Request a quote for ADP3339AKCZ-1.8-RL, please send us email: info@allelco.com

Specifications

ADP3339AKCZ-1.8-RL Tech Specifications
ADP3339AKCZ-1.8-RL - Analog Devices Inc. technical specifications, attributes, parameters

Product Attribute	Attribute Value	Product Attribute	Attribute Value
Manufacturer	Analog Devices, Inc.	Output Type	Fixed
Voltage Dropout (Max)	0.48V @ 1.5A	Output Configuration	Positive
Voltage - Output (Min/Fixed)	1.8V	Operating Temperature	-40°C ~ 85°C (TA)
Voltage - Output (Max)	-	Number of Regulators	1
Voltage - Input (Max)	6V	Mounting Type	Surface Mount
Supplier Device Package	SOT-223-3	Current - Supply (Max)	40 mA
Series	anyCAP®	Current - Quiescent (Iq)	200 µA
Protection Features	Over Current, Over Temperature	Current - Output	1.5A
Package / Case	TO-261-4, TO-261AA	Control Features	-
Package	Tape & Reel (TR)	Base Product Number	ADP3339
PSRR	-		

Parts with Similar Specifications

The three parts on the right have similar specifications to Analog Devices Inc. ADP3339AKCZ-1.8-RL

Product Attribute				
Part Number	ADP3339AKCZ-1.8-RL	ADP3339AKCZ-1.8-R7	ADP3339AKCZ-3-RL7	ADP3339AKCZ-3.3-RL
Manufacturer	Analog Devices Inc.	Analog Devices Inc.	Analog Devices Inc.	Analog Devices Inc.
Protection Features	Over Current, Over Temperature	Over Current, Over Temperature	Over Current, Over Temperature	Over Current, Over Temperature
Current - Output	1.5A	1.5A	1.5A	1.5A
Mounting Type	Surface Mount	Surface Mount	Surface Mount	Surface Mount
Voltage Dropout (Max)	0.48V @ 1.5A	0.48V @ 1.5A	0.48V @ 1.5A	0.48V @ 1.5A
Voltage - Output (Max)	-	-	-	-
Supplier Device Package	SOT-223-3	SOT-223-3	SOT-223-3	SOT-223-3
PSRR	-	-	-	-
Current - Quiescent (Iq)	200 µA	200 µA	200 µA	200 µA
Series	anyCAP®	anyCAP®	anyCAP®	anyCAP®
Voltage - Input (Max)	6V	6V	6V	6V
Base Product Number	ADP3339	ADP3339	ADP3339	ADP3339
Current - Supply (Max)	40 mA	40 mA	40 mA	40 mA
Control Features	-	-	-	-
Voltage - Output (Min/Fixed)	1.8V	1.8V	3V	3.3V
Package / Case	TO-261-4, TO-261AA	TO-261-4, TO-261AA	TO-261-4, TO-261AA	TO-261-4, TO-261AA
Package	Tape & Reel (TR)	Tape & Reel (TR)	Tape & Reel (TR)	Bulk
Output Configuration	Positive	Positive	Positive	Positive
Number of Regulators	1	1	1	1
Operating Temperature	-40°C ~ 85°C (TA)	-40°C ~ 85°C (TA)	-40°C ~ 85°C (TA)	-40°C ~ 85°C (TA)
Output Type	Fixed	Fixed	Fixed	Fixed

ADP3339AKCZ-1.8-RL Datasheet PDF

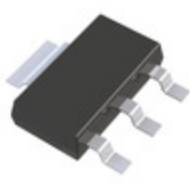
Download ADP3339AKCZ-1.8-RL pdf datasheets and Analog Devices Inc. documentation for ADP3339AKCZ-1.8-RL - Analog Devices Inc..

Datasheets

Cylindrical Battery Holders.pdf

Customers Also Interested in

Recommended Products

**ADP3339AKCZ-1.5-RL7**

ADI (Analog Devices, Inc.)

ADP3339AKCZ-1.8

ADI (Analog Devices, Inc.)

ADP3339AKCZ-1.8-R7Analog Devices Inc.
IC REG LINEAR 1.8V 1.5A SOT223-3**ADP3339AKCZ-2.85-RL7**

ADI (Analog Devices, Inc.)

ADP3339AKCZ-2.5-RL7

ADI (Analog Devices, Inc.)

ADP3339AKCZ-3-RL7Analog Devices Inc.
IC REG LINEAR 3V 1.5A SOT223-3**ADP3339AKCZ-2.85**

ADI (Analog Devices, Inc.)

ADP3339AKC-3.3-RLAnalog Devices Inc.
IC REG LDO 1.5A 3.3V SOT-223 TR**ADP3339AKCZ-1.8-RL7**

ADI (Analog Devices, Inc.)

ADP3339AKCZ-2.5-R7Analog Devices Inc.
IC REG LINEAR 2.5V 1.5A SOT223-3**ADP3339AKC-3.3-RL7**Analog Devices Inc.
IC REG LDO 1.5A 3.3V SOT-223 TR**ADP3339AKCZ-2.5**

ADI (Analog Devices, Inc.)

**ADP3339AKC-5.0**

ADI (Analog Devices, Inc.)

ADP3339AKCZ-1.5

ADI (Analog Devices, Inc.)

ADP3339AKC-5.0-RL7

ADI (Analog Devices, Inc.)

ADP3339AKCZ-1.5-RLAnalog Devices Inc.
IC REG LINEAR 1.5V 1.5A SOT223-3**ADP3339AKCZ-1.5-R7**Analog Devices Inc.
IC REG LINEAR 1.5V 1.5A SOT223-3**ADP3339AKCZ-1.8-RL7**

ADI (Analog Devices, Inc.)

Shipment

Delivery Time

In-stock items can be shipped within 24 hours. Some parts will be arranged for delivery within 1-2 days from the date all items arrive at our warehouse. And Allelco ships order once a day at about 17:00, except Sunday. Once the goods are shipped, the estimated delivery time depends on the shipping methods and Delivery destination. The table below shows are the logistic time for some common countries.

Delivery Cost

- > Use your express account for shipment if you have one.
 - > Use our account for the shipment. Refer to the table below for the approximate charges.
- (Different time frame / countries / package size has different price.)

Delivery Method

- > Global Common Shipment by DHL / UPS / FedEx / TNT / EMS / SF we support.
- > Others more shipping ways, please get in touch with your customer manager.

Common Countries Logistic Time Reference		
Region	Country	Logistic Time(Day)
America	United States	5
	Brazil	7
Europe	Germany	5
	United Kingdom	4
	Italy	5
Oceania	Australia	6
	New Zealand	7
Asia	India	6
	Japan	7
Middle East	Israel	6

DHL & FedEx Shipment Charges Reference	
Shipment charges(KG)	Reference DHL(USD\$)
0.00kg-1.00kg	USD\$60.00
1.00kg-2.00kg	USD\$70.00
2.00kg-3.00kg	USD\$80.00

Note: The above table is for reference only. There may have some data bias for the uncontrollable factors. Contact us if you have any questions.

Payment Support

The payment method can be chosen from the methods shown below:
Wire Transfer (T/T, Bank Transfer), Western Union, Credit card, PayPal.



Your Faithful Supply Chain Partner -

- Efficient Supply Management
- Cost-Saving Procurement
- Fast Sourcing & Delivery

Contact us if you have any questions.

- Phone
+00852 9146 4856
- Email
info@allelco.com

Certifications & Memberships



[View More](#)

Contact us

Address: Flat/Rm C 13/F Harvard Commercial Building 105-111 Thomson Road, Wan Chai, Hong Kong
Phone: +00852 9146 4856
Fax: +00852 3010 8510
Email: info@Allelco.com