

Image may be representation.
See specifications for product details.



EP3SL200F1152I3

Manufacturer Part Number **EP3SL200F1152I3**

Manufacturer **Intel**

Allelco Part Number **32D-EP3SL200F1152I3**

ECAD Model [Request Free CAD Models](#)

Parts Description **IC FPGA 744 I/O 1152FBGA**

Package **1152-BBGA, FCBGA**

Data sheet [Virtual JTAG Megafuntion Guide.pdf](#)

[Stratix III Device Family Overview.pdf](#)

[Stratix III Device Handbook.pdf](#)

RoHs Status **RoHS Compliant**

[Get a Quote](#)

EP3SL200F1152I3 - Intel.New Original in Stock. Download Linear Technology EP3SL200F1152I3 datasheet/specifications on AllelcoElec.com.
Request a quote for EP3SL200F1152I3, please send us email: info@allelco.com

Specifications

EP3SL200F1152I3 Tech Specifications

EP3SL200F1152I3 - Intel technical specifications, attributes, parameters

Product Attribute	Attribute Value	Product Attribute	Attribute Value
Manufacturer	Intel	Operating Temperature	-40°C ~ 100°C (TJ)
Voltage - Supply	0.86V ~ 1.15V	Number of Logic Elements/Cells	200000
Total RAM Bits	10901504	Number of LABs/CLBs	8000
Supplier Device Package	1152-FBGA (35x35)	Number of I/O	744
Series	Stratix® III L	Mounting Type	Surface Mount
Package / Case	1152-BBGA, FCBGA	Base Product Number	EP3SL200
Package	Tray		

Parts with Similar Specifications

The three parts on the right have similar specifications to Intel EP3SL200F1152I3

Product Attribute				
Part Number	EP3SL200F1152I3	EP3SL200F1517I4LN	EP3SL150F780I3N	EP3SL200F1152C4
Manufacturer	Intel	Intel	Intel	Intel
Total RAM Bits	10901504	10901504	6543360	10901504
Number of Logic Elements/Cells	200000	200000	142500	200000
Operating Temperature	-40°C ~ 100°C (TJ)	-40°C ~ 100°C (TJ)	-40°C ~ 100°C (TJ)	0°C ~ 85°C (TJ)
Package / Case	1152-BBGA, FCBGA	1517-BBGA, FCBGA	780-BBGA, FCBGA	1152-BBGA, FCBGA
Series	Stratix® III L	Stratix® III L	Stratix® III L	Stratix® III L
Number of I/O	744	976	488	744
Voltage - Supply	0.86V ~ 1.15V	0.86V ~ 1.15V	0.86V ~ 1.15V	0.86V ~ 1.15V
Number of LABs/CLBs	8000	8000	5700	8000
Mounting Type	Surface Mount	Surface Mount	Surface Mount	Surface Mount
Package	Tray	Tray	Tray	Tray
Supplier Device Package	1152-FBGA (35x35)	1517-FBGA (40x40)	780-FBGA (29x29)	1152-FBGA (35x35)
Base Product Number	EP3SL200	EP3SL200	EP3SL150	EP3SL200

EP3SL200F1152I3 Datasheet PDF

Download EP3SL200F1152I3 pdf datasheets and Intel documentation for EP3SL200F1152I3 - Intel.

Datasheets



[Virtual JTAG Megafuntion Guide.pdf](#)



[Stratix III Device Family Overview.pdf](#)



[Stratix III Device Handbook.pdf](#)

PCN Design/Specification



[Cylindrical Battery Holders.pdf](#)

PCN Packaging



[Mult Dev Label CHG 24/Jan/2020.pdf](#)



[Mult Dev Label Chgs 24/Feb/2020.pdf](#)

PCN Obsolescence/ EOL



[Cylindrical Battery Holders.pdf](#)

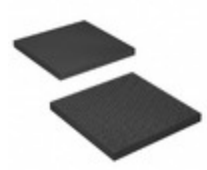
PCN Part Status Change



[2.73KHz.pdf](#)

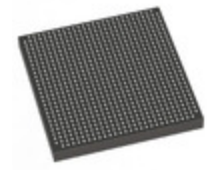
Customers Also Interested in

Recommended Products



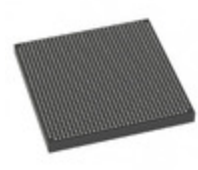
EP3SL200F1517I4LN

Intel
IC FPGA 976 I/O 1517FBGA



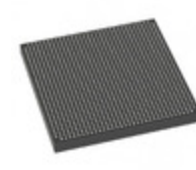
EP3SL150F780I3N

Intel
IC FPGA 488 I/O 780FBGA



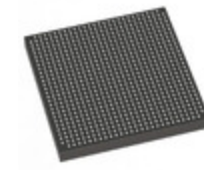
EP3SL200F1152C4

Intel
IC FPGA 744 I/O 1152FBGA



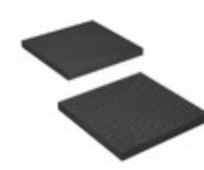
EP3SL200F1152I3N

Intel
IC FPGA 744 I/O 1152FBGA



EP3SL150F780I4L

Intel
IC FPGA 488 I/O 780FBGA



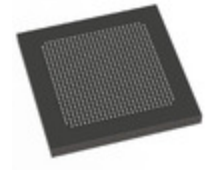
EP3SL200F1517C2N

Intel
IC FPGA 976 I/O 1517FBGA



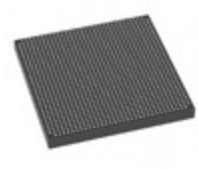
EP3SL200F1517I3N

Intel
IC FPGA 976 I/O 1517FBGA



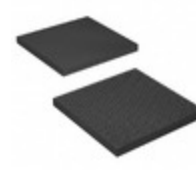
EP3SL200H780I4N

Intel
IC FPGA 488 I/O 780HBGA



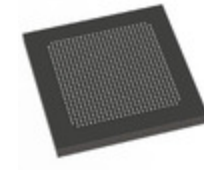
EP3SL200F1152I4N

Intel
IC FPGA 744 I/O 1152FBGA



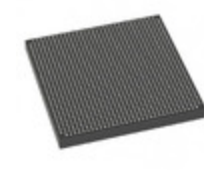
EP3SL200F1517C2

Intel
IC FPGA 976 I/O 1517FBGA



EP3SL200H780I3

Intel
IC FPGA 488 I/O 780HBGA



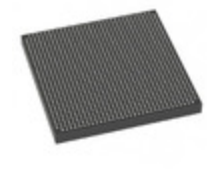
EP3SL200F1152C3NAD

Intel
IC FPGA 744 I/O 1152FBGA



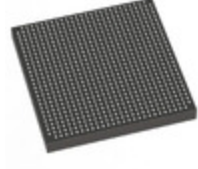
EP3SL200F1152C4N

Intel
IC FPGA 744 I/O 1152FBGA



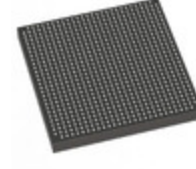
EP3SL200F1152C3

Intel
IC FPGA 744 I/O 1152FBGA



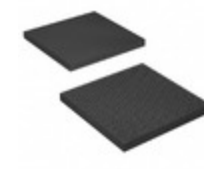
EP3SL150F780I4N

Intel
IC FPGA 488 I/O 780FBGA



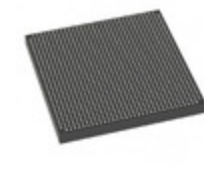
EP3SL150F780C4N

Intel
IC FPGA 488 I/O 780FBGA



EP3SL340F1517C2N

Intel
IC FPGA 976 I/O 1517FBGA



EP3SL200F1152C3N

Intel
IC FPGA 744 I/O 1152FBGA

Shipment

Delivery Time

In-stock items can be shipped within 24 hours. Some parts will be arranged for delivery within 1-2 days from the date all items arrive at our warehouse. And Allelco ships order once a day at about 17:00, except Sunday. Once the goods are shipped, the estimated delivery time depends on the shipping methods and Delivery destination. The table below shows are the logistic time for some common countries.

Delivery Cost

> Use your express account for shipment if you have one.

> Use our account for the shipment. Refer to the table below for the approximate charges.

(Different time frame / countries / package size has different price.)

Delivery Method

> Global Common Shipment by DHL / UPS / FedEx / TNT / EMS / SF we support.

> Others more shipping ways, please get in touch with your customer manager.

Common Countries Logistic Time Reference

Region	Country	Logistic Time(Day)
America	United States	5
	Brazil	7
Europe	Germany	5
	United Kingdom	4
	Italy	5
Oceania	Australia	6
	New Zealand	7
Asia	India	6
	Japan	7
Middle East	Israel	6

DHL & FedEx Shipment Charges Reference

Shipment charges(KG)	Reference DHL(USD\$)
0.00kg-1.00kg	USD\$60.00
1.00kg-2.00kg	USD\$70.00
2.00kg-3.00kg	USD\$80.00

Note: The above table is for reference only. There may have some data bias for the uncontrollable factors.

Contact us if you have any questions.

Payment Support

The payment method can be chosen from the methods shown below:

Wire Transfer (T/T, Bank Transfer), Western Union, Credit card, PayPal.



Your Faithful Supply Chain Partner -



Efficient Supply Management



Cost-Saving Procurement



Fast Sourcing & Delivery

Contact us if you have any questions.



Phone

+00852 9146 4856



Email

info@allelco.com

Certifications & Memberships



View More