

Image may be representation.
See specifications for product details.



AD8602DRZ-REEL7

Manufacturer Part Number	AD8602DRZ-REEL7
Manufacturer	Analog Devices, Inc.
Allelco Part Number	32D-AD8602DRZ-REEL7
ECAD Model	Request Free CAD Models
Parts Description	IC CMOS 2 CIRCUIT 8SOIC
Package	8-SOIC (0.154", 3.90mm Width)
Data sheet	AD8601,02,04.pdf
RoHs Status	ROHS3 Compliant

Get a Quote

AD8602DRZ-REEL7 - Analog Devices Inc..New Original in Stock. Download Linear Technology AD8602DRZ-REEL7 datasheet/specifications on AllelcoElec.com.
Request a quote for AD8602DRZ-REEL7, please send us email: info@allelco.com

Specifications

AD8602DRZ-REEL7 Tech Specifications
AD8602DRZ-REEL7 - Analog Devices Inc. technical specifications, attributes, parameters

Product Attribute	Attribute Value	Product Attribute	Attribute Value
Manufacturer	Analog Devices, Inc.	Operating Temperature	-40°C ~ 125°C
Voltage - Supply Span (Min)	2.7 V	Number of Circuits	2
Voltage - Supply Span (Max)	5.5 V	Mounting Type	Surface Mount
Voltage - Input Offset	1.3 mV	Gain Bandwidth Product	8.4 MHz
Supplier Device Package	8-SOIC	Current - Supply	750µA (x2 Channels)
Slew Rate	6V/µs	Current - Output / Channel	50 mA
Series	DigiTrim®	Current - Input Bias	0.2 pA
Package / Case	8-SOIC (0.154", 3.90mm Width)	Base Product Number	AD8602
Package	Tape & Reel (TR)	Amplifier Type	CMOS
Output Type	Rail-to-Rail		

Parts with Similar Specifications

The three parts on the right have similar specifications to Analog Devices Inc. AD8602DRZ-REEL7

Product Attribute				
Part Number	AD8602DRZ-REEL7	AD8603AUJZ-REEL	AD8602WARZ-RL	AD8603AUJZ-REEL7
Manufacturer	Analog Devices Inc.	Analog Devices Inc.	Analog Devices Inc.	Analog Devices Inc.
Current - Output / Channel	50 mA	70 mA	50 mA	70 mA
Voltage - Input Offset	1.3 mV	12 µV	80 µV	12 µV
Slew Rate	6V/µs	0.1V/µs	6V/µs	0.1V/µs
Amplifier Type	CMOS	General Purpose	CMOS	General Purpose
Voltage - Supply Span (Max)	5.5 V	5 V	5.5 V	5 V
Current - Supply	750µA (x2 Channels)	40µA	750µA (x2 Channels)	40µA
Current - Input Bias	0.2 pA	0.2 pA	0.2 pA	0.2 pA
Voltage - Supply Span (Min)	2.7 V	1.8 V	2.7 V	1.8 V
Gain Bandwidth Product	8.4 MHz	400 kHz	8.4 MHz	400 kHz
Package	Tape & Reel (TR)	Tape & Reel (TR)	Tape & Reel (TR)	Tape & Reel (TR)
Output Type	Rail-to-Rail	Rail-to-Rail	Rail-to-Rail	Rail-to-Rail
Supplier Device Package	8-SOIC	TSOT-23-5	8-SOIC	TSOT-23-5
Number of Circuits	2	1	2	1
Mounting Type	Surface Mount	Surface Mount	Surface Mount	Surface Mount
Base Product Number	AD8602	AD8603	AD8602	AD8603
Operating Temperature	-40°C ~ 125°C	-40°C ~ 125°C	-40°C ~ 125°C	-40°C ~ 125°C
Series	DigiTrim®	-	DigiTrim®	-
Package / Case	8-SOIC (0.154", 3.90mm Width)	SOT-23-5 Thin, TSOT-23-5	8-SOIC (0.154", 3.90mm Width)	SOT-23-5 Thin, TSOT-23-5

AD8602DRZ-REEL7 Datasheet PDF

Download AD8602DRZ-REEL7 pdf datasheets and Analog Devices Inc. documentation for AD8602DRZ-REEL7 - Analog Devices Inc..

Datasheets

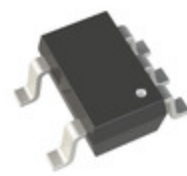
[AD8601,02,04.pdf](#)

Other Related Documents

[Tape and Reel Packaging.pdf](#)

Customers Also Interested in

Recommended Products

**AD8603AUJZ-REEL**Analog Devices Inc.
IC OPAMP GP 1 CIRCUIT TSOT23-5**AD8603AUJZ**

ADI (Analog Devices, Inc.)

AD8602WARZ-RLAnalog Devices Inc.
IC CMOS 2 CIRCUIT 8SOIC**AD8603AUJZ-REEL7**Analog Devices Inc.
IC OPAMP GP 1 CIRCUIT TSOT23-5**AD8603AUJZ-R2**Analog Devices Inc.
IC OPAMP GP 1 CIRCUIT TSOT23-5**AD8602ARZ-REEL7**Analog Devices Inc.
IC CMOS 2 CIRCUIT 8SOIC**AD8603AUJ**

ADI (Analog Devices, Inc.)

AD8602DRZAnalog Devices Inc.
IC CMOS 2 CIRCUIT 8SOIC**AD8602DRMZ**

ADI (Analog Devices, Inc.)

AD8602DRMZ-REELAnalog Devices Inc.
IC CMOS 2 CIRCUIT 8MSOP**AD8604ARU-REEL**Analog Devices Inc.
IC OPAMP GP CMOS 8.4MHZ
14TSSOP**AD8602DR**Analog Devices Inc.
IC CMOS 2 CIRCUIT 8SOIC**AD8604ARU**Analog Devices Inc.
IC OPAMP GP CMOS 8.4MHZ
14TSSOP**AD8602DRM-REEL(ABD)**

ADI (Analog Devices, Inc.)

AD8602DRM-REELAnalog Devices Inc.
IC CMOS 2 CIRCUIT 8MSOP**AD8602DRM**

ADI (Analog Devices, Inc.)

AD8602DRZ-REELAnalog Devices Inc.
IC CMOS 2 CIRCUIT 8SOIC**AD8602DRMZ-REEL7**

ADI (Analog Devices, Inc.)

Shipment

Delivery Time

In-stock items can be shipped within 24 hours. Some parts will be arranged for delivery within 1-2 days from the date all items arrive at our warehouse. And Allelco ships order once a day at about 17:00, except Sunday. Once the goods are shipped, the estimated delivery time depends on the shipping methods and Delivery destination. The table below shows are the logistic time for some common countries.

Delivery Cost

> Use your express account for shipment if you have one.

> Use our account for the shipment. Refer to the table below for the approximate charges.

(Different time frame / countries / package size has different price.)

Delivery Method

> Global Common Shipment by DHL / UPS / FedEx / TNT / EMS / SF we support.

> Others more shipping ways, please get in touch with your customer manager.

Common Countries Logistic Time Reference

Region	Country	Logistic Time(Day)
America	United States	5
	Brazil	7
Europe	Germany	5
	United Kingdom	4
	Italy	5
Oceania	Australia	6
	New Zealand	7
Asia	India	6
	Japan	7
Middle East	Israel	6

DHL & FedEx Shipment Charges Reference

Shipment charges(KG)	Reference DHL(USD\$)
0.00kg-1.00kg	USD\$60.00
1.00kg-2.00kg	USD\$70.00
2.00kg-3.00kg	USD\$80.00

Note: The above table is for reference only. There may have some data bias for the uncontrollable factors.

Contact us if you have any questions.

Payment Support

The payment method can be chosen from the methods shown below:

Wire Transfer (T/T, Bank Transfer), Western Union, Credit card, PayPal.



Your Faithful Supply Chain Partner -



Efficient Supply Management



Cost-Saving Procurement



Fast Sourcing & Delivery

Contact us if you have any questions.



Phone

+00852 9146 4856



Email

info@allelco.com

Certifications & Memberships



[View More](#)

Contact us

Address: Flat/Rm C 13/F Harvard Commercial Building 105-111 Thomson Road, Wan Chai, Hong Kong

Phone: +00852 9146 4856

Fax: +00852 3010 8510

Email: info@allelco.com