



Image may be representation.
See specifications for product details.



ADG701BRMZ-REEL7

| | |
|--------------------------|----------------------------------------|
| Manufacturer Part Number | ADG701BRMZ-REEL7 |
| Manufacturer | Analog Devices, Inc. |
| Allelco Part Number | 32D-ADG701BRMZ-REEL7 |
| ECAD Model | Request Free CAD Models |
| Parts Description | IC SWITCH SPST-NO X 1 30HM 8MSOP |
| Package | 8-TSSOP, 8-MSOP (0.118", 3.00mm Width) |
| Data sheet | Cylindrical Battery Holders.pdf |
| RoHs Status | ROHS3 Compliant |

Get a Quote

ADG701BRMZ-REEL7 - Analog Devices Inc..New Original in Stock. Download Linear Technology ADG701BRMZ-REEL7 datasheet/specifications on AllelcoElec.com.
Request a quote for ADG701BRMZ-REEL7, please send us email: info@allelco.com

Specifications

ADG701BRMZ-REEL7 Tech Specifications
ADG701BRMZ-REEL7 - Analog Devices Inc. technical specifications, attributes, parameters

| Product Attribute | Attribute Value | Product Attribute | Attribute Value |
|-------------------------------|----------------------------------------|----------------------------------------|-----------------|
| Manufacturer | Analog Devices, Inc. | Number of Circuits | 1 |
| Voltage - Supply, Single (V+) | 1.8V ~ 5V | Multiplexer/Demultiplexer Circuit | 1:1 |
| Voltage - Supply, Dual (V±) | - | Mounting Type | Surface Mount |
| Switch Time (Ton, Toff) (Max) | 12ns, 8ns (Typ) | Current - Leakage (IS(off)) (Max) | 10pA (Typ) |
| Switch Circuit | SPST - NO | Crosstalk | - |
| Supplier Device Package | 8-MSOP | Charge Injection | 5pC |
| Series | - | Channel-to-Channel Matching (ΔRon) | - |
| Package / Case | 8-TSSOP, 8-MSOP (0.118", 3.00mm Width) | Channel Capacitance (CS(off), CD(off)) | 17pF, 17pF |
| Package | Tape & Reel (TR) | Base Product Number | ADG701 |
| Operating Temperature | -40°C ~ 85°C (TA) | -3db Bandwidth | 200MHz |
| On-State Resistance (Max) | 30hm | | |

Parts with Similar Specifications

The three parts on the right have similar specifications to Analog Devices Inc. ADG701BRMZ-REEL7

| Product Attribute | | | | |
|----------------------------------------|----------------------------------------|---------------------|---------------------------------|---------------------|
| Part Number | ADG701BRMZ-REEL7 | ADG701LBRTZ-REEL7 | ADG662BRUZ | ADG702BRJZ-500RL7 |
| Manufacturer | Analog Devices Inc. | Analog Devices Inc. | Analog Devices Inc. | Analog Devices Inc. |
| Crosstalk | - | - | - | - |
| Package | Tape & Reel (TR) | Tape & Reel (TR) | Tube | Tape & Reel (TR) |
| Current - Leakage (IS(off)) (Max) | 10pA (Typ) | 250pA | - | 10pA (Typ) |
| Operating Temperature | -40°C ~ 85°C (TA) | -40°C ~ 85°C (TA) | - | -40°C ~ 85°C (TA) |
| Base Product Number | ADG701 | ADG701 | ADG662 | ADG702 |
| Series | - | - | - | - |
| Package / Case | 8-TSSOP, 8-MSOP (0.118", 3.00mm Width) | SOT-23-6 | 16-TSSOP (0.173", 4.40mm Width) | SC-74A, SOT-753 |
| -3db Bandwidth | 200MHz | 200MHz | - | 200MHz |
| Multiplexer/Demultiplexer Circuit | 1:1 | 1:1 | - | 1:1 |
| Channel-to-Channel Matching (ΔRon) | - | - | - | - |
| Voltage - Supply, Single (V+) | 1.8V ~ 5V | 1.8V ~ 5V | - | 1.8V ~ 5V |
| Mounting Type | Surface Mount | Surface Mount | Surface Mount | Surface Mount |
| On-State Resistance (Max) | 30hm | 30hm | - | 30hm |
| Number of Circuits | 1 | 1 | - | 1 |
| Supplier Device Package | 8-MSOP | SOT-23-6 | 16-TSSOP | SOT-23-5 |
| Switch Time (Ton, Toff) (Max) | 12ns, 8ns (Typ) | 12ns, 8ns (Typ) | - | 12ns, 8ns (Typ) |
| Voltage - Supply, Dual (V±) | - | - | - | - |
| Switch Circuit | SPST - NO | SPST - NO | - | SPST - NC |
| Charge Injection | 5pC | 5pC | - | 5pC |
| Channel Capacitance (CS(off), CD(off)) | 17pF, 17pF | 17pF, 17pF | - | 17pF, 17pF |

ADG701BRMZ-REEL7 Datasheet PDF

Download ADG701BRMZ-REEL7 pdf datasheets and Analog Devices Inc. documentation for ADG701BRMZ-REEL7 - Analog Devices Inc..

Datasheets

[Cylindrical Battery Holders.pdf](#)

Other Related Documents

[Tape and Reel Packaging.pdf](#)

 2.73KHz.pdf

Customers Also Interested in

Recommended Products



ADG702BRJ

ADI (Analog Devices, Inc.)



ADG662BRUZ

Analog Devices Inc.
IC SWITCH QUAD SPST 16TSSOP



ADG702BRJZ-500RL7

Analog Devices Inc.
IC SWITCH SPST-NCX1 30HM SOT23-5



ADG701BRMZ

Analog Devices Inc.
IC SWITCH SPST-NO X 1 30HM 8MSOP



ADG701BRT-REEL7

Analog Devices Inc.
IC SWITCH SPST-NOX1 30HM SOT23-6



ADG701BRJZ-REEL71



ADG701LBRTZ-500RL7

ADI (Analog Devices, Inc.)



ADG702BRJZ

ADI (Analog Devices, Inc.)



ADG662BRU

Analog Devices Inc.
IC SWITCH QUAD SPST 16TSSOP



ADG701BRTZ-REEL7

Analog Devices Inc.
IC SWITCH SPST-NOX1 30HM SOT23-6



ADG701BRJZ-REEL7

Analog Devices Inc.
IC SWITCH SPST-NOX1 30HM SOT23-5



ADG701BRM

Analog Devices Inc.
IC SWITCH SPST 8MSOP



ADG701BRJ-REEL7

Analog Devices Inc.
IC SWITCH SPST-NOX1 30HM SOT23-5



ADG663BRUZ

ADI (Analog Devices, Inc.)



ADG701BRT

ADI (Analog Devices, Inc.)



ADG702BRJ-REEL7

Analog Devices Inc.
IC SWITCH SPST-NCX1 30HM SOT23-5



ADG701BRTZ

ADI (Analog Devices, Inc.)

Shipment

Delivery Time

In-stock items can be shipped within 24 hours. Some parts will be arranged for delivery within 1-2 days from the date all items arrive at our warehouse. And Allelco ships order once a day at about 17:00, except Sunday. Once the goods are shipped, the estimated delivery time depends on the shipping methods and Delivery destination. The table below shows are the logistic time for some common countries.

Delivery Cost

- > Use your express account for shipment if you have one.
 - > Use our account for the shipment. Refer to the table below for the approximate charges.
- (Different time frame / countries / package size has different price.)

Delivery Method

- > Global Common Shipment by DHL / UPS / FedEx / TNT / EMS / SF we support.
- > Others more shipping ways, please get in touch with your customer manager.

Common Countries Logistic Time Reference

| Region | Country | Logistic Time(Day) |
|-------------|----------------|--------------------|
| America | United States | 5 |
| | Brazil | 7 |
| Europe | Germany | 5 |
| | United Kingdom | 4 |
| | Italy | 5 |
| Oceania | Australia | 6 |
| | New Zealand | 7 |
| Asia | India | 6 |
| | Japan | 7 |
| Middle East | Israel | 6 |

DHL & FedEx Shipment Charges Reference

| Shipment charges(KG) | Reference DHL(USD\$) |
|----------------------|----------------------|
| 0.00kg-1.00kg | USD\$60.00 |
| 1.00kg-2.00kg | USD\$70.00 |
| 2.00kg-3.00kg | USD\$80.00 |

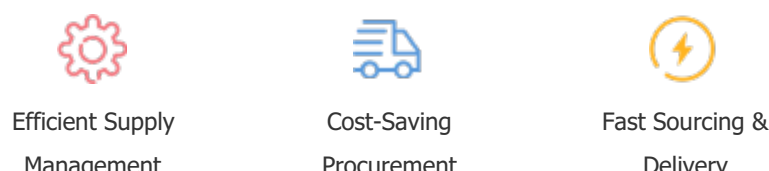
Note: The above table is for reference only. There may have some data bias for the uncontrollable factors.
Contact us if you have any questions.

Payment Support

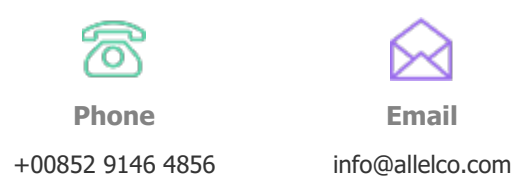
The payment method can be chosen from the methods shown below:
Wire Transfer (T/T, Bank Transfer), Western Union, Credit card, PayPal.



Your Faithful Supply Chain Partner -



Contact us if you have any questions.



Certifications & Memberships



[View More](#)