



Image may be representation.
See specifications for product details.



AT49F040-70JC

Manufacturer Part Number	AT49F040-70JC
Manufacturer	Microchip Technology
Allelco Part Number	32D-AT49F040-70JC
ECAD Model	Request Free CAD Models
Parts Description	IC FLASH 4MBIT PARALLEL 32PLCC
Package	32-LCC (J-Lead)
Data sheet	Cylindrical Battery Holders.pdf

Get a Quote

AT49F040-70JC - Microchip Technology. New Original in Stock. Download Linear Technology AT49F040-70JC datasheet/specifications on AllelcoElec.com.
Request a quote for AT49F040-70JC, please send us email: info@allelco.com

Specifications

AT49F040-70JC Tech Specifications
AT49F040-70JC - Microchip Technology technical specifications, attributes, parameters

Product Attribute	Attribute Value	Product Attribute	Attribute Value
Manufacturer	Microchip Technology	Mounting Type	Surface Mount
Write Cycle Time - Word, Page	50µs	Memory Type	Non-Volatile
Voltage - Supply	4.5V ~ 5.5V	Memory Size	4Mbit
Technology	FLASH	Memory Organization	512K x 8
Supplier Device Package	32-PLCC (13.97x11.43)	Memory Interface	Parallel
Series	-	Memory Format	FLASH
Package / Case	32-LCC (J-Lead)	Base Product Number	AT49F040
Package	Tube	Access Time	70 ns
Operating Temperature	0°C ~ 70°C (TC)		

Parts with Similar Specifications

The three parts on the right have similar specifications to Microchip Technology AT49F040-70JC

Product Attribute				
Part Number	AT49F040-70JC	AT49F040-90TC	AT49F040-12PC	AT49F040-70JI
Manufacturer	Microchip Technology	Microchip Technology	Microchip Technology	Microchip Technology
Memory Type	Non-Volatile	Non-Volatile	Non-Volatile	Non-Volatile
Memory Format	FLASH	FLASH	FLASH	FLASH
Write Cycle Time - Word, Page	50µs	50µs	50µs	50µs
Memory Size	4Mbit	4Mbit	4Mbit	4Mbit
Operating Temperature	0°C ~ 70°C (TC)	0°C ~ 70°C (TC)	0°C ~ 70°C (TC)	-40°C ~ 85°C (TC)
Voltage - Supply	4.5V ~ 5.5V	4.5V ~ 5.5V	4.5V ~ 5.5V	4.5V ~ 5.5V
Base Product Number	AT49F040	AT49F040	AT49F040	AT49F040
Package	Tube	Tray	Tube	Tube
Technology	FLASH	FLASH	FLASH	FLASH
Series	-	-	-	-
Memory Organization	512K x 8	512K x 8	512K x 8	512K x 8
Package / Case	32-LCC (J-Lead)	32-TFSOP (0.724", 18.40mm Width)	32-DIP (0.600", 15.24mm)	32-LCC (J-Lead)
Access Time	70 ns	90 ns	120 ns	70 ns
Memory Interface	Parallel	Parallel	Parallel	Parallel
Supplier Device Package	32-PLCC (13.97x11.43)	32-TSOP	32-PDIP	32-PLCC (13.97x11.43)
Mounting Type	Surface Mount	Surface Mount	Through Hole	Surface Mount

AT49F040-70JC Datasheet PDF

Download AT49F040-70JC pdf datasheets and Microchip Technology documentation for AT49F040-70JC - Microchip Technology.

Datasheets

[Cylindrical Battery Holders.pdf](#)

PCN Packaging

[MBB/Label Chgs 16/Nov/2018.pdf](#)

[Transfer to Microchip/Label/Pkg 5/Sep/2016.pdf](#)

Customers Also Interested in

Recommended Products



AT49F040-90TC Microchip Technology IC FLASH 4MBIT PARALLEL 32TSOP	AT49F040-12PC Microchip Technology IC FLASH 4MBIT PARALLEL 32DIP	AT49F040-70JI Microchip Technology IC FLASH 4MBIT PARALLEL 32PLCC	AT49F040A-55JI Microchip Technology IC FLASH 4MBIT PARALLEL 32PLCC	AT49F040-90TI Microchip Technology IC FLASH 4MBIT PARALLEL 32TSOP	AT49F040-12PI Microchip Technology IC FLASH 4MBIT PARALLEL 32DIP
					
AT49F040-90PC Microchip Technology IC FLASH 4MBIT PARALLEL 32DIP	AT49F040-70PC Microchip Technology IC FLASH 4MBIT PARALLEL 32DIP	AT49F040-12JC Microchip Technology IC FLASH 4MBIT PARALLEL 32PLCC	AT49F040-70PI Microchip Technology IC FLASH 4MBIT PARALLEL 32DIP	AT49F020-90JC Atmel (Microchip Technology)	AT49F040-55TI Atmel (Microchip Technology)
					
AT49F040-55JI Atmel (Microchip Technology)	AT49F040-90PI Microchip Technology IC FLASH 4MBIT PARALLEL 32DIP	AT49F040-12TC Microchip Technology IC FLASH 4MBIT PARALLEL 32TSOP	AT49F040A-70JI Microchip Technology IC FLASH 4MBIT PARALLEL 32PLCC	AT49F040-12TI Microchip Technology IC FLASH 4MBIT PARALLEL 32TSOP	AT49F040-90JC Microchip Technology IC FLASH 4MBIT PARALLEL 32PLCC

Shipment

Delivery Time

In-stock items can be shipped within 24 hours. Some parts will be arranged for delivery within 1-2 days from the date all items arrive at our warehouse. And Allelco ships order once a day at about 17:00, except Sunday. Once the goods are shipped, the estimated delivery time depends on the shipping methods and Delivery destination. The table below shows are the logistic time for some common countries.

Delivery Cost

> Use your express account for shipment if you have one.

> Use our account for the shipment. Refer to the table below for the approximate charges.

(Different time frame / countries / package size has different price.)

Delivery Method

> Global Common Shipment by DHL / UPS / FedEx / TNT / EMS / SF we support.

> Others more shipping ways, please get in touch with your customer manager.

Common Countries Logistic Time Reference		
Region	Country	Logistic Time(Day)
America	United States	5
	Brazil	7
Europe	Germany	5
	United Kingdom	4
	Italy	5
Oceania	Australia	6
	New Zealand	7
Asia	India	6
	Japan	7
Middle East	Israel	6

DHL & FedEx Shipment Charges Reference	
Shipment charges(KG)	Reference DHL(USD\$)
0.00kg-1.00kg	USD\$60.00
1.00kg-2.00kg	USD\$70.00
2.00kg-3.00kg	USD\$80.00

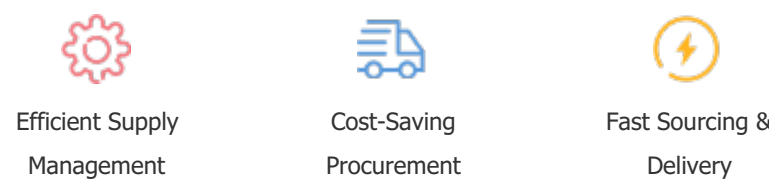
Note: The above table is for reference only. There may have some data bias for the uncontrollable factors.
Contact us if you have any questions.

Payment Support

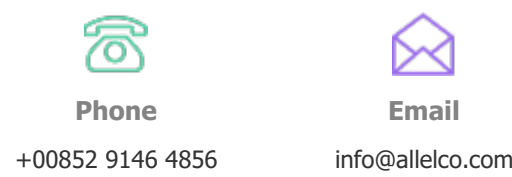
The payment method can be chosen from the methods shown below:
Wire Transfer (T/T, Bank Transfer), Western Union, Credit card, PayPal.



Your Faithful Supply Chain Partner -



Contact us if you have any questions.



Certifications & Memberships



[View More](#)