

Image may be representation.
See specifications for product details.



DS34T108GN+

Manufacturer Part Number	DS34T108GN+
Manufacturer	Maxim Integrated
Allelco Part Number	32D-DS34T108GN+
ECAD Model	Request Free CAD Models
Parts Description	IC TDM 484HSBGA
Package	484-BGA Exposed Pad
Data sheet	Cylindrical Battery Holders.pdf
RoHs Status	ROHS3 Compliant

Get a Quote

DS34T108GN+ - Analog Devices Inc./Maxim Integrated.New Original in Stock. Download Linear Technology DS34T108GN+ datasheet/specifications on AllelcoElec.com. Request a quote for DS34T108GN+, please send us email: info@allelco.com

Specifications

DS34T108GN+ Tech Specifications
DS34T108GN+ - Analog Devices Inc./Maxim Integrated technical specifications, attributes, parameters

Product Attribute	Attribute Value	Product Attribute	Attribute Value
Manufacturer	Maxim Integrated	Package	Tray
Type	TDM (Time Division Multiplexing)	Mounting Type	Surface Mount
Supplier Device Package	484-PBGA-HS (23x23)	Base Product Number	DS34T108
Series	-	Applications	Data Transport
Package / Case	484-BGA Exposed Pad		

Parts with Similar Specifications

The three parts on the right have similar specifications to Analog Devices Inc./Maxim Integrated DS34T108GN+

Product Attribute				
Part Number	DS34T108GN+	DS34T108	DS34T108GN	DS35-02A
Manufacturer	Analog Devices Inc./Maxim Integrated	DALLAS	Analog Devices Inc./Maxim Integrated	IXYS / Littelfuse
Package / Case	484-BGA Exposed Pad	-	484-BGA Exposed Pad	-
Mounting Type	Surface Mount	-	Surface Mount	-
Applications	Data Transport	-	Data Transport	-
Series	-	-	-	-
Package	Tray	-	Tray	-
Type	TDM (Time Division Multiplexing)	-	TDM (Time Division Multiplexing)	-
Base Product Number	DS34T108	-	DS34T108	-
Supplier Device Package	484-PBGA-HS (23x23)	-	484-PBGA-HS (23x23)	-

DS34T108GN+ Datasheet PDF

Download DS34T108GN+ pdf datasheets and Analog Devices Inc./Maxim Integrated documentation for DS34T108GN+ - Analog Devices Inc./Maxim Integrated.

Datasheets

[Cylindrical Battery Holders.pdf](#)

Environmental Information

[Maxim Integrated RoHS Cert.pdf](#)

[Material Declaration DS34T108GN+.pdf](#)

Application Notes

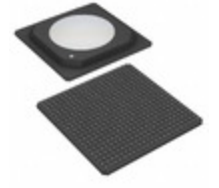
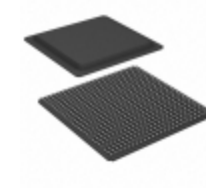
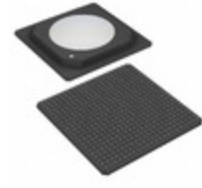
[How to Install NISTnet Software, Configure TDMoP P.pdf](#)

[FDL Network Loopback Support Using TDMoP Devices.pdf](#)

Customers Also Interested in

Recommended Products

DS34S132GNA2+ Analog Devices Inc./Maxim Integrated IC TELECOM INTERFACE 676TEPBGA	DS34T108 DALLAS	DS34T108GN Analog Devices Inc./Maxim Integrated IC TDM 484HSBGA	DS35-02A IXYS / Littelfuse IGBT Module	DS35-06A IXYS / Littelfuse IGBT Module	DS35-08A IXYS DIODE GEN PURP 800V 49A DO203AB
DS35-18A IXYS / Littelfuse IGBT Module	DS34S108GN+ Analog Devices Inc./Maxim Integrated IC TDM 484TEBGA	DS35-16A IXYS / Littelfuse IGBT Module	DS34T104GN+ Analog Devices Inc./Maxim Integrated IC TDM 484TEBGA	DS35-14A IXYS / Littelfuse IGBT Module	DS34T104GN Analog Devices Inc./Maxim Integrated IC TDM 484TEBGA



DS34T102

Analog Devices / Maxim Integrated

DS34WLD

DS34T102GN+

Analog Devices Inc./Maxim Integrated
IC TDM 484TEBGA

DS35-12A

IXYS
DIODE GEN PURP 1.2KV 49A
DO203AB

DS34S132GN+

Analog Devices Inc./Maxim Integrated
IC TDM OVER PACKET 676-BGA

DS34T101GN+

Analog Devices Inc./Maxim Integrated
IC TDM 484TEBGA

Shipment

Delivery Time

In-stock items can be shipped within 24 hours. Some parts will be arranged for delivery within 1-2 days from the date all items arrive at our warehouse. And Allelco ships order once a day at about 17:00, except Sunday. Once the goods are shipped, the estimated delivery time depends on the shipping methods and Delivery destination. The table below shows are the logistic time for some common countries.

Delivery Cost

- > Use your express account for shipment if you have one.
 - > Use our account for the shipment. Refer to the table below for the approximate charges.
- (Different time frame / countries / package size has different price.)

Delivery Method

- > Global Common Shipment by DHL / UPS / FedEx / TNT / EMS / SF we support.
- > Others more shipping ways, please get in touch with your customer manager.

Common Countries Logistic Time Reference

Region	Country	Logistic Time(Day)
America	United States	5
	Brazil	7
Europe	Germany	5
	United Kingdom	4
	Italy	5
Oceania	Australia	6
	New Zealand	7
Asia	India	6
	Japan	7
Middle East	Israel	6

DHL & FedEx Shipment Charges Reference

Shipment charges(KG)	Reference DHL(USD\$)
0.00kg-1.00kg	USD\$60.00
1.00kg-2.00kg	USD\$70.00
2.00kg-3.00kg	USD\$80.00

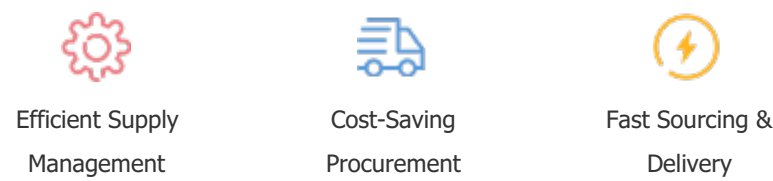
Note: The above table is for reference only. There may have some data bias for the uncontrollable factors.
Contact us if you have any questions.

Payment Support

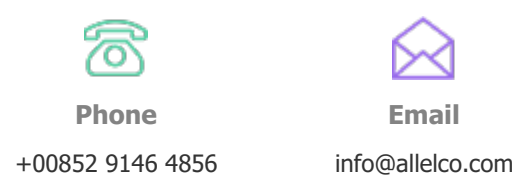
The payment method can be chosen from the methods shown below:
Wire Transfer (T/T, Bank Transfer), Western Union, Credit card, PayPal.



Your Faithful Supply Chain Partner -



Contact us if you have any questions.



Certifications & Memberships



[View More](#)



Contact us

Address: Flat/Rm C 13/F Harvard Commercial Building 105-111 Thomson Road, Wan Chai, Hong Kong
Phone: +00852 9146 4856
Fax: +00852 3010 8510
Email: info@Allelco.com