

Image may be representation.  
See specifications for product details.



## EP4CGX110DF27C7N

Manufacturer Part Number **EP4CGX110DF27C7N**

Manufacturer **Intel**

Allelco Part Number **32D-EP4CGX110DF27C7N**

ECAD Model [Request Free CAD Models](#)

Parts Description **IC FPGA 393 I/O 672FBGA**

Package **672-BGA**

Data sheet [Virtual JTAG Megafuntion Guide.pdf](#)

[Cyclone IV Device Datasheet.pdf](#)

[Cyclone IV Device Handbook.pdf](#)

RoHs Status **RoHS Compliant**

[Get a Quote](#)

EP4CGX110DF27C7N - Intel.New Original in Stock. Download Linear Technology EP4CGX110DF27C7N datasheet/specifications on AllelcoElec.com.  
Request a quote for EP4CGX110DF27C7N, please send us email: [info@allelco.com](mailto:info@allelco.com)

### Specifications

EP4CGX110DF27C7N Tech Specifications

EP4CGX110DF27C7N - Intel technical specifications, attributes, parameters

| Product Attribute       | Attribute Value  | Product Attribute              | Attribute Value |
|-------------------------|------------------|--------------------------------|-----------------|
| Manufacturer            | Intel            | Operating Temperature          | 0°C ~ 85°C (TJ) |
| Voltage - Supply        | 1.16V ~ 1.24V    | Number of Logic Elements/Cells | 109424          |
| Total RAM Bits          | 5621760          | Number of LABs/CLBs            | 6839            |
| Supplier Device Package | 672-FBGA (27x27) | Number of I/O                  | 393             |
| Series                  | Cyclone® IV GX   | Mounting Type                  | Surface Mount   |
| Package / Case          | 672-BGA          | Base Product Number            | EP4CGX110       |
| Package                 | Tray             |                                |                 |

### Parts with Similar Specifications

The three parts on the right have similar specifications to Intel EP4CGX110DF27C7N

| Product Attribute              |                  |                  |                    |                  |
|--------------------------------|------------------|------------------|--------------------|------------------|
| Part Number                    | EP4CGX110DF27C7N | EP4CE75F23C6N    | EP4CGX110DF27I7N   | EP4CGX110DF31C8N |
| Manufacturer                   | Intel            | Intel            | Intel              | Intel            |
| Number of Logic Elements/Cells | 109424           | 75408            | 109424             | 109424           |
| Supplier Device Package        | 672-FBGA (27x27) | 484-FBGA (23x23) | 672-FBGA (27x27)   | 896-FBGA (31x31) |
| Number of I/O                  | 393              | 292              | 393                | 475              |
| Package / Case                 | 672-BGA          | 484-BGA          | 672-BGA            | 896-BGA          |
| Number of LABs/CLBs            | 6839             | 4713             | 6839               | 6839             |
| Series                         | Cyclone® IV GX   | Cyclone® IV E    | Cyclone® IV GX     | Cyclone® IV GX   |
| Voltage - Supply               | 1.16V ~ 1.24V    | 1.15V ~ 1.25V    | 1.16V ~ 1.24V      | 1.16V ~ 1.24V    |
| Package                        | Tray             | Tray             | Tray               | Tray             |
| Base Product Number            | EP4CGX110        | EP4CE75          | EP4CGX110          | EP4CGX110        |
| Operating Temperature          | 0°C ~ 85°C (TJ)  | 0°C ~ 85°C (TJ)  | -40°C ~ 100°C (TJ) | 0°C ~ 85°C (TJ)  |
| Mounting Type                  | Surface Mount    | Surface Mount    | Surface Mount      | Surface Mount    |
| Total RAM Bits                 | 5621760          | 2810880          | 5621760            | 5621760          |

### EP4CGX110DF27C7N Datasheet PDF

Download EP4CGX110DF27C7N pdf datasheets and Intel documentation for EP4CGX110DF27C7N - Intel.

#### Datasheets

- [Virtual JTAG Megafuntion Guide.pdf](#)
- [Cyclone IV Device Datasheet.pdf](#)
- [Cyclone IV Device Handbook.pdf](#)

#### PCN Packaging

- [Mult Dev Label CHG 24/Jan/2020.pdf](#)
- [Mult Dev Label Chgs 24/Feb/2020.pdf](#)

#### PCN Design/Specification

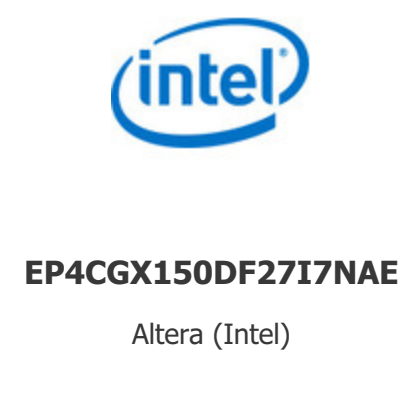
- [Quartus SW/Web Chgs 23/Sep/2021.pdf](#)
- [Mult Dev Software Chgs 3/Jun/2021.pdf](#)

#### Errata

- [Cyclone IV Device Family Errata.pdf](#)

### Customers Also Interested in

#### Recommended Products



## Shipment

### Delivery Time

In-stock items can be shipped within 24 hours. Some parts will be arranged for delivery within 1-2 days from the date all items arrive at our warehouse. And Allelco ships order once a day at about 17:00, except Sunday. Once the goods are shipped, the estimated delivery time depends on the shipping methods and Delivery destination. The table below shows are the logistic time for some common countries.

### Delivery Cost

> Use your express account for shipment if you have one.

> Use our account for the shipment. Refer to the table below for the approximate charges.

(Different time frame / countries / package size has different price.)

### Delivery Method

> Global Common Shipment by DHL / UPS / FedEx / TNT / EMS / SF we support.

> Others more shipping ways, please get in touch with your customer manager.

| Common Countries Logistic Time Reference |                |                    |
|--|----------------|--------------------|
| Region                                   | Country        | Logistic Time(Day) |
| America                                  | United States  | 5                  |
|  | Brazil         | 7                  |
| Europe                                   | Germany        | 5                  |
|  | United Kingdom | 4                  |
|  | Italy          | 5                  |
| Oceania                                  | Australia      | 6                  |
|  | New Zealand    | 7                  |
| Asia                                     | India          | 6                  |
|  | Japan          | 7                  |
| Middle East                              | Israel         | 6                  |

| DHL & FedEx Shipment Charges Reference |                      |
|--|----------------------|
| Shipment charges(KG)                   | Reference DHL(USD\$) |
| 0.00kg-1.00kg                          | USD\$60.00           |
| 1.00kg-2.00kg                          | USD\$70.00           |
| 2.00kg-3.00kg                          | USD\$80.00           |

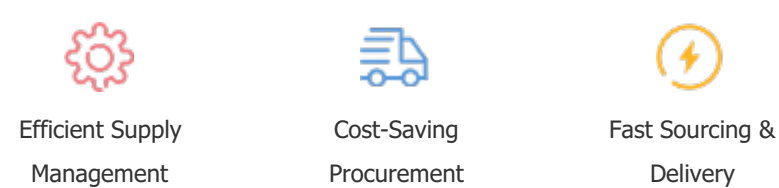
Note: The above table is for reference only. There may have some data bias for the uncontrollable factors.  
Contact us if you have any questions.

## Payment Support

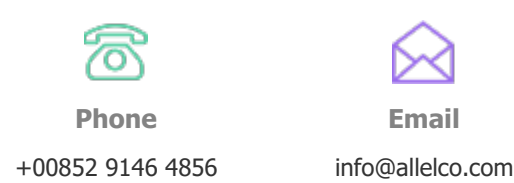
The payment method can be chosen from the methods shown below:  
Wire Transfer (T/T, Bank Transfer), Western Union, Credit card, PayPal.



## Your Faithful Supply Chain Partner -



Contact us if you have any questions.



## Certifications & Memberships



[View More](#)