

Image may be representation.  
See specifications for product details.



## EP3C55F484I7N

Manufacturer Part Number	<b>EP3C55F484I7N</b>
Manufacturer	<b>Intel</b>
Allelco Part Number	32D-EP3C55F484I7N
ECAD Model	Request Free CAD Models
Parts Description	IC FPGA 327 I/O 484FBGA
Package	484-BGA
Data sheet	<a href="#">Virtual JTAG Megafuntion Guide.pdf</a> <a href="#">Cyclone III Brochure.pdf</a> <a href="#">Cyclone III Family Overview.pdf</a> <a href="#">Cyclone III Device Handbook Vol1.pdf</a>
RoHs Status	RoHS Compliant

**Get a Quote**

EP3C55F484I7N - Intel.New Original in Stock. Download Linear Technology EP3C55F484I7N datasheet/specifications on AllelcoElec.com.  
Request a quote for EP3C55F484I7N, please send us email: [info@allelco.com](mailto:info@allelco.com)

### Specifications

EP3C55F484I7N Tech Specifications  
EP3C55F484I7N - Intel technical specifications, attributes, parameters

Product Attribute	Attribute Value	Product Attribute	Attribute Value
Manufacturer	Intel	Operating Temperature	-40°C ~ 100°C (TJ)
Voltage - Supply	1.15V ~ 1.25V	Number of Logic Elements/Cells	55856
Total RAM Bits	2396160	Number of LABs/CLBs	3491
Supplier Device Package	484-FBGA (23x23)	Number of I/O	327
Series	Cyclone® III	Mounting Type	Surface Mount
Package / Case	484-BGA	Base Product Number	EP3C55
Package	Tray		

### Parts with Similar Specifications

The three parts on the right have similar specifications to Intel EP3C55F484I7N

Product Attribute				
Part Number	EP3C55F484I7N	EP3C55F780C6N	EP3C55F484C6	EP3C40U484I7
Manufacturer	Intel	Intel	Intel	Intel
Series	Cyclone® III	Cyclone® III	Cyclone® III	Cyclone® III
Total RAM Bits	2396160	2396160	2396160	1161216
Number of LABs/CLBs	3491	3491	3491	2475
Package / Case	484-BGA	780-BGA	484-BGA	484-FBGA
Supplier Device Package	484-FBGA (23x23)	780-FBGA (29x29)	484-FBGA (23x23)	484-UBGA (19x19)
Voltage - Supply	1.15V ~ 1.25V	1.15V ~ 1.25V	1.15V ~ 1.25V	1.15V ~ 1.25V
Mounting Type	Surface Mount	Surface Mount	Surface Mount	Surface Mount
Package	Tray	Tray	Tray	Tray
Base Product Number	EP3C55	EP3C55	EP3C55	EP3C40
Number of I/O	327	377	327	331
Operating Temperature	-40°C ~ 100°C (TJ)	0°C ~ 85°C (TJ)	0°C ~ 85°C (TJ)	-40°C ~ 100°C (TJ)
Number of Logic Elements/Cells	55856	55856	55856	39600

### EP3C55F484I7N Datasheet PDF

Download EP3C55F484I7N pdf datasheets and Intel documentation for EP3C55F484I7N - Intel.

#### Datasheets

Virtual JTAG Megafuntion Guide.pdf

Cyclone III Brochure.pdf

Cyclone III Family Overview.pdf

#### PCN Design/Specification

Mult Series Software Chgs 26/Mar/2020.pdf

Substrate/Wire 10/Jun/2010.pdf

#### PCN Packaging

Mult Dev Label CHG 24/Jan/2020.pdf

Mult Dev Label Chgs 24/Feb/2020.pdf

#### HTML Datasheet


Cyclone III Device Handbook Vol1.pdf

### Customers Also Interested in

#### Recommended Products



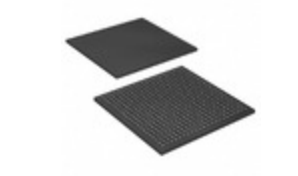
**EP3C55F780C6N**  
Intel  
IC FPGA 377 I/O 780FBGA



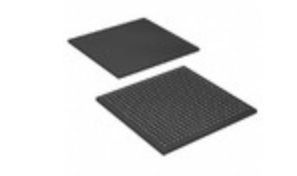
**EP3C55F708I7N**  
Altera (Intel)  
IC FPGA 94 I/O 144EQFP



**EP3C55F484C6**  
Intel  
IC FPGA 327 I/O 484FBGA



**EP3C40U484I7**  
Intel  
IC FPGA 331 I/O 484UBGA



**EP3C55U484I7N**  
Intel  
IC FPGA 327 I/O 484UBGA



**EP3C55F484C6N**  
Intel  
IC FPGA 327 I/O 484FBGA



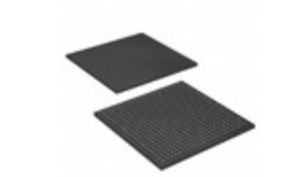
**EP3C40U484I7N**  
Intel  
IC FPGA 331 I/O 484UBGA



**EP3C5E144A7N**  
Intel  
IC FPGA 94 I/O 144EQFP



**EP3C5E144C7N**  
Intel  
IC FPGA 94 I/O 144EQFP



**EP3C55U484C6N**  
Intel  
IC FPGA 327 I/O 484UBGA



**EP3C55F484C7N**  
Intel  
IC FPGA 327 I/O 484FBGA



**EP3C55F780I7N**  
Intel  
IC FPGA 377 I/O 780FBGA



**EP3C55F484I7**  
Intel  
IC FPGA 327 I/O 484FBGA



**EP3C55F484C8N**  
Intel  
IC FPGA 327 I/O 484FBGA



**EP3C40Q240C8N**  
Intel  
IC FPGA 128 I/O 240QFP



**EP3C55F780C8N**  
Intel  
IC FPGA 377 I/O 780FBGA



**EP3C40Q240C8**  
Intel  
IC FPGA 128 I/O 240QFP



**EP3C55F780C7N**  
Intel  
IC FPGA 377 I/O 780FBGA

## Shipment

### Delivery Time

In-stock items can be shipped within 24 hours. Some parts will be arranged for delivery within 1-2 days from the date all items arrive at our warehouse. And Allelco ships order once a day at about 17:00, except Sunday. Once the goods are shipped, the estimated delivery time depends on the shipping methods and Delivery destination. The table below shows are the logistic time for some common countries.

### Delivery Cost

> Use your express account for shipment if you have one.

> Use our account for the shipment. Refer to the table below for the approximate charges.

(Different time frame / countries / package size has different price.)

### Delivery Method

> Global Common Shipment by DHL / UPS / FedEx / TNT / EMS / SF we support.

> Others more shipping ways, please get in touch with your customer manager.

Common Countries Logistic Time Reference		
Region	Country	Logistic Time(Day)
America	United States	5
	Brazil	7
Europe	Germany	5
	United Kingdom	4
	Italy	5
Oceania	Australia	6
	New Zealand	7
Asia	India	6
	Japan	7
Middle East	Israel	6

DHL & FedEx Shipment Charges Reference	
Shipment charges(KG)	Reference DHL(USD\$)
0.00kg-1.00kg	USD\$60.00
1.00kg-2.00kg	USD\$70.00
2.00kg-3.00kg	USD\$80.00

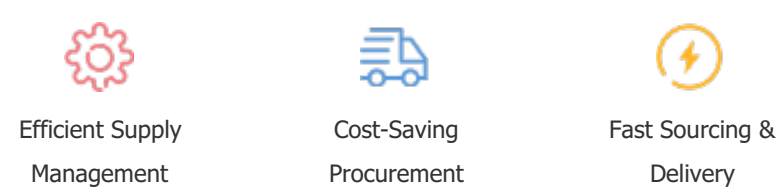
Note: The above table is for reference only. There may have some data bias for the uncontrollable factors.  
Contact us if you have any questions.

## Payment Support

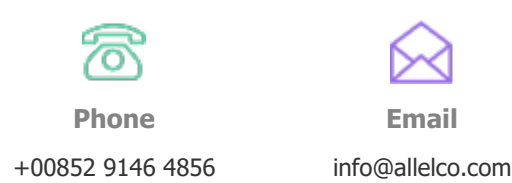
The payment method can be chosen from the methods shown below:  
Wire Transfer (T/T, Bank Transfer), Western Union, Credit card, PayPal.



## Your Faithful Supply Chain Partner -



Contact us if you have any questions.



## Certifications & Memberships



View More