



Image may be representation.
See specifications for product details.



1N4448W-E3-08

Manufacturer Part Number	1N4448W-E3-08
Manufacturer	Vishay General Semiconductor – Diodes Division
Allelco Part Number	32D-1N4448W-E3-08
ECAD Model	PCB Symbol, Footprint & 3D Mode
Parts Description	DIODE GEN PURP 75V 150MA SOD123
Package	SOD-123
Data sheet	1N4448W.pdf
RoHs Status	ROHS3 Compliant

Get a Quote

1N4448W-E3-08 - Vishay General Semiconductor - Diodes Division. New Original in Stock. Download Linear Technology 1N4448W-E3-08 datasheet/specifications on AllelcoElec.com.
Request a quote for 1N4448W-E3-08, please send us email: info@allelco.com

Specifications

1N4448W-E3-08 Tech Specifications
1N4448W-E3-08 - Vishay General Semiconductor - Diodes Division technical specifications, attributes, parameters

Product Attribute	Attribute Value	Product Attribute	Attribute Value
Manufacturer	Vishay General Semiconductor – Diodes Division	Package / Case	SOD-123
Voltage - Forward (Vf) (Max) @ If	720 mV @ 5 mA	Package	Tape & Reel (TR)
Voltage - DC Reverse (Vr) (Max)	75 V	Operating Temperature - Junction	-55°C ~ 150°C
Technology	Standard	Mounting Type	Surface Mount
Supplier Device Package	SOD-123	Current - Reverse Leakage @ Vr	5 µA @ 75 V
Speed	Small Signal =< 200mA (Io), Any Speed	Current - Average Rectified (Io)	150mA
Series	-	Capacitance @ Vr, F	-
Reverse Recovery Time (trr)	4 ns	Base Product Number	1N4448

Parts with Similar Specifications

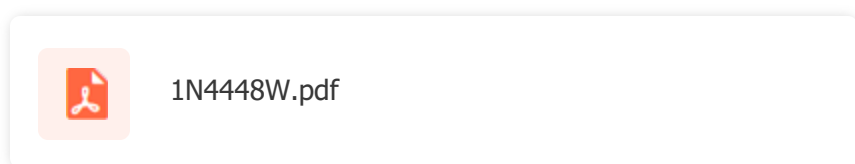
The three parts on the right have similar specifications to Vishay General Semiconductor - Diodes Division 1N4448W-E3-08

Product Attribute				
Part Number	1N4448W-E3-08	1N4448WQ-7-F	1N4448WS	1N4448WS
Manufacturer	Vishay General Semiconductor - Diodes Division	Diodes Incorporated	SMC Diode Solutions	Diotec Semiconductor
Current - Reverse Leakage @ Vr	5 µA @ 75 V	25 nA @ 20 V	2.5 µA @ 75 V	100 nA @ 75 V
Capacitance @ Vr, F	-	4pF @ 0V, 1MHz	4pF @ 0V, 1MHz	2pF @ 0V, 1MHz
Voltage - Forward (Vf) (Max) @ If	720 mV @ 5 mA	1.25 V @ 150 mA	1 V @ 100 mA	1.25 V @ 150 mA
Current - Average Rectified (Io)	150mA	250mA	250mA	150mA
Supplier Device Package	SOD-123	SOD-123	SOD-323	SOD-323
Mounting Type	Surface Mount	Surface Mount	Surface Mount	Surface Mount
Base Product Number	1N4448	1N4448	1N4448	1N4448
Operating Temperature - Junction	-55°C ~ 150°C	-65°C ~ 150°C	-65°C ~ 150°C	-55°C ~ 150°C
Package	Tape & Reel (TR)	Tape & Reel (TR)	Tape & Reel (TR)	Tape & Reel (TR)
Series	-	Automotive, AEC-Q101	-	-
Reverse Recovery Time (trr)	4 ns	4 ns	4 ns	4 ns
Voltage - DC Reverse (Vr) (Max)	75 V	75 V	75 V	75 V
Package / Case	SOD-123	SOD-123	SC-90, SOD-323F	SC-90, SOD-323F
Technology	Standard	Standard	Standard	Standard
Speed	Small Signal =< 200mA (Io), Any Speed	Fast Recovery =< 500ns, > 200mA (Io)	Fast Recovery =< 500ns, > 200mA (Io)	Small Signal =< 200mA (Io), Any Speed

1N4448W-E3-08 Datasheet PDF

Download 1N4448W-E3-08 pdf datasheets and Vishay General Semiconductor - Diodes Division documentation for 1N4448W-E3-08 - Vishay General Semiconductor - Diodes Division.

Datasheets



Customers Also Interested in

Recommended Products



1N4448WQ-7-F
Diodes Incorporated
DIODE GEN PURP 75V 250MA
SOD123



1N4448WS
SMC Diode Solutions
DIODE GEN PURP 75V 250MA
SOD323



1N4448W D2



1N4448W T/R
PANJIT



1N4448WS
Diotec Semiconductor
DIODE SOD-323 100V 0.15A 4NS



1N4448WS
Yangzhou Yangjie Electronic
Technology Co.,Ltd
DIODE GEN PURP 75V 250MA
SOD323



1N4448W

SMC Diode Solutions
DIODE GEN PURP 75V 250MA
SOD123

1N4448W-7-F

Diodes Incorporated
DIODE GEN PURP 75V 250MA
SOD123

1N4448W-TP

Micro Commercial Co
DIODE GEN PURP 75V 250MA
SOD123

1N4448WS

onsemi
DIODE GEN PURP 75V 150MA
SOD323F

1N4448W

Diotec Semiconductor
DIODE SOD-123 100V 0.15A 4NS

1N4448W RH

Taiwan Semiconductor



1N4448W

Taiwan Semiconductor Corporation
SOD-123F, 75V, 0.15A, SWITCHING

1N4448W-7

Diodes Incorporated
DIODE GEN PURP 75V 250MA
SOD123

1N4448WS

Taiwan Semiconductor Corporation
SOD-323F, 100V, 0.15A, SWITCHING

1N4448WS

Fairchild Semiconductor
SMALL SIGNAL DIODE

1N4448W

Yangzhou Yangjie Electronic Technology Co.,Ltd
DIODE GEN PURP 100V 250MA
SOD123

1N4448W T5

CJ

Shipment

Delivery Time

In-stock items can be shipped within 24 hours. Some parts will be arranged for delivery within 1-2 days from the date all items arrive at our warehouse. And Allelco ships order once a day at about 17:00, except Sunday. Once the goods are shipped, the estimated delivery time depends on the shipping methods and Delivery destination. The table below shows are the logistic time for some common countries.

Delivery Cost

> Use your express account for shipment if you have one.

> Use our account for the shipment. Refer to the table below for the approximate charges.

(Different time frame / countries / package size has different price.)

Delivery Method

> Global Common Shipment by DHL / UPS / FedEx / TNT / EMS / SF we support.

> Others more shipping ways, please get in touch with your customer manager.

Common Countries Logistic Time Reference

Region	Country	Logistic Time(Day)
America	United States	5
	Brazil	7
Europe	Germany	5
	United Kingdom	4
	Italy	5
Oceania	Australia	6
	New Zealand	7
Asia	India	6
	Japan	7
Middle East	Israel	6

DHL & FedEx Shipment Charges Reference

Shipment charges(KG)	Reference DHL(USD\$)
0.00kg-1.00kg	USD\$60.00
1.00kg-2.00kg	USD\$70.00
2.00kg-3.00kg	USD\$80.00

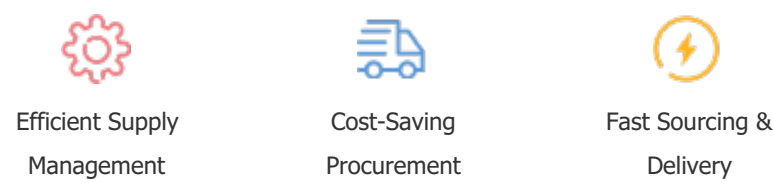
Note: The above table is for reference only. There may have some data bias for the uncontrollable factors.
Contact us if you have any questions.

Payment Support

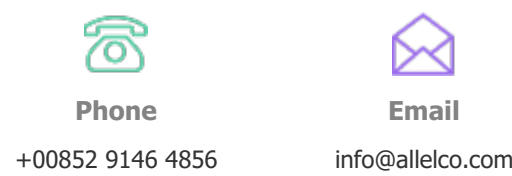
The payment method can be chosen from the methods shown below:
Wire Transfer (T/T, Bank Transfer), Western Union, Credit card, PayPal.



Your Faithful Supply Chain Partner -



Contact us if you have any questions.



Certifications & Memberships



View More



Contact us

Address: Flat/Rm C 13/F Harvard Commercial Building 105-111 Thomson Road, Wan Chai, Hong Kong

Phone: +00852 9146 4856

Fax: +00852 3010 8510

Email: info@allelco.com

Copyright © 2012-2023 AllelcoElec.com. All rights reserved.